

Installing TimeMap

User Guide

TimeMap®, Version 5.1

- **System Requirements**
- **Installing TimeMap**
- **Converting Timelines**
- **Updating TimeMap Versions**



TimeMap Installation Guide

No part of this work may be reproduced or transmitted in any form or by any means, electronic or mechanical, including photocopying, recording, or by any information storage or retrieval system, without permission.

While the information contained herein is believed to be accurate, this work is provided "as is," without warranty of any kind. The information contained in this work does not constitute, and is not intended as, legal advice.

LexisNexis and the Knowledge Burst logo are registered trademarks of Reed Elsevier Inc., used under license. TimeMap is a registered trademark of LexisNexis, a division of Reed Elsevier Inc. Other products or services may be trademarks or registered trademarks of their respective companies.

© 2016 LexisNexis. All rights reserved.

CaseMap®
CaseMap® Server
TextMap®
TimeMap®
NoteMap®
DepPrep®
Sanction®
Concordance®

Version: TimeMap® 5.1
Release Date: May 2, 2014

Table of Contents

Chapter 1 Installing TimeMap	5
1 System requirements.....	5
2 Installing TimeMap.....	5
3 Converting timelines.....	13
4 Updating TimeMap versions.....	14
Index	16

Installing TimeMap

User Guide

Installing TimeMap

Chapter

1

Installing TimeMap

System requirements

Review the current system requirements for setup considerations and suggestions. Please keep informed of TimeMap release updates and how they impact your system by visiting www.lexisnexis.com/casemap/timemap.

TimeMap v5.1

TimeMap must be installed and run on a local hard drive. TimeMap cannot be run from a network server. TimeMap data can be stored in a file on a network drive. You must be logged on with admin rights to install TimeMap.

- Minimum of Pentium 166 or equivalent
- Minimum of 64 MB of RAM, 129 recommended
- Minimum of 15 MB of free disk space
- Any of the following versions of Microsoft Windows®:
 - Microsoft Windows 2008
 - Microsoft Windows Vista®
 - Microsoft Windows® 7
 - Microsoft Windows® 8
 - Microsoft Windows® 10
- Microsoft Internet Explorer® v6.0+ is required for Send to TimeMap functionality

Related Topics

[Installing TimeMap](#)

[Converting timelines](#)

[Updating TimeMap versions](#)

Installing TimeMap

The TimeMap client application is installed to the Microsoft® Windows® desktop of any TimeMap user.

TimeMap installs as an unregistered trial copy. There is a 30-day grace period to use TimeMap. Once the grace period expires, TimeMap will no longer function. The unregistered copy of TimeMap works identically to the registered version. If you are reinstalling over a registered version of TimeMap, you will not need to re-register.

TimeMap client installation overview:

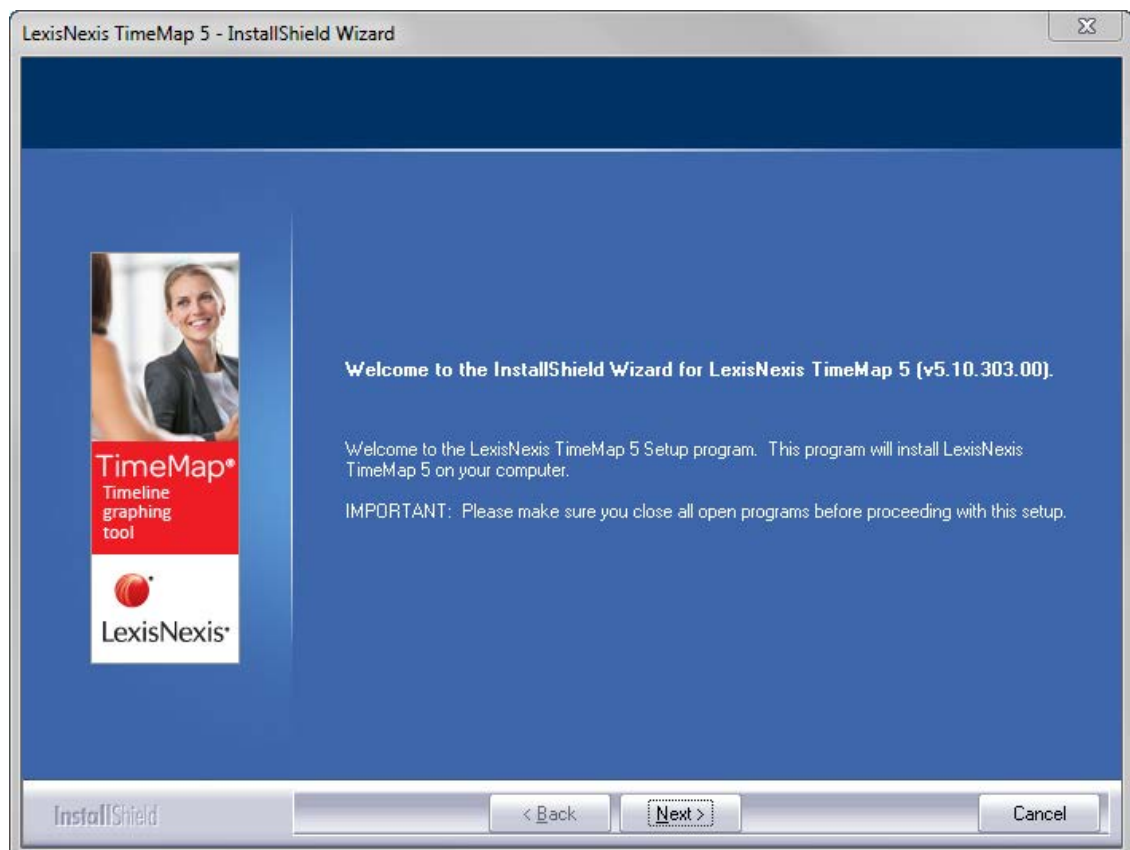
- TimeMap must be installed and run on a local hard drive
- TimeMap cannot be run from a network server
- CaseMap data files can be stored in a file on a network drive
- Previous version cases must be converted to open in the current TimeMap version

⚠ Cases need to be converted to the current version format. Once a timeline is converted, users with previous TimeMap versions cannot open it. We recommend you upgrade all TimeMap users working on the same timeline at the same time. For details, see [Converting timelines](#).

✔ You can install the latest TimeMap version to a desktop that already has previous versions of TimeMap installed. It will not remove the prior version.

To install TimeMap

1. Double-click on the **TimeMap.exe** icon to launch the TimeMap Install utility.
2. When the **InstallShield Wizard** launches, click **Next**.

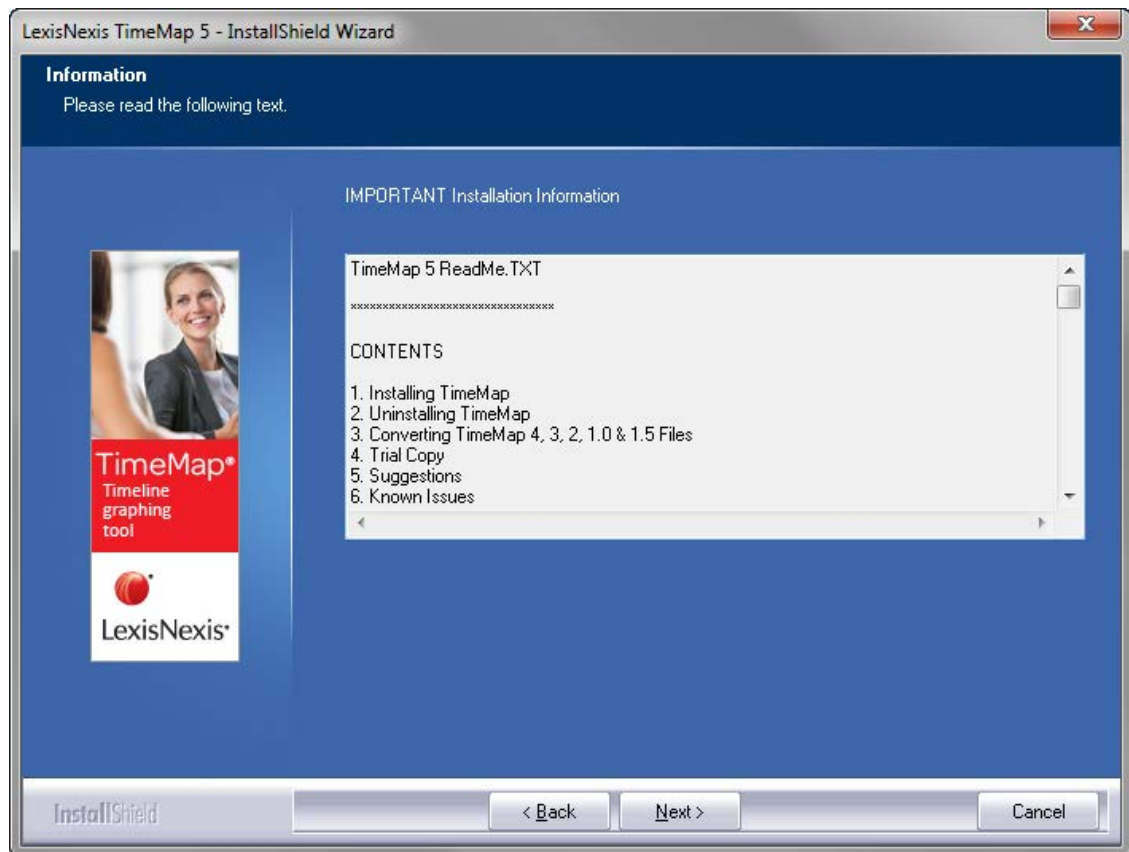


3. In the **License Agreement** dialog box, click **Yes**.



Click Print if you want to print a copy of the license agreement.

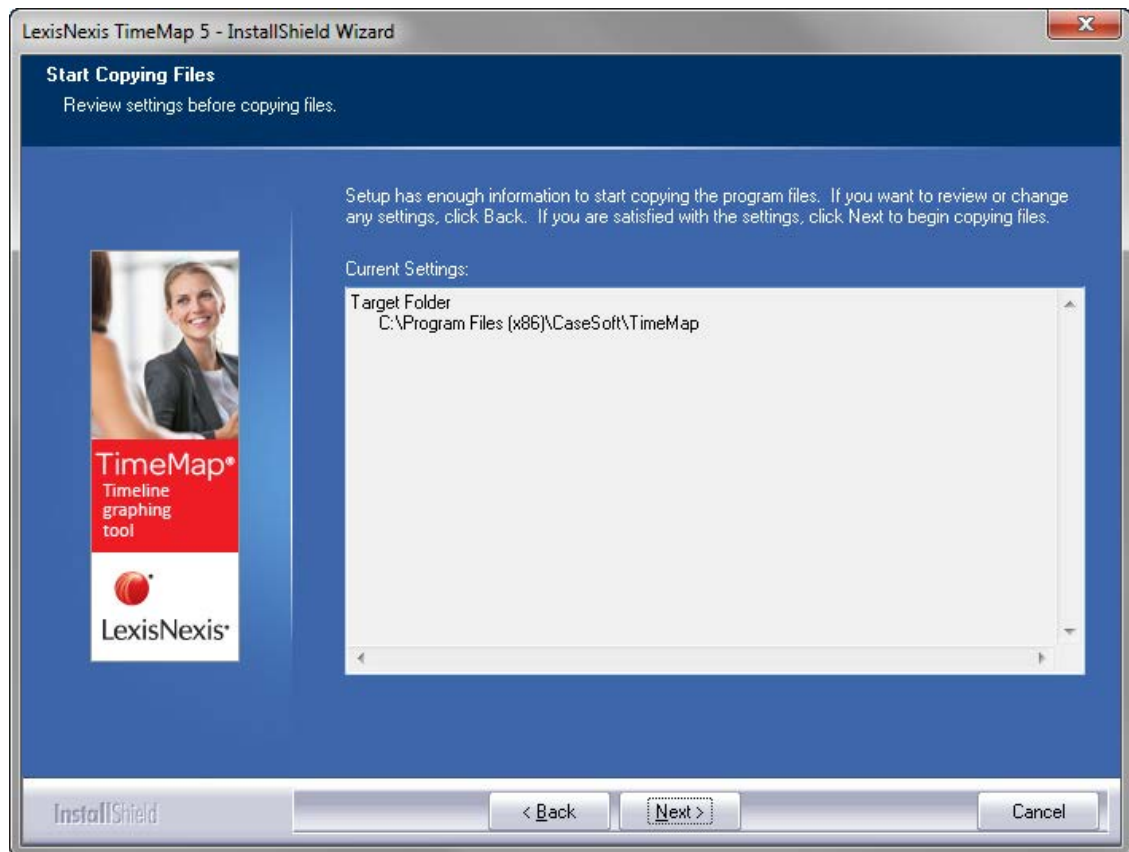
4. In the **Information** dialog box, review the installation information, then click **Next**.



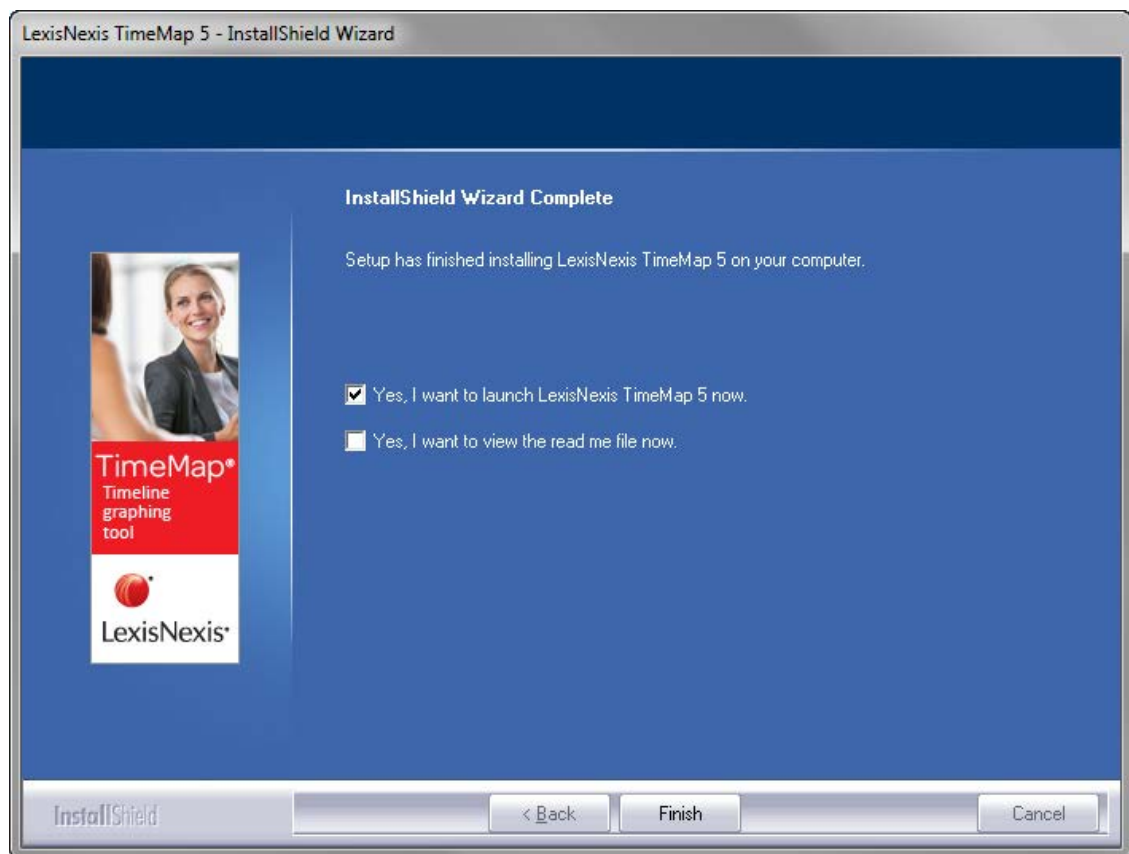
5. In the **Choose Destination Location** dialog box, verify whether the default destination folder is the appropriate location, then click **Next**.

The default folder is C:\Program Files\CaseSoft\TimeMap.

6. In the **Start Copying Files** dialog box, review the current settings, then click **Next**.




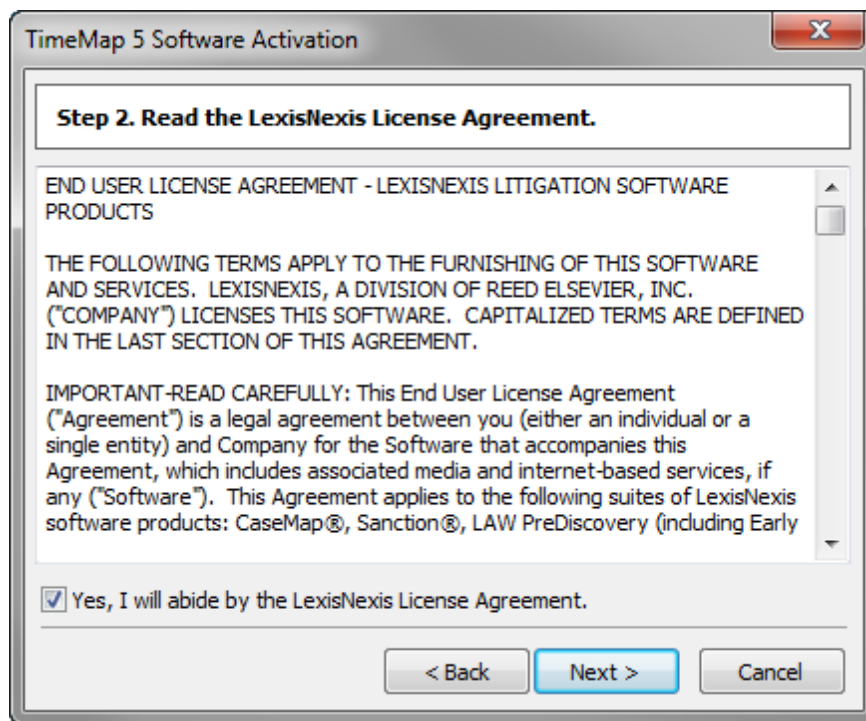
8. In the **InstallShield Wizard Complete** dialog box, select the **Yes, I want to launch LexisNexis TimeMap 10 now** check box.



9. Select the **Yes, I want to view the read me file now** check box, if you want to do so at this time.
10. Click **Finish**.
11. In the **Welcome to TimeMap** dialog box, select **Activate TimeMap**.



11. Click **Continue**.
 12. In the **TimeMap Software Activation** dialog box, click **Next** to open the **Enter your registration information** dialog box.
 13. In the **Registration Name** field, type in your user name for license registration.
 14. In the **Registration ID** field, type in your registration ID.
 15. In the **Product ID** field, type in the TimeMap license number.
-  You must be registered with LexisNexis as a valid user of this software to have this registration information. When you register with LexisNexis, you should receive this information via email or phone.
16. Click **Next** to continue.
 17. In the **Read the LexisNexis License Agreement** dialog box, read the license agreement and then select the **Yes, I will abide by the LexisNexis License Agreement** check box.



18. Click **Next** to continue.

19. In the **How do you want to activate this product** dialog box, select the activation option you want to use.



- Activate software online — Use this option to activate online with an active internet

connection.

- Activate by web browser or phone — Use this option if you received an activation key via email.

20. Click **Next** to continue.

21. In the **Summary of online activation transmission information** dialog box, review the license registration information.

22. Click **Finish**.

23. In the message confirming TimeMap activation, click **OK**.

Installation is complete. TimeMap now automatically launches and you can begin using it.

Related Topics

[System requirements](#)

[Converting timelines](#)

[Updating TimeMap versions](#)


Converting timelines


TimeMap continues to allow you to convert previous version cases to the new current release version. For example, you can upgrade a TimeMap v4.0 case to a TimeMap v5.0 case and have it still write to a Microsoft® Access database.

When upgrading a previous version timeline to a new version, TimeMap recognizes the older timeline format, such as a TimeMap v4.0 file (.tmv4 extension) and offers to convert it to the new version format for you. It only takes a minute or so to convert previous timelines to the new TimeMap format.

During the conversion process, TimeMap does not change anything in your existing timeline. It creates a brand new timeline and copies all information from the old timeline into the new one. Additionally, TimeMap changes the file extension of the older version, such as .tmv4 to .001. This change keeps you from inadvertently reopening the old timeline and using a previous TimeMap license.

If a timeline already exists with the same name and extension, the numbers will increment to ".002" and ".003" to ensure a unique name. We recommend that you inform staff when the import is complete and that the original timeline is now renamed.

 Previous versions of TimeMap are not used during the conversion process, so you can uninstall them at any time.

 Once a timeline has been converted to a new version format, you can no longer access it using an older TimeMap version. We recommend that all users get new versions installed at the same time.

 **To convert timelines to a new TimeMap version**

1. On the **File** menu, click **Open**.
2. In the **Open** dialog box, locate (select) the previous version timeline you want to convert, then click **Open**.
3. In the message, review the selected timeline information, then click **OK**.
4. In the **Select the name and location of the converted case file** dialog box, locate the directory where you want to save the case, then click **Save**.
5. In the message confirming timeline conversion, click **OK**.

The message displays the directory location of the original timeline and its new file extension.

The Case Logon dialog box now displays and you can open the timeline in the current version of TimeMap.

 **Related Topics**

[Installing TimeMap](#)

[Updating TimeMap versions](#)

Updating TimeMap versions

When you receive notification that a current version of TimeMap has an update available, you can quickly download it to ensure you have the latest tools and fixes needed for using TimeMap successfully.

IT staff and litigation support professionals should alert users when they are eligible to receive a new version of TimeMap for their licenses. The latest version can be downloaded at www.lexisnexis.com/casemap/timemap by following the instructions for installing TimeMap.

Once you have updated CaseMap, review the What's New topic for release information detailing feature enhancements for the version you are now using.

 **To update TimeMap**

1. Verify that the computer you are using has an active Internet connection for the update.
2. Open **TimeMap** on the desktop for the license holder needing the update.
3. On the **Help** menu, click **Web Update**.

4. In the **TimeMap WebUpdate** dialog box, click **Continue**.

A status screen displays the installation process for the update and then displays a message with the version installed when it completes.

If you currently have all updates installed, you receive a message indicating that you have the current version.

Related Topics

[System requirements](#)

[Installing TimeMap](#)

[Converting timelines](#)

Index

- C -

converting
 timelines 13

- I -

installing
 system requirements 5
 TimeMap 5

- S -

system requirements 5

- T -

timelines
 converting 13
TimeMap
 installing 5
 system requirements 5
 updating 14

- U -

updating
 TimeMap 14