

CaseMap

What's New - Litigation Webinar

Elaine Igama | February 24, 2016

Agenda

Product: CaseMap version 12.1
Release Date: February 29, 2016

- New Features
- Enhancements
- Live Demonstration
- Training/Resources
- Q & A



New Features and Enhancements

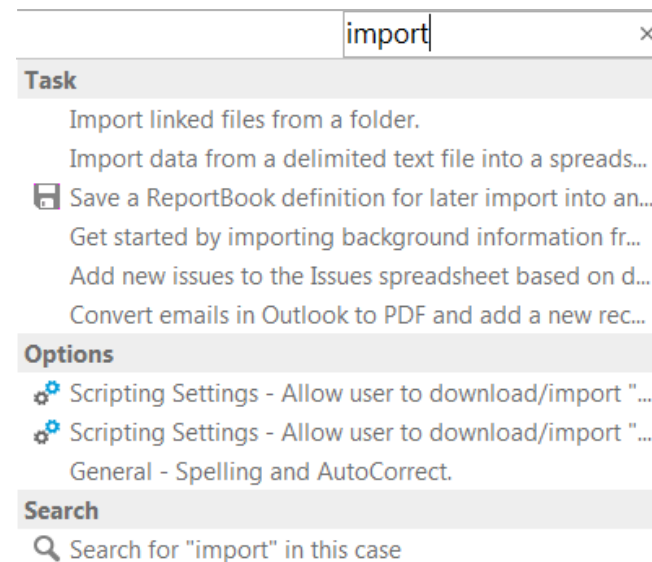
- SmartAssist
- Find and Redact
- Expanded Outlook plug-in
- Enhanced Document Production
- Import Linked File Wizard

SmartAssist

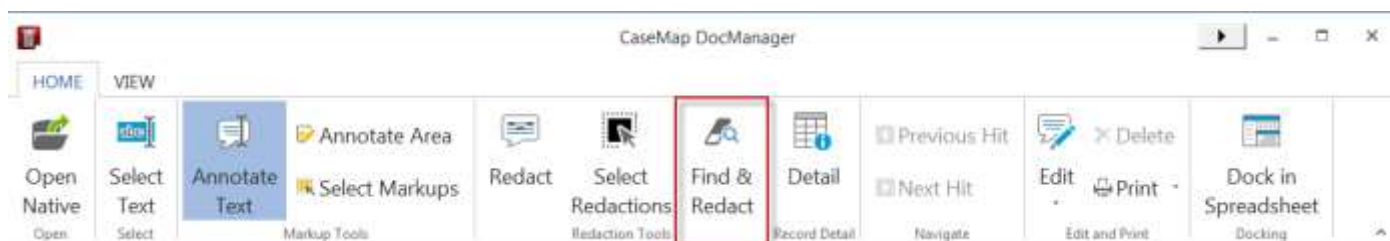


SmartAssist can search CaseMap to:

- Help new users navigate
- Perform various tasks
- Generate reports
- Provide links for additional information



DocManager – Find and Redact



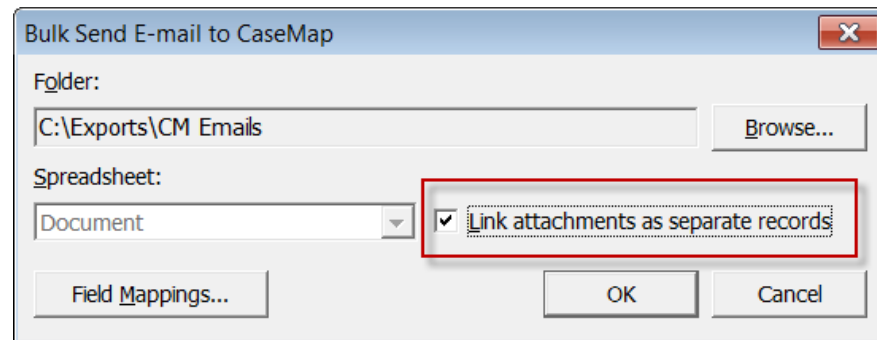
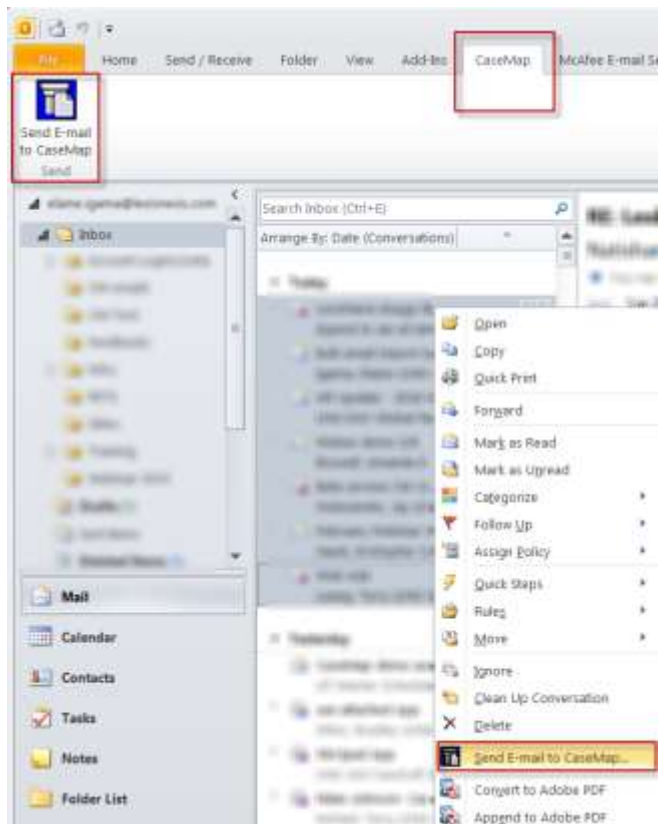
Find and Redact:

- Find and redact a word or phrase
- Redact privacy information such as DOB, SSN, Phone Number and Email Address
- Select or customize redaction reason

The image shows the 'Find & Redact' dialog box. It has a title bar with the text 'Find & Redact' and a close button. The dialog contains the following fields and options:

- Redact Word/Phrase:** A text input field containing the word 'miller'.
- Find whole word only:** A checkbox that is currently unchecked.
- Redact Privacy Information:** A section containing four checkboxes:
 - DOB
 - Phone Number
 - SSN
 - Email Address
- Redaction Reason:** A dropdown menu with 'Atty-Client' selected.
- Buttons:** 'Redact' and 'Cancel' buttons at the bottom right.

Expanded Outlook Plug-in



OBJECTS - DOCUMENTS

Name	Attachment(s)	Linked File
20160202_165130_CM	EDA-diagrams, EDA-LAW	..._20160202_165130_CM Test Email 02.msg - (Wind...
Linked File		
Windows Files - C:\Exports\CM Emails\20160202_165130_CM Test Email 02.msg		
Attachment(s) (2)		
EDA-diagrams - Windows Files - C:\Exports\CM Emails\20160202_165130_CM Test Email 02-EDA-diagrams.pdf		
EDA-LAWSystemReq - Windows Files - C:\Exports\CM Emails\20160202_165130_CM Test Email 02-EDA-LAW System req.pdf		

Document Production

Document Production Wizard

Header and Footer
Do you want to add header and footer content for the produced output?

Would you like to add header or footer content to produced documents?

Yes **No**

Header Text: Confidential Location: Top Center
Footer Text: Location: Top Left
Apply to: **All Produced Documents**
 Saved Filter

< Back Next > Cancel

Produce in **grayscale** colors

Document Production Wizard

Document Content Colors
How do you want the produced output to look?

Select one of these document content color options.

- Use the original document content colors.
- Convert all of the document content colors to grayscale.
- Display text in the document in black.

< Back Next > Cancel

Output to **TIFF** Image format

Document Production Wizard

Output Format
What output format do you prefer for the output files?

Please select an output format for the production set

- OCR PDF
- Image-based PDF
- Image-based PDF with OCR text file
- TIFF Image

< Back Next > Cancel

Import Linked File Wizard

Import Linked Files Wizard

Select Spreadsheet
Into which CaseMap spreadsheet do you want to import the files?

Select a spreadsheet.

Spreadsheet:

Would you like to identify a source for the files?

Yes No

< Back Next > Cancel

Import Linked Files Wizard

Identify source of imported files
Please specify the source information for the files.

Select a destination field:

Enter field value:

Mark records to be reviewed?

< Back Next > Cancel

Import Linked Files Wizard

Identify source of imported files
Please specify the source information for the files

Select a destination field:
Source of Doc

Enter field value:
Folder A

Mark records to be reviewed?

Select a destination field:
Review Status

Enter field value:
Select a value
Select a value
In Review
Reviewed

< Back Next > Cancel

Live Demonstration

Training | LexisNexis University

Public, private/custom classes available

Delivery Options: Web-based or on-site

Email: LNTraining@lexisnexis.com

Phone: 1-800-227-9597 x1252111



CaseMap Answer Center

<http://help.lexisnexis.com/litigation/ac/cm/cm12/index.html?welcome.htm>

CaseMap Technical Support

- Email: casemap.support@lexisnexis.com
- Phone: 1-800-833-3346 (option 3)
- Hours: Monday-Friday, 9:00 a.m. to 9:00 p.m. Eastern Time

Q & A
