

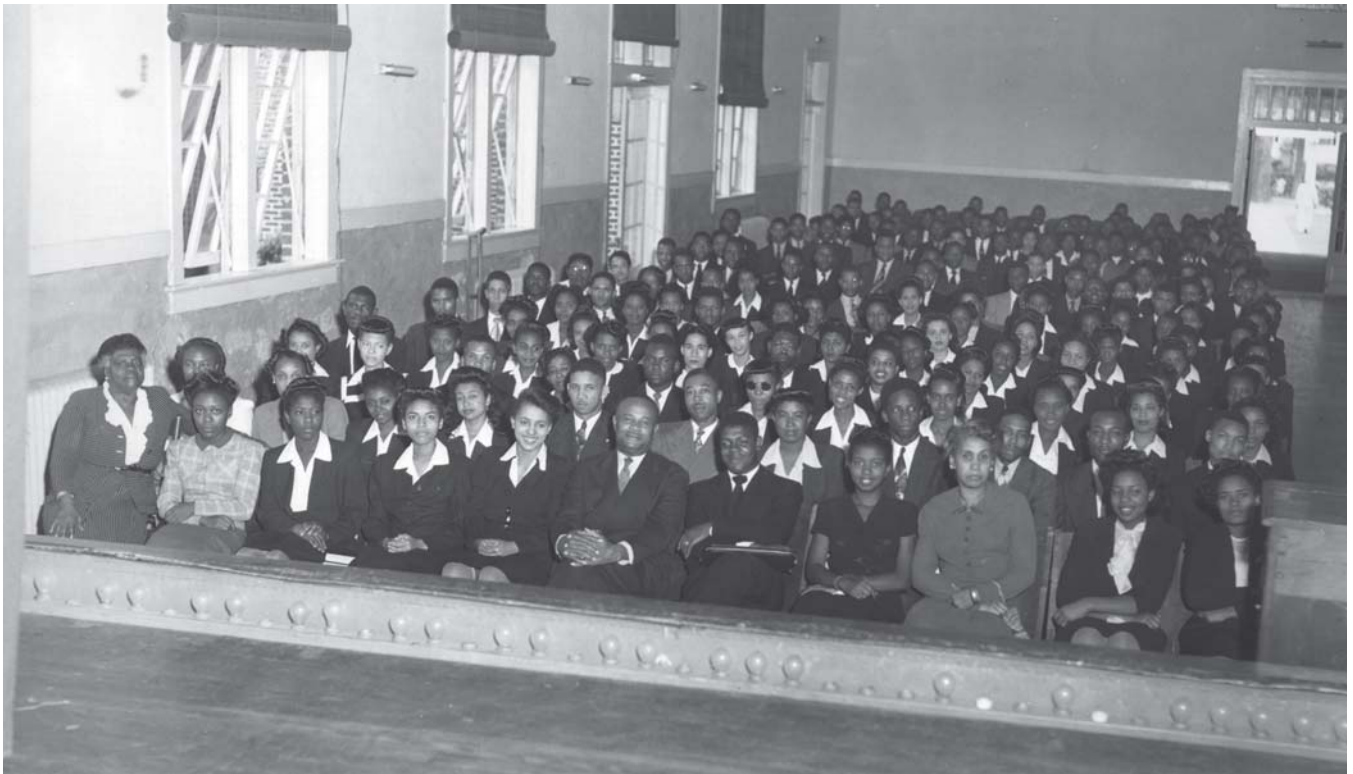
A Guide to the Microfilm Edition of

BLACK STUDIES RESEARCH SOURCES

Microfilms from Major Archival and Manuscript Collections

General Editors: John H. Bracey, Jr., and Sharon Harley

**Mary McLeod Bethune Papers:
The Bethune Foundation Collection**



**Part 4: Administration of Bethune-Cookman College and
the Mary McLeod Bethune Foundation, 1915–1955
and
Supplement to Part 4, Administration of Bethune-Cookman
College, 1924–1946**

A UPA Collection

from



Mary McLeod Bethune [front left] attending assembly with Bethune-Cookman College students.
Courtesy of Mary McLeod Bethune Foundation Archives.

BLACK STUDIES RESEARCH SOURCES
Microfilms from Major Archival and Manuscript Collections

General Editors:
John H. Bracey, Jr., and Sharon Harley

Mary McLeod Bethune Papers:
The Bethune Foundation Collection
Part 4: Administration of Bethune-Cookman College
and the Mary McLeod Bethune Foundation,
1915–1955
and
Supplement to Part 4, Administration of
Bethune-Cookman College, 1924–1946

Editorial Adviser
Elaine Smith
Alabama State University

Project Coordinator
Randolph H. Boehm

Guide compiled by
Ann W. Parks and Daniel Lewis

A UPA Collection from



4520 East-West Highway • Bethesda, MD 20814-3389

Library of Congress Cataloging-in-Publication Data

Bethune, Mary McLeod, 1875–1955.

Mary McLeod Bethune papers [microform] : the Bethune Foundation collection

microfilm reels. : 35 mm. — (Black studies research sources)

Contents: pt. 1. Writings, diaries, scrapbooks, biographical materials, and files on the National Youth Administration and women's organizations, 1918–1955. pt. 2. Correspondence Files, 1914–1955. pt. 3. Subject Files, 1939–1955. pt. 4. Administration of Bethune-Cookman College and the Mary McLeod Bethune Foundation, 1915–1955. supplement to pt. 4. Administration of Bethune-Cookman College, 1924–1946. / editorial adviser, Elaine M. Smith: project coordinator, Randolph H. Boehm.

Accompanied by printed guide with title: A guide to the microfilm edition of Mary McLeod Bethune papers.

ISBN 1-55655-826-0 (pt. 4. microfilm)—ISBN 1-55655-931-3 (supplement to pt. 4. microfilm)

1. Bethune, Mary McLeod, 1875–1955—Archives. 2. Afro-American women—Education—Florida—History—Sources. 3. United States. National Youth Administration—History—Sources. 4. National Association of Colored Women's Clubs (U.S.)—History—Sources. 5. National Council of Negro Women—History—Sources. 6. Bethune-Cookman College (Daytona Beach, Fla.)—History—Sources. I. Smith, Elaine M. II. Boehm, Randolph. III. Bethune-Cookman College (Daytona Beach, Fla.) IV. Title. V. Title: Guide to the microfilm edition of Mary McLeod Bethune papers. VI. Series.

[E185.97.B34]

370'.92—dc21

96-48361

CIP

The collection of papers, articles, and documents of Mary McLeod Bethune is the exclusive property of Bethune-Cookman College. Any use of these materials without the written permission of Bethune-Cookman College is strictly prohibited.

Copyright © 2003 by Congressional Information Service, Inc.

All rights reserved.

ISBN 1-55655-826-0.

ISBN 1-55655-931-3.

TABLE OF CONTENTS

Introduction	vii
Scope and Content Note	xvii
Source Note	xxi
Editorial Note	xxi
Abbreviations	xxiii

**Mary McLeod Bethune Papers: The Bethune Foundation Collection,
Part 4: Administration of Bethune-Cookman College
and the Mary McLeod Bethune Foundation, 1915–1955**

Reel Index

Reels 1–3

Series 1: Board of Trustees and Advisory Board, 1925–1955	1
---	---

Reels 4–7

Series 2: Administration of Bethune-Cookman College, 1929–1960.....	7
---	---

Reel 8

Series 2: Administration of Bethune-Cookman College, 1929–1960 cont.	12
Series 3: Publications and Publicity Materials, Bethune-Cookman College, 1895–1955	13

Reels 9–11

Series 3: Publications and Publicity Materials, Bethune-Cookman College, 1895–1955 cont.	14
--	----

Reel 12

Series 3: Publications and Publicity Materials, Bethune-Cookman College, 1895–1955 cont.	17
Series 4: Daytona Normal and Industrial Institute, Student Accounts, 1921	17
Series 5: Financial Records of Mary McLeod Bethune, the Daytona Normal and Industrial Institute and Bethune-Cookman College, 1920–1955	17

Reel 13

Series 5: Financial Records of Mary McLeod Bethune, the Daytona Normal and Industrial Institute and Bethune-Cookman College, 1920–1955 cont.	17
Series 6: Records of the Mary McLeod Bethune Foundation, 1952–1962 Subseries 1: General, 1952–1959	18

Reel 14	
Series 6: Records of the Mary McLeod Bethune Foundation, 1952–1962 cont.	
Subseries 1: General, 1952–1959 cont.	18
Reel 15	
Series 6: Records of the Mary McLeod Bethune Foundation, 1952–1962 cont.	
Subseries 1: General, 1952–1959 cont.	19
Subseries 2: Edward R. Rodriguez Files, 1954–1962	20
Reel 16	
Series 6: Records of the Mary McLeod Bethune Foundation, 1952–1962 cont.	
Subseries 2: Edward R. Rodriguez Files, 1954–1962 cont.	20
Reel 17	
Series 6: Records of the Mary McLeod Bethune Foundation, 1952–1962 cont.	
Subseries 2: Edward R. Rodriguez Files, 1954–1962 cont.	22
Subseries 3: Financial Records, 1952–1961	22
Reels 18–19	
Series 6: Records of the Mary McLeod Bethune Foundation, 1952–1962 cont.	
Subseries 3: Financial Records, 1952–1961 cont.	22
Reel 20	
Series 6: Records of the Mary McLeod Bethune Foundation, 1952–1962 cont.	
Subseries 3: Financial Records, 1952–1961 cont.	23
Series 7: Oversize Files, 1917–1959	23
Reels 21–22	
Series 7: Oversize Files, 1917–1959 cont.	24

**Mary McLeod Bethune Papers: The Bethune Foundation Collection,
Supplement to Part 4: Administration of Bethune-Cookman College,
1924–1946**

Reel Index

Supplement Reel 1	
Series 1: General Correspondence, 1915–1945	27
Supplement Reel 2	
Series 1: General Correspondence, 1915–1945 cont.	30
Series 2: Correspondence with the Board of Education of the Methodist Episcopal Church, 1927–1946	31

Supplement Reel 3

Series 2: Correspondence with the Board of Education of the Methodist
Episcopal Church, 1927-1946 cont..... 32
Series 3: Letters to Donors, 1928-1943..... 34
Series 4: Miscellaneous Files, 1927-1944..... 34

Principal Correspondents Index 37
Subject Index 45

INTRODUCTION

CONSIDERING RACE IN DEVELOPING A SCHOOL

More than anything else in the public imagination, Mary McLeod Bethune (1875–1955) is associated with education. After establishing what became Bethune-Cookman College (BCC) in 1904, Bethune enhanced her reputation as an educator when she became president of the Florida State Teachers Association in 1919. In 1923 and 1924, she garnered national attention for her service as president of the National Association of Teachers in Colored Schools and reached the pinnacle of her career during the New Deal and World War II, presiding over educational, training, and placement services for African American youth through the National Youth Administration. In the 1950s, Bethune became one of the best-known spokespersons for the United Negro College Fund, a cooperative financial campaign benefiting black colleges.

Educational Landscape

Though Mary McLeod Bethune was a leader in education through professional organizations, a federal agency, and later a national higher education fund, her public image was inseparably associated with the institution she founded in Daytona Beach, Florida, on October 3, 1904. According to lore, she began with “five little girls, a dollar and a half, and faith in God.” The institution bore several names—Daytona Educational and Industrial Training School for Negro Girls, Daytona Normal and Industrial Institute, Daytona-Cookman Collegiate Institute, and Daytona-Cookman College—before settling into Bethune-Cookman College.

The names reflect the institution’s history. It was an elementary school until the end of World War I, when a secondary tier was added and teacher training became the primary focus. In 1923, with 315 students, a twenty-five-member faculty and staff, and a debt-free \$250,000 campus of eight buildings plus a hospital, the school transformed again. The northern-based Methodist Episcopal Church assumed responsibility for the institution and merged it with Cookman Institute, named for Alfred Cookman, a white minister with a deep and abiding interest in Florida blacks. The co-ed Jacksonville school, roughly a hundred miles north of Daytona, had been founded in 1872 and had experienced a golden age before the new century. The merger brought male students and in 1924 the institute’s junior college department was established.

Over the next three decades, major transitions occurred for Bethune and her beloved BCC. In June 1936, she began a federal job in Washington. About that time, 177 students enrolled in the institution’s college division, 26 in high school, and 152 in the laboratory elementary school. Two big changes came in 1942: Bethune added a senior college curriculum and resigned the presidency. As emeritus president, Bethune remained active, even assuming the helm of the institution in 1946–1947. She continued college fund-raising into 1952, when she

shifted her energies to transforming the Mary McLeod Bethune Foundation from an idea into a reality. Still, she stayed attuned to college affairs, delighting in the school's fiftieth anniversary. When this remarkable personality died of a heart attack the next year, she was laid to rest on a shaded campus mound close to her home.

Although many young black women established schools during America's apartheid, the Bethune school is especially fascinating because it survives today as a strong, accredited institution under private auspices, currently celebrating its centennial anniversary. Bethune is one of the few women in the world to launch a viable baccalaureate institution. Even when Bethune-Cookman was a junior college, she was widely lauded, receiving in 1935 a Spingarn Medal from the NAACP, the most prestigious award in black America. Today, as Daytona tourists travel the International Speedway Boulevard from the airport to the white-sand beaches, they pass the southern campus of the expanded site Bethune claimed in 1907 as the permanent grounds of her institution.

Perhaps the most intriguing aspect of an African American woman in Daytona building a college during the first half of the twentieth century is her negotiation of society's devastating racial divisions. One gains insight into the stature of Mary McLeod Bethune and her contemporary educators of color by understanding the intransigent racism impeding the provision of quality educational experiences for African American students. Moreover, Bethune's gender was no asset; as she once observed, the "strangling clutch of die-hard tradition" permitted black men in certain social situations, but not black women.¹ As a woman, and usually the only black woman president inhabiting higher education circles, she could not access good ol' boy networks. And, despite the pervasive perception that she was the female Booker T. Washington, her school was Little League compared to Washington's Tuskegee Institute. While extending serious support to institutions headed by whites, and black men, mainstream America refused to similarly donate to a school conceived and administered by a black woman, no matter how deserving. Consequently, for over four decades Mary McLeod Bethune shouldered the burdens of operating a grossly underfinanced private institution. Commenting on her goals and desires in 1936, Bethune remarked that no matter the objective, "I find a limitation because I suffer the greatest known handicap, [which is to be] a Negro—a Negro woman."²

As in other areas of society, educational segregation perpetuated the inferior status of African Americans and superior position of Caucasians. In the first decades of the twentieth century, the South provided shamefully inadequate schools for its largest minority. Florida was no exception. Ten years after the state constitutionally mandated segregated education but with "impartial provision" for blacks and whites, it anticipated the U.S. Supreme Court *Plessy* decision with unequivocal specifics. "No individual, body of individuals, corporation or association," an 1895 statute declared, "shall conduct within this state any school of any grade—public, private or parochial—where white persons and Negroes are instructed or boarded in the same building or taught in the same classes or at the same time by the same teachers."³ With separate schools, the state then systematically denied black youngsters "impartial provision." In 1927, 98 percent of black school enrollment occurred in grades one through eight and 41 percent in the first grade. In that year, D. E. Williams, state agent for Negro schools, discovered that "drinking water, sanitary toilets, desks, blackboards, sufficient

textbooks, library books, a good heater and fuel were lacking in many of these schools. ... Often trees and bushes served for toilets.”⁴

Even though Daytona provided slightly better school accommodations for blacks than some other areas, the difference in blacks’ and whites’ educational experiences contrasted starkly. While the numbers of blacks and whites in the city were comparable (in 1910, blacks outnumbered whites by 136; in 1920, whites were the majority by 486), the public white high school graduated its first students in 1902, while a public black high school did not become reality until 1929, more than a quarter-century later.⁵

Major private black schools often stretched beyond the limitations of the white-controlled public schools for African Americans. Yet virulent racism reached private institutions as well. Compare Bethune-Cookman with another Florida college supported by the Methodist Episcopal Church, the white Southern College in Lakeland, which became Florida Southern in 1935. Southern College accumulated a \$500,000 endowment within twenty-one years; while it took BCC more than twice that time to achieve the same funding. Differences in economic resources partially accounted for this—but unrealistic racial attitudes held by whites also played a role. For instance, whites believed that black colleges required less money than white ones and that black administrators and educators could not put large sums to effective use; therefore black schools merited only missionary-type handouts, leftovers after other interests had been accommodated.⁶

Whether public or private, the majority of the 109 black institutions listed in a federal survey of black colleges in the mid-1920s were dealing with endemic hardships.⁷ These colleges had to enroll a number of students in secondary classes due to the lack of black public high schools. Moreover, they were extraordinarily underfunded. Black schools received little money from their small endowments, and families could not afford the tuition that white institutions usually could collect from their constituents.

Additionally, as the economy spiraled downward in the 1920s, black colleges discovered that their most significant individual donors were fading fast. This coincided with their desperate need for additional funding to become rated and accredited. In 1930 the Southern Association of Secondary Schools and Colleges began to provide a courtesy rating to black schools in its geographic field. Highly rated and otherwise qualified black institutions were denied accreditation, however, because it would have implied equality with whites. At the same time, southern state departments of education refocused educational assistance to promising schools seeking accreditation. Since black colleges and schools were unable to effectively work toward accreditation, they suffered a disproportionately harsh blow to their finances.

Summarizing insufficiencies of black colleges in the Great Depression, scholar Dwight Holmes explained, “During the few years which the Negro college has existed students, faculty, and administrators have been largely engaged in a desperate struggle for mere survival.”⁸ BCC is a case in point. In the 1930s, Bethune almost killed herself to acquire minimum financing. Although exhibiting a brave and optimistic public face, she knew she might succumb to a physical breakdown unless relieved by adequate funding for the urgent needs of the college. The strain brought on a collapse requiring extensive recuperation in 1931 and other serious illnesses later. In 1936, when Bethune began work as a federal administrator, it was the imperative to discover new college funding that pushed

her to the nation's capital. There she maximized opportunities to pitch BCC, prevailing upon First Lady Eleanor Roosevelt to hold fund-raisers in the White House. These tactics helped the indomitable college president to keep her institution open.

Behind the Color Line

Decades earlier, when Mary McLeod Bethune started life anew in 1904 Daytona, her experience teaching at Kendall Institute in South Carolina and later managing the Mission School in Palatka, Florida, gave her the determination to develop a high-quality learning center for African American women. Bethune strategized to cultivate strong support within the African American community and obtain substantive funding from whites, for they possessed the country's wealth. From the beginning Bethune the school builder was inseparable from Bethune the race leader. The job description required her "to maintain the confidence of a mostly impoverished, disenfranchised and defenseless people" while crossing the "racial divide to influence white movers and shakers to permit blacks greater opportunities without arousing animosity." For Bethune to be productive and acceptable to both races simultaneously would be an art.⁹

Mary McLeod Bethune was powerfully motivated to make Bethune-Cookman a success. With no other black college in peninsular Florida south of St. Augustine—only one public college existed in the whole of Florida for African Americans, Florida A&M, in Tallahassee—Bethune took pride in the contributions her institution made to Florida, especially in teacher education. Without BCC and its antecedents, thousands would have lost the chance to go to college. Bethune found motivation in demonstrating that her achievements were equal to those of others with more resources. At an elemental level she was driven to teach pride to African Americans and to educate whites about the possibilities of a people once enslaved. Maintaining a school was her personal testimony to racial dignity.¹⁰

In her racially torn world, Mary McLeod Bethune's first priority in establishing a school was winning backing from the locals of color. While some may have initially opposed her for what they considered training for servant jobs—maids, cooks, farmhands, and seamstresses—the majority viewed her school as a godsend. They were delighted that her courage permitted desegregated seating on campus, something that continued to startle people in the 1940s. Local blacks also approved of the school's educational climate. In 1929, after sociologist W. E. B. Du Bois sat down with junior college students there, he reported, "Goodness! But they walked into things. There were no hesitations or reticences. They started right out with social equality, racial intermarriage, companionate marriage, the sex morality of the younger generation, occupations, and so on. It was a breathless living hour," he concluded, "and quite worth going to Florida for."¹¹

While supporting this school of free-thinking collegians males and females contributed from different positions, since society was strictly divided by gender. When Bethune begged for the school in churches, she had to obtain consent from the pastor, virtually always a man. The most cooperative was Author L. James, shepherd of Mount Bethel Baptist, Daytona's oldest church. Not only did he allow Bethune to raise collections in his church, but on the first day of her school, he helped sweep it and arrange the orange crates that the girls would sit on. In 1905, when the school assembled a board of trustees, A. L. James served as the secretary. Bethune's husband, Albertus, was on the board, too. Other black men followed,

including Emmett J. Scott, best known as Booker T. Washington's secretary, and G. D. Rogers of the Central Life Insurance Company in Tampa. After the Methodist Church assumed responsibility for the school, some of its black clergy in 1936 were among the trustees.

If Bethune had her way, race brethren would have had the ultimate say about her institution, for during its all-girls phase she pursued the sponsorship of her denomination, the male-controlled African Methodist Episcopal Church. Though the area's presiding bishop, the Right Reverend John Hurst, sat on the Daytona Institute's Board of Trustees, his passion was educating preachers at the church's Edward Waters College, founded in 1866 and located in Jacksonville. Lacking his support, Bethune recognized the futility of her efforts and sought another church sponsor, since black institutions lacking either denominational or government oversight had little likelihood of surviving.

Though rarely in leadership positions, black women contributed substantially to the institution, enrolling their daughters and spreading word of its existence and offerings. The numbers of women supporters increased considerably in 1912, when Bethune joined the National Association of Colored Women, indisputably the era's most important national body of race women. In the early 1930s, under the inspired leadership of Tampa's Blanche Armwood Washington, its Florida affiliate gave liberally to Bethune-Cookman. Even more notable for her support was Ada M. Lee of Jacksonville, who organized in 1927 the Mary McLeod Bethune Circle, which consistently made donations to the college for decades.

As teachers, however, black women extended unique assistance to the Bethune school when it was all-female. An external evaluator deemed these teachers well-trained, capable, and "devoted to their work."¹² Without them, Bethune would have been without a faculty, since Florida law prohibited white teachers from working under African American leadership and black men were unavailable. Therefore, other than the farm manager, Bethune staffed the girls' school exclusively with black women, including Susie Grant, Elizabeth Odis, Frances Kyle, Josie Roberts, and Julia Davis, to name a few. One of the most popular teachers in the 1910s was Portia Smiley of Hampton Institute in Virginia and the Pratt Institute in Brooklyn, a favorite for teaching basketry, broom-making, rug-weaving, and other crafts. Excluding Bethune, the Daytona school's most outstanding teacher was Frances Reynolds Keyser, a graduate of Hunter College in New York and a veteran teacher, social worker, and NAACP activist. She and Bethune were indeed soul mates committed to elevating blacks and advancing their institution. When Bethune-Cookman started an elementary school in the 1930s as a laboratory for its teacher-education division, it was named in honor of Frances Keyser.

Civic Leadership

In addition to gaining black support of the Daytona school, Bethune provided the local community with civic leadership. She became involved in a local temperance debate, even though the issue would be resolved by a male-only vote.

She put 350 marching and singing children in the streets. "I was waiting at the poll," she remembered, "and as the men passed me I begged them in the names of their families and the citizenship with which they could do so much, to vote dry—and they did."¹³

From the temperance victory, Bethune never relinquished her local leadership initiative. When women were enfranchised nationally in 1920, Bethune conducted a voter registration drive. On the first day voter rolls opened to women, she turned up with her faculty and staff and other black women who had attended her citizenship classes. During the registration period, 460 black women signed the rolls, compared to 488 white women. Among men, 167 blacks and 87 whites registered, undoubtedly related to the women's activities.¹⁴

Daytona whites did not welcome African Americans to the polls. Before one election, seventy-five to a hundred hooded Ku Klux Klan (KKK) terrorists conducted a night march at the female Daytona Institute, attempting to discourage blacks by shouting "white supremacy." Bethune was not intimidated. At 8:00 the next morning, "with a band of women as far back as you could look," she recalled, "we marched up to the polls and we stood there for hours and hours until we got our chance and cast our votes."¹⁵ It may be argued that because she was a woman, Bethune's leadership was less objectionable to whites, but as the KKK rally demonstrated, black women were not safe from persecution and violence in Florida.

Involvement of Whites

While maintaining her support base in the African American community, Bethune approached northern whites, particularly those who wintered in the enchanting Daytona resort area. Their aid helped the Daytona Institute become, as Dr. I. Garland Penn of the Methodist Episcopal Church reported in 1923, "one of the best and most statesmanlike projects I have yet seen for our people."¹⁶ Bethune obtained the respect of blacks as she took on their issues while successfully cultivating affluent whites. Always in the language of diplomacy and with an appealing personality, she won white favor in multiple ways. She pitched the school as a missionary enterprise. She maximized its vocational image because so many believed that black education and vocational training should be synonymous. She stressed mutual interests between the races, particularly during World War I. She told whites what they wanted to hear, talking of love and brotherhood, rather than lecturing on the brutal denial of political and economic rights to black people. She began a Sunday afternoon entertainment and enlightenment forum, the Community Meeting, which whites and blacks equally enjoyed. This was one of many structures Bethune maintained to promote white involvement in the school.

Like black men and women, whites who supported Bethune's institution often did so in a divergent manner or through separate organizations. The institutional niche for white men was the Trustee Board, although two men that Bethune most aggressively identified with her school—Simon Peabody, lumber and philanthropy luminary, and Thomas White of White Sewing Machines—were not members. Nonetheless, white men dominated the Trustee Board from 1905 into the 1930s. Initially, they constituted two-thirds of a nine-member body and held the offices of chair, vice-chair, and treasurer. By 1936, they made up half of a forty-six-member board and retained the first two offices while a white woman occupied the third. No trustee better served the school, nor was ballyhooed more by Bethune, than James N. Gamble, of Ivory soap fame and Procter and Gamble. In addition to serving as board chairman from 1905 to 1923, Gamble personally insured Bethune's health care and provided other necessities.

While unsung in comparison with white men, it was the unprecedented cooperation and visibility of a group of white women at the Daytona Normal and Industrial Institute that probably prompted I. Garland Penn to appraise it as a “statesmanlike” project. In 1905, five white women and Bethune constituted the school’s Superintending Board, a name accurately indicating its hands-on work. The board later became known as the Ladies Advisory Board, and then the Women’s Advisory Board. Other than Bethune, African Americans made their debut on the Advisory Board only after the school became a junior college. In 1942 30 percent of the seventy-three members were black.

Describing the Advisory Board in 1929, Bethune affirmed, “This group of consecrated self-sacrificing women has rendered a service whose value is beyond calculation,—an altruistic service as varied as the activities of the school itself.... Powerful in material support, noble in spirit, they have been veritable ministering angels to the administration.”¹⁷ While given to hyperbole, Bethune did not exaggerate, for the Women’s Advisory Board greatly facilitated institutional development. Its members helped to administer and publicize the school, as well as raise money. Moreover, they increased Bethune’s efficiency, improved students’ racial attitudes, shielded the institution from potential acts of racist extremists, and encouraged Bethune’s zealotry as an adviser in the National Youth Administration.

The Advisory Board’s most prestigious members, Lady Armstrong of British nobility and social worker Jane Addams of Chicago’s Hull House, loaned their names but not much of their time. The board claimed many energetic members from the Daytona area, however, including Dora E. Maley, Ella L. O’Neill, Alexina M. Wilder, Harriet Ruger Longdon, Fannie Bates, Embury Chapmen, Laura Reinhart Mellour, Sarah Frances Anderson Ainsworth, Helen R. Stuart, and Margaret Rhodes. The best-known activist members were Cynthia M. Ranslow, a local resident transplanted from New England, and Louise Meigs of Bronxville, New York. Ranslow reigned over a shining period in the board’s history, from 1923 to 1936. In 1944, she bequeathed \$48,000 to BCC. Louise Meigs, a Vassar Alumni president, inherited an interest in the Daytona School from her mother, Sarah Lawrence. During her many years with the Bethune-Cookman Association of New York, Meigs boldly approached family and friends on behalf of the Daytona institution, although most were far removed from the poverty of any southern black school.

Conclusions

During the first half of the twentieth century, while the racial inequalities in the U.S. educational system seemed insurmountable, the extraordinary Mary McLeod Bethune successfully maneuvered across its treacherousness in Daytona Beach, Florida, a racially closed society.¹⁸ Often quoted as saying “I believe in God and I believe in Mary McLeod Bethune,” she demonstrated as much, using slim material assets to transform an elementary school into a senior college for the country’s most challenged minority. No other woman and probably no other educator has borne the hardships of maintaining a virtually unfunded school over forty years as Bethune did. Mostly she worked with the races separately, winning the confidence of each, and in the process becoming a race leader involved in civic developments both in and beyond education.

Stateswoman Bethune utilized multiple strategies, including accommodating the race-gender divide of her era. Men and women, both black and white, contributed to the school in ways that reflected their social positions. All four race-gender groups in Bethune's world were essential to the success of the Daytona school. It is particularly interesting how Bethune managed to convert her gender into an asset, in defiance of the era's conventional wisdom that considered a woman, especially a black one, unsuited for creating a college. Bethune turned handicap into stepping stone by mobilizing corps of black and white women, working independently of each other but cooperating with Bethune and her staff, in the collective interest of a better girls' school, normal institute, junior college, and baccalaureate institution.

Elaine M. Smith
Department of History
Alabama State University, Montgomery

Notes

1. Bethune, "A Century of Progress of Negro Women," June 30, 1933, Mary McLeod Bethune Papers, Amistad Research Center, Tulane University.

2. Bethune indicated the sweeping reach of racism and gender prejudices in declaring, "Whether it be my religion, my aesthetic taste, my economic opportunity, my educational desire, whatever the craving is, I find a limitation because I suffer the greatest known handicap, a Negro—a Negro woman." "Closed Doors," *Mary McLeod Bethune: Building a Better World*, eds. Audrey Thomas McCluskey and Elaine M. Smith (Bloomington: Indiana University Press, 1999), p. 208.

3. J. Irving Scott, *The Education of Black People in Florida* (Philadelphia: Dorrance and Co., 1974), p. 74.

4. D. E. Williams, "Improvement of Education for Negroes in Florida," in *The East Coast of Florida: A History*, ed. Ellwood C. Nance (Delray Beach, Florida: Southern Publishing Co., 1961), Vol. I, p. 621.

5. The white population in these years was 1,469 and 2,964; the black population was 1,605 and 2,478. *Thirteenth Census of the United States Taken in the Year 1910, Volume II* (Washington: Government Printing Office, 1913), p. 332; *Fourteenth Census of the United States Taken in the Year 1920, Volume III* (Washington: Government Printing Office, 1922), p. 196; *Daytona Morning Journal*, November 7, 1916, n.p.; the "Daytona Colored School" as a junior-senior high school appeared for the first time in the *State Educational Directory, 1929–1930* (Department of Public Instruction, State of Florida), pp. 22–23.

6. Robert M. Temple, *Florida Flame: A History of the United Methodist Church* (Florida Conference Commission on Archives and History, 1987), p. 250; James P. Brawley, *Two Centuries of Methodist Concern: Bondage, Freedom, and the Education of Black People* (New York: Vantage Press, 1974), pp. 525–526.

7. Bureau of Education, Department of the Interior, *Survey of Negro Colleges and Universities* (Washington: U.S. Government Printing Office, 1929).

8. Dwight Oliver Wendell Holmes, *The Evolution of the Negro College* (New York: Teachers College, Columbia University, 1934), p. 201.

9. Elaine M. Smith, "Introduction: Politics and Public Issues," *Bethune: Building a Better World*, eds. McCluskey and Smith, pp. 200–201.
10. Elaine M. Smith, "Mary McLeod Bethune's 'Last Will and Testament': A Legacy for Race Vindication," *Journal of Negro History*, 81 (Spring, Summer, Winter, Fall 1996), pp. 115–117.
11. Du Bois, "Pilgrimage to Negro Schools," *The Crisis* (February 1929), p. 44.
12. Thomas Jesse Jones, ed., *Negro Education: The Study of the Private and Higher Schools for Colored People in the United States* (Washington: Government Printing Office, 1917), pp. 510–511.
13. "Mrs. Bethune's Daytona School a Civilizer," *New York Times Magazine*, March 5, 1916, p. 8.
14. *Daytona Morning Journal*, September 21, 1920, p. 1, October 16, 1920, p. 1, November 3, 1920, p. 1, and November 7, 1920, p. 3.
15. Mary Church Terrell, the first president of the National Association of Colored Women, had been visiting the Daytona Institute when the KKK demonstrated there. She verified Bethune's account of the incident in the 1938 annual meeting of the National Council of Negro Women, Proceedings of Annual Meeting, November 26, 1938, pp. 54–56, NCNW Papers, Series 2, Box I, Folder 4, Mary McLeod Bethune Council House, National Historic Site, National Park Service, Washington, D.C.
16. Penn quoted in Brawley, *Two Centuries of Methodist Concern*, p. 186.
17. Bethune, "To the Trustee and Advisory Boards....," *The Advocate* [Periodical of Bethune-Cookman College] 26 (1929–1930), p. 5.
18. Snyder, "Daytona Beach: A Closed Society," *Florida Historical Quarterly*, 81 (Fall 2002), pp. 155–185.

SCOPE AND CONTENT NOTE

This guide covers the final two parts of the *Mary McLeod Bethune Papers: The Bethune Foundation Collection*. These are *Part 4: Administration of Bethune-Cookman College and the Mary McLeod Bethune Foundation, 1915–1955*, and *Supplement to Part 4: Administration of Bethune-Cookman College, 1924–1946*. These materials come from the Bethune Foundation Archives on the campus of Bethune-Cookman College, Daytona Beach, Florida. The records in Part 4 and the Supplement to Part 4 focus on the daily administration of Bethune-Cookman College (BCC), particularly the financial pressures and fund-raising challenges faced by the college. The establishment of the Mary McLeod Bethune Foundation is also a major focus of Part 4. Earlier parts of UPA's *Mary McLeod Bethune Papers: The Bethune Foundation Collection* cover other aspects of Bethune's varied career, particularly her leadership of the National Association of Colored Women and the National Council of Negro Women, and her government service with the National Youth Administration. Further, *Mary McLeod Bethune Papers: The Bethune-Cookman College Collection, 1922–1955*, contains administration records on the college from the Bethune-Cookman College Archives.

Part 4: Administration of Bethune-Cookman College and the Mary McLeod Bethune Foundation, 1915–1955, is organized into seven series.

Series 1: Board of Trustees and Advisory Board, 1925–1955

This series consists of financial records, correspondence, reports, and minutes of Board of Trustees and Advisory Board meetings. Bethune kept carbon copies of her outgoing correspondence, and her correspondence with board members is included in this series. Bethune's dedication to maintaining and improving the college is clearly evident. The fund-raising and overall financial needs of BCC are a constant and grave concern. Bethune struggled mightily, particularly in the 1920s and 1930s, to save the college from financial collapse. Correspondence between board members is primarily from the 1930s and 1940s and reveals the significant impact of the Great Depression on college finances and student enrollments. This series also includes reports to the board and minutes of board meetings from 1936 to 1955. Prominent correspondents in this series include Mary McLeod Bethune, Louise L. Meigs, James A. Colston, Will W. Alexander, Bertha L. Mitchell, Frederick T. Keeney, M. S. Davage, Cynthia M. Ranslow, Roger N. Baldwin, and Richard V. Moore.

Series 2: Administration of Bethune-Cookman College, 1929–1960

This series primarily consists of correspondence and reports pertaining to the administration of BCC. There are discussions of the school's academic programs, course outlines, faculty and staff lists, and statistics on student enrollment. Fund-raising again emerges as a major theme. Prominent correspondents in this series

include Bethune, M. S. Davage, Mordecai W. Johnson, Lester B. Granger, Herbert M. Davidson, Ralph J. Bunche, Helen Gahagan Douglas, Herbert H. Lehman, Rayford W. Logan, and Langston Hughes.

Series 3: Publications and Publicity Materials, Bethune-Cookman College, 1895–1955

This series includes mailing lists, pamphlets, correspondence, and other materials pertaining to the public relations efforts of BCC. The earliest document in this series is a pamphlet from the Cookman Institute's 1895 commencement. A 1921 issue of the *Southeastern Herald*, the newsletter of the Southeastern Federation of Colored Women's Clubs, has a brief biographical essay on Bethune and an article on Daytona Normal and Industrial Institute. This series also includes several pamphlets that provide information on BCC's academic programs, scholarships, and financial aid.

Series 4: Daytona Normal and Industrial Institute, Student Accounts, 1921

This brief series consists of a list of students and fees for 1921. Other documents pertaining to Daytona Normal and Industrial Institute can be found in Series 3: Publications and Publicity Materials, Bethune-Cookman College, 1895–1955, and Series 7: Oversize Files, 1917–1959.

Series 5: Financial Records of Mary McLeod Bethune, the Daytona Normal and Industrial Institute and Bethune-Cookman College, 1920–1955

This series consists of personal financial records of Mary McLeod Bethune, and financial records from the late 1940s and 1950s for BCC. Bethune's personal financial records include cancelled checks for 1920 through 1927, 1939, and 1943 through 1946. There is also a cash book for 1929 through 1931, and receipts, primarily for insurance payments, spanning from 1921 to 1950. The financial records of BCC in this series include expense accounts for Bethune, petty cash reports, and budgets for 1953–1954 and 1954–1955. Other financial records for BCC, particularly those related to fund-raising, can be found in Series 1: Board of Trustees and Advisory Board, 1925–1955, and Series 2: Administration of Bethune-Cookman College, 1929–1960.

Series 6: Records of the Mary McLeod Bethune Foundation, 1952–1962

This series pertains to the establishment of the Mary McLeod Bethune Foundation as a nonprofit research institution and archives on the campus of BCC. This series consists of three subseries. The first subseries reproduces the articles of incorporation and by-laws of the foundation. It also includes correspondence on the establishment of the foundation, fund-raising, and minutes of meetings of the board of trustees. The second subseries consists of the correspondence of Bethune's foster son, Edward R. Rodriguez, who became director of the foundation following Bethune's death in 1955. Rodriguez's files indicate that the foundation suffered a loss of momentum after Bethune's death. The third subseries is financial records of the foundation, including bank statements, cancelled checks, disbursement vouchers, ledgers, and paid bills.

Series 7: Oversize Files, 1917–1959

The items in this series consist of materials that are larger than the 8.5" X 11" documents in the other parts of this collection. These files, therefore, cover many of the same topics covered in other series of the collection. There are letters pertaining to BCC fund-raising and administrative matters, mailing lists, brochures about the college, annual reports to the Board of Trustees, and student accounts.

Supplement to Part 4: Administration of Bethune-Cookman College, 1924–1946

This portion of the Bethune Foundation Collection consists of four series pertaining to the administration of BCC. These files, like the other parts of the *Mary McLeod Bethune Papers*, reveal Bethune to have been a very active and involved president, taking part in all aspects of running BCC, from the hiring of teachers, to fund-raising, to making decisions about courses, and meeting with the board of trustees. The first series consists of Bethune's correspondence regarding administrative matters. The second series is correspondence with the Board of Education of the Methodist Episcopal Church, which advised and assisted in managing the college, after the merger with the Cookman Institute in 1923. A series of correspondence with donors again reflects the importance of fund-raising in maintaining a small, private college. The collection concludes with several miscellaneous documents covering BCC graduates, fund-raising, and student loans.

Related Collections

There are also substantial portions of papers pertaining to Bethune in other collections microfilmed by UPA. These include:

New Deal Agencies and Black America

The Papers of Eleanor Roosevelt, 1933–1945

Records of the National Association of Colored Women's Clubs, 1895–1992, Part 1:

Minutes of National Conventions, Publications, and President's Office

Correspondence

Papers of the NAACP

Part 11: Special Subject Files, 1912–1939

Part 14: Race Relations in the International Arena, 1940–1955

Part 16: Board of Directors Correspondence and Committee Materials, 1919–1955, Series B: 1940–1955

Part 18: Special Subjects, 1940–1955, Series B: General Office Files: Abolition of Government Agencies–Jews

SOURCE NOTE

The materials in this microfilm edition were filmed from the Mary McLeod Bethune Foundation Archive, Bethune-Cookman College campus, Daytona Beach, Florida. Permission to reproduce or quote extensively from these materials should be sought from the Bethune Foundation director.

EDITORIAL NOTE

This guide covers the final two editions of materials microfilmed by UPA of the Mary McLeod Bethune Papers held by the Mary McLeod Bethune Foundation. These editions are *Part 4: Administration of Bethune-Cookman College and the Mary McLeod Bethune Foundation, 1915–1955*, and *Supplement to Part 4: Administration of Bethune-Cookman College, 1924–1946*. The materials in the Supplement to Part 4 were discovered by the staff at the Bethune Foundation archives after the microfilming of Part 4 had been completed. With the completion of Part 4 and the Supplement to Part 4, the Mary McLeod Bethune Papers in the archives of the Bethune Foundation have been microfilmed in their entirety. Administrative records for the foundation from after Bethune's death in 1955 have not been included in this publication.

Researchers should also note that UPA earlier filmed an edition of *Mary McLeod Bethune Papers: The Bethune-Cookman College Collection, 1922–1955*. This is a separate body of records from those at the Bethune Foundation. As far as it has been possible to determine, there is little, if any, overlap.

ABBREVIATIONS

The following abbreviations and acronyms are used throughout this guide.

BCC	Bethune-Cookman College
CIO	Congress of Industrial Organizations
GI	Government Issue [Army]
NAACP	National Association for the Advancement of Colored People
NCNW	National Council of Negro Women
NYA	National Youth Administration
ROTC	Reserve Officers Training Corps

REEL INDEX to Part 4

The following is a listing of the folders comprising *Mary McLeod Bethune Papers: The Bethune Foundation Collection, Part 4: Administration of Bethune-Cookman College and the Mary McLeod Bethune Foundation, 1915–1955*. The four-digit number on the far left is the frame at which a particular file folder begins. This is followed by the file title, the date(s) of the file, and the total number of pages. Substantive issues are highlighted under the heading *Major Topics*, as are prominent correspondents under the heading *Principal Correspondents*.

Reel 1

Frame No.

Series 1: Board of Trustees and Advisory Board, 1925–1955

- 0002 **Board of Trustees, Endowment Campaign, 1949.** 49 pp.
Major Topic: BCC endowment campaign.
Principal Correspondents: Mary McLeod Bethune; Melvyn Douglas; Eileen H. Butts; Richard V. Moore.
- 0051 **Board of Trustees, Executive Committee, 1947–1955.** 65 pp.
Major Topics: Board of Trustees meetings and members; fund-raising; endowment campaign; faculty and staff salaries; budget; building repairs and improvements; Building Committee; list of recommendations concerning BCC; Women's Advisory Board annual report; Marian Anderson and Camilla Williams concerts; by-laws of BCC.
Principal Correspondents: Bertha L. Mitchell; Lee Nichols; Mary McLeod Bethune; Richard V. Moore; Paul Raymond; J. W. E. Bowen; Elizabeth E. Wellington.
- 0116 **Board of Trustees and Advisory Board Correspondence, "A," 1930–1944.** 48 pp.
Major Topics: BCC financial condition; fund-raising; commendation of Women's Advisory Board by Board of Trustees; federal antilynching legislation; BCC Board of Trustees meetings and members.
Principal Correspondents: Will W. Alexander; Mary McLeod Bethune; Clara A. W. Allen; T. A. Adams; James A. Colston.
- 0164 **Board of Trustees and Advisory Board Correspondence, "B," 1930–1944.** 80 pp.
Major Topics: Appropriations from BCC Board of Trustees; BCC financial condition; enrollment; building campaign; fund-raising; Women's Advisory Board; BCC Board of Trustees meetings and members; search for new BCC president.
Principal Correspondents: Anna L. Brush; Sarah H. Beatty; Mary McLeod Bethune; H. W. Bartley; Eileen H. Butts; Stella W. Brummitt; Bertha L. Mitchell; Louise C. Ball; James A. Colston; Albert M. Bethune; R. Ira Barnett.

- 0244 **Board of Trustees and Advisory Board Correspondence, "C," 1930–1944.** 73 pp.
Major Topics: Photographs of BCC; financial assistance for teaching budget; Board of Trustees meetings and members; enrollment; BCC financial condition; fund-raising; Women's Advisory Board members; scholarships; illness and death of student.
Principal Correspondents: H. G. Conger; Mary McLeod Bethune; M. Jones Cannon; N. W. Collier; William M. Cobb; Mabel Carney; Anna L. Brush; Thomas T. Cobb; Bertha L. Mitchell; Emma J. Colyer; Lucie E. Campbell; James A. Colston.
- 0317 **Board of Trustees and Advisory Board Correspondence, "D," 1930–1944.** 81 pp.
Major Topics: Board of Trustees meetings and members; fund-raising; music scholarship; BCC financial condition; budget; Women's Advisory Board members and dues; division of Board of Trustees into Executive and Advisory Trustees; Harrison Rhodes Memorial Library; administration of endowment fund; male enrollment.
Principal Correspondents: G. Edward Dickerson; Mary McLeod Bethune; Mary E. Davidson; Addie W. Dickerson; M. S. Davage; Hubert T. Delany; Bertha L. Mitchell; Amelia Davis; Herbert M. Davidson; James A. Colston.
- 0398 **Board of Trustees and Advisory Board Correspondence, "F," 1930–1942.** 54 pp.
Major Topics: Women's Advisory Board meeting with University of Florida faculty and recommendations for BCC; Women's Advisory Board meetings and members; BCC financial condition; fund-raising; Board of Trustees members and meetings; enrollment and endowment; payment of student balances; gifts and contributions; accounting of endowment fund.
Principal Correspondents: Mary McLeod Bethune; Charles W. Flint; Bertha L. Mitchell; Bert Fish; Herbert M. Fillebrown; Gertrude W. Filondon; Veva Rees Friend.
- 0452 **Board of Trustees and Advisory Board Correspondence, "G," 1930–1944.** 15 pp.
Major Topics: Amended BCC charter; Women's Advisory Board officers and new members; Board of Trustees members and meetings; accounting matters.
Principal Correspondents: Mary McLeod Bethune; E. A. Graham; May Getzendanner; Bertha L. Mitchell; James A. Colston.
- 0467 **Board of Trustees and Advisory Board Correspondence, "H," 1930–1944.** 103 pp.
Major Topics: Board of Trustees members and meetings; Women's Advisory Board members; BCC financial condition; fund-raising; endowment campaign; Harrison Rhodes Memorial Library.
Principal Correspondents: Stanley High; Mary McLeod Bethune; Mae Reese Hawkins; Roger N. Baldwin; W. A. C. Hughes; Florence J. Hunt; Laura E. Horrace; Albert M. Bethune; Elizabeth V. Harkness; Merrill J. Holmes; Enos C. Harley; Marcia Henry; Bertha L. Mitchell; John Hammond; James A. Colston.
- 0570 **Board of Trustees and Advisory Board Correspondence, "J," 1931–1944.** 65 pp.
Major Topics: Board of Trustees meetings and members; fund-raising; BCC financial condition; meeting of the Association of Colleges and Secondary Schools for Negroes.
Principal Correspondents: Perry B. James Jr.; Mary McLeod Bethune; Libbie H. Jones; Charles S. Johnson; Thomas E. Jones; Joseph H. James; James A. Colston; Bertha L. Mitchell.

- 0635 **Board of Trustees and Advisory Board Correspondence, Frederick T. Keeney, 1930–1935.** 69 pp.
Major Topics: Board of Trustees meetings; fund-raising; BCC financial condition; correspondence from missionaries; enrollment; building dedications; budget.
Principal Correspondents: Frederick T. Keeney; Mary McLeod Bethune.
- 0704 **Board of Trustees and Advisory Board Correspondence, “L,” 1930–1944.** 304 pp.
Major Topics: Board of Trustees meetings and members; Women’s Advisory Board members; fund-raising; BCC financial condition; Jacksonville concert of Bethune-Cookman singers; request for Daytona Beach sand; Bethune’s work with the Florida Federation of Colored Women’s Clubs; invitation to join the NYA; Durkeeville federal housing project (Jacksonville); endowment campaign; scholarships; domestic science department; Roland Hayes concert tickets; Irma Margaret Allen concert; collection of sugar and other drives to benefit BCC; Mary McLeod Bethune Circle; error concerning Women’s Advisory Board dues; Afro-American Life Insurance Company.
Principal Correspondents: Mary McLeod Bethune; Ralph Long; Lea M. Luquer; Ada M. Lee; Anne Pierrepont Luquer; A. L. Lewis; Bertha L. Mitchell; R. O’Hara Lanier; James A. Colston.

Reel 2

Series 1: Board of Trustees and Advisory Board, 1925–1955 cont.

- 0002 **Board of Trustees and Advisory Board Correspondence, “M,” 1929–1944.** 273 pp.
Major Topics: Board of Trustees members; Women’s Advisory Board meetings and members; BCC financial condition; decoration of living room of girls’ dormitory; fund-raising; art donations; endowment campaign; International Labor Defense; NAACP; improvements in buildings, curriculum, and staff; proposal for Marian Anderson and Roland Hayes to appear at spring festival; Bethune portrait; Harrison Rhodes Memorial Library.
Principal Correspondents: Mary McLeod Bethune; N. K. McGill; Leila Livingston Morse; Robert R. Moton; W. G. Marshall; Ferris J. Meigs; Louise L. Meigs; A. G. Mickens; W. S. Snead; Bertha L. Mitchell; Arthur J. Moore; Elizabeth L. Mead; Jesse L. Murrell; James A. Colston.

0275 **Board of Trustees and Advisory Board Correspondence, "P. J. Maveety," 1925–1928.** 152 pp.

Major Topics: Board of Education of the Methodist Episcopal Church and Department of Educational Institutions for Negroes; review of salaries and expenses of presidents and teachers; BCC reports; meeting of college presidents at Morristown Normal and Industrial College; life insurance policy on Bethune; financial problems of Methodist Episcopal Church Board of Education and BCC; college status of BCC; financial obligations of Methodist Episcopal Church Board of Education with respect to BCC and other educational institutions; request for pictures of BCC; newspaper article on Bethune and BCC; endowment campaign records; Board of Trustees meeting; need for repairs at BCC; donation of BCC land for a hospital for African Americans; fire insurance; reductions in appropriations to schools; return of BCC endowment to Board of Trustees to invest; endowment campaign; need for pianos; scholarship loans.

Principal Correspondents: P. J. Maveety; Mary McLeod Bethune; Corrine Peek; John L. Seaton.

0427 **Board of Trustees and Advisory Board Correspondence, "Louise L. Meigs," 1934–1941 and Undated.** 157 pp.

Major Topics: Fund-raising; audits; Bethune-Cookman singers; annual report of the president of BCC to the Board of Trustees (including statements on endowment campaign and finances); Women's Advisory Board; fire on BCC campus; proposal to change BCC to a four-year college for girls; banquet honoring Bethune; endowment fund statement; dismissals of men connected with BCC; repairs to buildings and equipment; BCC financial condition; Roland Hayes concert; visit of Eleanor Roosevelt to BCC; summer session; Bethune portrait; items made by BCC students; Board of Trustees meeting; reading prizes; Harrison Rhodes Memorial Library; Penn School, St. Helena Island, South Carolina.

Principal Correspondents: Mary McLeod Bethune; Ferris J. Meigs; Louise L. Meigs; Ernest Dyett; Florence L. Dyett; Elizabeth E. Wellington; Cynthia M. Ranslow.

0584 **Board of Trustees and Advisory Board Correspondence, "R," 1930–1944.** 269 pp.

Major Topics: Board of Trustees meetings and members; BCC financial condition; Harrison Rhodes Memorial Library; gifts and contributions; summer session with rural teachers; termite infestation of BCC buildings; thirtieth anniversary celebration; fund-raising; construction and dedication of BCC buildings; Bethune's appointment to NYA; Bethune-Cookman singers; Women's Advisory Board members; murder at BCC; summer session enrollment; music department; high school class trip to BCC; NYA programs in Illinois; purchase of library furniture; need to elect a successor to Bethune as president of BCC; tribute to A. Philip Randolph; loans to BCC.

Principal Correspondents: Mary McLeod Bethune; Margaret Rhodes; Cynthia M. Ranslow; G. D. Rogers; John D. Rockefeller III; Veva Rees Friend; Marcia Henry; Bertha L. Mitchell; Edward R. Rodriguez; James A. Colston.

Reel 3

Series 1: Board of Trustees and Advisory Board, 1925–1955 cont.

0002 **Board of Trustees and Advisory Board, General Correspondence, 1930–1946 and Undated.** 167 pp.

Major Topics: Recommendation of Bethune for achievement award; financial problems of BCC; request for Bethune to speak at Rollins College on race relations; Women's Advisory Board activities, meetings, and members; fund-raising; budget; gifts and contributions; description of Bethune's early work; Board of Trustees meetings and members; music and lecture series; enrollment; Bethune's report to Women's Advisory Board; thirtieth anniversary celebration; building projects and dedications; need for repairs and equipment; Harrison Rhodes Memorial Library; request for place settings made by students; lecture concert honoring Bethune's service to BCC; financial statement of the American Federation of Negro College Students.

Principal Correspondents: Mary McLeod Bethune; Will W. Alexander; Cynthia M. Ranslow; Louise L. Meigs; Stanley High; Frederick T. Keeney; Leila Livingston Morse; Roger N. Baldwin; Ada M. Lee; M. S. Davage; N. W. Collier; John Hope; Margaret Rhodes; Julia West Hamilton; William M. Cobb; Addie W. Dickerson; W. G. Marshall; Merrill J. Holmes; G. D. Rogers; Abram L. Simpson; Marcia Henry; Grace C. Damon; Walter F. White; James A. Colston; H. W. Bartley.

0169 **Board of Trustees and Advisory Board, General Correspondence, 1948–1955 and Undated.** 265 pp.

Major Topics: Women's Advisory Board members, activities, and reports; Harrison Rhodes Memorial Library; possible appearances of Marian Anderson and Joe Lewis; fund-raising; gifts and contributions; increased enrollment despite Korean War; increased faculty and benefits; establishment of ROTC unit; Roland Hayes and other concerts; military personnel in South Korea; Central Life Insurance Company; Mary McLeod Bethune Foundation; Marian Anderson concert; fiftieth anniversary celebration; United Negro College Fund; solicitations for pre-Christmas sale and luncheon; Bethune's death.

Principal Correspondents: Mary McLeod Bethune; Margaret Rhodes; Wilhelmina Amos; Collier E. Owens; Frances L. Gilliland; Ruby A. Brown; Richard V. Moore; Cara L. Fillebrown; Mary E. Davidson; Louise L. Meigs; Carrie Mae Stewart; Arlouine Tressler; Bertha L. Mitchell; Robert H. Johnson; Roger W. Babson; John R. Stanier; John W. Davis; T. J. Wetherell.

0434 **Board of Trustees and Advisory Board, Miscellaneous, 1943 and Undated.** 38 pp.

Major Topics: Fund-raising benefits honoring Bethune's work at BCC, attended by Eleanor Roosevelt and Roland Hayes; Women's Advisory Board members; Board of Trustees members.

Principal Correspondent: Mary McLeod Bethune.

- 0472 **Board of Trustees and Advisory Board, Reports and Minutes of Meetings, 1936–1949.** 121 pp.
Major Topics: General program of BCC; faculty; students; summer session; enrollment; graduate placement; accreditation; extracurricular activities; financial problems; Women's Advisory Board activities; fund-raising; gifts and contributions; Board of Trustees meetings and members; plan to transform BCC into a four-year college; Bethune's role and salary at BCC while serving in NYA; repairs to and expansion of BCC buildings; Women's Advisory Board by-laws; charter of Daytona Normal and Industrial Institute; modifications to BCC program during World War II; United Negro College Fund campaign; endowment campaign; resignation of James A. Colston; students taking advantage of Servicemen's Readjustment Act of 1944 (GI Bill).
Principal Correspondents: Mary McLeod Bethune; Cynthia M. Ranslow; Elizabeth E. Wellington; Bertha L. Mitchell; James A. Colston.
- 0593 **Board of Trustees and Advisory Board, Reports and Minutes of Meetings, 1950–1953.** 132 pp.
Major Topics: Board of Trustees meetings and members; endowment and building fund campaign; buildings and improvements; proposed administration of Hungerford School by BCC; proposal for ROTC at BCC; United Negro College Fund campaign; fund-raising; budget and financial condition; loans and grants to BCC; Women's Advisory Board activities; gifts and contributions; faculty and salaries; enrollment; scholarship program; academic program; extracurricular activities; plans for Eleanor Roosevelt to speak at founding of Mary McLeod Bethune Foundation.
Principal Correspondents: Elizabeth E. Wellington; J. W. E. Bowen; Lee Nichols; Richard V. Moore; Mary McLeod Bethune; Howard Thurman.
- 0725 **Board of Trustees, Reports and Minutes of Meetings, 1954–1955.** 163 pp.
Major Topics: Board of Trustees meetings and members; United Negro College Fund; financial condition of BCC; Mary McLeod Bethune Foundation; new buildings; Bethune retirement pay; Women's Advisory Board activities; Marian Anderson concert; recommendations by Southern Association of Colleges and Secondary Schools; faculty; enrollment; extracurricular activities; budget; study of athletic, music, salary, admissions, scholarship, curriculum, testing, library, and religious programs; recommendations by University Senate Survey Committee; faculty committees; administration and organization of BCC; by-laws of BCC; fiftieth anniversary celebration; college trustees.
Principal Correspondents: J. W. E. Bowen; Richard V. Moore; Lee Nichols; Mary McLeod Bethune; Elizabeth E. Wellington; Wilson Compton.

Reel 4

Series 2: Administration of Bethune-Cookman College, 1929–1960

- 0002 **Bethune-Cookman College, General Administration, 1929–1939.** 67 pp.
Major Topics: Twenty-fifth anniversary of BCC; proposed revision of BCC charter; fund-raising; Working Conference for Negro Teachers; food supplies; endowment campaign; summer session budget; poor reviews of BCC teachers by state of Florida; search for individual to carry out NYA project; enrollment; proposals to improve home economics department; teacher's claim for salary; suspension of Farm Security Administration supervisors for beating Alabama residents.
Principal Correspondents: Ada M. Lee; Mary McLeod Bethune; Abram L. Simpson; Walter F. White.
- 0069 **Bethune-Cookman College, General Administration, 1940.** 248 pp.
Major Topics: United Methodist Conference in Atlantic City, New Jersey (April 24–May 7, 1940); Methodist Church.
- 0317 **Bethune-Cookman College, General Administration, 1940–1943.** 127 pp.
Major Topics: Faculty and staff; need for additional drainage at BCC for farm production; Washington, D.C., fund-raiser honoring Bethune; prospective New York contributors; NYA.
Principal Correspondents: Mary McLeod Bethune; Frances P. Bolton; Mary Anderson; Paul V. McNutt; Katherine Biddle; William L. Dawson; Edwin M. Watson; Nelson A. Rockefeller; Mordecai W. Johnson; M. S. Davage; Lester B. Granger.
- 0444 **Bethune-Cookman College, General Administration, 1944–1945.** 194 pp.
Major Topics: Board of Trustees meetings and members; fund-raising; gifts and contributions; enrollment statistics; Women's Advisory Board activities; United Negro College Fund campaign; fortieth anniversary celebration; "New Farmerettes of America" convention; floor plans of Bethune's house; study of BCC by representatives of the Southern Association of Colleges and Secondary Schools; financial condition of BCC; concert sponsored by BCC Alumni Association of Washington, D.C.; Bethune's visit to military camp; participation in United Nations Conference on International Organization (San Francisco, California); search to fill dean of women position; building improvements.
Principal Correspondents: Mary McLeod Bethune; James A. Colston; Maxwell W. Saxon; Bertha L. Mitchell; Eloise Thompson.

Reel 5

Series 2: Administration of Bethune-Cookman College, 1929–1960 cont.

- 0002 **Bethune-Cookman College, General Administration, January–July 1946.** 213 pp.
Major Topics: Enrollment statistics; Bethune speaking engagements; plans for Bethune biography; social responsibility of communications media (radio) and Federal Communications Commission hearings; American Council on Race Relations; housing project for veterans; efficiency of BCC faculty and staff; condition of buildings; fund-raising; plan for expansion and improvements; National Citizens Political Action Committee; search for new BCC president; discrimination against minority veterans; National Emergency Conference on Minority Veterans Problems; Church of Christian Fellowship of Los Angeles; offer of employment to new business manager; vocational training equipment; budget of BCC Alumni Association; amnesty for African American conscientious objectors; gifts and contributions; correspondence of BCC business manager.
Principal Correspondents: Mary McLeod Bethune; Bertha L. Mitchell; C. B. Baldwin; Robert C. Weaver; Herbert M. Davidson; William H. Hale; Mordecai W. Johnson; Maxwell W. Saxon; Rebecca E. Davis; James C. Evans; M. S. Davage.
- 0215 **Bethune-Cookman College, General Administration, August–December 1946.** 164 pp.
Major Topics: Veterans Educational Facilities Program and acquisition of equipment by BCC; driver's education pamphlet for women; National Citizens Political Action Committee; housing project for veterans; buildings, furnishings, and equipment costs; gifts and contributions; All-State Recognition Day for Bethune-Cookman College; fund-raising; correspondence of business manager.
Principal Correspondents: Maxwell W. Saxon; M. S. Davage; Mary McLeod Bethune; C. B. Baldwin; James T. Burdine.
- 0379 **Bethune-Cookman College, General Administration, 1947.** 212 pp.
Major Topics: Acquisition of surplus government property by BCC; Progressive Citizens of America; rejuvenation of alumni association; endowment campaign; buildings and improvements; correspondence of business manager; summer session; United Negro College Fund campaign; information for prospective students; Veterans Educational Facilities Program; fund-raising; BCC President Richard V. Moore; Board of Trustees meeting; budget; faculty and staff; housing project for veterans; Veterans Administration staff reductions; BCC–Georgia State football game; inauguration of BCC President Richard V. Moore.
Principal Correspondents: Mary McLeod Bethune; Maxwell W. Saxon; Margaret Rhodes; Richard V. Moore; Bertha L. Mitchell; Eloise Thompson; Herbert M. Davidson; William H. Hale; M. S. Davage.

- 0591 **Bethune-Cookman College, General Administration, 1948.** 134 pp.
Major Topics: General Alumni Association of Bethune-Cookman College; Powell Lindsay's Negro Drama Group; inauguration of BCC President Richard V. Moore; fund-raising; gifts and contributions; mental illness of president of Wiley College and potential for lawsuits; rating of BCC; lists of alumni and summer session faculty; Veterans Administration staff reductions; baccalaureate services and graduation exercises; budget; William H. Gray; Veterans Administration vocational programs.
Principal Correspondents: Mary McLeod Bethune; Maxwell W. Saxon; G. D. Rogers; Mary L. Divers; Richard V. Moore; Herbert M. Davidson; Eloise Thompson; M. S. Davage; T. A. Adams; Helen Gahagan Douglas.
- 0725 **Bethune-Cookman College, General Administration, January–August 1949.** 193 pp.
Major Topics: Bethune-Volusia Beach; tribute to U.S. Representative William L. Dawson; prisoner's petition for clemency; BCC Appreciation Week, 1949; Bethune honored by Rollins College; BCC trust fund; residence hall dedication speech on democracy; Veterans Administration vocational programs; financial condition of BCC; fund-raising campaign; resignation of Florida A&M College president.
Principal Correspondents: G. D. Rogers; Mary McLeod Bethune; William H. Gray; Andrew O. Wittreich; Bertha L. Mitchell; Helen Gahagan Douglas; Jeanetta Eggleston; Frank Graham; Richard V. Moore; Robert L. Stephens.

Reel 6

Series 2: Administration of Bethune-Cookman College, 1929–1960 cont.

- 0002 **Bethune-Cookman College, General Administration, September–December 1949.** 176 pp.
Major Topics: Fund-raising (endowment) campaign chaired by Eleanor Roosevelt; Friends of Bethune-Cookman College; BCC history, aims, and statistics; BCC retrenchment and financial conservation plan; campaign to finance International Christian University in Japan; proposed radio broadcast by Bethune; BCC souvenir phonograph record; Bethune's trip to Haiti; BCC yearbook; biography of industrialist Henry J. Kaiser; United Negro College Fund.
Principal Correspondents: M. S. Davage; Mary McLeod Bethune; Robert L. Stephens; Bertha L. Mitchell; Ralph J. Bunche; Maxwell W. Saxon; Vera Davage; Henry A. Wallace; Herbert M. Davidson; Patricia D. Wideman; Earl Bunting.
- 0178 **Bethune-Cookman College, General Administration, January–March 1950.** 180 pp.
Major Topics: Fund-raising (endowment) campaign; convention of African Students Union; gifts and contributions; recommendation of Henry J. Richardson as Virgin Islands governor; General Alumni Association of Bethune-Cookman College; fund-raiser for business community of Daytona Beach; Bethune recommendation of James A. Colston.
Principal Correspondents: Mary McLeod Bethune; Richard V. Moore; Earl Bunting; Herbert H. Lehman; Robert L. Stephens; Maxwell W. Saxon; Edwin H. Butts; Harold B. Whitehurst; Julius Davidson; Edwin R. Embree; Jerona Wilson; Ada L. Williams; Lee Nichols.

- 0358 **Bethune-Cookman College, General Administration, April–December 1950.** 194 pp.
Major Topics: Fund-raising (endowment) campaign; gifts and contributions; Marian Anderson concert proposal; exclusion of African Americans from Jackson-Jefferson Day Dinner; tribute to Charles Houston, Charles Drew, and Carter Woodson; Bethune personal appearances; fiftieth anniversary celebration for Baptist pastor James H. Burks; poetry on Korean War, atomic bomb, communism, and socialism; Bethune-Volusia Beach; General Alumni Association of Bethune-Cookman College; work of BCC students with mentally impaired persons; Piney Woods Country Life School; BCC brochure; National Council of Churches of Christ; BCC building campaigns; need for building repairs.
Principal Correspondents: Mary McLeod Bethune; Richard V. Moore; Lee Nichols; Julius Davidson; R. Helen Wilson; John H. Sengstacke; Nelson A. Rockefeller; Forrester B. Washington; A. Philip Randolph.
- 0552 **Bethune-Cookman College, General Administration, January–June 1951.** 236 pp.
Major Topics: Bethune's need for personal funds; possible ROTC unit at BCC; fund-raising; gifts and contributions; Bethune scrapbook; BCC president Richard V. Moore; vocational guidance for high school graduates; BCC Glee Club and Band; request for Veterans Administration assistance for Albert Bethune Jr.; Bethune's role as president of Central Life Insurance Company; need for infirmary at BCC; visit of Vijaya Lakshmi Pandit, ambassador from India; United Negro College Fund campaign; BCC faculty and staff directory; NCNW; H. C. Bryant testimonial; Bethune speaking invitations; attacks on Bethune in the *Amsterdam News*; Bethune appointment to Advisory Council of Civil Defense; Federal Civil Defense Administration; Mary McLeod Bethune Scholarship at Walkers Commercial Vocational College; separate headquarters for African American division of Dade County Defense Council.
Principal Correspondents: Mary McLeod Bethune; Herbert H. Lehman; M. S. Davage; George L-P. Weaver; J. E. Walker; Richard V. Moore; Etta Moten; Alfred Baker Lewis; Arthur L. James; Ruth W. Waley; Julia Walker Brown; J. J. Wadsworth.
- 0788 **Bethune-Cookman College, General Administration, July–September 1951.** 134 pp.
Major Topics: Central Life Insurance Company; Bethune speaking invitations; "Mary McLeod Bethune Scholarship" at Walkers Commercial Vocational College; NCNW; Bethune resignation as consultant to Farmer's Home Administration; NAACP; Civil Defense and Citizenship conference at Florida Agricultural and Mechanical College; Rayford W. Logan; articles on African Americans in *Chicago Defender* and *Pittsburgh Courier*; Bethune-Volusia Beach; Bethune accident claim with National Airlines; literature for distribution in Haiti.
Principal Correspondents: J. E. Walker; Mary McLeod Bethune; Marian Anderson; Julia Walker Brown; Katharine Lenroot; Dillard B. Lasseter; J. J. Wadsworth; Walter F. White; Ruth W. Waley; Nelson M. Willis; Charles H. Wesley; Rayford W. Logan; Richard V. Moore; Daisy E. Lampkin; Anna Laura Lee.

- 0922 **Bethune-Cookman College, General Administration, October–December 1951.** 176 pp.
Major Topics: State of Florida Department of Education conference on housing; NCNW; Walter White on President's Committee on Civil Rights, integration of armed forces, employment, labor unions, and sports; Haitian opera *Ouanga*; civil defense campaign by Federal Civil Defense Administration to prepare for Soviet atomic attack; George Washington Carver birthplace; Bethune-Volusia Beach; transfer of hospital to Howard University; Bethune's plans to visit Liberia; fund-raising.
Principal Correspondents: Mary McLeod Bethune; D. E. Williams; Richard V. Moore; Walter F. White; Millard F. Caldwell; M. S. Davage.

Reel 7

Series 2: Administration of Bethune-Cookman College, 1929–1960 cont.

- 0002 **Bethune-Cookman College, General Administration, 1952.** 167 pp.
Major Topics: Mary McLeod Bethune medallion; New Homemakers of America convention at BCC; NCNW; 1952 Women's Leadership Conference; U.S. Supreme Court appeal involving Hungerford School; forty-eighth annual baccalaureate services and commencement exercises; tax regulations; *The Crisis* financial statement; national tennis championships at BCC; Mary McLeod Bethune Foundation; Women's Advisory Board; BCC Student Council; World Friendship Festival and Seminar, Salzburg, Austria; lawsuit by BCC business manager.
Principal Correspondents: Bertha L. Mitchell; Mary McLeod Bethune; Jessee M. Fears; Richard V. Moore; Thurgood Marshall; Hugo Black; Lester B. Granger; Thomas T. Cobb; W. J. Gardiner.
- 0169 **Bethune-Cookman College, General Administration, 1953.** 201 pp.
Major Topics: BCC Women's Senate; Bethune seventy-eighth birthday celebration; BCC charter; Mary McLeod Bethune Foundation; dinner honoring Bethune and Eleanor Roosevelt; Marian Anderson concert; Southern Association of Colleges and Secondary Schools recommendations for BCC; BCC guidance program; NAACP; CIO Political Action Committee; companies targeted for fund-raising; National Fund for Medical Education; baccalaureate services and commencement exercises; financial condition of Welricha Corporation; Barber-Scotia College.
Principal Correspondents: Mary McLeod Bethune; Charlotte L. Ford Clark; Frances L. Gilliland; Richard V. Moore; William E. Cotter; Julius Davidson; Maxwell W. Saxon; M. S. Davage; Dorothy Kenyon; Lou LuTour.

- 0370 **Bethune-Cookman College, General Administration, January–March 1954.** 276 pp.
Major Topics: Testimonial honoring Forrester B. Washington; racial discrimination towards high school students; Citizen’s Welfare League; Bethune speaking invitations; National Issues Committee; Gulfside Mission; Mary McLeod Bethune Scholarship; Mary McLeod Bethune Foundation; Hindman Settlement School; Afro-American Life Insurance Company; fiftieth anniversary of BCC; National Fund for Medical Education; Bethune travel and appearances; BCC tuition scholarships; admissions materials; fiftieth anniversary messages of congratulations; Mary McLeod Bethune Circle.
Principal Correspondents: Mary McLeod Bethune; Mary Celine; Maxwell W. Saxon; Frances P. Bolton; S. M. Brownell; Nelson A. Rockefeller; Richard V. Moore; Marie O. Cobb; Langston Hughes.
- 0646 **Bethune-Cookman College, General Administration, May–June 1954.** 67 pp.
Major Topics: *Brown v. Board of Education*; baccalaureate services and commencement exercises; possible grant for Cuban students; St. Philip’s College yearbook; Bethune trip to Switzerland.
Principal Correspondents: Mary McLeod Bethune; W. C. Handy; Richard V. Moore; S. Henry Grillo.
- 0713 **Bethune-Cookman College, General Administration, July–December 1954.** 141 pp.
Major Topics: Contributions to Mary McLeod Bethune Scholarship and to Mary McLeod Bethune Foundation; financial reports; Newark, New Jersey, Mary McLeod Bethune Circle; Harrison Rhodes Memorial Library; freshman orientation; Iowa Wesleyan College; United Negro College Fund; American Christian Palestine Committee and opposition to arms shipments to Arab states.
Principal Correspondents: Mary McLeod Bethune; Ralph W. Parsons; Richard V. Moore; Daisy Moore.
- 0854 **Bethune-Cookman College, General Administration, January–May 1955.** 194 pp.
Major Topics: Israel’s border and security problems; Kappa Alpha Psi fraternity; Philippa Schuyler concert; Bethune speaking invitation; future problem of rising population; improvement needs at BCC; “Mother of the Century” award to Bethune; theater and arts performances; Newark, New Jersey, Mary McLeod Bethune Circle; Religious Emphasis Week; Daytona Beach Appreciation Day for BCC; NCNW; tributes and expressions of sympathy upon the death of Bethune.
Principal Correspondents: Moshe Dayan; Mary McLeod Bethune; Daisy Moore; Richard V. Moore; Adam Clayton Powell Jr.; Frances P. Bolton.

Reel 8

Series 2: Administration of Bethune-Cookman College, 1929–1960 cont.

- 0002 **Bethune-Cookman College, General Administration, July–December 1955.** 57 pp.
Major Topics: Mail addressed to Bethune following her death; faculty guidelines; football program; student grades; Mary McLeod Bethune Foundation; plans for Bethune tributes; NCNW; faculty.
Principal Correspondents: Senorita W. Crawford; Paul L. Hyde; Edward R. Rodriguez.

- 0059 **Bethune-Cookman College, General Administration, 1956–1959.** 145 pp.
Major Topics: Mary McLeod Bethune Foundation; proposed Life Insurance Company of Florida; 1957 Bethune commemorations; contributions to United Negro College Fund and to Mary McLeod Bethune Memorial Scholarship; student recruitment; course outlines and tests; summer session faculty and calendar, 1957; student grades and suspensions; 1957 homecoming parade; faculty guidelines; prospective graduates, 1959.
Principal Correspondents: Edward R. Rodriguez; Richard V. Moore; G. D. Rogers; Richard V. Moore; Paul L. Hyde; John Sylvester Smith; Bertha L. Mitchell; Julius Davidson.
- 0204 **Bethune-Cookman College, General Administration, Undated.** 208 pp.
Major Topics: Citizens' Welfare League, Daytona Beach; Columbus Council for Democracy (Ohio); teachers; faculty and staff; praise for Bethune; BCC benefits attended by Eleanor Roosevelt; biography of Cynthia M. Ranslow; practical nurses training; Sunday Afternoon Community Meeting at BCC; Bethune support for 1949 New York City mayoral candidate Newbold Morris; Mary McLeod Bethune Foundation; Franklin D. Roosevelt Foundation; BCC brochures; audiovisual program; fund-raising; Edward L. Jones art exhibit; Frank Buchman and philosophy of "moral rearmament"; poems and prayers; "I'm Just Wild About Harry" (Truman song); awards for distinguished service; McLeod Hospital and Training School for Nurses.
Principal Correspondents: Mary McLeod Bethune; Anne Pierrepont Luquer; Harold L. Ickes.

**Series 3: Publications and Publicity Materials,
Bethune-Cookman College, 1895–1955**

- 0412 **Mary McLeod Bethune, Address Book, Undated.** 15 pp.
Principal Correspondent: Mary McLeod Bethune.
- 0427 **Mary McLeod Bethune, Radio Broadcast with Nancy Craig, 1949.** 157 pp.
Major Topics: Interview with Harold Russell; interview with Bethune; BCC; Bethune's life and work; radio commercials.
Principal Correspondents: Nancy Craig; Harold Russell; Ralph J. Bunche; Andrew G. Stewart; Mary McLeod Bethune.
- 0584 **Mary McLeod Bethune, Telephone Book, Undated.** 18 pp.
Principal Correspondent: Mary McLeod Bethune.
- 0602 **Bethune-Cookman College, Fund-raising, 1942–1948.** 131 pp.
Major Topics: Gifts and contributions; lecture concert with Eleanor Roosevelt and Roland Hayes; Channing H. Tobias elected director of Phelps-Stokes Fund; fund-raising survey and campaign.
Principal Correspondent: Mary McLeod Bethune.
- 0733 **Bethune-Cookman College, Fund-raising, April–September 1949.** 239 pp.
Major Topics: Gifts and contributions; Friends of Bethune-Cookman College budget and campaign chaired by Eleanor Roosevelt; publicity plan; American corporations and education of African Americans; Herbert Hoover's support of private philanthropy; Bethune biographical notes; Bethune support for 1949 New York City mayoral candidate Newbold Morris.
Principal Correspondents: Mary McLeod Bethune; Richard V. Moore; Robert L. Stephens; James Roosevelt; Earl Bunting; Ralph J. Bunche.

Reel 9

Series 3: Publications and Publicity Materials, Bethune-Cookman College, 1895–1955 cont.

- 0002 **Bethune-Cookman College, Fund-raising, September–December 1949.** 290 pp.
Major Topics: American corporations and education of African Americans; Friends of Bethune-Cookman College campaign chaired by Eleanor Roosevelt; Herbert Hoover's support of private philanthropy; Bethune support for 1949 New York City mayoral candidate Newbold Morris; publicity plans; African American education and aims of BCC; New York City campaign.
Principal Correspondents: Earl Bunting; Robert L. Stephens; Richard V. Moore; Mary McLeod Bethune; William H. A. Carr; Roland Hayes; Ralph J. Bunche.
- 0292 **Bethune-Cookman College, Fund-raising, January–March 1950.** 166 pp.
Major Topics: Gifts and contributions; Friends of Bethune-Cookman College campaign; Daytona Beach campaign.
Principal Correspondents: Mary McLeod Bethune; Margaret Rhodes; James Roosevelt; Maxwell W. Saxon; Robert L. Stephens; Julius Davidson; James E. Huger; Xenia H. Walker.
- 0458 **Bethune-Cookman College, Fund-raising, April–December 1950.** 126 pp.
Major Topics: Friends of Bethune-Cookman College campaign; gifts and contributions; Field Foundation report.
Principal Correspondents: Richard V. Moore; Robert L. Stephens; Mary McLeod Bethune.
- 0584 **Bethune-Cookman College, Fund-raising, Undated.** 157 pp.
Major Topics: Friends of Bethune-Cookman College campaign chaired by Eleanor Roosevelt; gifts and contributions; American corporations and education of African Americans; Herbert Hoover's support of private philanthropy; New York City and Florida campaigns.
Principal Correspondents: Mary McLeod Bethune; Earl Bunting; Julius Davidson.
- 0741 **Bethune-Cookman College, Fund-raising, 1951–1954.** 143 pp.
Major Topics: Friends of Bethune-Cookman College campaign; gifts and contributions; "Mine for a Day" campaign.
Principal Correspondent: Mary McLeod Bethune.
- 0884 **Bethune-Cookman College, Fund-raising Reports, 1949–1950.** 35 pp.
Major Topic: National fund-raising campaigns.
- 0919 **Bethune-Cookman College, Guest Book, 1947–1949.** 77 pp.

Reel 10

Series 3: Publications and Publicity Materials, Bethune-Cookman College, 1895–1955 cont.

- 0002 **Bethune-Cookman College, Guest Book, 1950–1952.** 44 pp.
- 0046 **Bethune-Cookman College, Mailing Lists, Donor's List, 1940–1942.** 15 pp.
Major Topic: Contributors.

- 0061 **Bethune-Cookman College, Mailing Lists, 1940–1954.** 88 pp.
Major Topics: NCNW; sponsors; contributors; Women United; Florida Medical, Dental and Pharmaceutical Association; American Christian Palestine Committee; Ebony Beauty School; BCC fiftieth anniversary; Mary McLeod Bethune Foundation; Orange Belt Teachers Association.
Principal Correspondent: Mary McLeod Bethune.
- 0149 **Bethune-Cookman College, Mailing Lists, 1948.** 101 pp.
Major Topics: Testimonial Dinner of 1948; national corporations; New York City African American attorneys and physicians; prospective Chicago contributors; New York City companies.
- 0250 **Bethune-Cookman College, Mailing Lists, 1949.** 183 pp.
Major Topics: Chicago workers; New York City residents and companies; national corporations; BCC fund-raising campaign; sponsors; United Negro College Fund; Friends of Bethune-Cookman College; New York City contributors; BCC Women's Committee; Testimonial Dinner of 1948.
- 0433 **Bethune-Cookman College, Mailing Lists, New York City, 1949 and Undated.** 147 pp.
Major Topics: Friends of Bethune-Cookman College; New York City contributors.
- 0580 **Bethune-Cookman College, Mailing Lists, 1951–1952.** 79 pp.
Major Topics: "Mine for a Day" campaign; newspapers and editors; advertising; New York State and general contributors; Pennsylvania Station, New York, porters; West African American Trading Company; businessmen and women; National Negro Insurance Association; BCC faculty and staff.
- 0659 **Bethune-Cookman College, Mailing Lists, 1952.** 220 pp.
Major Topics: Newspapers and editors; contributors; African American ministers; Democratic Party women members; African American organizations in Maryland; NCNW; Delta Sigma Theta sorority, Beta Sigma chapter; Young Men's Christian Association; NAACP; New York contributors; prospective California contributors; Young Women's Christian Association; Bethune Dinner sponsors; NYA; Friends of Bethune-Cookman College; BCC fund-raising campaign; Bethune address book; Central Florida Symphony Orchestra; Women's Advisory Board members; "Mine for a Day" campaign.
- 0879 **Bethune-Cookman College, Mailing Lists, Cards Received, [1955].** 155 pp.
Major Topic: Cards, messages, and flowers received the year of Bethune's death.

Reel 11

Series 3: Publications and Publicity Materials, Bethune-Cookman College, 1895–1955 cont.

- 0002 **Bethune-Cookman College, Mailing Lists, Undated.** 274 pp.
Major Topics: Contributors; United Negro College Fund; presidents of historically black colleges and universities in Florida; Women's Advisory Board; Board of Trustees members; fund-raising campaign; New York and California contributors; Chicago workers and prospective Chicago contributors; Bethune-Cookman Committee.
- 0276 **Bethune-Cookman College, Mailing Lists, Alumni, Undated.** 10 pp.
Major Topics: Alumni; 1947 four-year graduates.

- 0286 **Bethune-Cookman College, Mailing Lists, Newspapers, Undated.** 3 pp.
Major Topic: Daily and weekly newspaper lists.
- 0289 **Bethune-Cookman College, National Sponsoring Committee, 1949.** 129 pp.
Major Topics: Solicitation for sponsors for fund-raising campaign; use of *Ebony* photographs of Bethune for campaign; Eleanor Roosevelt as committee chairman; campaign plan.
Principal Correspondents: Mary McLeod Bethune; Millard F. Caldwell; Pearl S. Buck; Alfred Baker Lewis; Channing H. Tobias; Philip Murray; John H. Sengstacke; Fuller Warren; William L. Dawson; William Green; Richard V. Moore; Charles G. Muller; Adam Clayton Powell Jr.; Nelson A. Rockefeller; Frances P. Bolton; Harold L. Ickes; Newbold Morris; Lester B. Granger; Earl Bunting; Arthur B. Spingarn; Louise L. Meigs.
- 0418 **Bethune-Cookman College, Publications and Publicity Materials, 1895–1954 and Undated.** 311 pp.
Major Topics: 1895 Cookman Institute commencement; Daytona-Cookman Collegiate Institute; articles on Bethune and Southeastern Federation of Colored Women’s Clubs in *Southeastern Herald*; McLeod Hospital and Training School for Nurses; Daytona Normal and Industrial Institute; Citizens National Committee for BCC; Founder’s Day celebrations; B-C [Bethune-Cookman] Book; BCC brochures; information for prospective students; *The Advocate* (BCC newspaper); freshman class program, 1950; “Big Chum” program, 1953; fiftieth anniversary celebration; baccalaureate services and commencement exercises, 1954; Camilla Williams concert; BCC history and philosophy; student handbook.
- 0729 **Bethune-Cookman College, Public Relations, General, 1946–1952.** 108 pp.
Major Topics: All-State Recognition Day; publicity for BCC; 1948 commencement calendar; request for literature by Mary McLeod Bethune Circle; Bethune speaking engagements; request for historical data on BCC; Bethune-Cookman singers in New York; proposed *Newsweek* and *Reader’s Digest* articles on Bethune; error in *New York Age*; American corporations and education of African Americans; Herbert Hoover’s support of private philanthropy; NCNW convention; fund-raising; gifts and contributions; possibility of securing proceeds from federally owned offshore oil for African American colleges.
Principal Correspondents: Mary McLeod Bethune; Ernest E. Johnson; Richard V. Moore; Eloise Thompson; Bertha L. Mitchell; Maxwell W. Saxon; William H. A. Carr; Constance E. H. Daniel; Harold L. Ickes.
- 0837 **Bethune-Cookman College, Public Relations, General, Undated.** 201 pp.
Major Topics: Presentations on African American education and BCC made to International Ladies’ Garment Workers Union, Sidney Hillman Foundation, International Brotherhood of Sleeping Car Porters, and Amalgamated Clothing Workers of America; fund-raising campaign chaired by Eleanor Roosevelt; “Foundation for a Dream” brochure.
Principal Correspondent: Mary McLeod Bethune.

Reel 12

Series 3: Publications and Publicity Materials, Bethune-Cookman College, 1895–1955 cont.

- 0002 **Bethune-Cookman College, Public Relations, Mary McLeod Bethune Circles, 1947–1955.** 96 pp.

Major Topics: Gifts and contributions; BCC choral ensemble presentations; organization of new circles; activities and meetings; Central Life Insurance Company.

Principal Correspondents: Mary McLeod Bethune; Bertha L. Mitchell; Ada M. Lee; Pearl S. Cotton; Onria King.

- 0098 **Bethune-Cookman College and Mary McLeod Bethune, Speeches and Writings, 1941–1955 and Undated.** 60 pp.

Major Topics: *Reader's Digest* article; Bethune passport; "Chronicles of Black Courage" (*Ebony* article); "What Does the Negro Want?" (Bethune writing); biographical sketch; "Facing New Frontiers: The Story of Mary Bethune" (play); Bethune support for 1949 New York City mayoral candidate Newbold Morris.

Series 4: Daytona Normal and Industrial Institute, Student Accounts, 1921

- 0159 **Daytona Normal and Industrial Institute, Receipt Book—Tuition and Board, 1921.** 46 pp.

Series 5: Financial Records of Mary McLeod Bethune, the Daytona Normal and Industrial Institute and Bethune-Cookman College, 1920–1955

- 0206 **Mary McLeod Bethune, Cancelled Checks, 1920–1926.** 156 pp.
0362 **Mary McLeod Bethune, Cancelled Checks, 1926–1927.** 173 pp.
0535 **Mary McLeod Bethune, Cancelled Checks, 1939, 1943–1944.** 72 pp.
0607 **Mary McLeod Bethune, Cancelled Checks, 1945–1946.** 36 pp.
0643 **Mary McLeod Bethune, Cash Book, 1929–1931.** 92 pp.
0735 **Mary McLeod Bethune, Check Stubs, 1943–1944.** 69 pp.
0804 **Mary McLeod Bethune, Receipts, 1921–1935.** 69 pp.
0873 **Mary McLeod Bethune, Receipts, 1936–1950.** 96 pp.

Reel 13

Series 5: Financial Records of Mary McLeod Bethune, the Daytona Normal and Industrial Institute and Bethune-Cookman College, 1920–1955 cont.

- 0001 **Bethune-Cookman College, Expenses, 1949–1950.** 62 pp.
Major Topic: Robert L. Stephens and Mary McLeod Bethune expense accounts.
- 0063 **Bethune-Cookman College, Financial Records [1949–1950].** 17 pp.
Major Topics: Campaign fund account; Seymour N. Siegel special account; budget (November 14, 1949–March 25, 1950).
- 0080 **Bethune-Cookman College, Financial Reports, 1954–1955.** 160 pp.
Major Topic: Budget (1953–1954, 1954–1955).
Principal Correspondents: Paul L. Hyde; Richard V. Moore.

- 0240 **Bethune-Cookman College, Vouchers, August–November 1949.** 105 pp.
Major Topics: Friends of Bethune-Cookman College; expenses of Robert L. Stephens and Bethune.
- 0345 **Bethune-Cookman College, Vouchers, November–December 1949.** 105 pp.
Major Topics: Friends of Bethune-Cookman College; expenses of Robert L. Stephens.
Principal Correspondent: Xenia H. Walker.
- 0450 **Bethune-Cookman College, Zanders Notes for 2nd Street Property, 1925–1926.** 30 pp.
Major Topic: Checks payable to Alphonzo Zanders from Bethune.
- 0480 **Friends of Bethune-Cookman College, Petty Cash Reports, 1949– 1950.** 59 pp.
- 0539 **Welricha Corporation, 1951– 1958.** 134 pp.
Major Topics: Articles of incorporation, by-laws, and minutes of meetings; Welricha Motel at Bethune-Volusia Beach.

Series 6: Records of the Mary McLeod Bethune Foundation, 1952–1962
Subseries 1: General, 1952–1959

- 0674 **Mary McLeod Bethune Foundation, Articles of Incorporation, By-laws and Correspondence Regarding the Establishment of the Mary McLeod Bethune Foundation, 1952–1953.** 54 pp.
Principal Correspondents: Charles W. Flint; Mary McLeod Bethune; Paul W. Harvey.
- 0728 **Mary McLeod Bethune Foundation, Board of Trustees and Advisory Committee, 1952–1954.** 183 pp.
Major Topics: Meetings of Board of Trustees; officers of Mary McLeod Bethune Foundation; meetings of Board of Trustees and Advisory Committee; annual report for 1953, including annual financial statement.
Principal Correspondents: Bertha L. Mitchell; Mary McLeod Bethune; Paul W. Harvey; Maxwell W. Saxon; Roger N. Baldwin.

Reel 14

Series 6: Records of the Mary McLeod Bethune Foundation, 1952–1962 cont.
Subseries 1: General, 1952–1959 cont.

- 0002 **Mary McLeod Bethune Foundation, Board of Trustees and Advisory Committee, 1955.** 184 pp.
Major Topics: Mary McLeod Bethune Foundation meetings; foundation publicity; Board of Trustees and Advisory Committee members; death of Bethune and continuation of foundation work; foundation budget.
Principal Correspondents: Bertha L. Mitchell; Mary McLeod Bethune; Julius Davidson; Maxwell W. Saxon; F. D. Patterson; Edward R. Rodriguez.
- 0186 **Mary McLeod Bethune Foundation, Board of Trustees and Advisory Committee, 1956–1959.** 66 pp.
Major Topics: Mary McLeod Bethune Foundation annual meeting; annual report from March 1956 to March 1957; foundation projects; proposed merger of BCC and foundation trustees.
Principal Correspondents: Edward R. Rodriguez; Bertha L. Mitchell; Julius Davidson; Thomas T. Cobb.

- 0252 **Mary McLeod Bethune Foundation, Correspondence, 1952.** 91 pp.
Major Topic: Establishment of foundation.
Principal Correspondents: Mary McLeod Bethune; John H. Sengstacke; Elizabeth B. Cowles; Paul W. Harvey; Julius Davidson; Marshall Field; Hazel T. Wilson.
- 0343 **Mary McLeod Bethune Foundation, Correspondence, 1953.** 264 pp.
Major Topics: Establishment of foundation; gifts and contributions; fund-raising.
Principal Correspondents: Mary McLeod Bethune; Hubert T. Delany; Margaret Sanger; Walter F. White; Ruth A. Scott; Elizabeth B. Cowles; John H. Sengstacke; Hazel T. Wilson; Samuel A. Boyea; Langston Hughes; Roger W. Babson; Julius Davidson; Robert D. Hobday; Edwin O. Grover; Paul W. Harvey.
- 0607 **Mary McLeod Bethune Foundation, Correspondence, 1954.** 244 pp.
Major Topics: Gifts and contributions; employment of secretary; scholarships; Bethune seventy-ninth birthday celebration; fund-raising; income tax exemption; Danielsen Fund.
Principal Correspondents: Mary McLeod Bethune; Arthur L. James; Senorita W. Crawford; Nelson A. Rockefeller; F. D. Patterson; Richard V. Moore; Bertha L. Mitchell; Julius Davidson; Leila Livingston Morse; Roger W. Babson.

Reel 15

Series 6: Records of the Mary McLeod Bethune Foundation, 1952–1962 cont.

Subseries 1: General, 1952–1959 cont.

- 0002 **Mary McLeod Bethune Foundation, Correspondence, January–May 1955.** 281 pp.
Major Topics: Fund-raising; gifts and contributions; income tax exemption; second anniversary foundation dinner; United Beauty School Owners and Teachers Association; Alpha Chi Pi Omega contributions; messages regarding Bethune's death; Mary McLeod Bethune Scholarship Fund; plans for religious meditation program.
Principal Correspondents: Julius Davidson; Senorita W. Crawford; Mary McLeod Bethune; Paul W. Harvey; Bertha L. Mitchell; Roger W. Babson; Nelson A. Rockefeller; Albert V. Danielsen; Maxwell W. Saxon; Marjorie Stewart Joyner; Margaret Sanger; Ada M. Lee; Sue Thurman.
- 0283 **Mary McLeod Bethune Foundation, Correspondence, June–December 1955.** 132 pp.
Major Topics: Gifts and contributions; Nominating Committee; inventory of articles following Bethune's death; Housekeeping and Maintenance Committee; estimate of dining room repairs; insurance policies; Alpha Chi Pi Omega; United Beauty School Owners and Teachers Association; Founder's Day, 1955; Finance Committee; high school class visit.
Principal Correspondents: Bertha L. Mitchell; Harry M. Griffin; Roger W. Babson; Veva Rees Friend; Maxwell W. Saxon; Senorita W. Crawford; Julius Davidson; Richard V. Moore; Leila Livingston Morse; George W. Engram; John H. Sengstacke; Albert V. Danielsen; Virginia Bethune; Hazel T. Wilson; Edward R. Rodriguez; Paul L. Hyde.

- 0415 **Mary McLeod Bethune Foundation, Miscellaneous, Undated.** 77 pp.
Major Topics: Bethune Finance Campaign itinerary; Housekeeping and Maintenance Committee rules; potential sponsors and contributors; United Negro College Fund contributions; foundation purposes; articles of incorporation; foundation and life membership brochures.
Principal Correspondents: Bertha L. Mitchell; Nelson A. Rockefeller.
- 0492 **Mary McLeod Bethune Foundation, Reports and Minutes of Meetings, 1953–1959 and Undated.** 159 pp.
Major Topics: Budget and financial statements; operations and activities; Nominating Committee; Board of Trustees; foundation director and staff; Liaison Committee; Bethune memorial service arrangements; Committee for Boys' Club Project; Youth Center Committee; West Side Youth Center Bethune memorial.
Principal Correspondents: Harry M. Griffin; Bertha L. Mitchell; Edward R. Rodriguez; Maxwell W. Saxon; Richard V. Moore; Ada Zeiger; Julius Davidson; George W. Engram.

Series 6: Records of the Mary McLeod Bethune Foundation, 1952–1962 cont.
Subseries 2: Edward R. Rodriguez Files, 1954–1962

- 0653 **Mary McLeod Bethune Foundation, Edward R. Rodriguez Files, General Correspondence, 1955.** 114 pp.
Major Topic: Appointment of Edward R. Rodriguez as director.
Principal Correspondents: Edward R. Rodriguez; Julius Davidson; Maxwell W. Saxon; Richard V. Moore; Albert M. Bethune; Eleanor Roosevelt; Veva Rees Friend; Roger W. Babson.
- 0767 **Mary McLeod Bethune Foundation, Edward R. Rodriguez Files, General Correspondence, January–March 1956.** 157 pp.
Major Topics: Proposed chapel; Boston University's Danielsen House dedication; proposed visit to George Washington Carver Foundation; high school class visits; Bethune-Volusia Beach, Inc.; fund-raising; gifts and contributions; joint dinner meeting with BCC trustees; Alpha Chi Pi Omega contributions; foundation activities.
Principal Correspondents: Edward R. Rodriguez; Albert V. Danielsen; Eleanor Roosevelt; Bertha L. Mitchell; Julius Davidson; Marjorie Stewart Joyner; Paul L. Hyde; Roger W. Babson; Ralph J. Bunche; Richard V. Moore.

Reel 16

Series 6: Records of the Mary McLeod Bethune Foundation, 1952–1962 cont.
Subseries 2: Edward R. Rodriguez Files, 1954–1962 cont.

- 0002 **Mary McLeod Bethune Foundation, Edward R. Rodriguez Files, General Correspondence, April–May 1956.** 185 pp.
Major Topics: Protection of Bethune grave; fund-raising; Alpha Chi Pi Omega contributions; gifts and contributions; high school class visit; Bethune memorial service; joint dinner meeting with BCC trustees; commencement exercises.
Principal Correspondents: Edward R. Rodriguez; Julius Davidson; Paul L. Hyde; Marjorie Stewart Joyner; Estes Kefauver; John Sylvester Smith.

- 0187 **Mary McLeod Bethune Foundation, Edward R. Rodriguez Files, General Correspondence, June–July 1956.** 179 pp.
Major Topics: Fund-raising; gifts and contributions; director's salary; Bethune memorial services; 1956 BCC summer session; Mary McLeod Bethune Memorial Scholarship Award; Alpha Chi Pi Omega contributions; proposed visit to Franklin Delano Roosevelt Foundation; American Association for the United Nations.
Principal Correspondents: Edward R. Rodriguez; Julius Davidson; Richard V. Moore; Hazel T. Wilson; George W. Engram; John Sylvester Smith; Ada M. Lee; Bertha L. Mitchell.
- 0366 **Mary McLeod Bethune Foundation, Edward R. Rodriguez Files, General Correspondence, August–September 1956.** 126 pp.
Major Topics: Improvements to foundation site and termite treatment; gifts and contributions; tax exemption; Housekeeping and Maintenance Committee; Founder's Day, 1956.
Principal Correspondents: Edward R. Rodriguez; Julius Davidson; Harry M. Griffin; Marjorie Stewart Joyner; James Roosevelt; Albert V. Danielsen; Channing H. Tobias; F. D. Patterson.
- 0492 **Mary McLeod Bethune Foundation, Edward R. Rodriguez Files, General Correspondence, November–December 1956.** 78 pp.
Major Topics: Improvements to foundation site; Morehouse College; NCNW Interracial Conference of Women; gifts and contributions; tax exemption.
Principal Correspondents: Edward R. Rodriguez; Paul L. Hyde; John R. Stanier; Ada M. Lee; Marjorie Stewart Joyner.
- 0570 **Mary McLeod Bethune Foundation, Edward R. Rodriguez Files, General Correspondence, January–April 1957.** 178 pp.
Major Topics: Gifts and contributions; traveling exhibition of Bethune artifacts; Alpha Chi Pi Omega contributions; resignation of Julius Davidson as chairman; reduction of staff.
Principal Correspondents: Edward R. Rodriguez; Marjorie Stewart Joyner; Albert M. Bethune; Emma Gelders Sterne; Paul L. Hyde; Julius Davidson; Albert V. Danielsen.
- 0748 **Mary McLeod Bethune Foundation, Edward R. Rodriguez Files, General Correspondence, May–December 1957.** 135 pp.
Major Topics: Traveling exhibition of Bethune artifacts; gifts and contributions; reduction of staff; dedication of Bethune Plaza apartment building; Alpha Chi Pi Omega contributions; Bethune memorial services; Founder's Day, 1957.
Principal Correspondents: Edward R. Rodriguez; Richard V. Moore; Paul L. Hyde.

Reel 17

Series 6: Records of the Mary McLeod Bethune Foundation, 1952–1962 cont.

Subseries 2: Edward R. Rodriguez Files, 1954–1962 cont.

- 0002 **Mary McLeod Bethune Foundation, Edward R. Rodriguez Files, General Correspondence, 1958.** 181 pp.
Major Topics: Gifts and contributions; proposed merger of BCC and foundation trustees; Alpha Chi Pi Omega contributions; financial report; foundation activities; Bethune memorial services; improvements to foundation site.
Principal Correspondents: Edward R. Rodriguez; Paul L. Hyde; Richard V. Moore.
- 0183 **Mary McLeod Bethune Foundation, Edward R. Rodriguez Files, General Correspondence, 1959–1960 and Undated.** 159 pp.
Major Topics: Gifts and contributions; improvements to foundation site; Alpha Chi Pi Omega contributions; Bethune memorial services; cash receipts.
Principal Correspondents: Edward R. Rodriguez; Paul L. Hyde; Julius Davidson; Richard V. Moore; Bertha L. Mitchell; Thomas T. Cobb.
- 0342 **Edward R. Rodriguez Files, Estate of Mary McLeod Bethune, 1954–1962 and Undated.** 114 pp.
Principal Correspondent: Edward R. Rodriguez.
- 0456 **Edward R. Rodriguez Files, Tax Returns, 1952–1958.** 86 pp.
Principal Correspondent: Edward R. Rodriguez.

Series 6: Records of the Mary McLeod Bethune Foundation, 1952–1962 cont.

Subseries 3: Financial Records, 1952–1961 cont.

- 0543 **Mary McLeod Bethune Foundation, Banking Records, Deposit Slips, 1954–1957.** 92 pp.
- 0635 **Mary McLeod Bethune Foundation, Bank Statements, 1952–1955.** 114 pp.
Principal Correspondent: Bertha L. Mitchell.
- 0749 **Mary McLeod Bethune Foundation, Bank Statements, 1956–1957.** 246 pp.
Principal Correspondent: Bertha L. Mitchell.

Reel 18

Series 6: Records of the Mary McLeod Bethune Foundation, 1952–1962 cont.

Subseries 3: Financial Records, 1952–1961 cont.

- 0002 **Mary McLeod Bethune Foundation, Bank Statements, 1958.** 204 pp.
- 0206 **Mary McLeod Bethune Foundation, Bank Statements, 1959.** 166 pp.
- 0372 **Mary McLeod Bethune Foundation, Cash Receipts, Reports, 1953–1957.** 134 pp.
- 0506 **Mary McLeod Bethune Foundation, Cash Receipts and Disbursements, 1952–1956.** 113 pp.
- 0619 **Mary McLeod Bethune Foundation, Cash Receipts and Disbursements, 1956–1960.** 131 pp.
- 0750 **Mary McLeod Bethune Foundation, Disbursement Vouchers, 1952–1954.** 68 pp.
- 0818 **Mary McLeod Bethune Foundation, Disbursement Vouchers, 1954–1956.** 246 pp.

Reel 19

Series 6: Records of the Mary McLeod Bethune Foundation, 1952–1962 cont.
Subseries 3: Financial Records, 1952–1961 cont.

- 0002 **Mary McLeod Bethune Foundation, Disbursement Vouchers, 1957–1958.** 148 pp.
0150 **Mary McLeod Bethune Foundation, General Journal, 1953–1960.** 30 pp.
Major Topic: Foundation finances.
0180 **Mary McLeod Bethune Foundation, General Ledgers, 1952–1957.** 93 pp.
0273 **Mary McLeod Bethune Foundation, General Ledgers, 1957–1960.** 133 pp.
0406 **Mary McLeod Bethune Foundation, Miscellaneous, 1954–1956 and Undated.** 24 pp.
0430 **Mary McLeod Bethune Foundation, Paid Bills, 1953–1955.** 261 pp.
0691 **Mary McLeod Bethune Foundation, Paid Bills, 1955–1956.** 158 pp.
0849 **Mary McLeod Bethune Foundation, Paid Bills, 1957–1960.** 192 pp.
Principal Correspondent: Edward R. Rodriguez.

Reel 20

Series 6: Records of the Mary McLeod Bethune Foundation, 1952–1962 cont.
Subseries 3: Financial Records, 1952–1961 cont.

- 0002 **Mary McLeod Bethune Foundation, Payroll Taxes, 1952–1959.** 114 pp.
Major Topics: Quarterly federal tax returns; unemployment compensation status.

Series 7: Oversize Files, 1917–1959

- 0117 **Bethune Cookman College, Board of Trustees and Advisory Board, 1927–1951.** 194 pp.
Major Topics: Building repairs and improvements; endowment campaign; Board of Trustees meetings and members; twenty-fifth anniversary of BCC; Women's Advisory Board activities and members; legality of employing white faculty member and threats of violence; endorsements of BCC; Selective Service discrimination against conscientious objectors; derogatory statement by trustee regarding failing students; financial situation; committee reports.
Principal Correspondents: Mary McLeod Bethune; Cynthia M. Ranslow; Margaret Rhodes; Louise L. Meigs.
0311 **Daytona Educational and Industrial Institute, Registration Book, 1917.** 20 pp.
0331 **Daytona Normal and Industrial Institute, Charter, 1925.** 13 pp.
0344 **Bethune-Cookman College, General Administration, 1925–1951.** 122 pp.
Major Topics: Constitution and by-laws of Florida State Association Improved Benevolent Protective Order of Elks of the World; receipts and expenditures of *National Notes* (periodical); NYA address on youth movements; NCNW convention; faculty and staff; gifts and contributions; sorority contributions; American Council on Race Relations; transfer of Hungerford School to Orange County Board of Education; Afro-American Youth International Rotary Club; NCNW Philadelphia Council; Bethune address to Central Life Insurance Company.
Principal Correspondent: Mary McLeod Bethune.

- 0466 **Bethune-Cookman College, General Administration, 1952.** 170 pp.
Major Topics: Sorority contributions; legality of establishing banking institution at BCC; United Beauty School Owners and Teachers Association; Women's Leadership Conference; BCC budget and financial condition; National Association of Negro Business and Professional Women's Clubs; Alpha Chi Pi Omega convention.
Principal Correspondents: Mary McLeod Bethune; Marjorie Stewart Joyner; Edith S. Sampson.
- 0636 **Bethune-Cookman College, General Administration, 1953–1959 and Undated.** 119 pp.
Major Topics: Alpha Chi Pi Omega contributions; United Beauty School Owners and Teachers Association; Alpha Chi Pi Omega convention; commencement exercises of St. Benedict's Preparatory School, New Jersey; National Fund for Medical Education; National Issues Committee; McCarthyism in Florida; Bethune address at South Street Elementary School dedication; plan to establish Mary McLeod Bethune Tribute Commission; American Teachers Association; conference list; NCNW, Brooklyn Council; Afro-American Youth International Rotary Club; Bethune-Volusia Beach.
Principal Correspondent: Mary McLeod Bethune.
- 0755 **Bethune-Cookman College, General Administration, Reports, 1947–1950 and Undated.** 121 pp.
Major Topics: Accreditation; general program of BCC; faculty and staff; summer sessions; enrollment; housing; extracurricular activities; Harrison Rhodes Memorial Library; housing project for veterans; repairs and improvements; BCC financial condition; United Negro College Fund; inauguration of Richard V. Moore as president; fund-raising; effect of Veterans Administration staff reduction on African Americans; policies and practices for women students; Board of Trustees meetings; Bethune seventy-fifth birthday celebration expenses.
Principal Correspondent: Richard V. Moore.
- 0876 **Bethune-Cookman College, Fund-raising, 1949–1952.** 86 pp.
Major Topics: Bethune seventy-fourth birthday celebration; birthday campaign; publicity; gifts and contributions; contributors; Board of Trustees members; sponsors.
Principal Correspondents: Mary McLeod Bethune; Charles A. Anger; Xenia H. Walker.

Reel 21

Series 7: Oversize Files, 1917–1959 cont.

- 0002 **Bethune-Cookman College, Fund-raising Reports, 1949–1950.** 108 pp.
Major Topics: Campaign fund account (bank book); Friends of Bethune-Cookman College fund-raising campaign; publicity.
Principal Correspondent: Seymour N. Siegel.
- 0110 **Bethune-Cookman College, Fund-raising, Friends of Bethune-Cookman College, Vouchers, 1949–1950 and Undated.** 145 pp.
Major Topics: Friends of Bethune-Cookman College; expenses of Robert L. Stephens and E. D. Tuthill; support of campaign chairman Eleanor Roosevelt; printing and communications expenses.
Principal Correspondents: Xenia H. Walker; Eleanor Roosevelt.

- 0255 **Bethune-Cookman College, Mailing Lists, 1949–1952.** 82 pp.
Major Topics: Contributors; Testimonial Dinner of 1948; Board of Trustees members; sponsors; Daytona Beach businesses, physicians, and attorneys; Friends of Bethune-Cookman College; BCC fund-raising campaign.
- 0337 **Bethune-Cookman College, Publications, Publicity Materials and Writings, 1928–1954 and Undated.** 70 pp.
Major Topics: Baccalaureate services and commencement exercises; *The Advocate* (BCC newspaper); BCC thirty-fifth anniversary; housing project for veterans; concerts; BCC fiftieth anniversary; BCC history and brochures; charter of Daytona-Cookman Collegiate Institute.
Principal Correspondents: Mary McLeod Bethune; Paul L. Hyde; Ilma Murray James; Mildred E. Jones.
- 0407 **Daytona Educational and Industrial Institute, Student Accounts, 1916–1918.** 225 pp.
- 0632 **Daytona Educational and Industrial Institute, Student Accounts, 1918.** 51 pp.
- 0683 **Mary McLeod Bethune Foundation, Articles of Incorporation, By-laws and Dedication, 1953.** 32 pp.
Principal Correspondents: Paul W. Harvey; Mary McLeod Bethune.
- 0715 **Mary McLeod Bethune Foundation, Correspondence, 1952–1957 and Undated.** 71 pp.
Major Topics: Establishment and dedication of foundation; dinner honoring Bethune and Eleanor Roosevelt; gifts and contributions; travel expenses for Ontario, Canada, trip; birthday campaign; proposal to merge foundation with BCC; sponsors.
Principal Correspondents: Mary McLeod Bethune; M. S. Davage; Marjorie Stewart Joyner; Senorita Crawford; Mabel Carney; Edward R. Rodriguez.
- 0786 **Mary McLeod Bethune Foundation, Mailing Lists, 1955 and Undated.** 58 pp.
Major Topics: Florida ministers; BCC Board of Trustees members; beauticians; Foundation Advisory Committee; BCC Women’s Advisory Board; Florida officials; Citizens Welfare League.
- 0844 **Mary McLeod Bethune Foundation, Mailing Lists, Alabama–Michigan, Undated.** 107 pp.

Reel 22

Series 7: Oversize Files, 1917–1959 cont.

- 0002 **Mary McLeod Bethune Foundation, Mailing Lists, Minnesota–Virginia and International.** 102 pp.
- 0104 **Mary McLeod Bethune Foundation, Receipt Books, 1957–1959.** 52 pp.
- 0156 **Oversize Files, Newspaper Clippings and Blueprints, 1800, 1929–1956, and Undated.** 70 pp.
Major Topics: BCC; Eleanor Roosevelt visit to BCC; “The Negro and the Social Graces” (address); Bethune address at BCC; *The Advocate* (BCC newspaper); Camilla Williams concert; Charlotte Hawkins Brown and Palmer Memorial Institute; *The Bethunia*; inauguration of BCC President Richard V. Moore; establishment of Mary McLeod Bethune Foundation; Ralph J. Bunche address at BCC; floor plans of Bethune’s house.
Principal Correspondent: Charlotte Hawkins Brown.

REEL INDEX to Supplement to Part 4

The following is a listing of the folders comprising *Mary McLeod Bethune Papers: The Bethune Foundation Collection, Supplement to Part 4: Administration of Bethune-Cookman College, 1924–1946*. The four-digit number on the far left is the frame at which a particular file folder begins. This is followed by the file title, the date(s) of the file, and the total number of pages. Substantive issues are highlighted under the heading *Major Topics*, as are prominent correspondents under the heading *Principal Correspondents*.

Supplement Reel 1

Frame No.

Series 1: General Correspondence, 1915–1945

- 0001 **Bethune, General Correspondence, 1915, 1923, 1924.** 7 pp.
Major Topic: National Urban League.
Principal Correspondents: Mary McLeod Bethune; Eugene Kinckle Jones.
- 0008 **Bethune, General Correspondence, 1925.** 18 pp.
Major Topics: General Education Board; Daytona-Cookman Collegiate Institute.
Principal Correspondents: Mary McLeod Bethune; Jackson Davis; E. C. Sage; Leo M. Favrot.
- 0026 **Bethune, General Correspondence, 1926.** 9 pp.
Major Topics: General Education Board; change of name from Daytona-Cookman Collegiate Institute to Bethune-Cookman College; BCC Board of Trustees meetings; BCC financial condition.
Principal Correspondents: Mary McLeod Bethune; E. C. Sage; Jackson Davis.
- 0035 **Bethune, General Correspondence, 1927.** 12 pp.
Major Topics: General Education Board; teacher training; music instructor.
Principal Correspondents: Mary McLeod Bethune; Leo M. Favrot; Jackson Davis; Josie W. Roberts.
- 0047 **Bethune, General Correspondence, 1928.** 44 pp.
Major Topics: General Education Board; BCC Board of Trustees meeting; music instructors; McLeod Hospital and Training School for Nurses; summer school.
Principal Correspondents: Mary McLeod Bethune; Josie W. Roberts; Jackson Davis; Leo M. Favrot.

- 0091 **Bethune, General Correspondence, 1929.** 68 pp.
Major Topics: BCC twenty-fifth anniversary; Board of Trustees meeting; Bethune-Cookman clubs; General Education Board; music instructor; National Association of Teachers in Colored Schools.
Principal Correspondents: Perry B. James Jr.; Mary McLeod Bethune; Josie W. Roberts; William S. Bovard; Leo M. Favrot; Jackson Davis; Bertha L. Mitchell.
- 0159 **Bethune, General Correspondence, January–June 1931.** 38 pp.
Major Topics: Music instructors; library; Board of Education of the Methodist Episcopal Church; General Education Board.
Principal Correspondents: Mary McLeod Bethune; Josie W. Roberts; Jackson Davis; Henry M. L. James.
- 0197 **Bethune, General Correspondence, July–December 1931.** 55 pp.
Major Topics: Music instructors; travel; repairs at BCC; student loan fund of Methodist Episcopal Church; music trend among African American students; General Education Board; Langston Hughes day at BCC; urgent need for students; library.
Principal Correspondents: Mary McLeod Bethune; Josie W. Roberts; Henry M. L. James; Bertha L. Mitchell; Wilhelm A. Sykes; Langston Hughes; Jackson Davis; W. W. Brierley.
- 0252 **Bethune, General Correspondence, January–June 1932.** 36 pp.
Major Topics: Adult education at BCC; music instructors; library; visit by Congressman Oscar DePriest; General Education Board; library and science department improvements.
Principal Correspondents: Mary McLeod Bethune; Josie W. Roberts; Henry M. L. James; W. W. Brierley; Leo M. Favrot; Henry F. Coleman; Wilhelm A. Sykes.
- 0288 **Bethune, General Correspondence, July–December 1932.** 52 pp.
Major Topics: General Education Board; music instructors; library; faculty and staff; BCC promotion in Chicago.
Principal Correspondents: Mary McLeod Bethune; W. W. Brierley; Wilhelm A. Sykes; Margaret M. Johnson; Leo M. Favrot; Bertha L. Mitchell.
- 0340 **Bethune, General Correspondence, January–March 1933.** 35 pp.
Major Topics: BCC promotion in Chicago; faculty and staff; library; General Education Board; Bethune-Cookman singers; music instructor.
Principal Correspondents: Mary McLeod Bethune; Josie W. Roberts; Margaret M. Johnson; W. W. Brierley; Wilhelm A. Sykes.
- 0375 **Bethune, General Correspondence, April–June 1933.** 47 pp.
Major Topics: Faculty and staff; music instructor; General Education Board.
Principal Correspondents: Mary McLeod Bethune; Wilhelm A. Sykes; Fletcher M. Morton; W. W. Brierley; Ernest Dyett; Henry M. L. James; Josie W. Roberts.
- 0422 **Bethune, General Correspondence, July–December 1933.** 35 pp.
Major Topics: Music instructor; General Education Board; faculty and staff; repairs.
Principal Correspondents: Mary McLeod Bethune; Josie W. Roberts; Leo M. Favrot; Ernest Dyett; Fletcher M. Morton; Kenneth D. Days; W. W. Brierley; Bertha L. Mitchell; Henry F. Coleman.

- 0457 **Bethune, General Correspondence, January–June 1934.** 50 pp.
Major Topics: BCC thirtieth anniversary; gifts and contributions; music instructor; Bethune-Cookman singers; faculty and staff; General Education Board.
Principal Correspondents: Mary McLeod Bethune; W. W. Brierley; Henry F. Coleman; Wilhelm A. Sykes; Josie W. Roberts; Kenneth D. Days.
- 0507 **Bethune, General Correspondence, July–December 1934.** 35 pp.
Major Topics: General Education Board; faculty and staff; gifts and contributions.
Principal Correspondents: Mary McLeod Bethune; Herbert M. Fillebrown; Fletcher M. Morton; Margaret M. Johnson; Henry F. Coleman; Kenneth D. Days; Henry M. L. James; Bertha L. Mitchell; Wilhelm A. Sykes.
- 0542 **Bethune, General Correspondence, January–March 1935.** 55 pp.
Major Topics: Faculty and staff; gifts and contributions; fund-raising; building dedications.
Principal Correspondents: Mary McLeod Bethune; Ernest Dyett; Channing H. Tobias.
- 0597 **Bethune, General Correspondence, April–June 1935.** 85 pp.
Major Topics: National Association of Colored Women; fund-raising; gifts and contributions; student accounts; faculty and staff; prospective students; Bethune awarded Spingarn Medal.
Principal Correspondent: Mary McLeod Bethune.
- 0682 **Bethune, General Correspondence, July–September 1935.** 97 pp.
Major Topics: Faculty and staff; gifts and contributions; Bethune awarded Spingarn Medal; prospective students; student aid from NYA.
Principal Correspondents: Mary McLeod Bethune; Ernest Dyett; Henry M. L. James; Henry F. Coleman; Wilhelm A. Sykes; Kenneth D. Days; Fletcher M. Morton; Herbert M. Fillebrown; Mamie G. Hoffman.
- 0779 **Bethune, General Correspondence, October–December 1935.** 83 pp.
Major Topics: Student aid from NYA; gifts and contributions; faculty and staff; *The Advocate* (BCC newspaper); Hungerford School concert; music instructor; inability to pay teacher salaries.
Principal Correspondents: Mary McLeod Bethune; Bernard Milton Jones; Henry F. Coleman; Mordecai W. Johnson; Wilhelm A. Sykes; Henry M. L. James; Fletcher M. Morton.
- 0862 **Bethune, General Correspondence, January–March 1936.** 90 pp.
Major Topics: Gifts and contributions; faculty and staff; inability to pay teacher salaries; Bethune-Cookman Student Loan Fund; student accounts; fund-raising; student aid from NYA; prospective students.
Principal Correspondents: Mary McLeod Bethune; Henry M. L. James; Wilhelm A. Sykes; Henry F. Coleman; Fletcher M. Morton; Merrill J. Holmes; Bertha L. Mitchell; Margaret Rhodes.
- 0952 **Bethune, General Correspondence, April–June 1936.** 66 pp.
Major Topics: Gifts and contributions; faculty and staff; recruitment of graduates by Afro-American Life Insurance Company; BCC graduate at music school.
Principal Correspondents: Mary McLeod Bethune; Wilhelm A. Sykes; Margaret Rhodes; Irma M. Allen; Mamie G. Hoffman; F. M. Turrentine.

Supplement Reel 2

Series 1: General Correspondence, 1915–1945 cont.

- 0001 **Bethune, General Correspondence, July–September 1936.** 78 pp.
Major Topics: Bethune appointment to the NYA; prospective students; gifts and contributions; faculty and staff; student aid from NYA; publicity; student accounts; library.
Principal Correspondents: Mary McLeod Bethune; Warren R. Cochrane; Bertha L. Mitchell.
- 0079 **Bethune, General Correspondence, October–December 1936.** 124 pp.
Major Topics: Library; BCC graduate at music school; prospective students; student aid from NYA.
Principal Correspondents: Mary McLeod Bethune; Henry F. Coleman; Bertha L. Mitchell; Irma M. Allen; F. M. Turrentine; James A. Bond.
- 0203 **Bethune, General Correspondence, January–February 1937.** 91 pp.
Major Topics: Prospective students; student aid from NYA; student accounts; fund-raising; faculty and staff; gifts and contributions; Bethune-Cookman singers.
Principal Correspondents: Mary McLeod Bethune; Bertha L. Mitchell.
- 0294 **Bethune, General Correspondence, March–April 1937.** 67 pp.
Major Topics: Gifts and contributions; prospective students; faculty and staff; Bethune-Cookman singers; student accounts; fund-raising.
Principal Correspondents: Mary McLeod Bethune; Bertha L. Mitchell; Ernest Dyett.
- 0361 **Bethune, General Correspondence, May–June 1937.** 95 pp.
Major Topics: Student accounts; gifts and contributions; prospective students; student aid from NYA; fund-raising; Bethune-Cookman singers.
Principal Correspondents: Mary McLeod Bethune; Bertha L. Mitchell.
- 0456 **Bethune, General Correspondence, July–September 1937.** 105 pp.
Major Topics: Student accounts; gifts and contributions; faculty and staff; student aid from NYA; prospective students.
Principal Correspondents: Mary McLeod Bethune; Bertha L. Mitchell.
- 0561 **Bethune, General Correspondence, October–December 1937.** 49 pp.
Major Topics: Gifts and contributions; prospective students; student aid from NYA; student accounts.
Principal Correspondents: Bertha L. Mitchell; Mary McLeod Bethune.
- 0610 **Bethune, General Correspondence, 1938.** 17 pp.
Major Topics: Student accounts; funds for training African American social workers; gifts and contributions; BCC financial condition; Bethune-Cookman singers.
Principal Correspondents: G. D. Rogers; Mary McLeod Bethune; Bertha L. Mitchell.
- 0627 **Bethune, General Correspondence, 1939.** 31 pp.
Major Topics: Gifts and contributions; National Urban League; faculty and staff; *The Advocate* (BCC newspaper); plan for Bethune visit to Tampa.
Principal Correspondents: Mary McLeod Bethune; Florence L. Dyett; Bertha L. Mitchell; S. P. Rutledge; Margaret Rhodes; G. Blythe Andrews.

- 0658 **Bethune, General Correspondence, 1940–1945.** 19 pp.
Major Topics: Faculty and staff; gifts and contributions; prospective students; student aid from NYA; Hungerford School; student accounts.
Principal Correspondents: James A. Bond; Mary McLeod Bethune; James A. Colston.
- 0677 **Bethune, General Correspondence, Undated and Incomplete.** 19 pp.
Major Topics: Student aid from NYA; faculty and staff; Bethune travels.
Principal Correspondents: Mary McLeod Bethune; Josie W. Roberts; Bertha L. Mitchell.
- Series 2: Correspondence with the Board of Education of the Methodist Episcopal Church, 1927–1946**
- 0696 **Getzendanner, May/Board of Education, Methodist Episcopal Church, 1928–1939.** 17 pp.
Major Topics: BCC financial reports; possibility of transferring management of BCC to Board of Trustees.
Principal Correspondents: May Getzendanner; Mary McLeod Bethune; Bertha L. Mitchell.
- 0713 **Merrill J. Holmes/Board of Education, Methodist Episcopal Church, 1927–June 1929.** 41 pp.
Major Topics: BCC tuition plan; insurance policy favoring Bethune; distribution of scholarship funds; Board of Education appropriations for BCC; faculty and staff; fund-raising; BCC charter.
Principal Correspondents: Mary McLeod Bethune; Merrill J. Holmes; William S. Bovard.
- 0754 **Merrill J. Holmes/Board of Education, Methodist Episcopal Church, July–December 1929.** 34 pp.
Major Topics: Church relations with African American colleges; procurement of educational equipment from Walden School; publicity and photographs of BCC; scholarship funds; Board of Education and General Education board appropriations for BCC; fund-raising; music instructors.
Principal Correspondents: Merrill J. Holmes; Mary McLeod Bethune.
- 0788 **Merrill J. Holmes/Board of Education, Methodist Episcopal Church, January–June 1930.** 36 pp.
Major Topics: Publicity; fund-raising; scholarship funds; General Education Board appropriations for BCC; Board of Education disapproval of employment of Bethune relative at BCC; amendment of BCC charter; rating of BCC; Board of Trustees meeting and member; meeting of college presidents; procurement of educational equipment from Walden School.
Principal Correspondents: Mary McLeod Bethune; Merrill J. Holmes.
- 0824 **Merrill J. Holmes/Board of Education, Methodist Episcopal Church, July–December 1930.** 8 pp.
Major Topics: Faculty and staff; publicity; Bethune salary.
Principal Correspondents: Mary McLeod Bethune; Merrill J. Holmes.
- 0832 **Merrill J. Holmes/Board of Education, Methodist Episcopal Church, 1931.** 23 pp.
Major Topics: Faculty and staff; enrollment; publicity; library; BCC budget; Board of Education and General Education Board appropriations for BCC; gifts and contributions.
Principal Correspondents: Mary McLeod Bethune; Merrill J. Holmes.

- 0855 **Merrill J. Holmes/Board of Education, Methodist Episcopal Church, 1932.** 54 pp.
Major Topics: Rating of BCC; Board of Education appropriations for BCC; voluntary reduction of faculty/staff salaries at African American colleges; gifts and contributions; financial condition of BCC; General Education Board appropriations for BCC; dean and business manager positions; BCC teacher training program; BCC budget; loan from BCC building fund.
Principal Correspondents: Mary McLeod Bethune; Merrill J. Holmes.
- 0909 **Merrill J. Holmes/Board of Education, Methodist Episcopal Church, 1933.** 68 pp.
Major Topics: Voluntary reduction of staff salaries at the Board of Education and at African American colleges; BCC budget; General Education Board appropriations for BCC; travel expenses of Bethune-Cookman singers; investing of endowment funds; financial condition of BCC; gifts and contributions; collection of student fees.
Principal Correspondents: Mary McLeod Bethune; Merrill J. Holmes.
- 0977 **Merrill J. Holmes/Board of Education, Methodist Episcopal Church, January–June 1935.** 37 pp.
Major Topics: Fund-raising; food preparation in college dining halls; gifts and contributions; BCC indebtedness to contractors; financial condition of BCC.
Principal Correspondents: Mary McLeod Bethune; Merrill J. Holmes.

Supplement Reel 3

Series 2: Correspondence with the Board of Education of the Methodist Episcopal Church, 1927–1946 cont.

- 0001 **Merrill J. Holmes/Board of Education, Methodist Episcopal Church, July–December 1935.** 58 pp.
Major Topics: Board of Education appropriations to BCC; BCC land donated to Volusia County; financial condition of BCC and application for bank loan; collection of student fees; gifts and contributions; fund-raising; General Education Board appropriations for BCC.
Principal Correspondents: Mary McLeod Bethune; Merrill J. Holmes.
- 0059 **Merrill J. Holmes/Board of Education, Methodist Episcopal Church, 1937.** 30 pp.
Major Topics: Bethune decision to relinquish administration of either BCC or NYA; question of extending BCC beyond a two-year program; National Negro Youth Congress; gifts and contributions; fund-raising; National Methodist Student conference; Board of Education appropriations for BCC.
Principal Correspondents: Mary McLeod Bethune; Merrill J. Holmes.
- 0089 **Merrill J. Holmes/Board of Education, Methodist Episcopal Church, 1938–1939.** 58 pp.
Major Topics: Board of Education appropriations for BCC; gifts and contributions; BCC budget; Board of Education disapproval of employment of Bethune relative at BCC; repairs; African Americans in the Methodist Church; insurance claim regarding fire in McLeod Hall; proposed transfer of property from Board of Education to BCC Board of Trustees; proposal to change BCC to a four-year college for girls; publicity plan.
Principal Correspondents: Abram L. Simpson; Merrill J. Holmes; Mary McLeod Bethune.

- 0147 **Merrill J. Holmes/Board of Education, Methodist Episcopal Church, 1927–1928.** 35 pp.
Major Topics: BCC endowment campaign; tuition; proposed building program; life insurance policy on Bethune; faculty and staff; BCC financial conditions.
Principal Correspondents: Mary McLeod Bethune; Merrill J. Holmes.
- 0182 **Merrill J. Holmes/Board of Education, Methodist Episcopal Church, 1929–1930.** 41 pp.
Major Topics: BCC executive secretary; endowment campaign; launching of expansion program for BCC twenty-fifth anniversary; faculty and staff; procurement of school equipment; BCC administration.
Principal Correspondents: Mary McLeod Bethune; Merrill J. Holmes.
- 0223 **Merrill J. Holmes/Board of Education, Methodist Episcopal Church, 1931.** 40 pp.
Major Topics: Summer school for teachers; BCC Board of Trustees members; BCC financial condition; Board of Education and General Education Board appropriations for BCC; fund-raising; gifts and contributions.
Principal Correspondents: Mary McLeod Bethune; Merrill J. Holmes.
- 0263 **Merrill J. Holmes/Board of Education, Methodist Episcopal Church, 1932.** 46 pp.
Major Topics: Rating of BCC; BCC financial condition; gifts and contributions; General Education Board appropriations for BCC; dean and bursar position at BCC; need for repairs; life insurance policy on Bethune.
Principal Correspondents: Mary McLeod Bethune; Merrill J. Holmes.
- 0309 **Merrill J. Holmes/Board of Education, Methodist Episcopal Church, 1933–1935.** 52 pp.
Major Topics: BCC financial condition; faculty and staff; reduction in teacher salaries; General Education Board and Board of Education appropriations for BCC; need for repairs; gifts and contributions; Bethune travels.
Principal Correspondents: Mary McLeod Bethune; Merrill J. Holmes.
- 0361 **Merrill J. Holmes/Board of Education, Methodist Episcopal Church, 1936–1937.** 45 pp.
Major Topics: BCC land donated to Volusia County; faculty and staff; gifts and contributions; Board of Education appropriations for BCC; need for repairs; endowment campaign; BCC financial condition.
Principal Correspondents: Mary McLeod Bethune; Merrill J. Holmes.
- 0406 **Merrill J. Holmes/Board of Education, Methodist Episcopal Church, 1938–1940.** 37 pp.
Major Topics: Faculty and staff; endowment campaign; Board of Education appropriations for BCC; need for repairs.
Principal Correspondents: Mary McLeod Bethune; Merrill J. Holmes; Bertha L. Mitchell.
- 0443 **Board of Education, Methodist Episcopal Church (General), 1929–1946.** 60 pp.
Major Topics: Faculty and staff; Board of Education survey of educational institutions; student loan fund of the Methodist Episcopal Church; student accounts; loan recommendations for students; gifts and contributions; Board of Education appropriations to BCC; contributions of small colleges to war effort; public relations program for Methodist institutions; war bonds.
Principal Correspondents: Mary McLeod Bethune; William S. Bovard; Boyd M. McKeon; Harry Wright McPherson; James A. Colston; M. S. Davage; R. Ira Barnett.
- 0503 **Board of Education, Methodist Episcopal Church (General), 1928–1936.** 17 pp.
Major Topics: Need for repairs; gifts and contributions; storm and fire damage.
Principal Correspondents: Mary McLeod Bethune; H. K. Wright.
- 0520 **Board of Education, Methodist Episcopal Church, Loan Payments, 1931–1932.** 9 pp.
Major Topic: Agreements to repay loans to the Board of Education.

Series 3: Letters to Donors, 1928–1943

- 0530 **Letters to Donors, October 1928.** 103 pp.
Major Topic: Red Cross storm damage relief for African Americans in Florida.
Principal Correspondent: Mary McLeod Bethune.
- 0633 **Letters to Donors, November–December 1928.** 69 pp.
Major Topic: Red Cross storm damage relief for African Americans in Florida.
Principal Correspondent: Mary McLeod Bethune.
- 0702 **Letters to Donors, 1935.** 39 pp.
Major Topics: Gifts and contributions to BCC; publicity tour by Bethune and the Bethune-Cookman singers.
Principal Correspondents: Mary McLeod Bethune; Bertha L. Mitchell.
- 0741 **Letters to Donors, January–March 1939.** 49 pp.
Major Topic: Gifts and contributions to BCC.
Principal Correspondent: Mary McLeod Bethune.
- 0790 **Letters to Donors, April–September 1939.** 37 pp.
Major Topic: Gifts and contributions to BCC.
Principal Correspondent: Mary McLeod Bethune.
- 0827 **Letters to Donors, October–December 1939.** 34 pp.
Major Topic: Gifts and contributions to BCC.
Principal Correspondent: Mary McLeod Bethune.
- 0861 **Letters to Donors, 1940.** 21 pp.
Major Topic: Gifts and contributions to BCC.
Principal Correspondent: Mary McLeod Bethune.
- 0882 **Contributions/Letters from Donors, 1935–1943 and Undated.** 13 pp.
Major Topic: Gifts and contributions to BCC.
Principal Correspondent: Mary McLeod Bethune.
- 0895 **Fund Raising Reports, Undated.** 5 pp.
Major Topics: Fund-raising; gifts and contributions.

Series 4: Miscellaneous Files, 1927–1944

- 0901 **Junior College Graduates, 1927–1928.** 3 pp.
Major Topic: Names of BCC graduates.
- 0904 **Colston, James, General Correspondence, 1944.** 38 pp.
Major Topics: Death of Women's Advisory Board member Cynthia M. Ranslow; fund-raising for scholarships; BCC fortieth anniversary celebration.
Principal Correspondent: James A. Colston.
- 0942 **Scott, Mazie T., [Loan] Office, 1931–1932.** 38 pp.
Major Topics: Student loans; student loan fund of Methodist Episcopal Church.
Principal Correspondents: Mazie T. Scott; Joseph P. MacMillan; Marjorie Rutledge; B. C. Daughtry; E. J. Bailey; Pearl Montgomery; Nathaniel Rutledge.

Frame No.

- 0980 **Documents [regarding] Relationship of Board of Education of the Methodist Episcopal Church with Bethune-Cookman College, 1923–1933.** 27 pp.
Major Topics: Change of name to Bethune-Cookman College; scholarships; endowment campaign; financial reports; faculty and staff; Board of Education survey of educational institutions; publicity and photographs of BCC; Bethune salary.
Principal Correspondents: Mary McLeod Bethune; May Getzendanner; Merrill J. Holmes.
- 1007 **Office of the President/Anonymous Memos on College Affairs, Undated.** 21 pp.
Major Topics: Curriculum; purpose of BCC; religion.

PRINCIPAL CORRESPONDENTS INDEX

The following index is a guide to the major correspondents in both Part 4 and Supplement to Part 4 of the *Mary McLeod Bethune Papers: The Bethune Foundation Collection*. The first number after each entry refers to the reel, while the four-digit number following the colon refers to the frame number at which a particular file folder containing correspondence by the person begins. Hence, 3: 0002 directs the researcher to the folder that begins at Frame 0002 of Reel 3. Materials from the Supplement to Part 4 are identified by SUP preceding the reel number. Hence, SUP 1: 0001 refers to the folder that begins at Reel 1, Frame 0001, of the Supplement to Part 4. By referring to the Reel Index, which constitutes the initial section of this guide, the researcher will find the folder title, inclusive dates, and a list of Major Topics and Principal Correspondents, arranged in the order in which they appear on the film.

Adams, T. A.

1: 0116; 5: 0591

Alexander, Will W.

1: 0116; 3: 0002

Allen, Clara A. W.

1: 0116

Allen, Irma M.

SUP 1: 0952; SUP 2: 0079

Amos, Wilhelmina

3: 0169

Anderson, Marian

6: 0788

Anderson, Mary

4: 0317

Andrews, G. Blythe

SUP 2: 0627

Anger, Charles A.

20: 0876

Babson, Roger W.

3: 0169; 14: 0343, 0607; 15: 0002, 0283,
0653, 0767

Bailey, E. J.

SUP 3: 0942

Baldwin, C. B.

5: 0002-0215

Baldwin, Roger N.

1: 0467; 3: 0002; 13: 0728

Ball, Louise C.

1: 0164

Barnett, R. Ira

1: 0164; SUP 3: 0443

Bartley, H. W.

1: 0164; 3: 0002

Beatty, Sarah H.

1: 0164

Bethune, Albert M.

1: 0164, 0467; 15: 0653; 16: 0570

Bethune, Mary McLeod

1: 0002-0704; 2: 0002-0584; 3: 0002-0725;
4: 0002, 0317-0444; 5: 0002-0725;
6: 0002-0922; 7: 0002-0854; 8: 0204-
0733; 9: 0002-0741; 10: 0061; 11: 0289,
0729-0837; 12: 0002; 13: 0674-0728;
14: 0002, 0252-0607; 15: 0002;
20: 0117, 0344-0636, 0876; 21: 0337,
0683-0715; SUP 1: 0001-0952;
SUP 2: 0001-0977; SUP 3: 0001-0503,
0530-0882, 0980

Biddle, Katherine

4: 0317

Black, Hugo

7: 0002

Bolton, Frances P.

4: 0317; 7: 0370, 0854; 11: 0289

Bond, James A.
SUP 2: 0079, 0658

Bovard, William S.
SUP 1: 0091; SUP 2: 0713; SUP 3: 0443

Bowen, J. W. E.
1: 0051; 3: 0593-0725

Boyea, Samuel A.
14: 0343

Brierley, W. W.
SUP 1: 0197-0457

Brown, Charlotte Hawkins
22: 0156

Brown, Julia Walker
6: 0552-0788

Brown, Ruby A.
3: 0169

Brownell, S. M.
7: 0370

Brummitt, Stella W.
1: 0164

Brush, Anna L.
1: 0164-0244

Buck, Pearl S.
11: 0289

Bunche, Ralph J.
6: 0002; 8: 0427, 0733; 9: 0002; 15: 0767

Bunting, Earl
6: 0002-0178; 8: 0733; 9: 0002, 0584;
11: 0289

Burdine, James T.
5: 0215

Butts, Edwin H.
6: 0178

Butts, Eileen H.
1: 0002, 0164

Caldwell, Millard F.
6: 0922; 11: 0289

Campbell, Lucie E.
1: 0244

Cannon, M. Jones
1: 0244

Carney, Mabel
1: 0244; 21: 0715

Carr, William H. A.
9: 0002; 11: 0729

Celine, Mary
7: 0370

Clark, Charlotte L. Ford
7: 0169

Cobb, Marie O.
7: 0370

Cobb, Thomas T.
1: 0244; 7: 0002; 14: 0186; 17: 0183

Cobb, William M.
1: 0244; 3: 0002

Cochrane, Warren R.
SUP 2: 0001

Coleman, Henry F.
SUP 1: 0252, 0422-0507, 0682-0862;
SUP 2: 0079

Collier, N. W.
1: 0244; 3: 0002

Colston, James A.
1: 0116-0317, 0452-0570, 0704, 2: 0002,
0584; 3: 0002, 0472; 4: 0444;
SUP 2: 0658; SUP 3: 0443, 0904

Colyer, Emma J.
1: 0244

Compton, Wilson
3: 0725

Conger, H. G.
1: 0244

Cotter, William E.
7: 0169

Cotton, Pearl S.
12: 0002

Cowles, Elizabeth B.
14: 0252, 0343

Craig, Nancy
8: 0427

Crawford, Senorita W.
8: 0002; 14: 0607; 15: 0002-0283; 21: 0715

Damon, Grace C.
3: 0002

Daniel, Constance E. H.
11: 0729

Danielsen, Albert V.
15: 0002, 0283, 0767; 16: 0366, 0570

Daughtry, B. C.
SUP 3: 0942

Davage, M. S.
1: 0317; 3: 0002; 4: 0317; 5: 0002-0379,
0591; 6: 0002, 0552, 0922; 7: 0169;
21: 0715; SUP 3: 0443

Davage, Vera
6: 0002

Davidson, Herbert M.
1: 0317; 5: 0002, 0379-0591; 6: 0002

Davidson, Julius
6: 0178-0358; 7: 0169; 8: 0059, 0292;
9: 0584; 14: 0002-0607; 15: 0002-0283,
0492-0767; 16: 0002-0366, 0570;
17: 0183

Davidson, Mary E.
1: 0317; 3: 0169

Davis, Amelia
1: 0317

Davis, Jackson
SUP 1: 0008-0197

Davis, John W.
3: 0169

Davis, Rebecca E.
5: 0002

Dawson, William L.
4: 0317; 11: 0289

Dayan, Moshe
7: 0854

Days, Kenneth D.
SUP 1: 0422-0507, 0682

Delany, Hubert T.
1: 0317; 14: 0343

Dickerson, Addie W.
1: 0317; 3: 0002

Dickerson, G. Edward
1: 0317

Divers, Mary L.
5: 0591

Douglas, Helen Gahagan
5: 0591-0725

Douglas, Melvyn
1: 0002

Dyett, Ernest
2: 0427; SUP 1: 0375-0422, 0542, 0682;
SUP 2: 0294

Dyett, Florence L.
2: 0427; SUP 2: 0627

Eggleston, Jeanetta
5: 0725

Embree, Edwin R.
6: 0178

Ingram, George W.
15: 0283, 0492; 16: 0187

Evans, James C.
5: 0002

Favrot, Leo M.
SUP 1: 0008, 0035-0091, 0252-0288, 0422

Fears, Jesse M.
7: 0002

Field, Marshall
14: 0252

Fillebrown, Cara L.
3: 0169

Fillebrown, Herbert M.
1: 0398; SUP 1: 0507, 0682

Filondon, Gertrude W.
1: 0398

Fish, Bert
1: 0398

Flint, Charles W.
1: 0398; 13: 0674

Friend, Veva Rees
1: 0398; 2: 0584; 15: 0283, 0653

Gardiner, W. J.
7: 0002

Getzendanner, May
1: 0452; SUP 2: 0696; SUP 3: 0980

Gilliland, Frances L.
3: 0169; 7: 0169

Graham, E. A.
1: 0452

Graham, Frank
5: 0725

Granger, Lester B.
4: 0317; 7: 0002; 11: 0289

Gray, William H.
5: 0725

Green, William
11: 0289

Griffin, Harry M.
15: 0283, 0492; 16: 0366

Grillo, S. Henry
7: 0646

Grover, Edwin O.
14: 0343

Hale, William H.
5: 0002, 0379

Hamilton, Julia West
3: 0002

Hammond, John
1: 0467

Handy, W. C.
 7: 0646
Harkness, Elizabeth V.
 1: 0467
Harley, Enos C.
 1: 0467
Harvey, Paul W.
 13: 0674-0728; 14: 0252, 0343; 15: 0002;
 21: 0683
Hawkins, Mae Reese
 1: 0467
Hayes, Roland
 9: 0002
Henry, Marcia
 1: 0467; 2: 0584; 3: 0002
High, Stanley
 1: 0467; 3: 0002
Hobday, Robert D.
 14: 0343
Hoffman, Mamie G.
 SUP 1: 0682, 0952
Holmes, Merrill J.
 1: 0467; 3: 0002; SUP 1: 0862;
 SUP 2: 0713-0977; SUP 3: 0001-0406,
 0980
Hope, John
 3: 0002
Horrace, Laura E.
 1: 0467
Huger, James E.
 9: 0292
Hughes, Langston
 7: 0370; 14: 0343; SUP 1: 0197
Hughes, W. A. C.
 1: 0467
Hunt, Florence J.
 1: 0467
Hyde, Paul L.
 8: 0002-0059; 13: 0080; 15: 0283, 0767;
 16: 0002, 0492-0748; 17: 0002, 0183;
 21: 0337
Ickes, Harold L.
 8: 0204; 11: 0289, 0729
James, Arthur L.
 6: 0552; 14: 0607
James, Henry M. L.
 SUP 1: 0159-0252, 0375, 0507, 0682-0862
James, Ilma Murray
 21: 0337
James, Joseph H.
 1: 0570
James, Perry B., Jr.
 1: 0570; SUP 1: 0091
Johnson, Charles S.
 1: 0570
Johnson, Ernest E.
 11: 0729
Johnson, Margaret M.
 SUP 1: 0288-0340, 0507
Johnson, Mordecai W.
 4: 0317; 5: 0002; SUP 1: 0779
Johnson, Robert H.
 3: 0169
Jones, Bernard Milton
 SUP 1: 0779
Jones, Eugene Kinckle
 SUP 1: 0001
Jones, Libbie H.
 1: 0570
Jones, Mildred E.
 21: 0337
Jones, Thomas E.
 1: 0570
Joyner, Marjorie Stewart
 15: 0002, 0767; 16: 0002, 0366, 0492, 0570;
 20: 0466; 21: 0715
Keeney, Frederick T.
 1: 0635; 3: 0002
Kefauver, Estes
 16: 0002
Kenyon, Dorothy
 7: 0169
King, Onria
 12: 0002
Lampkin, Daisy E.
 6: 0788
Lanier, R. O'Hara
 1: 0704
Lasseter, Dillard B.
 6: 0788
Lee, Ada M.
 1: 0704; 3: 0002; 4: 0002; 12: 0002;
 15: 0002; 16: 0187, 0492
Lee, Anna Laura
 6: 0788

Lehman, Herbert H.
 6: 0178, 0552
Lenroot, Katharine
 6: 0788
Lewis, A. L.
 1: 0704
Lewis, Alfred Baker
 6: 0552; 11: 0289
Logan, Rayford W.
 6: 0788
Long, Ralph
 1: 0704
Luquer, Anne Pierrepont
 1: 0704; 8: 0204
Luquer, Lea M.
 1: 0704
LuTour, Lou
 7: 0169
MacMillan, Joseph P.
 SUP 3: 0942
Marshall, Thurgood
 7: 0002
Marshall, W. G.
 2: 0002; 3: 0002
Maveety, P. J.
 2: 0275
McGill, N. K.
 2: 0002
McKeon, Boyd M.
 SUP 3: 0443
McNutt, Paul V.
 4: 0317
McPherson, Harry Wright
 SUP 3: 0443
Mead, Elizabeth L.
 2: 0002
Meigs, Ferris J.
 2: 0002, 0427
Meigs, Louise L.
 2: 0002, 0427; 3: 0002, 0169; 11: 0289;
 20: 0117
Mickens, A. G.
 2: 0002
Mitchell, Bertha L.
 1: 0051, 0164-0570, 0704; 2: 0002-0584;
 3: 0169, 0472; 4: 0444; 5: 0002, 0379,
 0725; 6: 0002; 7: 0002; 8: 0059;
 11: 0729; 12: 0002; 13: 0728; 14: 0002-
 0186, 0607; 15: 0002-0492, 0767;
 16: 0187; 17: 0183, 0635-0749;
 SUP 1: 0091, 0197, 0288, 0422, 0507,
 0862; SUP 2: 0001-0627, 0677, 0696;
 SUP 3: 0406, 0702
Montgomery, Pearl
 SUP 3: 0942
Moore, Arthur J.
 2: 0002
Moore, Daisy
 7: 0713, 0854
Moore, Richard V.
 1: 0002-0051; 3: 0169, 0593-0725; 5: 0379-
 0725; 6: 0178-0922; 7: 0002-0854;
 8: 0059, 0733; 9: 0002, 0458; 11: 0289,
 0729; 13: 0080; 14: 0607; 15: 0283,
 0492, 0653, 0767; 16: 0187, 0748;
 17: 0002, 0183; 20: 0755
Morris, Newbold
 11: 0289
Morse, Leila Livingston
 2: 0002; 3: 0002; 14: 0607; 15: 0283
Morton, Fletcher M.
 SUP 1: 0375-0422, 0507, 0682-0862
Moten, Etta
 6: 0552
Moton, Robert R.
 2: 0002
Muller, Charles G.
 11: 0289
Murray, Philip
 11: 0289
Murrell, Jesse L.
 2: 0002
Nichols, Lee
 1: 0051; 3: 0593, 0725; 6: 0178, 0358
Owens, Collier E.
 3: 0169
Parsons, Ralph W.
 7: 0713
Patterson, F. D.
 14: 0002, 0607; 16: 0366
Peek, Corrine
 2: 0275
Powell, Adam Clayton, Jr.
 7: 0854; 11: 0289
Randolph, A. Philip
 6: 0358

Ranslow, Cynthia M.
2: 0427-0584; 3: 0002, 0472; 20: 0117

Raymond, Paul
1: 0051

Rhodes, Margaret
2: 0584; 3: 0002-0169; 5: 0379; 9: 0292;
20: 0117; SUP 1: 0862-0952;
SUP 2: 0627

Roberts, Josie W.
SUP 1: 0035-0252, 0340-0457;
SUP 2: 0677

Rockefeller, John D., III
2: 0584

Rockefeller, Nelson A.
4: 0317; 6: 0358; 7: 0370; 11: 0289;
14: 0607; 15: 0002, 0415

Rodriguez, Edward R.
2: 0584; 8: 0002-0059; 14: 0002-0186;
15: 0283, 0492-0767; 16: 0002-0748;
17: 0002-0456; 19: 0849; 21: 0715

Rogers, G. D.
2: 0584; 3: 0002; 5: 0591, 0725; 8: 0059;
SUP 2: 0610

Roosevelt, Eleanor
15: 0653, 0767; 21: 0110

Roosevelt, James
8: 0733, 9: 0292; 16: 0366

Russell, Harold
8: 0427

Rutledge, Marjorie
SUP 3: 0942

Rutledge, Nathaniel
SUP 3: 0942

Rutledge, S. P.
SUP 2: 0627

Sage, E. C.
SUP 1: 0008-0026

Sampson, Edith S.
20: 0466

Sanger, Margaret
14: 0343; 15: 0002

Saxon, Maxwell W.
4: 0444; 5: 0002-0591; 6: 0002-0178;
7: 0169-0370; 9: 0292; 11: 0729;
13: 0728; 14: 0002; 15: 0002, 0283,
0492, 0653

Scott, Mazie T.
SUP 3: 0942

Scott, Ruth A.
14: 0343

Seaton, John L.
2: 0275

Sengstacke, John H.
6: 0358; 11: 0289; 14: 0252-0343; 15: 0283

Siegel, Seymour N.
21: 0002

Simpson, Abram L.
3: 0002; 4: 0002; SUP 3: 0089

Smith, John Sylvester
8: 0059; 16: 0002-0187

Snead, W. S.
2: 0002

Spingarn, Arthur B.
11: 0289

Stanier, John R.
3: 0169; 16: 0492

Stephens, Robert L.
5: 0725; 6: 0002-0178; 8: 0733; 9: 0002,
0292-0458

Sterne, Emma Gelders
16: 0570

Stewart, Andrew G.
8: 0427

Stewart, Carrie Mae
3: 0169

Sykes, Wilhelm A.
SUP 1: 0197, 0252-0375, 0457-0507,
0682-0952

Thompson, Eloise
4: 0444; 5: 0379-0591; 11: 0729

Thurman, Howard
3: 0593

Thurman, Sue
15: 0002

Tobias, Channing H.
11: 0289; 16: 0366; SUP 1: 0542

Tressler, Arlouine
3: 0169

Turrentine, F. M.
SUP 1: 0952; SUP 2: 0079

Wadsworth, J. J.
6: 0552-0788

Waley, Ruth W.
6: 0552-0788

Walker, J. E.
6: 0552-0788

Walker, Xenia H.
9: 0292; 13: 0345; 20: 0876; 21: 0110

Wallace, Henry A.
6: 0002

Warren, Fuller
11: 0289

Washington, Forrester B.
6: 0358

Watson, Edwin M.
4: 0317

Weaver, George L-P.
6: 0552

Weaver, Robert C.
5: 0002

Wellington, Elizabeth E.
1: 0051; 2: 0427; 3: 0472-0725

Wesley, Charles H.
6: 0788

Wetherell, T. J.
3: 0169

White, Walter F.
3: 0002; 4: 0002; 6: 0788, 0922; 14: 0343

Whitehurst, Harold B.
6: 0178

Wideman, Patricia D.
6: 0002

Williams, Ada L.
6: 0178

Williams, D. E.
6: 0922

Willis, Nelson M.
6: 0788

Wilson, Hazel T.
14: 0252-0343; 15: 0283; 16: 0187

Wilson, Jerona
6: 0178

Wilson, R. Helen
6: 0358

Wittreich, Andrew O.
5: 0725

Wright, H. K.
SUP 3: 0503

Zeiger, Ada
15: 0492

SUBJECT INDEX

The following index is a guide to the major topics in this microform publication. The first number after each entry refers to the reel, while the four-digit number following the colon refers to the frame number at which a particular file folder containing information on the subject begins. Hence, 8: 0204 directs the researcher to the folder that begins at Frame 0204 of Reel 8. Materials from the Supplement to Part 4 are identified by SUP preceding the reel number. Hence, SUP 1: 0001 refers to the folder that begins at Reel 1, Frame 0001, of the Supplement to Part 4. By referring to the Reel Index, which constitutes the initial section of this guide, the researcher will find the folder title, inclusive dates, and a list of Major Topics and Principal Correspondents, arranged in the order in which they appear on the film.

Academic programs, BCC

- adult education SUP 1: 0252
- athletics 3: 0725
- audiovisual program 8: 0204
- course outlines and tests 8: 0059
- curriculum 3: 0725; SUP 3: 1007
- domestic science department 1: 0704
- driver's education 5: 0215
- general 3: 0472-0725; 20: 0755
- guidance program 7: 0169
- home economics 4: 0002
- music 3: 0725
- religion 3: 0725; 15: 0002
- summer sessions 2: 0427-0584; 3: 0472;
4: 0002; 5: 0379; 8: 0059; 16: 0187;
20: 0755; SUP 1: 0047; SUP 3: 0223
- teacher training 2: 0584; SUP 1: 0035;
SUP 2: 0855
- testing 3: 0725
- vocational training 5: 0002; 8: 0204

Accounting and auditing, BCC

- 1: 0398, 0452; 2: 0427; 20: 0002

Accreditation and rating, BCC

- 2: 0275; 3: 0472; 5: 0591; 20: 0755;
SUP 2: 0788, 0855; SUP 3: 0263

Admissions, BCC

- 3: 0725; 7: 0370

Advisory Council of Civil Defense

- Bethune appointment 6: 0552

The Advocate

- 11: 0418; 21: 0337; 22: 0156; SUP 1: 0779;
SUP 2: 0627

African Students Union

- 6: 0178

Afro-American Life Insurance Company

- 1: 0704; 7: 0370

Afro-American Youth International Rotary Club

- 20: 0344, 0636

Airlines

- National Airlines 6: 0788

Alabama

- Farm Security Administration in 4: 0002

Allen, Irma Margaret

- 1: 0704

Alpha Chi Pi Omega Sorority and Fraternity

- 15: 0002, 0283, 0767; 16: 0002-0187, 0570-
0748; 17: 0002-0183; 20: 0466, 0636

Alumni, BCC

- 3: 0472; 4: 0444; 5: 0002, 0379-0591;
6: 0178-0358; 8: 0059; 11: 0276;
SUP 1: 0952; SUP 2: 0079; SUP 3: 0901

American Association for the United Nations

- 16: 0187

American Christian Palestine Committee

- 7: 0713; 10: 0061

American Council on Race Relations

5: 0002; 20: 0344

American Federation of Negro College Students

3: 0002

American Teachers Association

20: 0636

Amsterdam News

attacks on Bethune 6: 0552

Anderson, Marian

1: 0051; 2: 0002; 3: 0169, 0725; 6: 0358;
7: 0169

Antilynching legislation

1: 0116

Armed forces

integration of 6: 0922

see also Military personnel

Arms shipments

to Arab states 7: 0713

Arts and culture

Edward L. Jones exhibition 8: 0204

see also Literature

see also Music

see also Performing arts

Awards, decorations, and medals

Mary McLeod Bethune medallion
7: 0002

“Mother of the Century” 7: 0854

reading prizes 2: 0427

Spingarn Medal SUP 1: 0597–0682

Bethune, Albert, Jr.

6: 0552

Bethune, Mary McLeod

awards and honors 2: 0427; 3: 0002;
5: 0725; 7: 0169, 0854; 8: 0204; 10: 0659;

21: 0715; SUP 1: 0597–0682

birthday celebrations 7: 0169; 14: 0607;
20: 0755, 0876

Central Life Insurance Company
president 6: 0552

correspondence SUP 1: 0001–0952;
SUP 2: 0001–0677

death 3: 0169; 7: 0854; 15: 0002

estate 17: 0342

Farmer’s Home Administration
consultant 6: 0788

finances 6: 0552; 12: 0206–0873

life insurance policy 2: 0275;

SUP 3: 0147, 0263

memorials and commemorations

8: 0002–0059; 15: 0492; 16: 0002–0187,
0748; 17: 0002–0183; 20: 0636

newspaper and periodical articles on
2: 0275; 6: 0552; 11: 0729; 12: 0098

NYA service 3: 0472; SUP 3: 0059

political appointments 2: 0584; 6: 0552;
SUP 2: 0001

retirement pay 3: 0725

salary SUP 2: 0824; SUP 3: 0980

speaking engagements and invitations

5: 0002; 6: 0552–0788; 7: 0370, 0854;
11: 0729

speeches and addresses 20: 0344, 0636;
22: 0156

travel and appearances 4: 0444; 6: 0002,
0358, 0922; 7: 0370, 0646; 15: 0415;

21: 0715; SUP 1: 0197; SUP 2: 0627,
0677; SUP 3: 0309

“What Does the Negro Want?” (article)
12: 0098

Mary McLeod Bethune Circles

1: 0704; 7: 0370, 0713–0854; 11: 0729;
12: 0002

Bethune-Cookman College (BCC)

administration 3: 0725; 4: 0002–0444;
5: 0002–0725; 6: 0002–0922; 7: 0002–

0854; 8: 0002–0204; 20: 0344–0755;
SUP 3: 0182

The Advocate (newspaper) 11: 0418;
21: 0337; 22: 0156; SUP 1: 0779;

SUP 2: 0627

anniversaries 2: 0584; 3: 0002, 0169, 0725;
4: 0002, 0444; 7: 0370; 10: 0061;

11: 0418; 20: 0117; 21: 0337;

SUP 1: 0091, 0457; SUP 3: 0904

baccalaureate services and

commencement exercises 5: 0591;

7: 0002–0169, 0646; 11: 0418, 0729;

16: 0002; 21: 0337

by-laws 1: 0051; 3: 0725

charter 1: 0452; 4: 0002; 7: 0169;

SUP 2: 0713, 0788

Citizens National Committee for BCC

11: 0418

committee reports 20: 0117

events and celebrations 5: 0215, 0725;
 7: 0854; 8: 0059; 11: 0418, 0729;
 15: 0283; 16: 0366, 0748
 expansion plans 2: 0427; 3: 0472;
 SUP 3: 0059–0089, 0182
 fire insurance 2: 0275
 high school class visits to 2: 0584;
 15: 0283, 0767; 16: 0002
 housekeeping and maintenance
 committee 15: 0283, 0415; 16: 0366
 housing 20: 0755
 libraries 1: 0317, 0467; 2: 0002, 0427–
 0584; 3: 0002, 0169; 7: 0713; 20: 0755;
 SUP 1: 0159–0340; SUP 2: 0001–0079,
 0832
 loans and grants to 2: 0584; 3: 0593
 mailing lists 10: 0046–0659; 11: 0002,
 0276; 21: 0255
 name change SUP 1: 0026; SUP 3: 0980
 National Sponsoring Committee
 11: 0289
 reports 2: 0275
 Southern Association of Colleges and
 Secondary Schools study 4: 0444
 trust fund 5: 0725
 tuition SUP 2: 0713; SUP 3: 0147
 Women’s Committee 10: 0250
 Women’s Senate 7: 0169
 yearbook 6: 0002
see also Academic programs, BCC
see also Accounting and auditing, BCC
see also Accreditation and rating, BCC
see also Admissions, BCC
see also Alumni, BCC
see also Bethune-Cookman singers
see also Mary McLeod Bethune
 Foundation
see also Board of Trustees, BCC
see also Budget, BCC
see also Buildings and grounds, BCC
see also Endowment fund and campaign,
 BCC
see also Faculty and staff, BCC
see also Finances, BCC
see also Fund-raising, BCC
see also Libraries, BCC
see also Mailing lists
see also Music

see also Public relations, BCC
see also Scholarships, BCC
see also Sports and athletics, BCC
see also Students, BCC
see also Summer sessions, BCC
see also Women’s Advisory Board, BCC
see also Women’s Committee, BCC
see also Women’s Senate, BCC

Bethune-Cookman singers

1: 0704; 2: 0427–0584; 6: 0552; 11: 0729;
 12: 0002; SUP 1: 0340, 0457;
 SUP 2: 0203–0361, 0610, 0909;
 SUP 3: 0702

Mary McLeod Bethune Foundation

activities 14: 0186; 15: 0492, 0767;
 17: 0002
 articles of incorporation 13: 0674;
 15: 0415; 21: 0683
 board of trustees and advisory
 committee 13: 0674–0728; 14: 0002–
 0186; 21: 0786
 by-laws 13: 0674; 21: 0683
 correspondence 14: 0252–0607; 15: 0002–
 0283, 0653–0767; 16: 0002–0748;
 17: 0002–0183; 21: 0715
 establishment of 3: 0593; 13: 0674;
 14: 0252, 0343; 21: 0683, 0715; 22: 0156
 finances 13: 0728; 17: 0543–0749;
 18: 0002–0818; 19: 0002–0849; 20: 0002;
 22: 0104
 fund-raising 14: 0343, 0607; 15: 0002,
 0767; 16: 0002, 0187
 general 3: 0169, 0725; 7: 0002–0370;
 8: 0002–0204; 10: 0061
 mailing lists 1: 0704; 7: 0370, 0713–0854;
 11: 0729; 12: 0002; 21: 0786–0844;
 22: 0002
 meetings 15: 0415–0492

Bethune-Volusia Beach

5: 0725; 6: 0358, 0788–0922; 13: 0539;
 15: 0767; 20: 0636

The Bethunia

22: 0156

**Board of Education of the Methodist
Episcopal Church**

2: 0275; SUP 1: 0159–0197; SUP 2: 0696–
 0977; SUP 3: 0001–0520, 0942–0980

Board of Trustees, BCC

1: 0002–0704; 2: 0002–0584; 3: 0002–0725;
4: 0444; 5: 0379; 11: 0002; 15: 0492;
17: 0002; 20: 0117, 0755, 0876; 21: 0255;
SUP 1: 0026, 0047, 0091; SUP 2: 0696,
0788; SUP 3: 0223

Brown, Charlotte Hawkins

22: 0156

Brown v. Board of Education

7: 0646

Bryant, H. C.

6: 0552

Buchman, Frank

8: 0204

Budget, BCC

1: 0051, 0244, 0317, 0635; 3: 0002, 0593,
0725; 5: 0002, 0379, 0591; 13: 0063,
0080; 15: 0492; 20: 0466; SUP 2: 0832,
0855, 0909; SUP 3: 0089

Building Committee, BCC

1: 0051

Buildings and grounds, BCC

condition of 5: 0002

dedications 1: 0635; 2: 0584; 3: 0002;
16: 0748; SUP 1: 0542

funding 3: 0593; SUP 2: 0855, 0977

furnishings 2: 0002; 5: 0215

repairs and improvements 1: 0051;
2: 0002, 0275, 0427, 0584; 3: 0002, 0472,
0593, 0725; 4: 0317, 0444; 5: 0002, 0379;
6: 0358; 7: 0854; 15: 0283; 16: 0366,
0492; 17: 0002, 0183; 20: 0117, 0755;
SUP 1: 0197, 0422; SUP 3: 0089–0147,
0263–0406, 0503

see also Building Committee, BCC

Bunche, Ralph J.

address at BCC 22: 0156

Burks, James H.

6: 0358

Business and industry

in Daytona Beach, Florida 6: 0178

and education of African Americans

8: 0733; 9: 0002, 0584; 11: 0729

National Association of Negro Business
and Professional Women's Clubs
20: 0466

Welricha Corporation 7: 0169

see also Bethune-Volusia Beach

California

BCC contributors 11: 0002

see also Los Angeles, California

see also San Francisco, California

Carver, George Washington

birthplace 6: 0922

George Washington Carver Foundation

15: 0767

Central Life Insurance Company

3: 0169; 6: 0552–0788; 12: 0002; 20: 0344

Chicago Defender

6: 0788

Chicago, Illinois

BCC public relations in SUP 1: 0288,
0340

list of BCC workers 10: 0250; 11: 0002

prospective BCC contributors 10: 0149;
11: 0002

Church of Christian Fellowship (Los Angeles, California)

5: 0002

CIO Political Action Committee

7: 0169

Citizens' Welfare League (Daytona Beach, Florida)

7: 0370; 8: 0204; 21: 0786

Civil defense

Advisory Council of Civil Defense

6: 0552

conference on 6: 0788

Dade County Defense Council 6: 0552

Federal Civil Defense Administration
6: 0552, 0922

Civil Rights, President's Committee on

6: 0922

Clergy

6: 0358; 10: 0659

Colleges and universities

appropriations for 2: 0275

Association of Colleges and Secondary
Schools for Negroes 1: 0570

Barber-Scotia College 7: 0169

Boston University 15: 0767

Cookman Institute 11: 0418

Daytona-Cookman Collegiate Institute
11: 0418; 21: 0337; SUP 1: 0008, 0026

Daytona Educational and Industrial
Institute 20: 0311; 21: 0407–0632

- Daytona Normal and Industrial Institute
3: 0472; 11: 0418; 12: 0159, 0206–0873;
20: 0311
- Florida A&M College 5: 0725
- historically black 11: 0002, 0729;
SUP 2: 0754, 0855–0909
- Howard University 6: 0922
- International Christian University
6: 0002
- Iowa Wesleyan College 7: 0713
- Morehouse College 16: 0492
- Morristown Normal and Industrial
College 2: 0275
- Rollins College 3: 0002; 5: 0725
- small colleges SUP 3: 0443
- Southern Association of Colleges and
Secondary Schools 3: 0725; 7: 0169
- St. Philip's College 7: 0646
- Walkers Commercial Vocational College
6: 0552–0788
- Wiley College 5: 0591
see also Bethune-Cookman College
- Colston, James A.**
3: 0472; 6: 0178; SUP 3: 0904
- Columbus Council for Democracy (Ohio)**
8: 0204
- Communism**
poetry on 6: 0358
see also McCarthyism
- Conferences and conventions**
- African Students Union 6: 0178
- Civil Defense and Citizenship 6: 0788
- Department of Education on housing
6: 0922
- National Council of Negro Women
11: 0729; 16: 0492; 20: 0344
- National Emergency Conference on
Minority Veterans Problems 5: 0002
- National Methodist Students
SUP 3: 0059
- New Farmerettes of America 4: 0444
- New Homemakers of America 7: 0002
- United Methodist Conference (April 24–
May 7, 1940) 4: 0069
- United Nations Conference on
International Organization 4: 0444
- Women's Leadership Conference
7: 0002; 20: 0466
- Working Conference for Negro Teachers
4: 0002
- World Friendship Festival and Seminar,
Salzburg 7: 0002
- Congress of Industrial Organizations**
see CIO Political Action Committee
- Conscientious objectors**
5: 0002; 20: 0117
- Cookman Institute**
1895 commencement 11: 0418
- Craig, Nancy**
8: 0427
- Crime and criminals**
see Prisons and prisoners
- The Crisis**
financial statement 7: 0002
- Cuba**
students from 7: 0646
- Dade County Defense Council**
6: 0552
- Danielsen Fund**
14: 0607
- Dawson, William L.**
tribute 5: 0725
- Daytona Beach, Florida**
BCC appreciation day 7: 0854
BCC fund-raising 6: 0178; 9: 0292
businesses, physicians, and attorneys in
21: 0255
- Daytona-Cookman Collegiate Institute**
11: 0418; 21: 0337; SUP 1: 0008, 0026
- Daytona Educational and Industrial
Institute**
20: 0311; 21: 0407–0632
- Daytona Normal and Industrial Institute**
3: 0472; 11: 0418; 12: 0159, 0206–0873;
20: 0311
- Debt**
BCC SUP 2: 0977
- Delta Sigma Theta sorority**
Beta Sigma chapter 10: 0659
- Democratic Party**
members 10: 0659
- DePriest, Oscar**
SUP 1: 0252
- Disaster relief**
SUP 3: 0530–0633

Discrimination

5: 0002; 6: 0552; 7: 0370; 20: 0117

Drew, Charles

tribute 6: 0358

Ebony (magazine)

11: 0289; 12: 0098

Ebony Beauty School

10: 0061

Education

corporations and 8: 0733; 9: 0002, 0584;
11: 0729

presentation on 11: 0837

spending for 2: 0275

Veterans Educational Facilities Program

5: 0215, 0379

see also Bethune-Cookman College

see also Board of Education of the
Methodist Episcopal Church

see also Colleges and universities

see also General Education Board

see also Schools

see also Teachers

see also Vocational education and
training

Elections

New York City mayoral race 8: 0204,
0733; 9: 0002; 12: 0098

Employment

White, Walter, on 6: 0922

see also Faculty and staff, BCC

see also Wages and salaries

Endowment fund and campaign, BCC

1: 0002-0051, 0467, 0704; 2: 0002-0427;
3: 0593; 4: 0002; 5: 0379; 20: 0117;
SUP 2: 0909; SUP 3: 0147-0182, 0361-
0406, 0980

see also Fund-raising, BCC

Faculty and staff, BCC

alumni 5: 0591

bursar SUP 3: 0263

business manager 5: 0002, 0215, 0379;

7: 0002; SUP 2: 0855

committees 3: 0725

dean SUP 2: 0855; SUP 3: 0263

dean of women 4: 0444

directory 6: 0552

general 3: 0472, 0725; 4: 0317; 5: 0379;

8: 0204; 10: 0580; 20: 0344, 0755;

SUP 1: 0288- 0952; SUP 2: 0001, 0203-
0294, 0456, 0627-0677, 0713, 0824-
0832; SUP 3: 0147-0182, 0309-0443,
0980

guidelines 8: 0002, 0059

increase and benefits 3: 0169

music instructors SUP 1: 0035-0457,
0779; SUP 2: 0754

president 1: 0164; 5: 0002

reduction of 16: 0570, 0748

salaries 1: 0051; 3: 0593; 4: 0002;

SUP 1: 0779, 0862; SUP 3: 0309

summer session faculty 5: 0591

teachers 4: 0002

white faculty member 20: 0117

Farmer's Home Administration

Bethune resignation as consultant
6: 0788

Farm Security Administration

suspension of supervisors for beating
Alabama residents 4: 0002

Federal Civil Defense Administration

6: 0552, 0922

Federal Communications Commission

5: 0002

Field Foundation

9: 0458

Finances, BCC

1: 0116-0398, 0467-0704; 2: 0002-0584;
3: 0002, 0472-0725; 4: 0444; 5: 0725;
6: 0002; 7: 0713; 12: 0206-0873;
13: 0001-0539; 15: 0492; 17: 0002;
20: 0117, 0466, 0755; 21: 0110;
SUP 1: 0026; SUP 2: 0610, 0696, 0855-
0977; SUP 3: 0001, 0147, 0223-0361,
0980

see also Budget, BCC

see also Endowment fund and campaign,
BCC

see also Fund-raising, BCC

Finances, personal

Bethune 6: 0552; 12: 0206-0873

Fire insurance

2: 0275

Florida

BCC fund-raising campaign 9: 0584

Federation of Colored Women's Clubs
1: 0704

Improved Benevolent Protective Order
of Elks of the World 20: 0344
state review of BCC teachers 4: 0002
see also Daytona Beach, Florida
see also Jacksonville, Florida

Florida A&M College

5: 0725

**Florida Medical, Dental and
Pharmaceutical Association**

10: 0061

Food and food industry

4: 0002, 0317; SUP 2: 0977

Fraternities and sororities

Alpha Chi Pi Omega Sorority and
Fraternity 15: 0002, 0283, 0767;
16: 0002-0187, 0570-0748; 17: 0002-
0183; 20: 0466, 0636

Delta Sigma Theta sorority 10: 0659

Kappa Alpha Psi fraternity 7: 0854

Friends of Bethune-Cookman College

6: 0002; 8: 0733; 9: 0002, 0292, 0458, 0584,
0741; 10: 0250; 0433, 0659; 13: 0240,
0345; 21: 0002, 0110, 0255

Fund-raising, BCC

benefits honoring Bethune 3: 0434;
4: 0317

campaigns 5: 0725; 6: 0002-0358;
8: 0602-0733; 9: 0002-0884; 10: 0250,
0580, 0659; 11: 0002, 0289, 0837;
13: 0063; 15: 0415; 20: 0876; 21: 0002,
0255, 0715

Friends of Bethune-Cookman College

6: 0002; 8: 0733; 9: 0002, 0292, 0458,
0584, 0741; 10: 0250; 0433, 0659;
13: 0240, 0345; 21: 0002, 0110, 0255

general 1: 0051-0398, 0467-0704; 2: 0002,
0427, 0584; 3: 0002-0169, 0472-0593;
4: 0002, 0444; 5: 0002-0591; 6: 0552,
0922; 7: 0169; 8: 0204; 11: 0729;
20: 0755; 21: 0110; SUP 1: 0542-0597,
0862; SUP 2: 0203-0361, 0713-0788,
0977; SUP 3: 0001-0059, 0223, 0895,
0904

**General Alumni Association of Bethune-
Cookman College**

5: 0379-0591; 6: 0178-0358

General Education Board

SUP 1: 0008-0507; SUP 2: 0754-0788,
0832-0909; SUP 3: 0001, 0223-0309

**GI Bill (Servicemen's Readjustment Act of
1944)**

3: 0472

Gifts and contributions

to BCC 1: 0398; 2: 0002, 0584; 3: 0002-
0169, 0472-0593; 4: 0444; 5: 0002-0215,
0591; 6: 0178-0552; 8: 0602-0733;
9: 0292-0741; 11: 0729; 12: 0002;
20: 0344-0466, 0876; SUP 1: 0457-0952;
SUP 2: 0001, 0203-0658, 0832-0977;
SUP 3: 0001-0089, 0223-0361, 0443-
0503, 0702-0895

to Mary McLeod Bethune Foundation
7: 0713; 14: 0343-0607; 15: 0002-0283,
0767; 16: 0002-0748; 17: 0002-0183;
21: 0715

to United Negro College Fund 8: 0059

Government, U.S.

Farmer's Home Administration 6: 0788

Farm Security Administration 4: 0002

Federal Civil Defense Administration
6: 0552, 0922

Federal Communications Commission
5: 0002

NYA 1: 0704; 2: 0584; 3: 0472; 4: 0002,
0317; 10: 0659; 20: 0344; SUP 1: 0682,
0779-0862; SUP 2: 0001-0561, 0658-
0677; SUP 3: 0059

President's Committee on Civil Rights
6: 0922

see also Government property

Government property

BCC acquisition of 5: 0379

Gray, William H.

5: 0591

Gulfside Mission

7: 0370

Haiti

Bethune travel to 6: 0002

literature for 6: 0788

Hayes, Roland

1: 0704; 2: 0002, 0427; 3: 0169-0434;

8: 0602

Health facilities and services

BCC 6: 0552
donation of BCC land for 2: 0275
Howard University 6: 0922
McLeod Hospital and Training School
for Nurses 8: 0204; 11: 0418;
SUP 1: 0047

Hindman Settlement School

7: 0370

Hoover, Herbert

support of private philanthropy 8: 0733;
9: 0002, 0584; 11: 0729

Housing

Department of Education conference on
6: 0922
Durkeeville [Jacksonville, Florida]
housing project 1: 0704
for veterans 5: 0002, 0215, 0379; 20: 0755;
21: 0337

Houston, Charles H.

6: 0358

Howard University

6: 0922

Hughes, Langston

SUP 1: 0197

Hungerford School

3: 0593; 7: 0002; 20: 0344; SUP 1: 0779;
SUP 2: 0658

Illinois

NYA programs in 2: 0584

**Improved Benevolent Protective Order of
Elks of the World**

Florida State Association 20: 0344

India

visit of Ambassador Vijaya Lakshmi
Pandit to BCC 6: 0552

Insurance and insurance industry

Afro-American Life Insurance Company
1: 0704; 7: 0370; SUP 1: 0952
Bethune's life insurance policies 2: 0275;
SUP 2: 0713; SUP 3: 0147, 0263
Central Life Insurance Company 3: 0169;
6: 0552-0788; 12: 0002; 20: 0344
fire 2: 0275; SUP 3: 0089
Life Insurance Company of Florida
8: 0059
National Negro Insurance Association
10: 0580

International Christian University [Japan]

6: 0002

International Labor Defense

2: 0002

Iowa Wesleyan College

7: 0713

Israel

border and security problems 7: 0854

Jacksonville, Florida

Durkeeville housing project 1: 0704

Japan

International Christian University
6: 0002

Jones, Edward L.

8: 0204

Kaiser, Henry J.

6: 0002

Kappa Alpha Psi fraternity

7: 0854

Korean War

3: 0169; 6: 0358

Labor unions and organizations

6: 0922; 11: 0837

Legislation, federal

antilynching 1: 0116
GI Bill 3: 0472

Lewis, Joe

3: 0169

Liberia

Bethune travel plans 6: 0922

Libraries, BCC

1: 0317, 0467; 2: 0002, 0427-0584; 3: 0002-
0169, 0725; 7: 0713; 20: 0755

Life insurance

Afro-American Life Insurance Company
1: 0704; 7: 0370; SUP 1: 0952
Bethune's life insurance policies 2: 0275;
SUP 2: 0713; SUP 3: 0147, 0263
Central Life Insurance Company 3: 0169;
6: 0552-0788; 12: 0002; 20: 0344
fire 2: 0275; SUP 3: 0089
Life Insurance Company of Florida
8: 0059

Powell Lindsay's Negro Drama Group

5: 0591

Literature

poetry 6: 0358; 8: 0204

Loans

to BCC 2: 0584; 3: 0593; SUP 2: 0855;
SUP 3: 0001
from Board of Education of Methodist
Episcopal Church SUP 3: 0520
student loans 2: 0275; SUP 1: 0197, 0862;
SUP 3: 0443, 0942

Logan, Rayford W.

6: 0788

Los Angeles, California

Church of Christian Fellowship 5: 0002

Lynching

federal antilynching legislation 1: 0116

Mailing lists

for BCC 10: 0046–0659; 11: 0002, 0276;
21: 0255
for Mary McLeod Bethune Foundation
1: 0704; 7: 0370, 0713–0854; 11: 0729;
12: 0002; 21: 0786–0844; 22: 0002

McCarthyism

in Florida 20: 0636

McLeod Hospital and Training School for Nurses

8: 0204; 11: 0418; SUP 1: 0047

Medical personnel

BCC fund-raising amongst 10: 0149
Florida Medical, Dental, and
Pharmaceutical Association 10: 0061
nurses 8: 0204

Methodist Church

4: 0069; SUP 3: 0059–0089
see also Board of Education of the
Methodist Episcopal Church

Methodist Episcopal Church

see Board of Education of the Methodist
Episcopal Church

Military personnel

BCC ROTC unit 3: 0169, 0593; 6: 0552
GI Bill 3: 0472
in South Korea 3: 0169
see also Armed forces
see also Veterans

Missions and missionaries

correspondence from 1: 0635
Gulfside Mission 7: 0370

Moore, Richard V.

5: 0379, 0591; 6: 0552; 20: 0755; 22: 0156

Moral rearmament

8: 0204

Morehouse College

16: 0492

Morris, Newbold

8: 0204, 0733; 9: 0002; 12: 0098

Morristown Normal and Industrial College

2: 0275

Music

BCC music program 2: 0584; 3: 0725;
SUP 1: 0035–0457, 0779; SUP 2: 0754
Bethune-Cookman singers 1: 0704;
2: 0427–0584; 6: 0552; 11: 0729;
12: 0002; SUP 1: 0340, 0457;
SUP 2: 0203–0361, 0610, 0909;
SUP 3: 0702

Central Florida Symphony Orchestra
10: 0659

concerts 1: 0051, 0704; 2: 0002, 0427;
3: 0169, 0725; 4: 0444; 6: 0358; 7: 0169,
0854; 8: 0602; 11: 0418; 21: 0337;
22: 0156

“I’m Just Wild About Harry” (song)
8: 0204

National Airlines

6: 0788

National Association for the Advancement of Colored People (NAACP)

2: 0002; 6: 0788; 7: 0169; 10: 0659

National Association of Colored Women

11: 0418; SUP 1: 0597

National Association of Negro Business and Professional Women’s Clubs

20: 0466

National Association of Teachers in Colored Schools

SUP 1: 0091

National Citizens Political Action Committee

5: 0002, 0215

National Council of Churches of Christ

6: 0358

National Council of Negro Women (NCNW)

6: 0552–0922; 7: 0002, 0854; 8: 0002;
10: 0061, 0659; 11: 0729; 16: 0492;
20: 0344, 0636

National Emergency Conference on Minority Veterans Problems
5: 0002

National Fund for Medical Education
7: 0169, 0370, 20: 0636

National Issues Committee
7: 0370; 20: 0636

National Negro Insurance Association
10: 0580

National Negro Youth Congress
SUP 3: 0059

National Urban League
SUP 1: 0001; SUP 2: 0627

National Youth Administration (NYA)
1: 0704; 2: 0584; 3: 0472; 4: 0002, 0317;
10: 0659; 20: 0344; SUP 1: 0682, 0779–
0862; SUP 2: 0001–0561, 0658–0677;
SUP 3: 0059

Natural disasters
Red Cross relief SUP 3: 0530, 0633
storm and fire damage SUP 3: 0503

Newark, New Jersey
Mary McLeod Bethune Circle 7: 0713–
0854

New Farmerettes of America
4: 0444

New Homemakers of America
7: 0002

Newspapers and periodicals
Amsterdam News 6: 0552
Chicago Defender 6: 0788
National Notes 20: 0344
New York Age 11: 0729
Pittsburgh Courier 6: 0788
Southeastern Herald 11: 0418

New York City
BCC contributors 10: 0250–0659; 11: 0002
BCC fund-raising campaign 9: 0002,
0584
businesses in 10: 0149–0443
mayoral campaign of Newbold Morris
8: 0204, 0733; 9: 0002; 12: 0098

Nuclear weapons
6: 0358

Nurses
training 8: 0204

Orange Belt Teachers Association
10: 0061

Palmer Memorial Institute
22: 0156

Pandit, Vijaya Lakshmi
6: 0552

Penn School (St. Helena Island, South Carolina)
2: 0427

Performing arts
“Facing New Frontiers: The Story of Mary Bethune” (play) 12: 0098
lecture concerts 3: 0002; 8: 0602
Powell Lindsay’s Negro Drama Group
5: 0591
Ouanga Haitian opera 6: 0922
theater 7: 0854
see also Music

Philanthropy
Hoover, Herbert—support 8: 0733;
9: 0002, 0584

Piney Woods Country Life School
6: 0358

Pittsburgh Courier
6: 0788

Political appointments
2: 0584; 6: 0552; SUP 2: 0001

President’s Committee on Civil Rights
6: 0922

Prisons and prisoners
petition for clemency 5: 0725

Progressive Citizens of America
5: 0379

Property
transfer to BCC SUP 3: 0089

Public relations, BCC
1: 0244; 2: 0275; 5: 0379; 6: 0002, 0358,
0788; 8: 0204, 0412–0733; 9: 0002–0919;
10: 0002–0879; 11: 0002–0837; 20: 0876;
21: 0002, 0337; SUP 2: 0754–0788, 0832;
SUP 3: 0089, 0702, 0980

Radio and television
5: 0002; 6: 0002; 8: 0427

Randolph, A. Philip
2: 0584

Ranslow, Cynthia M.
8: 0204; SUP 3: 0904

Religion
BCC program 3: 0725; 15: 0002
Church of Christian Fellowship 5: 0002

- general SUP 3: 1007
 Methodist Church 4: 0069; SUP 3: 0059–0089
 National Council of Churches of Christ 6: 0358
 prayers 8: 0204
 Religious Emphasis Week 7: 0854
see also Board of Education of the Methodist Episcopal Church
see also Clergy
see also Missions and missionaries
- Reserve Officers Training Corps (ROTC)**
 3: 0169, 0593; 6: 0552
- Harrison Rhodes Memorial Library**
 1: 0317, 0467; 2: 0002, 0427–0584; 3: 0002, 0169; 7: 0713; 20: 0755
- Richardson, Henry J.**
 6: 0178
- Rollins College**
 3: 0002; 5: 0725
- Roosevelt, Eleanor**
 2: 0427; 3: 0593; 6: 0002; 7: 0169; 8: 0204, 0602–0733; 9: 0002, 0584; 11: 0289, 0837; 21: 0110, 0715; 22: 0156
- Franklin Delano Roosevelt Foundation**
 8: 0204; 16: 0187
- Russell, Harold**
 8: 0427
- San Francisco, California**
 United Nations Conference on International Organization 4: 0444
- Scholarships, BCC**
 1: 0244, 0704; 3: 0593, 0725; 6: 0552–0788; 7: 0370, 0713; 8: 0059; 14: 0607; 15: 0002; 16: 0187; SUP 2: 0713–0788, 0980
- Schools**
 Hindman Settlement School 7: 0370
 Hungerford School 3: 0593; 7: 0002; 20: 0344; SUP 1: 0779; SUP 2: 0658
 Penn School 2: 0427
 Piney Woods Country Life School 6: 0358
see also Colleges and universities
see also Education
- Schuyler, Philippa**
 7: 0854
- Scott, Mazie T.**
 SUP 3: 0942
- Servicemen's Readjustment Act of 1944**
see GI Bill
- Socialism**
 6: 0358
- Social workers**
 SUP 2: 0610
- South Carolina**
see St. Helena Island, South Carolina
- Southeastern Federation of Colored Women's Clubs**
 11: 0418
- Southern Association of Colleges and Secondary Schools**
 3: 0725; 4: 0444; 7: 0169
- Sports and athletics, BCC**
 5: 0379; 6: 0922; 7: 0002; 8: 0002
- St. Benedict's Preparatory School, New Jersey**
 commencement exercises 20: 0636
- St. Helena Island, South Carolina**
 Penn School 2: 0427
- St. Philip's College**
 7: 0646
- Students, BCC**
 1: 0164–0398, 0635; 2: 0275–0427; 3: 0002–0169, 0472–0725; 4: 0002, 0444; 5: 0002; 6: 0358; 7: 0002, 0646–0854; 8: 0002–0059; 11: 0418; 20: 0755; SUP 1: 0197, 0597–0682, 0862; SUP 2: 0001–0658, 0832, 0909; SUP 3: 0001, 0443
- Summer sessions, BCC**
 enrollment 2: 0427–0584; 3: 0472; 4: 0002; 5: 0379; 8: 0059; 16: 0187; 20: 0755; SUP 1: 0047; SUP 3: 0223
- Taxation**
 7: 0002; 14: 0607; 15: 0002; 16: 0366–0492; 17: 0456; 20: 0002
- Teachers**
 music SUP 1: 0035–0457, 0779; SUP 2: 0754
 Orange Belt Teachers Association 10: 0061
 and racial issues 8: 0204
 training at BCC 2: 0584; SUP 1: 0035; SUP 2: 0855

Teachers cont.

Working Conference for Negro Teachers
4: 0002

Tobias, Channing H.

8: 0602

Travel and appearances

by Bethune 4: 0444; 6: 0002, 0922;
7: 0370, 0646; 21: 0715; SUP 1: 0197;
SUP 2: 0627, 0677; SUP 3: 0309

Truman, Harry S.

8: 0204

**United Beauty School Owners and
Teachers Association**

15: 0002, 0283; 20: 0466, 0636

United Nations

Conference on International
Organization 4: 0444
see also American Association for the
United Nations

United Negro College Fund

3: 0169, 0472-0725; 4: 0444; 5: 0379;
6: 0002, 0552; 7: 0713; 8: 0059; 10: 0250;
11: 0002; 15: 0415; 20: 0755

Veterans

discrimination against 5: 0002
housing for 5: 0002, 0215, 0379; 20: 0755;
21: 0337
see also Veterans Administration
see also Veterans Educational Facilities
Program

Veterans Administration

5: 0379-0725; 6: 0552; 20: 0755

Veterans Educational Facilities Program

5: 0215, 0379

Vocational education and training

at BCC 5: 0002
for high school graduates 6: 0552
nurses 8: 0204
teacher training 2: 0584; SUP 1: 0035;
SUP 2: 0855
Veterans Administration programs
5: 0591-0725
Walkers Commercial Vocational College
6: 0552-0788

Volusia County, Florida

BCC land donated to SUP 3: 0001, 0361

Wages and salaries

2: 0275; 3: 0725; 20: 0002; SUP 1: 0779-
0862

Walkers Commercial Vocational College

6: 0552-0788

Washington, Forrester B.

7: 0370

Welricha Corporation

7: 0169; 13: 0539

White, Walter

6: 0922

Women's Advisory Board, BCC

1: 0051-0467, 0704; 2: 0002, 0427-0584;
3: 0002-0169, 0434-0725; 4: 0444;
7: 0002; 10: 0659; 11: 0002; 20: 0117;
21: 0786

Women's Committee, BCC

10: 0250

Women's Leadership Conference

7: 0002; 20: 0466

Women's organizations

Delta Sigma Theta sorority 10: 0659
Florida Federation of Colored Women's
Clubs 1: 0704
National Association of Colored Women
11: 0418; SUP 1: 0597
National Association of Negro Business
and Professional Women's Clubs
20: 0466
NCNW 6: 0552-0922; 7: 0002, 0854;
8: 0002; 10: 0061, 0659; 11: 0729;
16: 0492; 20: 0344, 0636
Southeastern Federation of Colored
Women's Clubs 11: 0418
Women's Advisory Board, BCC 1: 0051-
0467, 0704; 2: 0002, 0427-0584; 3: 0002-
0169, 0434-0725; 4: 0444; 7: 0002;
10: 0659; 11: 0002; 20: 0117; 21: 0786
Women's Committee, BCC 10: 0250
Women's Leadership Conference
7: 0002; 20: 0466
Women's Senate, BCC 7: 0169
Women United 10: 0061
Young Women's Christian Association
10: 0659

Women's Senate, BCC

7: 0169

Women United

10: 0061

Woodson, Carter G.

tribute 6: 0358

Working Conference for Negro Teachers

4: 0002

World Friendship Festival and Seminar

7: 0002

World War II

3: 0472; SUP 3: 0443

Young Men's Christian Association

10: 0659

Young Women's Christian Association

10: 0659

Youth

Afro-American Youth International

Rotary Club 20: 0344, 0636

National Negro Youth Congress

SUP 3: 0059

NYA 1: 0704; 2: 0584; 3: 0472; 4: 0002,

0317; 10: 0659; 20: 0344; SUP 1: 0682,

0779-0862; SUP 2: 0001-0561, 0658-

0677; SUP 3: 0059

Young Men's Christian Association

10: 0659

Young Women's Christian Association

10: 0659

see also Students, BCC

RELATED TITLES IN BLACK STUDIES RESEARCH SOURCES

Records of the National Association of Colored Women's Clubs, 1895–1992

**Part 1: Minutes of National Conventions, Publications,
and President's Office Correspondence**

Part 2: President's Office Files, 1958–1968

New Deal Agencies and Black America

Papers of the NAACP

Part 11: Special Subject Files, 1912–1939

Part 14: Race Relations in the International Arena, 1940–1955

**Part 16: Board of Directors Correspondence and
Committee Materials, 1919–1955**

Part 18: Special Subjects, 1940–1955

**Papers of Carter G. Woodson and the Association for the Study of Negro
Life and History, 1915–1950**

The Ivy Leaf, 1921–1998: A Chronicle of Alpha Kappa Alpha Sorority

RELATED TITLES IN WOMEN'S STUDIES

The Papers of Eleanor Roosevelt, 1933–1945

**Records of the Women's Bureau of the
U.S. Department of Labor, 1918–1965**