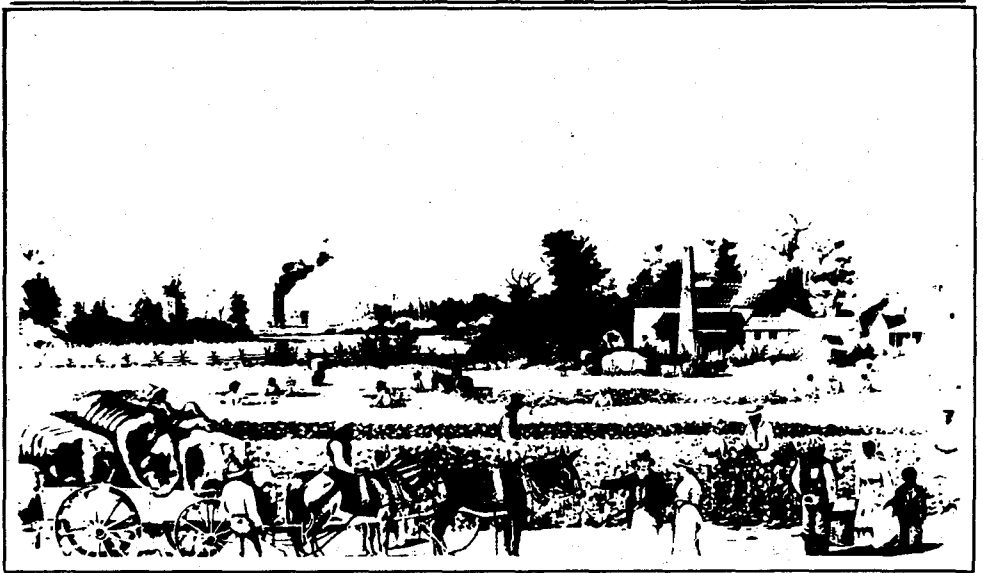


# **RECORDS OF ANTE-BELLUM SOUTHERN PLANTATIONS**

**FROM THE REVOLUTION THROUGH  
THE CIVIL WAR**

**Series C**

**Selections from Holdings of the  
Library of Congress**



**UNIVERSITY PUBLICATIONS OF AMERICA**

Cover illustration by W.A. Walker. Original at the South Caroliniana Library, Columbia, SC.

*A Guide to*

**Records of Ante-Bellum  
Southern Plantations  
from the Revolution through  
the Civil War**

**Series C**

**Selections from Holdings of the  
Library of Congress**

**Part 1: Virginia**

**Part 2: Alabama, Georgia, and South Carolina**

**General Editor  
Kenneth M. Stamp**

**Associate Editor  
Randolph Boehm**

**Guide Compiled by  
Martin Schipper**

**A microfilm project of  
UNIVERSITY PUBLICATIONS OF AMERICA, INC.  
44 North Market Street • Frederick, MD 21701**

Copyright © 1986 by University Publications of America.  
All rights reserved.

ISBN 0-89093-778-8.

ISBN 0-89093-779-6.

# TABLE OF CONTENTS

## Part 1: Virginia

Note on Sources .....	vi
Editorial Note .....	vi
Table of Contents .....	vii
Reel Index .....	1

## Part 2: Alabama, Georgia, and South Carolina

Note on Sources .....	14
Editorial Note .....	14
Table of Contents .....	15
Reel Index .....	17



**Series C**  
**Selections from Holdings of  
the Library of Congress**

**Part 1: Virginia**

## NOTE ON SOURCES

The original documents reproduced in this micropublication are housed at the Library of Congress, Manuscripts Division, James Madison Building, Washington, D.C. The map of Virginia reproduced among the introductory materials in these collections is that of Anthony Finley, 1824.

## EDITORIAL NOTE

The papers in these collections were microfilmed in their entirety, with the exceptions as noted in the William B. Randolph Papers and the Bruce Family Papers. For additional materials on the Carter Family, researchers may want to consult another UPA micropublication, *Records of Antebellum Southern Plantations, Series E, Selections from the University of Virginia Library*.



# TABLE OF CONTENTS

## Reel Index

<b>Reel 1</b>	
"Shirley" Plantation Journals .....	1
<b>Reel 2</b>	
William B. Randolph Papers .....	2
<b>Reel 3</b>	
William B. Randolph Papers cont. ....	4
<b>Reel 4</b>	
William B. Randolph Papers cont. ....	5
<b>Reel 5</b>	
William B. Randolph Papers cont. ....	7
<b>Reel 6</b>	
William B. Randolph Papers cont. ....	8
<b>Reel 7</b>	
William B. Randolph Papers cont. ....	9
Bruce Family Papers	
<b>Reel 8</b>	
Bruce Family Papers cont. ....	11

# REEL INDEX

## Reel 1

### ***"Shirley" Plantation Journals, 1816-1872, Hopewell, Virginia***

"Shirley" Plantation in Charles City County, Virginia, on the northern bank of the James River was in the heart of Tidewater Virginia. Hill Carter (1796-1875), a great-grandson of Robert "King" Carter, began these journals in 1816 when he resigned from the navy and returned from New York to assume the ancestral estate. His portion of the estate division of 1817 included 107 slaves. Carter was an early agricultural experimenter, keeping a record in these journals of fallowing and crop rotations, techniques in the application of gypsum, lime, and marl, and attempts at direct marketing of agricultural produce in New York. Crop notes list the wheat, corn, livestock, and other harvests of each year. Devastations noted by Carter included the Hessian Fly, rust, weather, and a cholera epidemic among his slaves. An 1835 inventory of farming utensils listed many machines, 17 milch cows, 21 work oxen, 29 cattle and oxen not in use, 2 bulls, and 14 hogs. Carter employed a succession of overseers to run this large estate, and he sold some of the slaves to cover expenses in years of failing crops. Civil War entries note that 80 slaves had left "Shirley" Plantation for the federal lines leaving Carter with 4 cradles and 10 broken-down old men and women in the harvest of 1864, "a poor business."

*N.B.* For more information on Hill Carter and "Shirley" Plantation, refer to Ulrich B. Phillips, *Life and Labor in the Old South* (Boston, Massachusetts: Little, Brown and Company, 1925) pp. 228-232.

0000 Introductory Materials.

0000 Hill Carter, "Shirley" Plantation Journal, Volume 1, 1816-1827. 80 frames.

0080 Hill Carter, "Shirley" Plantation Journal, Volume 2, 1828-1839. 177 frames.

0257 Hill Carter, "Shirley" Plantation Journal, Volume 3. 1839-1851. 189 frames.

0446 Hill Carter, "Shirley" Plantation Journal, Volume 4, 1851-1872. 184 frames.

# Reel 2

## *William B. Randolph Papers, 1696-1884, Henrico County, Virginia*

Earliest records relate to Peter Randolph, his son William Randolph, grandson Peter Shipwith Randolph and wife Elizabeth and their son William B. Randolph, all of whom in their turn resided at "Chatsworth," on the James River near Richmond in Henrico County. The size of this estate fluctuated from 1,300 acres in 1785 to 990 acres in 1815 and finally settled at 1,286 acres in the 1850s. The number of slaves remained between 30 and 40 until the Civil War. Wheat and corn culture at "Chatsworth" included marling, liming, and crop rotations without the emphasis on milch cows and manuring noted at nearby "Shirley." Personal papers in this collection refer to plantation matters, farming, and slavery, including a letter of April 1833 relating an attempt to purchase a slave so as to unite his wife and him. In August and September of 1833, correspondence with an overseer notes an apparent mutiny among slaves at "Chatsworth." Personal papers also contain a wealth of family correspondence on subjects including courtship, marriage, illness, death, remarriage, parenting, and education. Correspondents in Virginia range from Tidewater to Piedmont; those in other states include Florida, Kentucky, and Louisiana. Legal papers contain contracts, deeds, wills, court warrants, depositions, and legal opinions, arranged chronologically by year. Financial papers contain bills and receipts, guardianship accounts, and canceled checks, arranged chronologically by year.

*N.B.* One container of miscellany including visiting cards, maps, surveyors' notes, newspaper clippings, notes, and essays was omitted from this microfilm project because of its purely tangential interest.

0000 Introductory Materials. 2 frames.

### **Personal Papers**

- 0001 Peter Shipwith Randolph, 1774. 4 frames.
- 0005 Peter Shipwith Randolph, 1782. 2 frames.
- 0007 Peter Shipwith Randolph, 1784. 4 frames.
- 0011 Peter Shipwith Randolph, 1785. 6 frames.
- 0017 Peter Shipwith Randolph, 1786. 6 frames.
- 0023 Peter Shipwith Randolph, 1787. 14 frames.
- 0037 Peter Shipwith Randolph, 1788. 4 frames.
- 0041 Peter Shipwith Randolph, 1789. 6 frames.

0047 Peter Shipwith Randolph, 1790. 4 frames.  
0051 Peter Shipwith Randolph, 1791. 9 frames.  
0060 Peter Shipwith Randolph, 1792. 4 frames.  
0064 Peter Shipwith Randolph, 1793. 25 frames.  
0089 Peter Shipwith Randolph, 1794. 6 frames.  
0095 Peter Shipwith Randolph, 1795. 21 frames.  
0116 Peter Shipwith Randolph, 1796. 10 frames.  
0126 Peter Shipwith Randolph, 1797. 6 frames.  
0132 Elizabeth Randolph, 1798. 6 frames.  
0138 Elizabeth Randolph, 1799. 20 frames.  
0158 Elizabeth Randolph, 1800. 36 frames.  
0194 Elizabeth (Randolph) Adams, 1801. 36 frames.  
0230 Elizabeth (Randolph) Adams, 1802. 20 frames.  
0250 Elizabeth (Randolph) Adams, 1803. 19 frames.  
0269 Elizabeth (Randolph) Adams, 1804. 23 frames.  
0292 Elizabeth (Randolph) Adams, 1805. 21 frames.  
0313 Elizabeth (Randolph) Adams, 1806. 14 frames.  
0327 Elizabeth (Randolph) Adams, 1807. 5 frames.  
0332 Elizabeth (Randolph) Adams, 1808. 15 frames.  
0347 William B. Randolph, 1809. 18 frames.  
0365 William B. Randolph, 1810. 20 frames.  
0385 William B. Randolph, 1811. 28 frames.  
0403 William B. Randolph, 1812. 23 frames.  
0426 William B. Randolph, 1813. 19 frames.  
0445 William B. Randolph, 1814. 27 frames.  
0472 William B. Randolph, 1815. 66 frames.  
0538 William B. Randolph, 1816. 29 frames.  
0567 William B. Randolph, 1817. 40 frames.  
0607 William B. Randolph, 1818. 26 frames.  
0633 William B. Randolph, 1819. 22 frames.  
0655 William B. Randolph, 1820. 21 frames.  
0676 William B. Randolph, 1821. 27 frames.  
0703 William B. Randolph, 1822. 50 frames.  
0753 William B. Randolph, 1823. 29 frames.  
0782 William B. Randolph, 1824. 20 frames.  
0802 William B. Randolph, 1825. 27 frames.  
0829 William B. Randolph, 1826. 25 frames.  
0854 William B. Randolph, 1827. 35 frames.  
0889 William B. Randolph, 1828. 63 frames.  
0952 William B. Randolph, 1829. 52 frames.

# Reel 3

## *William B. Randolph Papers cont.*

### **Personal Papers cont.**

- 0001 William B. Randolph, 1830. 42 frames.
- 0043 William B. Randolph, 1831. 13 frames.
- 0056 William B. Randolph, 1832. 15 frames.
- 0071 William B. Randolph, 1833. 32 frames.
- 0103 William B. Randolph, 1834. 23 frames.
- 0126 William B. Randolph, 1835. 13 frames.
- 0139 William B. Randolph, 1836. 10 frames.
- 0149 William B. Randolph, 1837. 14 frames.
- 0163 William B. Randolph, 1838. 24 frames.
- 0187 William B. Randolph, 1839. 51 frames.
- 0231 William B. Randolph, 1840. 18 frames.
- 0249 William B. Randolph, 1841. 19 frames.
- 0268 William B. Randolph, 1842. 40 frames.
- 0308 William B. Randolph, 1843. 36 frames.
- 0344 William B. Randolph, 1844. 28 frames.
- 0372 William B. Randolph, 1845. 19 frames.
- 0391 William B. Randolph, 1846. 55 frames.
- 0446 William B. Randolph, 1847. 49 frames.
- 0495 William B. Randolph, 1848. 31 frames.
- 0526 William B. Randolph, 1849. 26 frames.
- 0552 William B. Randolph, 1850. 38 frames.
- 0590 William B. Randolph, 1851. 24 frames.
- 0614 William B. Randolph, 1852. 19 frames.
- 0633 William B. Randolph, 1853. 11 frames.
- 0644 William B. Randolph, 1854. 11 frames.
- 0655 William B. Randolph, 1855. 22 frames.
- 0677 William B. Randolph, 1856. 12 frames.
- 0689 William B. Randolph, 1857. 8 frames.
- 0697 William B. Randolph, 1858. 4 frames.
- 0701 William B. Randolph, 1859. 21 frames.
- 0722 William B. Randolph, 1860. 15 frames.
- 0737 William B. Randolph, 1862. 6 frames.
- 0743 William B. Randolph, 1863. 2 frames.
- 0745 William B. Randolph, 1864. 4 frames.
- 0749 William B. Randolph, 1867. 10 frames.

- 0759 William B. Randolph, 1871. 2 frames.
- 0761 William B. Randolph, 1872. 5 frames.
- 0766 William B. Randolph, 1884. 1 frame.
- 0767 Peter Shipwith Randolph, N.D. 26 frames.
- 0793 William B. Randolph, N.D. 127 frames.

## Reel 4

### *William B. Randolph Papers cont.*

#### **Legal Papers**

- 0001 William Randolph, 1696. 2 frames.
- 0003 William Randolph, 1703. 2 frames.
- 0005 William Randolph, 1749. 2 frames.
- 0007 William Randolph, 1772. 8 frames.
- 0015 William Randolph, 1773. 2 frames.
- 0017 William Randolph, 1774. 2 frames.
- 0019 Estate of William Randolph, 1775. 5 frames.
- 0024 Estate of William Randolph, 1776. 7 frames.
- 0031 Estate of William Randolph, 1778. 2 frames.
- 0033 Estate of William Randolph, 1780. 2 frames.
- 0035 Peter Shipwith Randolph, 1787. 5 frames.
- 0040 Peter Shipwith Randolph, 1789. 3 frames.
- 0043 Peter Shipwith Randolph, 1791. 4 frames.
- 0047 Peter Shipwith Randolph, 1793. 8 frames.
- 0055 Peter Shipwith Randolph, 1794. 2 frames.
- 0057 Peter Shipwith Randolph, 1795. 16 frames.
- 0073 Peter Shipwith Randolph, 1796. 51 frames.
- 0124 Peter Shipwith Randolph, 1797. 6 frames.
- 0130 Elizabeth Randolph, 1798. 8 frames.
- 0138 Elizabeth Randolph, 1799. 5 frames.
- 0143 Elizabeth (Randolph) Adams, 1801. 2 frames.
- 0145 Elizabeth (Randolph) Adams, 1802. 2 frames.
- 0147 Elizabeth (Randolph) Adams, 1805. 6 frames.
- 0153 Elizabeth (Randolph) Adams, 1807. 4 frames.
- 0157 Elizabeth (Randolph) Adams, 1809. 9 frames.
- 0166 Elizabeth (Randolph) Adams, 1810. 8 frames.
- 0174 William B. Randolph, 1812. 3 frames.
- 0177 William B. Randolph, 1815. 5 frames.

- 0182 William B. Randolph, 1816. 6 frames.
- 0188 William B. Randolph, 1817. 2 frames.
- 0190 William B. Randolph, 1818. 26 frames.
- 0216 William B. Randolph, 1819. 11 frames.
- 0227 William B. Randolph, 1820. 20 frames.
- 0247 William B. Randolph, 1821. 6 frames.
- 0253 William B. Randolph, 1822. 18 frames.
- 0271 William B. Randolph, 1823. 9 frames.
- 0280 William B. Randolph, 1824. 12 frames.
- 0292 William B. Randolph, 1825. 8 frames.
- 0300 William B. Randolph, 1826. 6 frames.
- 0306 William B. Randolph, 1827. 6 frames.
- 0312 William B. Randolph, 1829. 4 frames.
- 0316 William B. Randolph, 1830. 6 frames.
- 0322 William B. Randolph, 1832. 12 frames.
- 0334 William B. Randolph, 1833. 33 frames.
- 0377 William B. Randolph, 1834. 19 frames.
- 0396 William B. Randolph, 1835. 46 frames.
- 0442 William B. Randolph, 1836. 4 frames.
- 0446 William B. Randolph, 1837. 2 frames.
- 0448 William B. Randolph, 1840. 2 frames.
- 0450 William B. Randolph, 1841. 2 frames.
- 0452 William B. Randolph, 1842. 2 frames.
- 0454 William B. Randolph, 1843. 2 frames.
- 0456 William B. Randolph, 1844. 1 frame.
- 0457 William B. Randolph, 1845. 2 frames.
- 0459 William B. Randolph, 1849. 9 frames.
- 0468 William B. Randolph, 1850. 10 frames.
- 0478 William B. Randolph, 1856. 3 frames.
- 0481 William B. Randolph, 1860. 2 frames.
- 0483 William B. Randolph, 1862. 2 frames.

## **Financial Papers**

- 0485 Estate of Peter Shipwith Randolph, 1767. 39 frames.
- 0524 William Randolph, 1769. 2 frames.
- 0526 William Randolph, 1771. 5 frames.
- 0531 William Randolph, 1773. 8 frames.
- 0539 William Randolph, 1774. 11 frames.
- 0550 Estate of William Randolph, 1775. 6 frames.

- 0556 Estate of William Randolph, 1776. 9 frames.
- 0565 Estate of William Randolph, 1777. 7 frames.
- 0572 Estate of William Randolph, 1778. 8 frames.
- 0580 Estate of William Randolph, 1779. 22 frames.
- 0602 Estate of William Randolph, 1780. 22 frames.
- 0624 Estate of William Randolph, 1781. 9 frames.
- 0633 Estate of William Randolph, 1782. 14 frames.
- 0647 Estate of William Randolph, 1783. 18 frames.
- 0665 Estate of William Randolph, 1784. 6 frames.
- 0673 Estate of William Randolph, 1785. 21 frames.
- 0694 Peter Shipwith Randolph, 1786. 37 frames.
- 0731 Peter Shipwith Randolph, 1787. 44 frames.
- 0775 Peter Shipwith Randolph, 1788. 36 frames.
- 0811 Peter Shipwith Randolph, 1789. 90 frames.
- 0901 Peter Shipwith Randolph, 1790. 42 frames.
- 0943 Peter Shipwith Randolph, 1791. 30 frames.
- 0973 Peter Shipwith Randolph, 1792. 40 frames.
- 1013 Peter Shipwith Randolph, 1793. 35 frames.
- 1048 Peter Shipwith Randolph, 1794. 24 frames.

## Reel 5

### *William B. Randolph Papers cont.*

#### **Financial Papers cont.**

- 0001 Peter Shipwith Randolph, 1795. 48 frames.
- 0049 Peter Shipwith Randolph, 1796. 79 frames.
- 0128 Peter Shipwith Randolph, 1797. 33 frames.
- 0161 Estate of Peter Shipwith Randolph, 1798. 31 frames.
- 0192 Estate of Peter Shipwith Randolph, 1799. 36 frames.
- 0228 Estate of Peter Shipwith Randolph, 1800. 19 frames.
- 0247 Estate of Peter Shipwith Randolph, 1801. 19 frames.
- 0266 Estate of Peter Shipwith Randolph, 1802. 21 frames.
- 0287 Estate of Peter Shipwith Randolph, 1803. 17 frames.
- 0304 Estate of Peter Shipwith Randolph, 1804. 23 frames.
- 0327 Estate of Peter Shipwith Randolph, 1805. 10 frames.
- 0337 Estate of Peter Shipwith Randolph, 1806. 32 frames.
- 0369 Estate of Peter Shipwith Randolph, 1807. 14 frames.
- 0383 William B. Randolph, 1808. 1 frame.



0384 William B. Randolph, 1812. 2 frames.  
0386 William B. Randolph, 1813. 2 frames.  
0388 William B. Randolph, 1814. 1 frame.  
0389 William B. Randolph, 1815. 42 frames.  
0431 William B. Randolph, 1816. 32 frames.  
0463 William B. Randolph, 1817. 32 frames.  
0495 William B. Randolph, 1818. 36 frames.  
0531 William B. Randolph, 1819. 47 frames.  
0578 William B. Randolph, 1820. 38 frames.  
0616 William B. Randolph, 1821. 43 frames.  
0663 William B. Randolph, 1822. 36 frames.  
0699 William B. Randolph, 1823. 41 frames.  
0740 William B. Randolph, 1824. 52 frames.  
0792 William B. Randolph, 1825. 40 frames.  
0832 William B. Randolph, 1826. 40 frames.  
0872 William B. Randolph, 1827. 43 frames.  
0915 William B. Randolph, 1828. 42 frames.  
0957 William B. Randolph, 1829. 29 frames.

## Reel 6

### *William B. Randolph Papers cont.*

#### *Financial Papers cont.*

0001 William B. Randolph, 1830. 46 frames.  
0047 William B. Randolph, 1831. 29 frames.  
0076 William B. Randolph, 1832. 31 frames.  
0107 William B. Randolph, 1833. 51 frames.  
0158 William B. Randolph, 1834. 30 frames.  
0188 William B. Randolph, 1835. 39 frames.  
0227 William B. Randolph, 1836. 47 frames.  
0274 William B. Randolph, 1837. 32 frames.  
0306 William B. Randolph, 1838. 30 frames.  
0336 William B. Randolph, 1839. 39 frames.  
0375 William B. Randolph, 1840. 33 frames.  
0408 William B. Randolph, 1841. 57 frames.  
0465 William B. Randolph, 1842. 50 frames.  
0515 William B. Randolph, 1843. 34 frames.  
0549 William B. Randolph, 1844. 42 frames.

- 0591 William B. Randolph, 1845. 43 frames.
- 0634 William B. Randolph, 1846. 46 frames.
- 0680 William B. Randolph, 1847. 35 frames.
- 0715 William B. Randolph, 1848. 49 frames.
- 0764 William B. Randolph, 1849. 51 frames.
- 0815 William B. Randolph, 1850. 53 frames.
- 0868 William B. Randolph, 1851. 63 frames.
- 0931 William B. Randolph, 1852. 43 frames.
- 0974 William B. Randolph, 1853. 46 frames.
- 1010 William B. Randolph, 1854. 59 frames.

## **Reel 7**

### ***William B. Randolph Papers cont.***

#### **Financial Papers cont.**

- 0001 William B. Randolph, 1855. 40 frames.
- 0041 William B. Randolph, 1856. 45 frames.
- 0086 William B. Randolph, 1857. 51 frames.
- 0137 William B. Randolph, 1858. 50 frames.
- 0187 William B. Randolph, 1859. 52 frames.
- 0239 William B. Randolph, 1860. 46 frames.
- 0285 William B. Randolph, 1861. 45 frames.
- 0335 William B. Randolph, 1862. 14 frames.
- 0349 William B. Randolph, 1863. 34 frames.
- 0383 William B. Randolph, 1864. 29 frames.
- 0412 William B. Randolph, 1865. 2 frames.
- 0414 William B. Randolph, 1867. 7 frames.
- 0421 William B. Randolph, 1869. 3 frames.

### ***Bruce Family Papers, 1792-1865, Charlotte County, Virginia***

Earliest entries in this collection concern James Bruce and James C. Bruce engaged in general merchandise in Halifax and Pittsylvania Counties. The bulk of this family's papers, however, relate to Charles Bruce, planter, of nearby Charlotte County, within 30 miles of the North Carolina border in central Virginia. This was prime tobacco and wheat land of which he held over 3,500 acres worked by 110 slaves in 1848. Plantation names noted include "Turnip Creek," "Turnip Creek Mill," "Branch Quarter," "Halifax," and "Staunton Hill." Cor-

respondents and business contacts ranged as far as New York and Philadelphia, but included nearby Halifax Court House, Lynchburg, and Richmond. Agricultural activities included the purchase of clover seed, guano, ploughs, and wheat fans along with sales. Slave materials, noted beside purchases and sales, included the distribution of blankets, cloth, and shoes to the families.

0424 Introductory Materials. 2 frames.

## **Papers**

- 0424 Bruce Family, 1792. 2 frames.
- 0426 Bruce Family, 1800. 2 frames.
- 0428 Bruce Family, 1802. 6 frames.
- 0433 Bruce Family, 1804. 7 frames.
- 0440 Bruce Family, 1807. 12 frames.
- 0452 Bruce Family, 1808. 8 frames.
- 0460 Bruce Family, 1810. 6 frames.
- 0466 Bruce Family, 1811. 2 frames.
- 0468 Bruce Family, 1812. 2 frames.
- 0470 Bruce Family, 1815. 14 frames.
- 0484 James Bruce, 1816. 10 frames.
- 0494 James Bruce, 1817. 12 frames.
- 0506 James Bruce, 1818. 14 frames.
- 0520 James Bruce, 1819. 18 frames.
- 0538 James Bruce, 1820. 10 frames.
- 0548 James Bruce, 1821. 13 frames.
- 0561 James Bruce, 1822. 16 frames.
- 0577 James Bruce, 1823. 10 frames.
- 0587 James Bruce, 1824. 5 frames.
- 0592 James Bruce, 1825. 17 frames.
- 0609 James Bruce, 1826. 3 frames.
- 0612 James Bruce, 1827. 9 frames.
- 0621 James Bruce, 1828. 6 frames.
- 0627 James Bruce, 1829. 2 frames.
- 0629 James Bruce, 1830. 6 frames.
- 0635 James Bruce, 1831. 2 frames.
- 0637 James Bruce, 1832. 1 frame.
- 0638 James Bruce, 1833. 4 frames.
- 0642 James Bruce, 1835. 3 frames.
- 0645 James Bruce, 1836. 3 frames.

0648 James Bruce, 1837. 2 frames.  
0650 James Bruce, 1838. 4 frames.  
0654 James Bruce, 1839. 2 frames.  
0656 Bruce Family, 1843. 6 frames.  
0662 Bruce Family, 1845. 3 frames.  
0665 Bruce Family, 1846. 2 frames.  
0667 Bruce Family, 1847. 23 frames.  
0690 Charles Bruce, 1848. 38 frames.  
0728 Charles Bruce, 1849. 71 frames.  
0799 Charles Bruce, 1850. 63 frames.  
0862 Charles Bruce, 1851. 56 frames.  
0918 Charles Bruce, 1852. 16 frames.

## Reel 8

### *Bruce Family Papers cont.*

#### **Papers cont.**

0001 Charles Bruce, 1852. 41 frames.  
0042 Charles Bruce, 1853. 55 frames.  
0097 Charles Bruce, 1854. 67 frames.  
0164 Charles Bruce, 1855. 79 frames.  
0243 Charles Bruce, 1856. 115 frames.  
0358 Charles Bruce, 1857. 67 frames.  
0425 Charles Bruce, 1858. 128 frames.  
0553 Charles Bruce, 1859. 97 frames.  
0650 Charles Bruce, 1860. 86 frames.  
0736 Charles Bruce, 1861. 35 frames.  
0761 Charles Bruce, 1862. 27 frames.  
0788 Charles Bruce, 1863. 14 frames.  
0802 Charles Bruce, 1864. 17 frames.  
0819 Charles Bruce, 1865. 17 frames.  
0836 Elvira Bruce, 1843. 1 frame.  
0837 Elvira Bruce, 1856. 3 frames.  
0840 Elvira Bruce, 1857. 18 frames.  
0858 Estate of Elvira Bruce, 1858. 37 frames.  
0895 Estate of Elvira Bruce, 1859. 8 frames.  
0903 Estate of Elvira Bruce, 1860. 8 frames.  
0911 Charles Bruce, 1865. 5 frames.



**Series C**  
**Selections from Holdings of  
the Library of Congress**

**Part 2:**  
**Alabama, Georgia, and  
South Carolina**

## NOTE ON SOURCES

The original documents reproduced in this micropublication are housed at the Library of Congress, Manuscripts Division, James Madison Building, Washington, D.C. The map of Alabama reproduced in the introductory materials for the Turner Reavis Account Book is that of S. Augustus Mitchell, 1848. The map of Georgia reproduced among the introductory materials of the Duncan Clinch Letterbook and Slave List is that of H.S. Tanner, 1833. The map of South Carolina reproduced among the introductory materials of the remainder of these collections is that of Anthony Finley, 1824, and the maps of individual districts are from Robert Mills, *Atlas of South Carolina*, 1825.

## EDITORIAL NOTE

The papers in these collections were microfilmed in their entirety, with the exceptions as noted in the Duncan Clinch Letterbooks, the Edward Frost Papers, and the Franklin Elmore Papers. For additional materials on Franklin Elmore, researchers may wish to consult another UPA micropublication, *Records of Ante-Bellum Southern Plantations, Series A, Selections from the South Caroliniana Library, University of South Carolina*.

# TABLE OF CONTENTS

## Reel Index

### Reel 1

Turner Reavis Account Book .....	17
Duncan Clinch Letterbook and Slave List .....	17
"Greenwood" Plantation Journal .....	18
Stephen Doar Account Books .....	18
Edward Frost Papers .....	19

### Reel 2

Edward Frost Papers cont. ....	20
Franklin Elmore Papers .....	21

### Reel 3

Franklin Elmore Papers cont. ....	22
-----------------------------------	----

### Reel 4

Franklin Elmore Papers cont. ....	22
-----------------------------------	----

### Reel 5

Franklin Elmore Papers cont. ....	23
-----------------------------------	----





# REEL INDEX

## Reel 1

### ***Turner Reavis Account Book, 1842-1890, Gainesville, Alabama***

Turner Reavis (1812-1872) was born in Wake County, North Carolina, and moved to Alabama in 1840 where he pursued a career in law, published the *Alabama Digest of Laws* in 1847, and served as state senator from 1861-1865. This account book details "Cedar Bluff" Plantation near Gainesville in Sumter County, central Alabama near Mississippi, comprising 1,592 acres and worked by 31 of Reavis's own slaves and 15 hired hands. There is an alphabetical index in the front of the volume followed by entries denoting accounts in Mobile, Montgomery, DeKalb, and Gainesville for the purchase or sale of cotton, equipment and supplies, mules and slaves. Other records more broadly relate to the plantation, "Cedar Bluff" Farm, and Negro clothing. Accounts with freedmen begin in 1865. It is not known by whom the few entries of 1873 and 1890 were made.

0000 Introductory Materials. 2 frames.

0000 Judge Turner Reavis, Account Book, 1842-1890. 79 frames.

0079 Judge Turner Reavis, Biographical Note. 2 frames. [W.J. Boles, *This Date in Alabama History*, June 18, 1942.]

### ***Duncan Clinch Letterbook, 1834-1836, and Slave List, 1859, Camden County, Georgia***

The letterbook relates to Clinch's activities as brevet brigadier general, U.S. Army, colonel 4th Regiment of Infantry during operations among the Seminole Indians from 1834-1836. Letters concerning the transportation and subjugation of these Indians reflect Clinch's concern that Negroes were joining the Seminoles and his fear that this spirit would extend to the plantations. The slave list, 1859, was taken at "The Refuge," Camden County, in the extreme

southeastern corner of Georgia. Listing over 100 individuals by age, occupation, and family, this list also included 196 oxen and cattle and 97 sheep.

*N.B.* Two volumes of letterbooks were omitted from this micropublication. One volume is a copy of the letterbook included and the other is of an entirely military character.

0081 Introductory Materials. 2 frames.

0081 Duncan Clinch, Letterbook, Fort King, Florida, 1834–1836. 53 frames.

0134 Duncan Clinch, Slave List, Camden County, Georgia, 1859. 57 frames.

### ***“Greenwood” Plantation Journal, 1858–1864, Beaufort District, South Carolina***

This journal was kept by Mr. Gregory, a cotton planter in Prince William Parish, Beaufort District, on the Combahee River in coastal South Carolina near Georgia. Crops included corn, potatoes, and vegetables in addition to 200 acres of cotton. Livestock numbered 176 sheep and 68 head of cattle. Cultivation notes include composting and manuring techniques with annual summaries. Slave deaths and illnesses included diphtheria and measles outbreaks among his 100 hands. Interspersed with weather and crop notes are Gregory's increasing concern with secession, the war, and his realization that win or lose, southern institutions, including slavery, would never be the same.

0161 Introductory Materials. 4 frames.

0161 Mr. Gregory, “Greenwood” Plantation Journal, 1858–1864. 40 frames.

### ***Stephen Doar Account Books, St. James Parish, 1851–1862, Charleston District, South Carolina***

Stephen Doar listed 235 slaves in St. James Parish, Santee, Charleston District, and 107 slaves in Winyaw Parish, Georgetown District, in the 1860 census. The account books in the present collection record the sale of rice and income Doar derived from the administration of the estate of E.M. Doar, as well as two ships which brought him income, a schooner, *L.C. Holmes*, and a sloop, *Mary Louisa*. Expenses, including overseers' and captains' wages, also detail the purchase of corn in North Carolina and New York. Slave sales and purchases are noted, along with land transactions and the purchase of items including mill stones, bacon, molasses, hardware, and medicines.

- 0201 Introductory Materials. 3 frames.
- 0201 Estate of E.M. Doar, Deceased, in Account with Stephen D. Doar, Administrator, 1851-1862. 26 frames.
- 0227 Stephen Doar, Esquire, Account Book, 1851-1862. 49 frames.

***Edward Frost Papers, 1817-1865,  
Charleston and Georgetown Districts, South Carolina***

Judge Frost was an attorney residing in Charleston, but amassing a considerable estate in his own right through the settlement of several large estates. He owned a cotton plantation in Darlington District, north central South Carolina, which was run by an overseer, whose correspondence appears among the family papers. A tax return for 1837, appearing in Reel 2, frame 198, listed Edward Frost and wife as owning 765 acres and 52 slaves in Prince George, Winyaw Parish and 395 acres and 25 slaves in St. Andrews, Winyaw Parish, all in Georgetown District, the heart of South Carolina rice country. Frost also owned several houses and lots in Charleston. The bulk of the collection relates to Frost's role as the administrator of the Seaman Deas estate in Georgetown District and of the Thomas Horry estate in St. James, Santee Parish, Charleston District. These were both large rice plantations with hundreds of slaves and numerous tracts of land. Extensive slave lists provide occupational, age and familial data in addition to prices.

*N.B.* The following files were omitted from this collection in order to save space, as these files were not relevant to plantations:

Commissions and Appointments, 1823-1843; Political Papers, 1830-1832, 1861; Correspondence with Captain Shubrich, 1837-1838; Correspondence with Mary M. Smith French, 1837-1851; Blake Estate, 1802-1857; Blake Estate, Account Book; Stann Estate, 1861-1864; Stann Estate Account Book, 1858-1861; Financial Papers, Pass Book, and Bank Book.

- 0276 Introductory Materials. 4 frames.

**Family Papers**

- 0276 Edward Frost, Correspondence, Henry Marston, 1837-1851. 58 frames.
- 0334 Edward Frost, Correspondence, Frost's Wife, Son (Tom), and Overseer, 1854, 1861-1865 [Plantation Operations]. 54 frames.
- 0388 Edward Frost, Correspondence, Personal and Business, 1860-1864. 20 frames.

## **Estate Papers**

- 0408 Edward Frost, Seaman Deas Estate, 1848-1857. 40 frames.
- 0448 Edward Frost, Horry Estate, Will and Settlement of Estate, 1817-1851. 100 frames.
- 0548 Edward Frost, Horry Estate, Estate Book, 1827-1835. 17 frames.
- 0565 Edward Frost, Horry Estate, Schedule of Estate, Real and Personal, N.D. 10 frames.
- 0575 Edward Frost, Horry Estate, Accounts and Vouchers, Books, Schedule of Estate, 1835-1858. 24 frames.
- 0599 Edward Frost, Horry Estate, Accounts and Vouchers, Books, Account Book, 1835-1842. 19 frames.
- 0618 Edward Frost, Horry Estate, Accounts and Vouchers, Books, Account Book, 1836-1842. 28 frames.
- 0646 Edward Frost, Horry Estate, Accounts and Vouchers, Books, Plantation Book, 1837-1844. 14 frames.
- 0660 Edward Frost, Horry Estate, Accounts and Vouchers, Books, Account Book, 1842-1844. 10 frames.
- 0670 Edward Frost, Horry Estate, Accounts and Vouchers, Books, Account Book, 1852-1859. 33 frames.

## **Reel 2**

### ***Edward Frost Papers cont.***

#### **Estate Papers cont.**

- 0000 Edward Frost, Horry Estate, Ledger Book, 1853. 133 frames.

#### **Financial Papers**

- 0133 Edward Frost, Account Books, Cotton Book, 1852-1860. 16 frames.
- 0149 Edward Frost, Account Books, Cash and Sundry Accounts, 1836-1842. 50 frames.
- 0199 Edward Frost, Account Books, Account Book, 1828-1831. 23 frames.
- 0222 Edward Frost, Account Books, Settlement Accounts, 1830. 3 frames.
- 0225 Edward Frost, Account Books, Cash Book, 1831-1836. 37 frames.
- 0263 Edward Frost, Account Books, Account Book, 1830-1835. 11 frames.
- 0274 Edward Frost, Bills of Sale for Slaves, 1827-1857. 31 frames.
- 0305 Edward Frost, Cotton and Rice Invoices, 1836-1840. 13 frames.

## ***Franklin Elmore Papers, 1795–1858, Spartanburg and York Districts, South Carolina***

Franklin Harper Elmore (1799–1850) attended South Carolina College; studied law in Columbia, South Carolina; was admitted to the Bar there in 1821; acted as solicitor of the southern circuit from 1822–1836; was elected U.S. senator in 1836; was elected president of the State Bank in 1839; and shortly before his death was appointed to fill the unexpired term of John C. Calhoun in the U.S. Senate. The papers in this collection, while containing some materials on South Carolina politics, are mostly devoted to banking affairs and to southern manufacturing. His business correspondence demonstrates Elmore's interest not only in industrial and railroad expansion, but also in the development of regional agriculture. He was actively involved as a trustee of the Nesbitt Manufacturing Company, an iron forge and iron implements manufacturer in Spartanburg District, which employed slave labor, many of whom were hired from plantations. A letter of December 29, 1842, relates to Elmore that a non-bearing woman field hand was willing to leave her husband to become a ladies' maid. Items of special interest in these papers include minutes, financial and sale reports of the Nesbitt Manufacturing Company, scattered legal materials relating to the Bank of South Carolina, and slave lists giving names, valuation, and occupation. Prominent or frequent correspondents in the collection include Nicholas Biddle, James Bogardus, Pierce Mason Butler, John C. Calhoun, B.L. Earle, F.N. Gilman, Jr., James Hamilton, Augustus B. Longstreet, Francis Wilkinson Pickens, J.B. Quimby, Robert Barnwell Rhett, W.F. Saussure, and James H. Taylor.

*N.B.* A container of miscellany, 1835–1850, and N.D., including Business Correspondence material relating to the rebuilding of Charleston, 1848–1849, and a journal, 1848–1849, concerning attacks on the Bank of South Carolina, was omitted in order to save space, as these materials were not relevant to plantations. See also Series A, Part 2, Franklin Harper Elmore Papers, from the Holdings of the South Caroliniana Library.

0318 Introductory Materials. 4 frames.

### **Business Correspondence**

0322 Franklin Elmore, 1795. 5 frames.

0327 Franklin Elmore, 1814. 2 frames.

0329 Franklin Elmore, 1818. 8 frames.

0337 Franklin Elmore, 1822. 9 frames.

- 0346 Franklin Elmore, 1823. 5 frames.
- 0351 Franklin Elmore, 1824. 19 frames.
- 0370 Franklin Elmore, 1825. 20 frames.
- 0390 Franklin Elmore, 1826. 20 frames.
- 0410 Franklin Elmore, 1827. 32 frames.
- 0442 Franklin Elmore, 1828. 31 frames.
- 0473 Franklin Elmore, 1829. 37 frames.
- 0510 Franklin Elmore, 1830. 35 frames.
- 0545 Franklin Elmore, 1831. 45 frames.
- 0590 Franklin Elmore, 1832. 84 frames.
- 0674 Franklin Elmore, 1833. 31 frames.
- 0705 Franklin Elmore, 1834. 54 frames.
- 0759 Franklin Elmore, 1835. 47 frames.

## **Reel 3**

### ***Franklin Elmore Papers cont.***

#### **Business Correspondence cont.**

- 0001 Franklin Elmore, 1836. 55 frames.
- 0056 Franklin Elmore, 1837. 121 frames.
- 0177 Franklin Elmore, 1838. 126 frames.
- 0303 Franklin Elmore, 1839. 82 frames.
- 0385 Franklin Elmore, 1840. 85 frames.
- 0470 Franklin Elmore, 1841. 71 frames.
- 0541 Franklin Elmore, 1842. 69 frames.
- 0610 Franklin Elmore, 1843. 59 frames.
- 0669 Franklin Elmore, 1844. 71 frames.
- 0740 Franklin Elmore, 1845. 34 frames.
- 0774 Franklin Elmore, 1846. 109 frames.
- 0883 Franklin Elmore, 1847. 44 frames.

## **Reel 4**

### ***Franklin Elmore Papers cont.***

#### **Business Correspondence cont.**

- 0001 Franklin Elmore, 1847 cont. 113 frames.
- 0114 Franklin Elmore, 1848. 64 frames.

- 0178 Franklin Elmore, 1849. 31 frames.
- 0209 Franklin Elmore, 1850. 33 frames.
- 0244 Estate of Franklin Elmore, 1853. 2 frames.
- 0244 Estate of Franklin Elmore, 1858. 3 frames.
- 0247 Franklin Elmore, N.D. 399 frames.

## Reel 5

### *Franklin Elmore Papers cont.*

#### **Bills and Receipts**

- 0001 Franklin Elmore, 1820. 5 frames.
- 0006 Franklin Elmore, 1823. 7 frames.
- 0013 Franklin Elmore, 1824. 1 frame.
- 0014 Franklin Elmore, 1825. 4 frames.
- 0018 Franklin Elmore, 1826. 11 frames.
- 0029 Franklin Elmore, 1827. 14 frames.
- 0043 Franklin Elmore, 1828. 17 frames.
- 0060 Franklin Elmore, 1829. 17 frames.
- 0077 Franklin Elmore, 1830. 24 frames.
- 0101 Franklin Elmore, 1831. 15 frames.
- 0116 Franklin Elmore, 1832. 20 frames.
- 0136 Franklin Elmore, 1833. 34 frames.
- 0170 Franklin Elmore, 1834. 44 frames.
- 0214 Franklin Elmore, 1835. 18 frames.
- 0232 Franklin Elmore, 1836. 27 frames.
- 0259 Franklin Elmore, 1837. 88 frames.
- 0347 Franklin Elmore, 1838. 169 frames.
- 0516 Franklin Elmore, 1839. 69 frames.
- 0585 Franklin Elmore, 1840. 100 frames.
- 0685 Franklin Elmore, 1841. 104 frames.
- 0789 Franklin Elmore, 1842. 107 frames.
- 0896 Franklin Elmore, 1843. 107 frames.
- 1003 Franklin Elmore, 1844. 173 frames.
- 1176 Franklin Elmore, 1845. 46 frames.
- 1232 Franklin Elmore, 1846. 95 frames.
- 1327 Franklin Elmore, 1847. 111 frames.
- 1438 Franklin Elmore, 1848. 68 frames.
- 1506 Franklin Elmore, 1849. 101 frames.



- 1607 Franklin Elmore, 1850. 1 frame.
- 1608 Estate of Franklin Elmore, 1852. 9 frames.
- 1617 Estate of Franklin Elmore, 1853. 7 frames.
- 1624 Estate of Franklin Elmore, 1856. 1 frame.
- 1625 Estate of Franklin Elmore, 1858. 3 frames.
- 1628 Estate of Franklin Elmore, 1863. 27 frames.
- 1655 Estate of Franklin Elmore, N.D. 167 frames.

# **RECORDS OF ANTE-BELLUM SOUTHERN PLANTATIONS**

**FROM THE REVOLUTION THROUGH  
THE CIVIL WAR**

**SERIES A. Selections from the South Caroliniana Library,  
University of South Carolina**

**SERIES B. Selections from the South Carolina Historical  
Society**

**SERIES C. Selections from the Library of Congress**

**SERIES D. Selections from the Maryland Historical Society**

**SERIES E. Selections from the University of Virginia Library**

**SERIES F. Selections from Duke University**

**UNIVERSITY PUBLICATIONS OF AMERICA**