

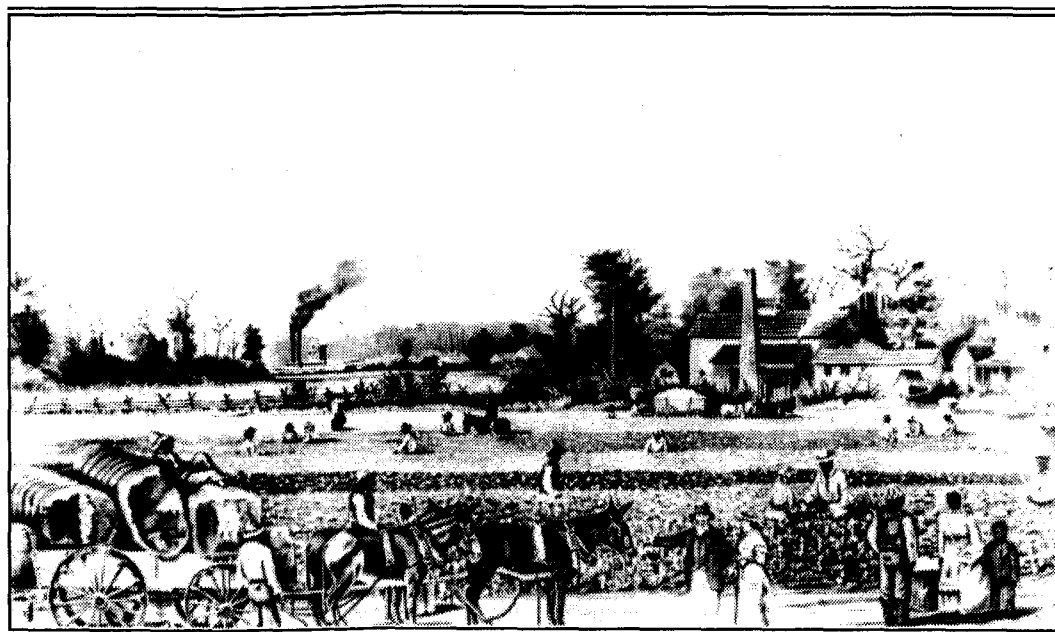
*A Guide to the Microfilm Edition of*

**RECORDS OF ANTE-BELLUM  
SOUTHERN PLANTATIONS  
FROM THE REVOLUTION THROUGH  
THE CIVIL WAR**

**Series I**

**Selections from the  
Louisiana and Lower Mississippi Valley Collections,  
Louisiana State University Libraries**

**Part 6:  
Weeks Family Collection**



**UNIVERSITY PUBLICATIONS OF AMERICA**

Cover illustration by W. A. Walker.  
Original at the South Caroliniana Library, Columbia, South Carolina.

*A Guide to the Microfilm Edition of*

# **Records of Ante-Bellum Southern Plantations from the Revolution through the Civil War**

**General Editor: Kenneth M. Stamp**

## **Series I**

**Selections from the  
Louisiana and Lower Mississippi Valley Collections,  
Louisiana State University Libraries**

### **Part 6: Weeks Family Collection**

**Associate Editor and Guide Compiled by  
Martin Schipper**

**A microfilm project of  
UNIVERSITY PUBLICATIONS OF AMERICA  
*An Imprint of CIS*  
4520 East-West Highway • Bethesda, MD 20814-3389**

## Library of Congress Cataloging-in-Publication Data

Records of ante-bellum southern plantations from the  
Revolution through the Civil War [microform]

Accompanied by printed reel guides, compiled by  
Martin Schipper.

Contents: ser. A. Selections from the South  
Caroliniana Library, University of South Carolina  
(2 pts.)—[etc.]—ser. I. Selections from the Louisiana  
and Lower Mississippi Valley Collections, Louisiana  
State University Libraries—[etc.]—ser. M.  
Selections from the Virginia Historical Society.

1. Southern States—History—1775–1865—Sources.  
2. Slave records—Southern States. 3. Plantation  
owners—Southern States—Archives. 4. Southern States—  
Genealogy. 5. Plantation life—Southern States—  
History—19th century—Sources. I. Stampp, Kenneth M.  
(Kenneth Milton) II. Boehm, Randolph. III. Schipper,  
Martin Paul. IV. South Caroliniana Library. V. South  
Carolina Historical Society. VI. Library of Congress.  
Manuscript Division. VII. Maryland Historical Society.  
[F213] 975 86-892341  
ISBN 1-55655-680-2 (microfilm : ser. I, pt. 6)

# TABLE OF CONTENTS

<b>Introduction</b> .....	v
<b>Note on Sources</b> .....	vii
<b>Editorial Note</b> .....	vii
<b>Reel Index</b>	
<b>Reel 1</b>	
Introductory Materials .....	4
Papers .....	4
<b>Reels 2–18</b>	
Papers cont. ....	4
<b>Reel 19</b>	
Papers cont. ....	14
Volumes .....	15
<b>Reel 20</b>	
Volumes cont. ....	16
Omissions .....	16



# INTRODUCTION

The impact of the ante-bellum southern plantations on the lives of their black and white inhabitants, as well as on the political, economic, and cultural life of the South as a whole, is one of the most fascinating and controversial problems of present-day American historical research. Depending upon the labor of slaves who constituted the great majority of the American black population, the plantations were both homes and business enterprises for a white, southern elite. They were the largest, the most commercialized, and on the whole, the most efficient and specialized agricultural enterprises of their day, producing the bulk of the South's staple crops of tobacco, cotton, sugar, rice, and hemp. Their proprietors were entrepreneurs who aspired to and sometimes, after a generation or two, achieved the status of a cultivated landed aristocracy. Many distinguished themselves not only in agriculture but in the professions, in the military, in government service, and in scientific and cultural endeavors.

Planters ambitious to augment their wealth, together with their black slaves, were an important driving force in the economic and political development of new territories and states in the Southwest. Their commodities accounted for more than half the nation's exports, and the plantations themselves were important markets for the products of northern industry. In short, they played a crucial role in the development of a national market economy.

The plantations of the Old South, the white families who owned, operated, and lived on them, and the blacks who toiled on them as slaves for more than two centuries have been the subjects of numerous historical studies since the pioneering work of Ulrich B. Phillips in the early twentieth century. The literature, highly controversial, has focused on questions such as the evolution and nature of the planter class and its role in shaping the white South's economy, culture, and values; the conditions experienced by American blacks in slavery; the impact of the "peculiar institution" on their personalities and the degree to which a distinct Afro-American culture developed among them; and, finally, the sources of the tension between the proslavery interests of the South and the "free labor" interests of the North that culminated in secession and civil war.

Research materials are plentiful. Census returns and other government documents, newspapers and periodicals, travelers' accounts, memoirs and autobiographies, and an abundance of polemical literature have much to tell historians about life on ante-bellum plantations. The autobiographies of former slaves, several twentieth-century oral history collections, and a rich record of songs and folklore are significant sources for the black experience in slavery. All the historical literature, however, from Phillips to the most recent studies, has relied heavily on the enormous collections of manuscript plantation records that survive in research libraries scattered throughout the South. These manuscripts consist of business records, account books, slave lists, overseers' reports, diaries, private letters exchanged among family members and friends, and even an occasional letter written by a literate slave. They come mostly from the larger tobacco, cotton, sugar, and rice plantations, but a significant number survive from the more modest estates and smaller slaveholdings whose economic operations tended to be less specialized.

Plantation records reveal nearly every aspect of plantation life. Not only business operations and day-to-day labor routines, but family affairs, the roles of women, racial attitudes, relations between masters and slaves, social and cultural life, the values shared by members of the planter class, and the tensions and anxieties that were inseparable from a slave society are all revealed with a fullness and candor unmatched by any of the other available sources. Moreover, these records are immensely valuable for studies of black slavery. Needless to say, since they were compiled by

members of the white master class, they provide little direct evidence of the inner feelings and private lives of the slave population. But they are the best sources of information about the care and treatment of slaves, about problems in the management of slave labor, and about forms of slave resistance short of open rebellion. They also tell us much about the behavior of slaves, from which historians can at least draw inferences about the impact of slavery on the minds and personalities of its black victims.

Deposited in southern state archives and in the libraries of many southern universities and historical societies, significantly more plantation records have become available in recent decades. Our publication is designed to assist scholars in their use by offering for the first time an ample selection of the most important materials in a single microfilm collection. Ultimately it will cover each geographical area in which the plantation flourished, with additions of approximately four new collections annually. A special effort is being made to offer the rarer records of the smaller slaveholders and to include the equally rare records of the plantations in the last quarter of the eighteenth century; however, the documentation is most abundant for the operations of the larger plantations in the period between the War of 1812 and the Civil War, and their records will constitute the bulk of our publication.

**Kenneth M. Stampp**  
**Professor Emeritus**  
**University of California at Berkeley**



## NOTE ON SOURCES

The David Weeks and Family Papers (Mss. 528, 605), 1782–1957, microfilmed, in part, in this edition is a holding of the Louisiana and Lower Mississippi Valley Collections, Hill Memorial Library, Louisiana State University Libraries, Baton Rouge, Louisiana 70803-3300. The description of the collection provided in this user guide is adapted from inventories and indexes compiled by the Louisiana State University Libraries. The inventories and indexes are included among the introductory materials appearing on the microfilm at the beginning of the collection.

The Weeks plantation, Shadows on the Teche, is a nationally recognized historic site. Its mailing address is Shadows on the Teche, 371 East Main St., New Iberia, Louisiana 70560.

Historical maps, microfilmed among the introductory materials, are courtesy of the Map Collection of the Academic Affairs Library of the University of North Carolina at Chapel Hill. Maps consulted include:

Thomas G. Bradford, *Comprehensive Atlas*, 1835.

## EDITORIAL NOTE

The Reel Index for this edition provides the user with a précis of the collections included. Each précis gives information on family history and many business and personal activities documented in the collection. Omissions from collections are noted in the user guide and on the microfilm.

Following the précis, the Reel Index itemizes each file folder and manuscript volume. The four-digit number to the left of each entry indicates the frame number at which a particular folder begins.

# REEL INDEX

## *David Weeks and Family Papers (Mss. 528, 605), 1782–1957, Iberia Parish, Louisiana; also Mississippi*

### **Biographical Note**

David Weeks, a member of a prominent Louisiana family, inherited considerable land and slaves from his father, Alfred. David married Mary Clara Conrad, also a member of a prominent Louisiana family. David built a magnificent plantation home, Shadows on the Teche, which was finished shortly before his death in 1834. Correspondence from a far-flung family combines business and personal matters. David's sister, Rachel (Weeks) O'Connor, wrote long letters to her brother and sister-in-law from Evergreen Plantation, near St. Francisville. Her commentaries as a widowed plantation mistress on debt, local news, slave conditions, and troubles with overseers are interspersed with family happenings. A sugar plantation in St. Mary Parish owned among brothers-in-law David Weeks, F. D. Conrad, Charles M. Conrad, and William Taylor Palfrey is charted in family letters and regular overseers' correspondence revealing seasons of weather and disease among crops and residents. Slave clothing, diet, family life, health, insurrections, rebellions, relations with overseers, and work regimens are documented.

Children of David and Mary Weeks, including Frances, William, Alfred, Harriet, Charles, and David, wrote concerning education, social life, and travel in Louisiana and on the eastern seaboard. New Orleans amusements and society are chronicled over time. Duels brought bloodshed in the 1820s, 1830s, and 1840s, as Charles M. Conrad killed one man and William F. Weeks was wounded by another.

Mary Weeks married U.S. Representative John Moore in 1841. Personal correspondence of the Moores depicts plantation life in Louisiana until their deaths in the 1860s. Political papers of John Moore reflect his involvement in many of the great debates and internal improvement projects of the era. William F. Weeks and Alfred C. Weeks formed a series of partnerships with the Moores for the management of plantations at Franklin, New Iberia, Grand Cote, and Cypremort, Louisiana. Business items include agreements, letters from factors, reports from overseers, and sales reports.

During the federal occupation of Louisiana in the Civil War, family members moved to Texas with their slaves. The slaves hauled supplies for the Confederate government, grew crops for their owners, or were hired out to farmers or merchants in Texas. Petitions by slaveowners concern slaves who ran away or who died while impressed by the army. Labor contracts with freedmen and letters relating the destruction of various

Louisiana estates reveal the adjustments and difficulties faced by plantation families at war's end.

### **Description of the Collection**

This collection includes papers and volumes of the Weeks family and the related Conrad, Moore, and Gibson families of New Iberia and southern Louisiana. In addition to depicting sugar plantation economy, the collection also treats such matters as ante-bellum cotton planting, railroad building, state and national political and educational institutions, and war and rehabilitation problems.

### **Papers**

The papers from 1800 to 1819 consist of letters and documents of the Weeks and Conrad families, including William Weeks; David Weeks, his son; and Mary Clara (Conrad) Weeks, wife of David. Examples include slave sales, attestations of surveys, business papers, and documents relative to the settlement of the estates of Charles Thruston and William Weeks.

During the decade of the 1820s the family correspondence increased. The first of the Rachel (Weeks) O'Connor letters to David and Mary Weeks date from 1823. Writing from a plantation near St. Francisville, owned by David, Rachel combines family and business affairs, and her commentaries upon local news, slave conditions, and troubles with overseers are interspersed with family happenings. These letters continue until her death in 1846. Alfred, Francis, Frederick, and Charles Conrad are the authors of many letters that touch on such topics as their education, various occupations, and the establishment of their homes. This correspondence continues with slight diminution until their deaths in the latter half of the century. The letters of Charles M. Conrad, U.S. senator (1842–1843) and secretary of war (1850–1853), concern his schooling, 1817–1821, and the period immediately following, with an occasional letter until his death in 1878.

Letters of the 1820s are concerned mainly with the operation of sugar and cotton plantations and the relations with factors and merchants including John & William Palfrey, Flower & Faulkner, and Laurent Millaudon. Other papers include political letters of John Moore, member of the Louisiana legislature.

Letters of the 1830s treat similar subjects and also include horse racing in the Attakapas region; a series of letters from the children at school; letters, 1839–1840, of John Merriman, overseer of the Grand Cote Plantation; and reports of John Linton and Lambeth and Thompson, New Orleans factors. David Weeks died in 1834, and his will indicates the disposition of his property among the children, Frances, William, Alfred, Harriet, Charles, and David.

In the early part of the 1840s, the political correspondence of John Moore, Whig member of the U.S. House of Representatives, comprises a large portion of the papers. Moore married Mary Weeks in 1841, and some letters of the 1841–1843 period are addressed to the couple at Washington. The education of the children in Virginia and District of Columbia schools provides another source of the personal correspondence.

There are also several letters of Tobias Gibson to his son, Randall Lee Gibson, at Yale University.

Toward the end of the decade there is a decrease in the personal and an increase in the business material, which includes letters and reports of John Hall and Adams and Mitchell, commission merchants. The management of the plantations of Moore and Weeks at Franklin, New Iberia, Grand Cote, and Cypremort constitutes the content of the commercial material. W. F. Weeks, Alfred C. Weeks, and Mary C. Moore formed a partnership for the management of the Grant Cote Plantation in 1847 under the name of W. F. Weeks & Co., the beginning of a long series of contracts of partnership companies among the members of the Weeks and Moore families.

The election of Moore to Congress again in 1851 is illustrated by political material including petitions, letters of introduction, campaign letters, and congratulatory messages. Papers of an official nature of the 1851–1853 period include estimates for railroads; a circular, 28 July 1852, of a convention at Shreveport proposing a railroad to California; a project for the clearance of the Red River raft; appointments; and pensions and levees. Correspondents of the period include A. D. Roman, Joseph Walker, Thomas Curry, W. D. [otherwise unidentified], N. M. Prescott, and John Ray.

The commercial papers of the decade include reports of Hall and Rodd, Miles Adams & Co., Darby and Tremoulet, and A. Miltenberger, factors; letters of the firm Palfrey and Weeks; a partnership agreement with Julius A. Johnson, 1856, for the management of Moore's Plantation; and in 1859 the beginning of the correspondence of William Lourd, overseer, a file that lasts until 1865. The organization of the New Orleans, Opelousas, and Great Western Railroad in 1851, its construction, and the election of Moore as a member of the board of directors were events that gave rise to comments in personal and business letters of the period; a report of the railroad, 2 June 1853; a report by G. W. R. Bayley, chief engineer, 18 June 1856; and an extract of a contract, 13 November 1856, with Cornelius Vanderbilt for a combination of a railroad and steamer service between Louisiana and Texas are also included.

During the war Moore served as a member of the state legislature, although there are few items and references to political affairs until the latter years of the war when the government was forced to move to northern Louisiana. Because of the federal invasion, several members of the family moved to Texas. C. C. Weeks was engaged in hauling supplies for the Confederate government, while W. F. Weeks, Alfred C. Weeks, John Leigh, and Thomas Weightman took their slaves with them and either began growing new crops or hiring their slaves out to other farmers or merchants. Other items of the period include military exemptions of William Lourd and Lewis Moore as overseers, petitions for compensation of slaves who were lost or who died while impressed by the army, and political letters of John Moore from New Iberia, Mansfield, Shreveport, and Longstreet, Louisiana. The year 1863 marks a decrease in the volume of personal correspondence, partly because of the death of Mary (Weeks) Moore.

The items for the remainder of the decade include labor contracts with freedmen, 1865, and letters relating to the destruction of the various Louisiana estates and the difficulties of early adjustment and reconstruction.

## Volumes

Bound manuscript volumes include cashbooks, journals, a ledger, notebooks, a time book, and miscellaneous volumes. Volumes were kept by John Moore, Mary Conrad Weeks Moore, and the estate of David Weeks. These volumes relate to plantation management, African American slavery, and personal matters.

## Omissions

A list of omissions from the David Weeks and Family Papers (Mss. 528, 605), 1782–1957, is provided on Reel 20, frame 0789. Omissions consist of items from Boxes 58–97, Papers, 1866–1957; Boxes 98–99, Photographs; Box 100, Newspaper Clippings; Boxes 101–109, Printed Items; Box 110, Magazines; Box 111, Envelopes; and items from Boxes 112–122, Postwar Volumes, Christmas Cards, and Miscellany.

*N.B.* Related collections among the holdings of the Louisiana and Lower Mississippi Valley Collection, Louisiana State University Libraries include the Palfrey Family Papers (William T. Palfrey), 1776–1918, included in UPA's *Records of Ante-bellum Southern Plantations from the Revolution through the Civil War, Series I, Part 1*.

## Reel 1

### Introductory Materials

0001 Introductory Materials. 91 frames.

### Papers

0092 Box 1, Folder 1, 1782–1799. 13 frames.  
0105 Box 1, Folder 2, 1801–1808. 47 frames.  
0152 Box 1, Folder 3, 1809–1812. 44 frames.  
0196 Box 1, Folder 4, 1814–1817. 42 frames.  
0238 Box 1, Folder 5, 1818. 50 frames.  
0288 Box 1, Folder 6, 1819. 61 frames.  
0349 Box 1, Folder 7, 1820. 64 frames.  
0413 Box 1, Folder 8, 1821. 58 frames.  
0471 Box 2, Folder 9, January–June 1822. 49 frames.  
0520 Box 2, Folder 10, July–December 1822. 41 frames.  
0561 Box 2, Folder 11, Thruston Family Estate Papers, 1819–1822 and Undated. 38 frames.  
0599 Box 2, Folder 12, Thruston Family Estate Papers, Undated. 23 frames.  
0622 Box 2, Folder 13, January–December 1823. 72 frames.  
0694 Box 2, Folder 14, January–May 1824. 58 frames.  
0752 Box 2, Folder 15, June–December 1824 and January–February 1825. 68 frames.  
0820 Box 2, Folder 16, March–December 1825. 63 frames.  
0883 Box 3, Folder 17, January–November 1826. 69 frames.

## Reel 2

### *David Weeks and Family Papers (Mss. 528, 605), 1782–1957 cont.*

#### Papers cont.

0001 Box 3, Folder 18, January–December 1827. 73 frames.  
0074 Box 3, Folder 19, January–June 1828. 73 frames.

0147 Box 3, Folder 20, July–December 1828. 46 frames.  
 0193 Box 3, Folder 21, January–June 1829. 57 frames.  
 0250 Box 3, Folder 22, July–November 1829. 40 frames.  
 0290 Box 3, Folder 23, January–May 1830. 47 frames.  
 0337 Box 3, Folder 24, June–December 1830. 55 frames.  
 0392 Box 4, Folder 25, January–May 1831. 50 frames.  
 0442 Box 4, Folder 26, June–December 1831. 82 frames.  
 0524 Box 4, Folder 27, January–April 1832. 55 frames.  
 0579 Box 4, Folder 28, May–June 1832. 51 frames.  
 0630 Box 4, Folder 29, July–September 1832. 72 frames.  
 0702 Box 4, Folder 30, October–December 1832. 100 frames.  
 0802 Box 5, Folder 31, January–March 1833. 78 frames.  
 0880 Box 5, Folder 32, April–May 1833. 51 frames.  
 0931 Box 5, Folder 33, June 1833. 38 frames.

## Reel 3

### *David Weeks and Family Papers (Mss. 528, 605), 1782–1957 cont.*

#### Papers cont.

0001 Box 5, Folder 34, July–September 1833. 62 frames.  
 0063 Box 5, Folder 35, October–December 1833. 65 frames.  
 0128 Box 5, Folder 36, January–February 1834. 66 frames.  
 0194 Box 5, Folder 37, March 1834. 53 frames.  
 0247 Box 6, Folder 38, April 1834. 50 frames.  
 0297 Box 6, Folder 39, May 1834. 78 frames.  
 0375 Box 6, Folder 40, June 1834. 63 frames.  
 0438 Box 6, Folder 41, July 1834. 84 frames.  
 0522 Box 6, Folder 42, August 1834. 67 frames.  
 0589 Box 6, Folder 43, September–October 1834. 44 frames.  
 0633 Box 7, Folder 44, November–December 1834. 49 frames.  
 0682 Box 7, Folder 45, January–February 1835. 59 frames.  
 0741 Box 7, Folder 46, March–April 1835. 85 frames.  
 0826 Box 7, Folder 47, May 1835. 71 frames.  
 0897 Box 7, Folder 48, June 1835. 46 frames.

## Reel 4

### *David Weeks and Family Papers (Mss. 528, 605), 1782–1957 cont.*

#### Papers cont.

0001 Box 7, Folder 49, July–August 1835. 66 frames.  
 0067 Box 8, Folder 50, September–December 1835. 77 frames.  
 0144 Box 8, Folder 51, January–February 1836. 51 frames.  
 0195 Box 8, Folder 52, March 1836. 39 frames.  
 0234 Box 8, Folder 53, April–June 1836. 63 frames.  
 0297 Box 8, Folder 54, July–December 1836. 81 frames.  
 0378 Box 8, Folder 55, January–May 1837. 54 frames.  
 0432 Box 9, Folder 56, June–December 1837. 68 frames.  
 0500 Box 9, Folder 57, January–December 1838. 83 frames.  
 0583 Box 9, Folder 58, January–April 1839. 51 frames.  
 0634 Box 9, Folder 59, May–December 1839. 74 frames.

- 0708 Box 9, Folder 60, January–16 May 1840. 64 frames.
- 0772 Box 9, Folder 61, 20 May–July 1840. 64 frames.
- 0836 Box 10, Folder 62, August–December 1840. 78 frames.
- 0914 Box 10, Folder 63, January–March 1841. 58 frames.

## Reel 5

### *David Weeks and Family Papers (Mss. 528, 605), 1782–1957 cont.*

#### Papers cont.

- 0001 Box 10, Folder 64, April–May 1841. 75 frames.
- 0076 Box 10, Folder 65, June–1 July 1841. 43 frames.
- 0119 Box 10, Folder 66, 8 July–September 1841. 75 frames.
- 0194 Box 10, Folder 67, October–December 1841. 66 frames.
- 0260 Box 10, Folder 68, January–February 1842. 49 frames.
- 0309 Box 11, Folder 69, March–June 1842. 78 frames.
- 0387 Box 11, Folder 70, July–December 1842. 56 frames.
- 0443 Box 11, Folder 71, January–February 1843. 46 frames.
- 0489 Box 11, Folder 72, March–April 1843. 54 frames.
- 0543 Box 11, Folder 73, May–June 1843. 48 frames.
- 0591 Box 11, Folder 74, July–October 1843. 59 frames.
- 0650 Box 11, Folder 75, November–December 1843. 51 frames.
- 0701 Box 11, Folder 76, January–February 1844. 42 frames.
- 0743 Box 12, Folder 77, March–April 1844. 63 frames.
- 0806 Box 12, Folder 78, May 1844. 44 frames.
- 0850 Box 12, Folder 79, June 1844. 32 frames.
- 0882 Box 12, Folder 80, July–September 1844. 60 frames.
- 0942 Box 12, Folder 81, October–November 1844. 56 frames.

## Reel 6

### *David Weeks and Family Papers (Mss. 528, 605), 1782–1957 cont.*

#### Papers cont.

- 0001 Box 12, Folder 82, December 1844. 51 frames.
- 0052 Box 12, Folder 83, January–5 February 1845. 53 frames.
- 0105 Box 12, Folder 84, 8–27 February 1845. 37 frames.
- 0142 Box 13, Folder 85, March 1845. 51 frames.
- 0193 Box 13, Folder 86, April 1845. 51 frames.
- 0244 Box 13, Folder 87, May 1845. 34 frames.
- 0278 Box 13, Folder 88, June 1845. 51 frames.
- 0329 Box 13, Folder 89, July–August 1845. 45 frames.
- 0374 Box 13, Folder 90, September–October 1845. 34 frames.
- 0408 Box 13, Folder 91, November–December 1845. 56 frames.
- 0464 Box 13, Folder 92, January–February 1846. 42 frames.
- 0506 Box 14, Folder 93, March 1846. 43 frames.
- 0549 Box 14, Folder 94, April 1846. 31 frames.
- 0580 Box 14, Folder 95, May 1846. 40 frames.
- 0620 Box 14, Folder 96, June 1846. 48 frames.
- 0668 Box 14, Folder 97, July–August 1846. 39 frames.
- 0707 Box 14, Folder 98, September–October 1846. 31 frames.
- 0738 Box 14, Folder 99, November–December 1846. 53 frames.

- 0791 Box 14, Folder 100, January 1847. 57 frames.
- 0848 Box 14, Folder 101, February 1847. 42 frames.
- 0890 Box 15, Folder 102, March 1847. 45 frames.
- 0935 Box 15, Folder 103, 1–10 April 1847. 33 frames.
- 0968 Box 15, Folder 104, 12–30 April 1847. 45 frames.

## Reel 7

### *David Weeks and Family Papers (Mss. 528, 605), 1782–1957 cont.*

#### Papers cont.

- 0001 Box 15, Folder 105, 1–12 May 1847. 41 frames.
- 0042 Box 15, Folder 106, 13–31 May 1847. 57 frames.
- 0099 Box 15, Folder 107, June 1847. 29 frames.
- 0128 Box 15, Folder 108, July 1847. 44 frames.
- 0172 Box 15, Folder 109, August 1847. 34 frames.
- 0206 Box 15, Folder 110, September 1847. 22 frames.
- 0228 Box 15, Folder 111, October–November 1847. 35 frames.
- 0263 Box 16, Folder 112, December 1847. 37 frames.
- 0300 Box 16, Folder 113, S. Patout Estate Papers, 15 May 1847–19 June 1848. 11 frames.
- 0311 Box 16, Folder 114, January–February 1848. 86 frames.
- 0397 Box 16, Folder 115, March 1848. 57 frames.
- 0454 Box 16, Folder 116, April 1848. 40 frames.
- 0494 Box 16, Folder 117, May 1848. 45 frames.
- 0539 Box 17, Folder 118, June 1848. 43 frames.
- 0582 Box 17, Folder 119, July 1848. 24 frames.
- 0606 Box 17, Folder 120, August–October 1848. 58 frames.
- 0664 Box 17, Folder 121, November–December 1848. 50 frames.
- 0714 Box 17, Folder 122, January 1849. 46 frames.
- 0760 Box 17, Folder 123, February 1849. 25 frames.
- 0785 Box 17, Folder 124, March 1849. 33 frames.
- 0818 Box 17, Folder 125, April 1849. 23 frames.
- 0841 Box 17, Folder 126, May–June 1849. 63 frames.
- 0904 Box 18, Folder 127, July–September 1849. 53 frames.
- 0957 Box 18, Folder 128, October–December 1849. 46 frames.

## Reel 8

### *David Weeks and Family Papers (Mss. 528, 605), 1782–1957 cont.*

#### Papers cont.

- 0001 Box 18, Folder 129, January–February 1850. 22 frames.
- 0023 Box 18, Folder 130, March 1850. 54 frames.
- 0077 Box 18, Folder 131, April 1850. 27 frames.
- 0104 Box 18, Folder 132, May–June 1850. 45 frames.
- 0149 Box 18, Folder 133, July–August 1850. 30 frames.
- 0179 Box 19, Folder 134, September 1850. 40 frames.
- 0219 Box 19, Folder 135, October–November 1850. 47 frames.
- 0266 Box 19, Folder 136, December 1850. 48 frames.
- 0314 Box 19, Folder 137, January 1851. 29 frames.
- 0343 Box 19, Folder 138, February 1851. 34 frames.
- 0377 Box 19, Folder 139, 1–17 March 1851. 39 frames.



- 0416 Box 19, Folder 140, 18–31 March 1851. 34 frames.
- 0450 Box 20, Folder 141, 1–11 April 1851. 25 frames.
- 0475 Box 20, Folder 142, 12–30 April 1851. 34 frames.
- 0509 Box 20, Folder 143, May 1851. 57 frames.
- 0566 Box 20, Folder 144, June 1851. 25 frames.
- 0591 Box 20, Folder 145, July–August 1851. 41 frames.
- 0632 Box 20, Folder 146, September–October 1851. 48 frames.
- 0680 Box 20, Folder 147, November 1851. 48 frames.
- 0728 Box 20, Folder 148, 1–20 December 1851. 54 frames.
- 0782 Box 21, Folder 149, 21–31 December 1851. 60 frames.
- 0842 Box 21, Folder 150, 1–20 January 1852. 64 frames.
- 0906 Box 21, Folder 151, 21–30 January 1852. 45 frames.
- 0951 Box 21, Folder 152, 30–31 January 1852. 15 frames.

## Reel 9

### *David Weeks and Family Papers (Mss. 528, 605), 1782–1957 cont.*

#### Papers cont.

- 0001 Box 21, Folder 153, 1–14 February 1852. 64 frames.
- 0065 Box 21, Folder 154, 15–28 February 1852. 61 frames.
- 0126 Box 22, Folder 155, 1–9 March 1852. 40 frames.
- 0166 Box 22, Folder 156, 10–16 March 1852. 37 frames.
- 0203 Box 22, Folder 157, 16 March 1852. 37 frames.
- 0240 Box 22, Folder 158, 17–31 March 1852. 65 frames.
- 0305 Box 22, Folder 159, 1–8 April 1852. 39 frames.
- 0344 Box 22, Folder 160, 9–15 April 1852. 53 frames.
- 0397 Box 23, Folder 161, 16–23 April 1852. 36 frames.
- 0433 Box 23, Folder 162, 24–30 April 1852. 35 frames.
- 0468 Box 23, Folder 163, 1–9 May 1852. 38 frames.
- 0506 Box 23, Folder 164, 10–17 May 1852. 52 frames.
- 0558 Box 23, Folder 165, 18–31 May 1852. 36 frames.
- 0594 Box 23, Folder 166, 1–12 June 1852. 31 frames.
- 0625 Box 23, Folder 167, 13–28 June 1852. 41 frames.
- 0666 Box 23, Folder 168, 1–10 July 1852. 37 frames.
- 0703 Box 23, Folder 169, 11–21 July 1852. 44 frames.
- 0747 Box 24, Folder 170, 22–31 July 1852. 33 frames.
- 0780 Box 24, Folder 171, 1–17 August 1852. 48 frames.
- 0828 Box 24, Folder 172, 18–31 August 1852. 41 frames.
- 0869 Box 24, Folder 173, September 1852. 53 frames.
- 0922 Box 24, Folder 174, October 1852. 24 frames.
- 0946 Box 24, Folder 175, 1–20 November 1852. 28 frames.
- 0974 Box 24, Folder 176, 21 November–9 December 1852. 37 frames.

## Reel 10

### *David Weeks and Family Papers (Mss. 528, 605), 1782–1957 cont.*

#### Papers cont.

- 0001 Box 24, Folder 177, 10–25 December 1852. 30 frames.
- 0031 Box 25, Folder 178, 26–30 December 1852 and Undated. 33 frames.
- 0064 Box 25, Folder 179, 1–19 January 1853. 37 frames.

0101 Box 25, Folder 180, 20–31 January 1853. 31 frames.  
 0132 Box 25, Folder 181, 1–15 February 1853. 30 frames.  
 0162 Box 25, Folder 182, 16–28 February 1853. 28 frames.  
 0190 Box 25, Folder 183, 1–9 March 1853. 29 frames.  
 0219 Box 25, Folder 184, 11–17 March 1853. 50 frames.  
 0269 Box 26, Folder 185, 18–25 March 1853. 20 frames.  
 0289 Box 26, Folder 186, 26–31 March 1853. 29 frames.  
 0318 Box 26, Folder 187, 1–5 April 1853. 19 frames.  
 0337 Box 26, Folder 188, 6–15 April 1853. 28 frames.  
 0365 Box 26, Folder 189, 16–23 April 1853. 44 frames.  
 0409 Box 26, Folder 190, 25–30 April 1853. 24 frames.  
 0433 Box 26, Folder 191, 1–10 May 1853. 29 frames.  
 0462 Box 26, Folder 192, 11–22 May 1853. 27 frames.  
 0489 Box 27, Folder 193, 23–30 May 1853. 38 frames.  
 0527 Box 27, Folder 194, 1–11 June 1853. 31 frames.  
 0558 Box 27, Folder 195, 13–30 June 1853. 30 frames.  
 0588 Box 27, Folder 196, 1–16 July 1853. 17 frames.  
 0605 Box 27, Folder 197, 18–30 July 1853. 31 frames.  
 0636 Box 27, Folder 198, 1–12 August 1853. 22 frames.  
 0658 Box 27, Folder 199, 13–31 August 1853. 32 frames.  
 0690 Box 27, Folder 200, September 1853. 31 frames.  
 0721 Box 27, Folder 201, October 1853. 25 frames.  
 0746 Box 28, Folder 202, November 1853. 51 frames.  
 0797 Box 28, Folder 203, 1–20 December 1853. 34 frames.  
 0831 Box 28, Folder 204, 21–31 December 1853 and Undated. 41 frames.  
 0872 Box 28, Folder 205, D. E. Mead Estate Papers, 1 March 1853–28 March 1854. 13 frames.  
 0885 Box 28, Folder 206, D. E. Mead Estate Papers, 12 April 1854–1 August 1855. 31 frames.

## Reel 11

### *David Weeks and Family Papers (Mss. 528, 605), 1782–1957 cont.*

#### Papers cont.

0001 Box 28, Folder 207, 1–11 January 1854. 38 frames.  
 0039 Box 28, Folder 208, 12–31 January 1854. 44 frames.  
 0083 Box 28, Folder 209, February 1854. 36 frames.  
 0119 Box 29, Folder 210, 1–23 March 1854. 31 frames.  
 0150 Box 29, Folder 211, 25–30 March 1854. 20 frames.  
 0170 Box 29, Folder 212, 1–15 April 1854. 27 frames.  
 0197 Box 29, Folder 213, 16–25 April 1854. 28 frames.  
 0225 Box 29, Folder 214, 26–29 April 1854. 18 frames.  
 0243 Box 29, Folder 215, 1–11 May 1854. 36 frames.  
 0279 Box 29, Folder 216, 12–24 May 1854. 35 frames.  
 0314 Box 29, Folder 217, 25–31 May 1854. 23 frames.  
 0337 Box 29, Folder 218, 1–20 June 1854. 23 frames.  
 0360 Box 29, Folder 219, 21–30 June 1854. 25 frames.  
 0385 Box 30, Folder 220, 1–10 July 1854. 32 frames.  
 0417 Box 30, Folder 221, 11–25 July 1854. 29 frames.  
 0446 Box 30, Folder 222, 26 July–5 August 1854. 33 frames.  
 0479 Box 30, Folder 223, 7–24 August 1854. 40 frames.  
 0519 Box 30, Folder 224, 25 August–13 September 1854. 28 frames.  
 0547 Box 30, Folder 225, 14–30 September 1854. 39 frames.  
 0586 Box 30, Folder 226, 3–24 October 1854. 27 frames.

0613 Box 30, Folder 227, 25 October–12 November 1854. 20 frames.  
 0633 Box 31, Folder 228, 15 November–13 December 1854. 26 frames.  
 0659 Box 31, Folder 229, 15–24 December 1854. 31 frames.  
 0690 Box 31, Folder 230, 26–31 December 1854. 22 frames.  
 0712 Box 31, Folder 231, Undated [1854]. 43 frames.  
 0755 Box 31, Folder 232, 1–19 January 1855. 40 frames.  
 0795 Box 31, Folder 233, 20–31 January 1855. 26 frames.  
 0821 Box 31, Folder 234, February 1855. 35 frames.  
 0856 Box 31, Folder 235, 1–17 March 1855. 27 frames.  
 0883 Box 31, Folder 236, 19–28 March 1855. 32 frames.  
 0915 Box 32, Folder 237, 29 March–7 April 1855. 28 frames.  
 0943 Box 32, Folder 238, 9–23 April 1855. 34 frames.

## Reel 12

### *David Weeks and Family Papers (Mss. 528, 605), 1782–1957 cont.*

#### Papers cont.

0001 Box 32, Folder 239, 24 April–10 May 1855. 31 frames.  
 0032 Box 32, Folder 240, 11–30 May 1855. 27 frames.  
 0059 Box 32, Folder 241, 1–15 June 1855. 35 frames.  
 0094 Box 32, Folder 242, 16–30 June 1855. 29 frames.  
 0123 Box 32, Folder 243, 2–25 July 1855. 33 frames.  
 0156 Box 32, Folder 244, 27 July–5 August 1855. 29 frames.  
 0185 Box 33, Folder 245, 6–28 August 1855. 28 frames.  
 0213 Box 33, Folder 246, September 1855. 33 frames.  
 0246 Box 33, Folder 247, October 1855. 26 frames.  
 0272 Box 33, Folder 248, 2–10 November 1855. 29 frames.  
 0301 Box 33, Folder 249, 11–25 November 1855. 25 frames.  
 0326 Box 33, Folder 250, 26 November–10 December 1855. 46 frames.  
 0372 Box 33, Folder 251, 11–29 December 1855. 45 frames.  
 0417 Box 33, Folder 252, 30 December 1855 and Undated. 25 frames.  
 0442 Box 34, Folder 253, 1–14 January 1856. 32 frames.  
 0474 Box 34, Folder 254, 15–23 January 1856. 25 frames.  
 0499 Box 34, Folder 255, 26 January–5 February 1856. 27 frames.  
 0526 Box 34, Folder 256, 6–16 February 1856. 33 frames.  
 0559 Box 34, Folder 257, 18–29 February 1856. 37 frames.  
 0596 Box 34, Folder 258, 1–5 March 1856. 23 frames.  
 0619 Box 34, Folder 259, 6–14 March 1856. 27 frames.  
 0646 Box 34, Folder 260, 15–20 March 1856. 31 frames.  
 0677 Box 35, Folder 261, 21–26 March 1856. 30 frames.  
 0707 Box 35, Folder 262, 27–31 March 1856. 25 frames.  
 0732 Box 35, Folder 263, 1–10 April 1856. 33 frames.  
 0765 Box 35, Folder 264, 11–16 April 1856. 17 frames.  
 0782 Box 35, Folder 265, 17–22 April 1856. 28 frames.  
 0810 Box 35, Folder 266, 23–26 April 1856. 20 frames.  
 0830 Box 35, Folder 267, 27–30 April 1856. 24 frames.  
 0854 Box 35, Folder 268, 1–9 May 1856. 34 frames.  
 0888 Box 35, Folder 269, 10–16 May 1856. 36 frames.  
 0924 Box 35, Folder 270, 17–24 May 1856. 20 frames.  
 0944 Box 36, Folder 271, 26–31 May 1856. 53 frames.

## Reel 13

### *David Weeks and Family Papers (Mss. 528, 605), 1782–1957 cont.*

#### Papers cont.

0001 Box 36, Folder 272, 1–9 June 1856. 29 frames.  
0030 Box 36, Folder 273, 10–20 June 1856. 39 frames.  
0069 Box 36, Folder 274, 21 June–4 July 1856. 33 frames.  
0102 Box 36, Folder 275, 5–22 July 1856. 35 frames.  
0137 Box 36, Folder 276, 23 July–15 August 1856. 32 frames.  
0169 Box 36, Folder 277, 16 August–5 September 1856. 45 frames.  
0214 Box 36, Folder 278, 6–24 September 1856. 26 frames.  
0240 Box 36, Folder 279, 25 September–9 October 1856. 31 frames.  
0271 Box 37, Folder 280, 10–27 October 1856. 26 frames.  
0297 Box 37, Folder 281, 28 October–11 November 1856. 21 frames.  
0318 Box 37, Folder 282, 12–28 November 1856. 24 frames.  
0342 Box 37, Folder 283, 1–17 December 1856. 28 frames.  
0370 Box 37, Folder 284, 22–31 December 1856. 14 frames.  
0384 Box 37, Folder 285, Undated [1856]. 20 frames.  
0404 Box 37, Folder 286, 2–23 January 1857. 29 frames.  
0433 Box 37, Folder 287, 24 January–13 February 1857. 33 frames.  
0466 Box 37, Folder 288, 14–28 February 1857. 30 frames.  
0496 Box 37, Folder 289, 1–7 March 1857. 34 frames.  
0530 Box 38, Folder 290, 8–20 March 1857. 24 frames.  
0554 Box 38, Folder 291, 21–29 March 1857. 46 frames.  
0600 Box 38, Folder 292, 30 March–4 April 1857. 34 frames.  
0634 Box 38, Folder 293, 5–11 April 1857. 39 frames.  
0673 Box 38, Folder 294, 12–21 April 1857. 38 frames.  
0711 Box 38, Folder 295, 22–29 April 1857. 32 frames.  
0743 Box 38, Folder 296, 30 April–4 May 1857. 27 frames.  
0770 Box 38, Folder 297, 5–18 May 1857. 30 frames.  
0800 Box 38, Folder 298, 19–28 May 1857. 29 frames.  
0829 Box 39, Folder 299, 29 May–3 June 1857. 30 frames.  
0859 Box 39, Folder 300, 4–21 June 1857. 39 frames.  
0898 Box 39, Folder 301, 22–30 June 1857. 25 frames.  
0923 Box 39, Folder 302, 1–11 July 1857. 30 frames.  
0953 Box 39, Folder 303, 12–31 July 1857. 32 frames.  
0985 Box 39, Folder 304, August 1857. 29 frames.

## Reel 14

### *David Weeks and Family Papers (Mss. 528, 605), 1782–1957 cont.*

#### Papers cont.

0001 Box 39, Folder 305, September 1857. 44 frames.  
0045 Box 39, Folder 306, 1–12 October 1857. 26 frames.  
0071 Box 39, Folder 307, 13–26 October 1857. 27 frames.  
0098 Box 40, Folder 308, 27 October–17 November 1857. 39 frames.  
0137 Box 40, Folder 309, 18–27 November 1857. 27 frames.  
0164 Box 40, Folder 310, 1–15 December 1857. 47 frames.  
0211 Box 40, Folder 311, 16–24 December 1857. 48 frames.  
0259 Box 40, Folder 312, 25–31 December 1857. 17 frames.  
0276 Box 40, Folder 313, Undated [1857]. 55 frames.

0331 Box 40, Folder 314, 1–26 January 1858. 37 frames.  
 0368 Box 40, Folder 315, 29 January–13 February 1858. 33 frames.  
 0401 Box 41, Folder 316, 14–25 February 1858. 40 frames.  
 0441 Box 41, Folder 317, 26 February–3 March 1858. 22 frames.  
 0463 Box 41, Folder 318, 4–12 March 1858. 31 frames.  
 0494 Box 41, Folder 319, 13–17 March 1858. 25 frames.  
 0519 Box 41, Folder 320, 18–22 March 1858. 25 frames.  
 0544 Box 41, Folder 321, 23–31 March 1858. 40 frames.  
 0584 Box 41, Folder 322A, 1–15 April 1858. 24 frames.  
 0608 Box 41, Folder 322B, 16–20 April 1858. 33 frames.  
 0641 Box 41, Folder 323, 21–26 April 1858. 34 frames.  
 0675 Box 42, Folder 324, 27 April–3 May 1858. 25 frames.  
 0700 Box 42, Folder 325, 4–16 May 1858. 42 frames.  
 0742 Box 42, Folder 326, 17–22 May 1858. 19 frames.  
 0761 Box 42, Folder 327, 24–31 May 1858. 21 frames.  
 0782 Box 42, Folder 328, 1–13 June 1858. 41 frames.  
 0823 Box 42, Folder 329, 14–21 June 1858. 27 frames.  
 0850 Box 42, Folder 330, 22 June–5 July 1858. 37 frames.  
 0887 Box 42, Folder 331, 6–27 July 1858. 41 frames.  
 0928 Box 42, Folder 332, 28 July–25 August 1858. 32 frames.

## Reel 15

### *David Weeks and Family Papers (Mss. 528, 605), 1782–1957 cont.*

#### Papers cont.

0001 Box 43, Folder 333, 27 August–20 September 1858. 44 frames.  
 0045 Box 43, Folder 334, 21 September–13 October 1858. 32 frames.  
 0077 Box 43, Folder 335, 15 October–8 November 1858. 36 frames.  
 0113 Box 43, Folder 336, 10–29 November 1858. 55 frames.  
 0168 Box 43, Folder 337, 1–15 December 1858. 37 frames.  
 0205 Box 43, Folder 338, 16–30 December 1858 and Undated. 36 frames.  
 0241 Box 43, Folder 339, 1–18 January 1859. 36 frames.  
 0277 Box 43, Folder 340, 19–30 January 1859. 41 frames.  
 0318 Box 44, Folder 341, 1–18 February 1859. 47 frames.  
 0365 Box 44, Folder 342, 19 February–8 March 1859. 35 frames.  
 0400 Box 44, Folder 343, 10–16 March 1859. 56 frames.  
 0456 Box 44, Folder 344, 17–31 March 1859. 28 frames.  
 0484 Box 44, Folder 345, 1–18 April 1859. 36 frames.  
 0520 Box 44, Folder 346, 19 April–6 May 1859. 35 frames.  
 0555 Box 44, Folder 347, 7–21 May 1859. 35 frames.  
 0590 Box 45, Folder 348, 23 May–11 June 1859. 24 frames.  
 0614 Box 45, Folder 349, 13–29 June 1859. 27 frames.  
 0641 Box 45, Folder 350, 2–18 July 1859. 26 frames.  
 0667 Box 45, Folder 351, 19–31 July 1859. 19 frames.  
 0686 Box 45, Folder 352, 1–25 August 1859. 28 frames.  
 0714 Box 45, Folder 353, 26 August–11 September 1859. 25 frames.  
 0739 Box 45, Folder 354, 12–25 September 1859. 34 frames.  
 0773 Box 45, Folder 355, 26 September–14 October 1859. 30 frames.  
 0803 Box 46, Folder 356, 15 October–2 November 1859. 20 frames.  
 0823 Box 46, Folder 357, 4–17 November 1859. 31 frames.  
 0854 Box 46, Folder 358, 18 November–12 December 1859. 21 frames.  
 0875 Box 46, Folder 359, 13–23 December 1859. 29 frames.

- 0904 Box 46, Folder 360, 24–31 December 1959. 27 frames.  
0931 Box 46, Folder 361, Undated [1859]. 25 frames.

## Reel 16

### *David Weeks and Family Papers (Mss. 528, 605), 1782–1957 cont.*

#### Papers cont.

- 0001 Box 46, Folder 362, Prescott and Moore File, 1857–1863. 45 frames.  
0046 Box 46, Folder 363, Prescott and Moore File, 1864–1867. 61 frames.  
0107 Box 46, Folder 364, Francis X. White File, 1860–1866. 29 frames.  
0136 Box 47, Folder 365, 1–7 January 1860. 37 frames.  
0173 Box 47, Folder 366, 9–24 January 1860. 29 frames.  
0202 Box 47, Folder 367, 25–31 January 1860. 21 frames.  
0223 Box 47, Folder 368, 1–9 February 1860. 25 frames.  
0248 Box 47, Folder 369, 10–20 February 1860. 24 frames.  
0272 Box 47, Folder 370, 21 February–5 March 1860. 40 frames.  
0312 Box 47, Folder 371, 6–15 March 1860. 25 frames.  
0337 Box 47, Folder 372, 16–21 March 1860. 34 frames.  
0371 Box 47, Folder 373, 22–23 March 1860. 26 frames.  
0397 Box 48, Folder 374, 24 March–3 April 1860. 34 frames.  
0431 Box 48, Folder 375, 4–9 April 1860. 17 frames.  
0448 Box 48, Folder 376, 10–19 April 1860. 24 frames.  
0472 Box 48, Folder 377, 20–26 April 1860. 21 frames.  
0493 Box 48, Folder 378, 27–30 April 1860. 11 frames.  
0504 Box 48, Folder 379, 1–15 May 1860. 40 frames.  
0544 Box 48, Folder 380, 16–24 May 1860. 33 frames.  
0577 Box 48, Folder 381, 25 May–6 June 1860. 30 frames.  
0607 Box 49, Folder 382, 8–22 June 1860. 54 frames.  
0661 Box 49, Folder 383, 23 June–3 July 1860. 37 frames.  
0698 Box 49, Folder 384, 4–28 July 1860. 48 frames.  
0746 Box 49, Folder 385, August 1860. 35 frames.  
0781 Box 49, Folder 386, 1–16 September 1860. 30 frames.  
0811 Box 49, Folder 387, 19 September–10 October 1860. 45 frames.  
0856 Box 49, Folder 388, 12–31 October 1860. 37 frames.  
0893 Box 49, Folder 389, November 1860. 36 frames.

## Reel 17

### *David Weeks and Family Papers (Mss. 528, 605), 1782–1957 cont.*

#### Papers cont.

- 0001 Box 50, Folder 390, 5–18 December 1860. 30 frames.  
0031 Box 50, Folder 391, 19–31 December 1860. 23 frames.  
0054 Box 50, Folder 392, Undated [1860]. 37 frames.  
0091 Box 50, Folder 393, 1 January–8 February 1861. 32 frames.  
0123 Box 50, Folder 394, 12 February–12 March 1861. 33 frames.  
0156 Box 50, Folder 395, 13–30 March 1861. 22 frames.  
0178 Box 50, Folder 396, 1–12 April 1861. 20 frames.  
0198 Box 50, Folder 397, 13 April–7 May 1861. 29 frames.  
0227 Box 51, Folder 398, 14 May–28 June 1861. 34 frames.  
0261 Box 51, Folder 399, 5 July–10 September 1861. 29 frames.

0290 Box 51, Folder 400, 11–30 September 1861. 36 frames.  
 0326 Box 51, Folder 401, October 1861. 26 frames.  
 0352 Box 51, Folder 402A, 3 November–11 December 1861. 28 frames.  
 0380 Box 51, Folder 402B, 13–31 December 1861. 28 frames.  
 0408 Box 51, Folder 403, Undated [1861]. 23 frames.  
 0431 Box 52, Folder 404, January 1862. 26 frames.  
 0457 Box 52, Folder 405, 1–11 February 1862. 33 frames.  
 0490 Box 52, Folder 406, 12–27 February 1862. 29 frames.  
 0519 Box 52, Folder 407, 1–13 March 1862. 33 frames.  
 0552 Box 52, Folder 408, 15–31 March 1862. 23 frames.  
 0575 Box 52, Folder 409, 1–12 April 1862. 22 frames.  
 0597 Box 52, Folder 410, 13–30 April 1862. 23 frames.  
 0620 Box 52, Folder 411, 1–23 May 1862. 29 frames.  
 0649 Box 53, Folder 412, 24 May–12 June 1862. 20 frames.  
 0669 Box 53, Folder 413, 23 June–30 July 1862. 33 frames.  
 0702 Box 53, Folder 414, 1 August–18 September 1862. 31 frames.  
 0733 Box 53, Folder 415, 19 September–30 October 1862. 33 frames.  
 0766 Box 53, Folder 416, November–December 1862. 27 frames.  
 0793 Box 53, Folder 417, Undated [1862]. 7 frames.  
 0800 Box 53, Folder 418, 3 January–17 February 1863. 33 frames.

## Reel 18

### *David Weeks and Family Papers (Mss. 528, 605), 1782–1957 cont.*

#### Papers cont.

0001 Box 53, Folder 419, 29 February–2 April 1863. 43 frames.  
 0044 Box 53, Folder 420, 3 April–19 May 1863. 35 frames.  
 0079 Box 54, Folder 421, 20 May–25 June 1863. 35 frames.  
 0114 Box 54, Folder 422, 4 July–21 August 1863. 31 frames.  
 0145 Box 54, Folder 423, 1 September–10 October 1863. 51 frames.  
 0196 Box 54, Folder 424, 11 October–18 November 1863. 38 frames.  
 0234 Box 54, Folder 425, 22 November–30 December 1863 and Undated. 40 frames.  
 0274 Box 54, Folder 426, 1 January–4 February 1864. 46 frames.  
 0320 Box 54, Folder 427, 5 February–7 March 1864. 40 frames.  
 0360 Box 55, Folder 428, 8 March–13 April 1864. 36 frames.  
 0396 Box 55, Folder 429, 15 April–30 May 1864. 63 frames.  
 0459 Box 55, Folder 430, 1 June–14 July 1864. 53 frames.  
 0512 Box 55, Folder 431, 15 July–29 August 1864. 43 frames.  
 0555 Box 55, Folder 432, September 1864. 46 frames.  
 0601 Box 55, Folder 433, 1–18 October 1864. 41 frames.  
 0642 Box 55, Folder 434, 21 October–21 November 1864. 44 frames.  
 0686 Box 56, Folder 435, 28 November–29 December 1864. 43 frames.  
 0729 Box 56, Folder 436, Undated [1864]. 17 frames.

## Reel 19

### *David Weeks and Family Papers (Mss. 528, 605), 1782–1957 cont.*

#### Papers cont.

0001 Box 56, Folder 437, January 1865. 50 frames.  
 0051 Box 56, Folder 438, February 1865. 41 frames.

- 0092 Box 56, Folder 439, March 1865. 53 frames.
- 0145 Box 56, Folder 440, April 1865. 43 frames.
- 0188 Box 57, Folder 441, 11 May–29 June 1865. 36 frames.
- 0224 Box 57, Folder 442, 2 July–16 September 1865. 43 frames.
- 0267 Box 57, Folder 443, 18 September–5 October 1865. 30 frames.
- 0297 Box 57, Folder 444, 8–30 October 1865. 35 frames.
- 0332 Box 57, Folder 445, Mary Clara Conrad Weeks Moore, Estate Papers, October 1865 and Undated. 23 frames.
- 0355 Box 57, Folder 446, November 1865. 45 frames.
- 0400 Box 57, Folder 447, 1–18 December 1865. 45 frames.
- 0445 Box 57, Folder 448, 19–30 December 1865 and Undated. 21 frames.
- 0466 Box 57, Folder 449, Undated Items of the Civil War Years, ca. 1862–1865. 15 frames.
- 0481 Box 94, Folder 838, Allie Weeks, Charles C. Weeks, and Frances Weeks, Letters, Undated. 27 frames.
- 0508 Box 94, Folder 854, John Moore, Odd Fellow's Hall Association of New Orleans, Stock Certificate, Undated. 2 frames.
- 0510 Box 116, Folder 1010, Randall Lee Gibson, Undated [1850s]. 28 frames.
- 0538 Box 117, Folder 1020, Land Descriptions, Undated. 25 frames.

#### Volumes

- 0563 Box 112, Volume 3, John Moore, Bank Journal and Memorandum Book, 1852–1865. 23 frames.
- 0586 Box 112, Volume 4, John Moore and Mary Conrad Weeks Moore, Bank Journal, 1845–1850. 5 frames.
- 0591 Box 112, Volume 5, W. F. Weeks, Bank Journal, 1845–1855. 7 frames.
- 0598 Box 112, Volume 6, Mary Conrad Weeks Moore, Bank Journal and Memorandum Book, 1845–1856. 8 frames.
- 0606 Box 112, Volume 7, John Moore, Bank Journal, 1847–1854. 9 frames.
- 0615 Box 112, Volume 8, R. W. Montgomery, Bank Journal, 1857–1859. 14 frames.
- 0629 Box 112, Volume 9, John Moore, Bank Journal and Memorandum Book, 1857–1865. 9 frames.
- 0638 Box 112, Volume 10, John Moore, Bank Journal and Memorandum Book, 1845–1863. 4 frames.
- 0642 Box 112, Volume 11, John Moore, Cashbook and Memorandum Book, 1841–1846. 32 frames.
- 0674 Box 112, Volume 12, Mary Conrad Weeks Moore, Cashbook, 1854–1862. 13 frames.
- 0687 Box 112, Volume 13, Estate of D. W. Magill, Cashbook and Memorandum Book, 1855–1859. 22 frames.
- 0709 Box 112, Volume 14, John Moore, Cashbook and Memorandum Book, 1858–1866. 33 frames.
- 0742 Box 112, Volume 15, John Moore, Cashbook and Memorandum Book, 1863–1865. 15 frames.
- 0757 Box 112, Volume 16, John Moore, Cashbook and Memorandum Book, 1864–1865. 15 frames.
- 0772 Box 112, Volume 17, John Moore, Cashbook and Account Book with J. Schreiner, 1865–1867. 6 frames.
- 0778 Box 115, Volume 51, Unidentified Person, Diary, 1865–1867. 32 frames.



## Reel 20

### ***David Weeks and Family Papers (Mss. 528, 605), 1782–1957 cont.***

#### **Volumes cont.**

- 0001 Box 119, Volume 52, John Moore, Journal, 1835–1837 and 1867. 66 frames.  
0067 Box 119, Volume 53, John Moore, Journal, No. 3, 1836–1844 and 1867. 105 frames.  
0172 Box 119, Volume 54, John Moore, Journal, Affairs of Prescott and Moore, 1858–1864 and 1867. 18 frames.  
0190 Box 119, Volume 55, John Moore, Ledger, 1847–1856 and 1867. 30 frames.  
0220 Box 119, Volume 56, Unidentified Person, Ledger and Inventory, 1849–1851. 91 frames.  
0311 Box 119, Volume 57, Unidentified Person, Ledger, 1850–1851. 99 frames.  
0410 Box 119, Volume 58, Unidentified Person, Ledger, 1851–1852. 26 frames.  
0436 Box 119, Volume 59, New Iberia Lodge, Ledger, 1851–1856 and 1860–1861. 21 frames.  
0457 Box 119, Volume 60, John Moore, Ledger, 1855–1865 and 1867. 52 frames.  
0509 Box 119, Volume 61, John Moore, Ledger, 1858–1864 and 1867. 27 frames.  
0536 Box 115, Volume 62, John Moore, Memorandum Book, 1855–1866. 29 frames.  
0565 Box 120, Volume 75, Succession of David Weeks, Portfolio, 1844–1864. 120 frames.  
0685 Box 120, Volume 76, Succession of David Weeks, Portfolio, 1844–1865 and 1876–1889. 89 frames.  
0774 Box 120, Volume 79, Unidentified Person, Record Book, 1865. 15 frames.

#### **Omissions**

- 0789 List of Omissions from David Weeks and Family Papers (Mss. 528, 605), 1782–1957. 1 frame.

# **RECORDS OF ANTE-BELLUM SOUTHERN PLANTATIONS**

From the Revolution  
through the Civil War

- Series A. Selections from the South Caroliniana Library,  
University of South Carolina**
- Series B. Selections from the South Carolina Historical Society**
- Series C. Selections from the Library of Congress**
- Series D. Selections from the Maryland Historical Society**
- Series E. Selections from the University of Virginia Library,  
University of Virginia**
- Series F. Selections from Duke University Library**
- Series G. Selections from the Barker Texas History Center,  
University of Texas at Austin**
- Series H. Selections from the Howard-Tilton Library, Tulane  
University, and the Louisiana State Museum Archives**
- Series I. Selections from Louisiana State University**
- Series J. Selections from the Southern Historical Collection**
- Series K. Selections from The Colonial Williamsburg Foundation  
Library, The Shirley Plantation Collection**
- Series L. Selections from the Earl Gregg Swem Library,  
The College of William and Mary in Virginia**
- Series M. Selections from the Virginia Historical Society**