

# LexisNexis® *Advanced Investigative Solution*

## Data Analysis for State and Regional Fusion Centers



### Criminals have one thing in common... they don't want to be found

One thing individuals engaged in criminal activity have in common—whether it be terrorists, gangs, illegal immigrants, narcotics and illegal firearms dealers, or sex offenders—they don't like authorities to know where they are or what they are doing. They will move, change their affiliations, and even obscure or create new identities to avoid detection. Simply keeping pace with technology won't cut it—you need advanced solutions that put you one step ahead of offenders.

### Making known out of the unknown

Criminal activity leaves a trail of data linking places, people and events—creating “entities” that can be leveraged into actionable information for law enforcement. The LexisNexis® *Advanced Investigative Solution* uses a sophisticated combination of data analytics software and powerful supercomputers to connect the dots. “Wild Card” searches can find individuals or unknown relationships from only partial suspect information, creating links that give you tangible, decisionable entities where disparate bits of sparse data existed before. Using the system in unison with the data fusion centers across jurisdictions can eliminate information silos and expand investigations across an entire region.

### Locate persons of interest wherever they are

LexisNexis® *Advanced Investigative Solution* allows an agency to combine their data with LexisNexis data, including data from other states, public records and federal government databases to create the best known information about the individuals or entities you are investigating.

#### LexisNexis® *Advanced Investigative Solution*:

- Provides a single interface with advanced query and search capabilities which leverages data from commercial sources, your agency or other cooperating agencies
- Fuses and links data together to reveal entities and actionable information from disparate types and sources of data
- Identifies entities from sparse data or wild card variables
- Minimizes false positives
- Displays data in useful formats with advanced visualization tools, including an easy-to-use mapping tool
- Requires little to no training

*"Not only has it helped in our investigations, it has been instrumental in helping us find wanted persons and serving warrants that were inactive for years. We have found and extradited persons from across the country with the sole help of AIS."*

- Director of State Police MIS

ADVANCED GOVERNMENT SOLUTIONS

Intelligence  
Analysis

Investigative

Screening &  
Identity Verification

Research

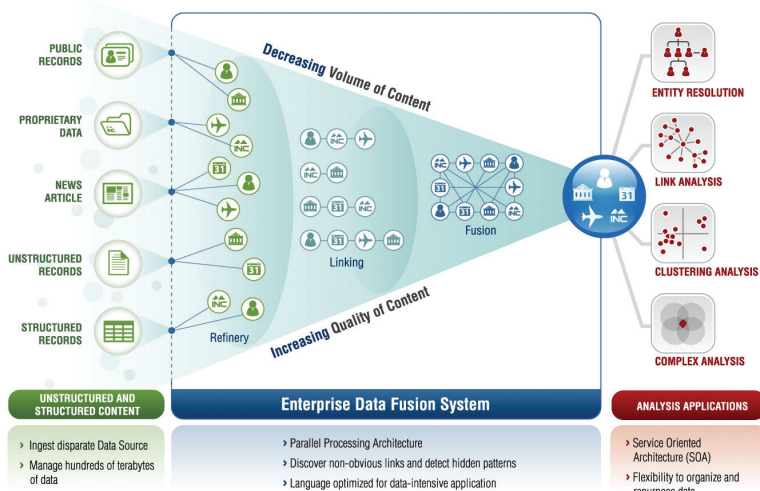
Case Management

Digital Asset  
Management

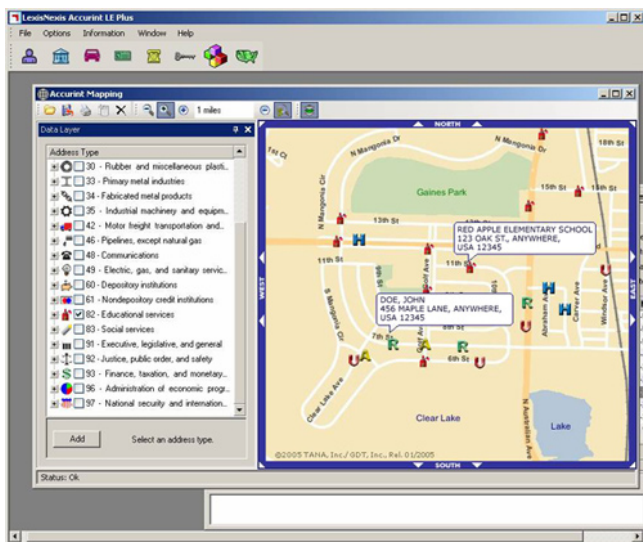


LexisNexis®

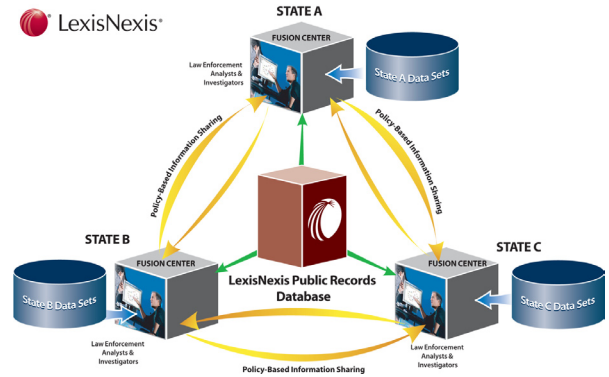
# Get the critical information you need — quickly and efficiently



LexisNexis data analysis, fusion and linking process provides actionable information about an entity.



Information is displayed in a number of useful formats, including an easy-to-use mapping tool (right).



The LexisNexis Advanced Investigative Solution enables the sharing of information across jurisdictions (above).

## Rapid access to data and information sharing

- The *Advanced Investigative Solution* integrates LexisNexis public records with state-specific data and other law enforcement data sets to facilitate identification and location of entities.
- The *Advanced Investigative Solution* enables facilities law enforcement agencies to collaborate across a federated systems architecture and across jurisdictions.
- Policy-based architecture incorporates privacy-enabling technology such as role-based access controls and audit trails.

## Count on superior customer service

Providing a comprehensive investigative solution is only the beginning. LexisNexis is also fervently committed to providing prompt, friendly and useful customer service. Our experienced consultants can answer questions and offer suggestions on how to get the most out of your data.

Quantity, quality, accuracy and efficiency—LexisNexis has brought them all together in a solution designed specifically for government and law enforcement.

LexisNexis is a proud sponsor of



To learn more about LexisNexis Advanced Investigative Solution call 1-888-579-7638 or visit [www.lexisnexis.com/government](http://www.lexisnexis.com/government)