

What's new?

Increase your efficiency and bring case data sets down to size with the latest enhancements to LexisNexis® Early Data Analyzer and LAW PreDiscovery™ software.

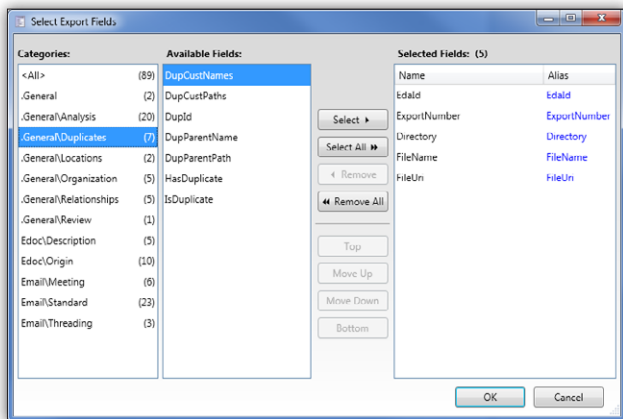
Speed e-discovery with faster performance, Web tools, near-dupe analysis for processing and more.

Today's rapid expansion of litigation data doesn't have to be overwhelming. By using the latest versions of LexisNexis® Early Data Analyzer and LAW PreDiscovery™ software together, you can save time, cull non-responsive data—even near-duplicates—and gain better control for more effective e-discovery.

What's new in LexisNexis® Early Data Analyzer 1.4?

Export Enhancements

Now you can easily identify which custodians hold the duplicates of potentially significant original documents; export fields contain custodian and path information for duplicate relationships.



In addition, by exporting MSG files in HTML or MHTML format, you can avoid production of email in MSG format and reduce the risk of reviewers inadvertently replying to or forwarding messages.

One more export enhancement: you can perform a more in-depth review of results from a LexisNexis Early Data Analyzer case by generating a native export based on list provided by an external review application such as Concordance® software, and then re-export a smaller set from LexisNexis Early Data Analyzer based on documents tagged during external review.

Better Filter Performance

Perform faster filter-result calculations in cases with a large number of records.

DD/RAW Forensic Image File Support

Streamline processing by importing DD/RAW forensic images without having to first mount them manually.

Import Support for PDF Portfolios

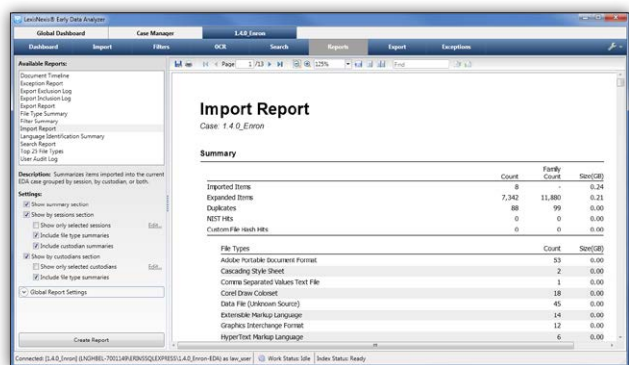
Obtain content from files within PDF portfolios without having to expand them manually prior to import.

Indexer

Control search results more effectively. For example, searching for a company name that happens to appear in a path might return excessive irrelevant records. Easily use control fields in the index to reduce non-responsive results.

Import Report for Better Financial Management

View counts and sizes associated with ingested data for billing purposes or to communicate import results to stakeholders.



Date Range Search Filter

Optimize workflow by using filters to specify a date range directly from the Search tab—only items that have passed through all other filters (“included” items) and fall within the specified date range will be returned. (Any existing date filter will not be removed or modified.)

Web Tools: Insight and Faster Response Times

Explore information not available in the content view, such as formulas in a Microsoft® Excel® spreadsheet, by downloading native files in a LexisNexis Early Data Analyzer case from the Web interface.

Gain faster response times when viewing data within Web-enabled Early Data Analyzer—especially when working with a large number of search terms, sender domains or file type filter definitions.

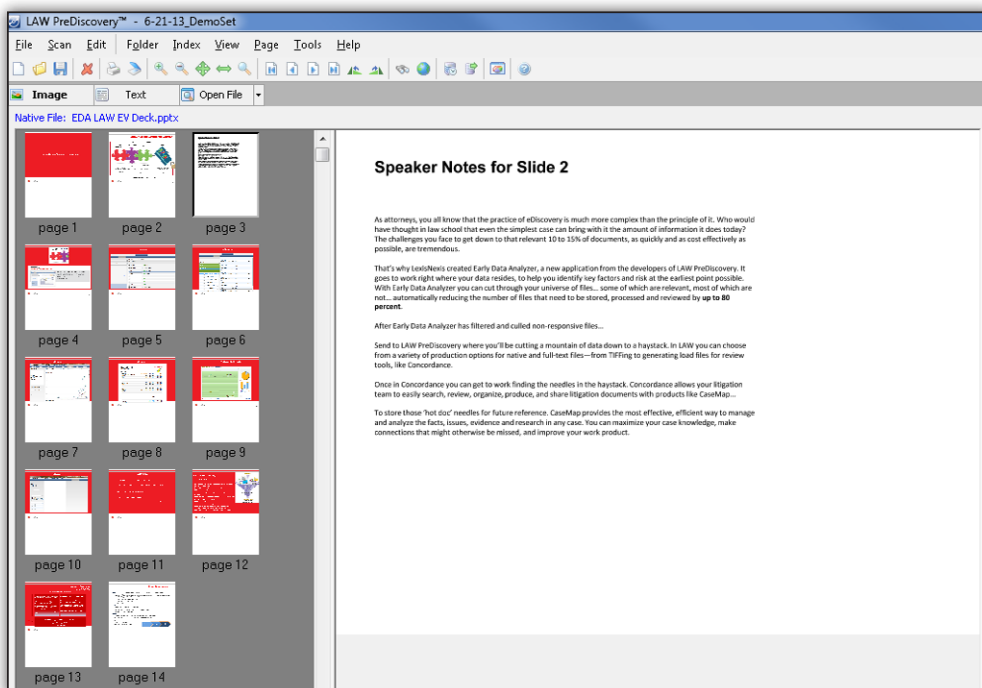
What's new in LAW PreDiscovery 6.4?

LexisNexis is committed to developing new and better LAW PreDiscovery capabilities while providing convenient integration—all based on feedback from customers. Here are the latest updates:

LexisNexis® Near Dupe integration into LAW PreDiscovery

Now LAW PreDiscovery enables you to group similar documents and potentially eliminate additional irrelevant documents. The software evaluates case data content based on thresholds that you specify and recognizes documents that are similar—for example, versions of a Microsoft® Word document edited over a period of time or saved as PDF files. This approach helps you organize the distribution of documents for review, speed e-discovery, ensure consistency during production and reduce costs related to hosting, review and more.

- **Easily integrate** OCR-only databases, extracted electronic text databases or common load files
- **Set parameters** for levels of document similarity
- **Group near-duplicate documents** based on a precise method of content comparison, rather than document format or “shingles,” or sets of words
- **Identify** the one document that is most representative within each near-dupe family
- **Generate a report** grouping near-duplicates, identifying the differences and helping you determine a review order
- **Withhold redundant documents** from export using a simple, one-step process
- **Manage costs** with our inclusive pricing rather than a per-document fee



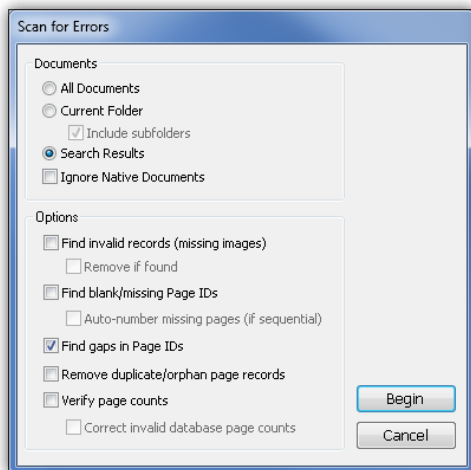
The latest TIFF/PDF conversion enhancement

LAW PreDiscovery now enables you to print Microsoft® PowerPoint® speaker notes as full pages rather than at the bottom of slides with other content. This makes it easier to review notes and helps you satisfy a U.S. Department of Justice requirement.

What's new in LAW PreDiscovery 6.4? (Continued)

Better Administrative Control

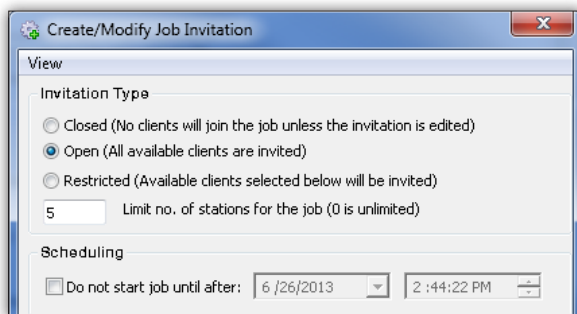
Process only necessary/relevant records when scanning your case for errors such as missing page IDs. An administrative feature enables you to restrict "Scan for Errors" to the current record set.



Scan for errors more efficiently.

Management Console Workstation Limits

Limit resources allocated to a loading or batch processing job without having to de-select checkboxes to manage "restricted invitations" and prevent all machines from joining jobs. Just use the LAW PreDiscovery Management Console to control your number of workstations.



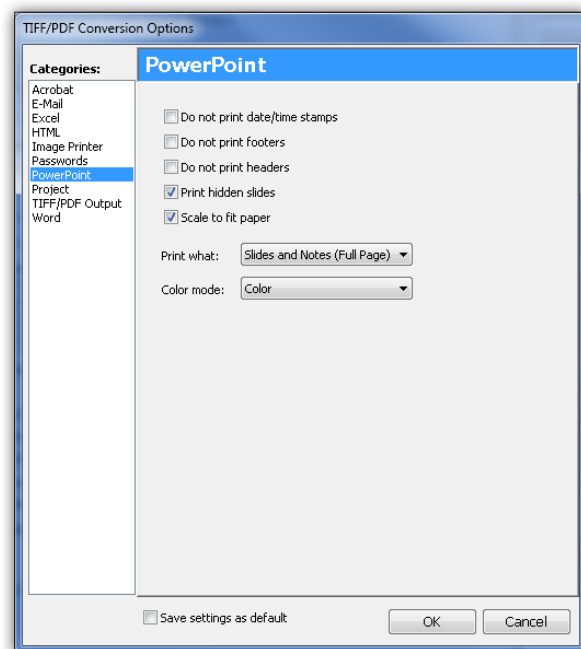
Easily control workstation allocations.

Migration of Storage for Search Reports to SQL Back End

Avoid manual intervention that was previously required when exceeding the 2 GB Microsoft® Access database size limitation.

TIFF/PDF Conversion Enhancement

Now you can print PowerPoint® speaker notes as full pages instead of at the bottom of slides with other content.



Gain more control over your PowerPoint speaker notes.

Experience both tools together.

For more information, visit

www.lexisnexis.com/litigation-earlydataanalyzer
or www.lexisnexis.com/litigation-lawprecovery.



LexisNexis and the Knowledge Burst logo are registered trademarks of Reed Elsevier Properties Inc., used under license. Concordance is a registered trademark and PreDiscovery is a trademark of LexisNexis, a division of Reed Elsevier, Inc. Other products or services may be trademarks or registered trademarks of their respective companies.
© 2013 LexisNexis. All rights reserved. BLT00434-0 0713