



NSW Court of Appeal Analyser

Lexis® Legal
Analytics

Uncover new insights.
Get the edge.



NSW Court of Appeal Analyser is the latest subscription solution in the continually expanding Lexis Legal Analytics* suite of products. Integrated with our award-winning legal research platform, Lexis Advance® and powered by our industry-acclaimed case set, CaseBase®, NSW Court of Appeal Analyser empowers you to uncover new insights from NSW Court of Appeal judgments – quickly and easily.

Introducing NSW Court of Appeal Analyser

Designed to make your analysis intuitive and immediately actionable, NSW Court of Appeal Analyser is cleverly structured around 4 core areas: People & Parties | Outcomes | Words & Phrases | Most cited



People & Parties

Find leading cases by representation, by judge and by party. View professional networks and profiles.



Outcomes

Find trends in case law based on judicial outcomes.



Words & Phrases

Find leading cases by words and phrases judicially considered in NSW Court of Appeal judgments. View judicially considered words and phrases by practice area, legislation and other dynamic filters.



Most cited

Find the leading cases relevant to your research. View cases by the number of times they have been cited by subsequent judgments.

New insights. Faster. Better.

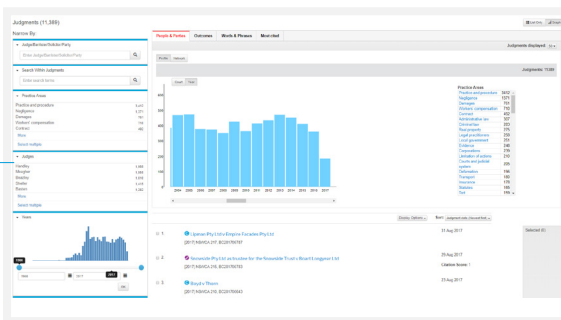
See new or previously hidden insights that others cannot. Refine your litigation strategy, go beyond traditional legal research, understand legal trends, better assess legal outcomes with confidence, and so much more.



People & Parties

Analyse profile and networks of participants in the litigation process.

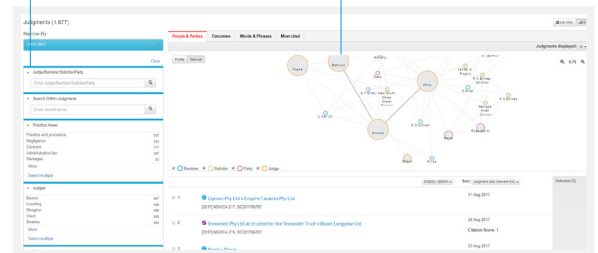
See litigation profiles of barristers and firms to form an effective legal team or better understand the opposing side.



Judge Analysis

Quickly isolates cases for a particular judge, provides information on prior rulings & aids in thorough preparation.

Uncover connections between judges, barristers, parties and firms.



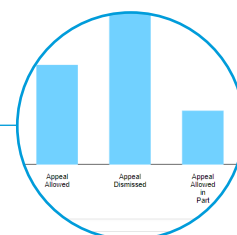
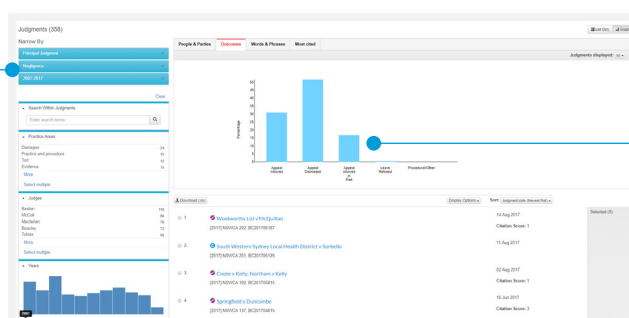
Outcomes

Uncover previous orders in your targeted area to better understand potential outcomes.

Judgments (358)

Narrow By:

- Principal Judgment
- Negligence
- 2007-2017



Make your legal research more efficient

Save hours of analysis: NSW Court of Appeal Analyser will dissect thousands of pages of NSW Court of Appeal judgments for you at the click of a button.



Words & Phrases

Quickly isolate words or phrases in their judicially considered context.

Dynamic filters to get you straight to the information you need

Cut through the noise: benefit from the power of smart technology and clever algorithms.

Download xls

Export search results to a spreadsheet to power your own analytics.

The screenshot shows the 'Words & Phrases' tab of the NSW Court of Appeal Analyser. On the left, there are dynamic filters for 'Word or Phrase', 'Search Within Judgments', 'Practice Areas', 'Judges', and 'Years'. The main area displays a list of judgments with a 'Download (xls)' button highlighted. A detailed view of a judgment is shown on the right, with a 'Citation Score' of 762 for a judgment dated 14 Sep 2001.

Customisable content display

Depending upon what you are interested in, you can easily customise your case list view to tailor to your precise needs.



Most Cited

Easily identify key cases in an area of law with just a few clicks.

Built-in interactive visualisations

Key insights at your fingertips - visualisation tools that highlight recency, frequency and treatment of cases.

Seamless integration with CaseBase

Subscribers to CaseBase will experience seamless access from the case list displayed on NSW Court of Appeal Analyser to CaseBase.

The screenshot shows the 'Most Cited' tab of the NSW Court of Appeal Analyser. On the left, there are dynamic filters for 'Negligence', 'Damages', '2007-2016', 'Search Within Judgments', 'Practice Areas', 'Judges', and 'Years'. The main area features a bubble chart visualization showing the frequency of cases over time (Date of Judgment). Below the chart is a list of top cases, including 'Gett v Tabet' (Citation Score: 92) and 'Elite Protective Personnel Pty Ltd v Salmon' (Citation Score: 69).

NSW Court of Appeal Analyser

It's about letting technology dissect thousands of pages of judgments for you, quickly and easily.
It's about understanding people and analysing their connections.
It's about assessing legal outcomes with confidence and making informed decisions.
Faster. Better.

This is simply powerful Legal Analytics at play.

Become the expert today with powerful analytics

LexisNexis® has done the hard work behind the scenes so you don't have to! Become an instant legal analytics expert without the need to be a data technology guru.

With our Legal Analytics suite of solutions, LexisNexis has taken an important step forward in the area of legal data analytics. By combining our comprehensive case datasets with machine learning and natural language processing technologies, NSW Court of Appeal Analyser goes beyond traditional legal research – helping legal professionals reach the most relevant insights, more easily and faster than ever before.

About Lexis® Legal Analytics

The Lexis Legal Analytics suite of innovative solutions support the data-driven lawyer of the future to help make better, faster informed decisions.

By developing leading-edge analytics solutions, LexisNexis helps legal professionals harness the power of data and access powerful insight – leveraging the breadth and depth of LexisNexis legal information – enabling legal professionals to:

- drive better advice for their clients and organisation.
- be more confident in predicting legal outcomes
- make better decisions for litigation planning and strategy.

Get your personalised demo and see for yourself!

Speak to your Relationship Manager today to arrange a demo and put this innovative analytics solution to the test.

Call 1800 772 772 | Visit www.lexisnexis.com.au/NSWCoA

