

Occupational Hygiene

AUTOMATE. CONDUCT. REPORT.

Automate time-consuming occupational hygiene survey tasks and reporting through seamless integration, with Lexis® GRC.

Why Lexis GRC?

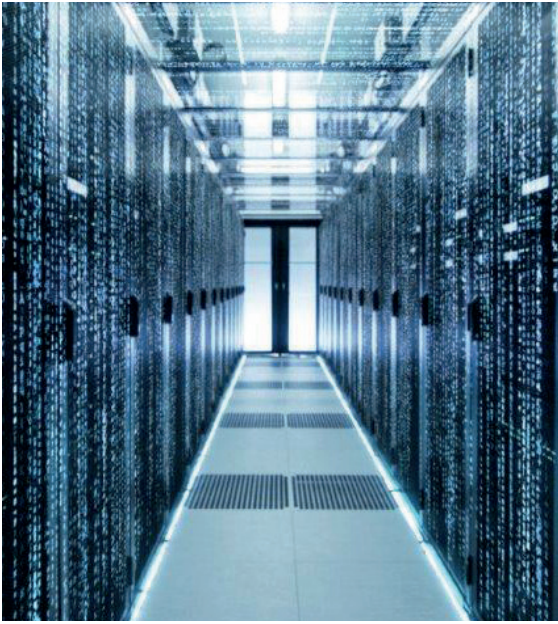
A comprehensive reputation protection solution supported by world-class regulatory content. It is the governance, risk, and compliance software that executive boards rely on. With a variety of modules available, you can customise your solution to meet your specific requirements.

Other Lexis GRC modules

- Auditing
- Compliance
- Enterprise Risk Management
- Forms and Checklists
- HIRA
- Incident Management
- Legal Universe & Registers
- Lexis® Assure Regulatory Alerts
- Occupational Hygiene
- Surveys



Create and complete surveys faster, generate reports instantly, and compare measured results over time.



Ensure continuous improvement over time. Store and consolidate your data for an in-depth overview of results overtime.

Plan all surveys

Choose the survey type required for each area of your business with Lexis® GRC.

Possible survey options include:

- Illumination
- Area noise
- Personal noise dosimetry
- Asbestos - inventory
- Asbestos - air monitoring
- Extraction ventilation
- Hazardous chemical substances sampling
- Vibration
- General ventilation and indoor air quality
- Hazardous biological agents

Instant preliminary reporting

Every report template is preconfigured so that every uploaded survey generates a preliminary report. They're also in line with industry standards, DOL requirements for AIA's and include compliance graphs, detailed information, and a results summary of key insights.

Fast, accurate measurements

With all formulas built into Lexis® GRC software, our occupational hygiene module automatically calculates results as soon as survey data is uploaded. Our formulas also determine exposure and compare your results to available legislative standards to ensure compliance.

The screenshot shows the LexisNexis GRC software interface. The main heading is 'Conduct Survey - Illumination: Production Plant'. On the left, there's a sidebar with a tree view showing 'Area Measurements' and 'Sub-Area Measurements'. The main content area has a 'Sub-Area' dropdown set to 'Dist-vault 2'. Below it, there's a 'Measurement Type' dropdown set to 'Artificial Illumination'. A 'Minimum Average Value of Maintained Illuminance' field is set to '100'. There's a 'Recommended Standard' field and a 'Statutory Requirement(s) / Recommended Standard(s)' section. At the bottom, there's a table for 'Measurement Values' with columns for 'Measurement value 1' through 'Measurement value 4'. A red 'Add new measurement data' button is at the bottom right.

Choose a value for money system that evolves with you. If you are looking to conserve resources, minimise risk and guarantee continuous improvement, don't start from scratch - contact LexisNexis today.

Real-time data capture.
Our convenient and user-friendly android mobile app allows you to capture real-time data, complete surveys, and sync results once you're online again.

The screenshot shows the LexisNexis GRC mobile app interface. The screen is titled 'Edit Measurement'. It has a 'Sub-Area' dropdown set to 'Reception Office (Computer Workstations)'. Below it, there's a 'Measurement Type' dropdown set to 'Daytime Illumination'. The app is running on an Android device, as indicated by the status bar at the top showing 'VoLTE' and '55'.