


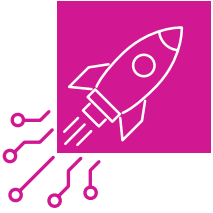
From Start to Finish

Your Checklist for Responsible Generative AI



A decorative graphic in the top right corner of the page, consisting of a network of interconnected nodes and lines. The nodes are small circles, and the lines are thin, creating a complex, web-like structure. The colors of the nodes and lines are a mix of light blue, teal, and yellow, set against a dark blue background.

Generative AI (GenAI) stands poised as a monumental breakthrough for the future of work, redefining the way organizations operate. Whether used for creating written or visual content, enhancing analytics, or fueling innovation, GenAI capabilities have transformative potential. Implementing such technology requires more than technical knowledge; it demands a strategic approach to empower a more productive workplace while mitigating ethical and data security/privacy risks. This checklist offers an overview of best practices for maximizing value from GenAI.



PRE-LAUNCH CONSIDERATIONS

- **Set your GenAI goals.**

Before diving in, carefully evaluate organizational or departmental needs and use cases. Prioritize implementation of GenAI based on how and where the ROI and productivity potential is greatest.

- **Get stakeholders aligned.**

Engage with all stakeholders, from senior management to end-users. Their buy-in will be crucial for successful adoption. In addition, address any reservations or misconceptions about GenAI upfront.

- **Establish guardrails to ensure safe and responsible use of GenAI.**

Mitigating risks associated with GenAI starts with informing end-users what is—and isn't—acceptable use. While powerful, GenAI needs to augment human capabilities, not replace them. Ensure there's always human oversight, especially in critical decision-making areas.

- **Select your GenAI models deliberately.**

Different models serve different needs. Choose a private model to protect proprietary data and

mitigate other data security risk. Depending on your resources, this could involve building a model in-house, implementing a ready-to-use tool, or tailoring a pre-trained application to meet your specific needs and security concerns.

- **Start with pilot tests.**

Implement GenAI in controlled environments before a full-scale rollout. Use the feedback from pilot tests to identify potential problems and then tweak and perfect the system.

- **Create a feedback loop.**

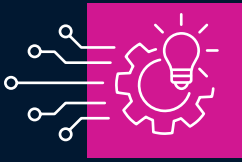
A constructive feedback mechanism during early phases helps in aligning the AI system with real-world needs. Regularly update the AI based on this feedback to ensure it remains effective and relevant.

- **Develop a regular cadence for auditing results for GenAI models.**

Not only can this help identify potential bias or skewed outputs, but it helps you fine-tune the data fueling GenAI to improve accuracy over time. It also helps ensure relevancy of the model as market dynamics shift.

Implementing a third-party tool?

Make sure you select a solution provider recognized as a credible, reliable data and technology partner.



ADOPTION CONSIDERATIONS

- **Demystify GenAI for your teams to close knowledge gaps**

Our recent “Future of Work” Survey reveals clear interest in the productivity boost GenAI offers, but not without some trepidation about output quality, transparency and, of course, job security. As Andrew Ng, former Baidu Chief Scientist and Google Brain Co-Founder, notes:

“**Adoption of AI in enterprises is not just about technology, it's about change management.**”

Consider organizing workshops to explain how GenAI works and its benefits. In addition, provide resources, tutorials, and courses for deeper dives for users or departments that will likely be the early adopters within the organization.

- **Establish a robust communication strategy**

Because of GenAI’s potential impact, you need to prioritize information sharing to maintain alignment among key stakeholders. Consider using newsletters and other communication channels to keep teams across the business, as well as the C-suite and investors, updated on GenAI advancements and achievements. In addition, make sure you maintain open channels for end users to ask questions or voice concerns.

- **Augment existing workflows**

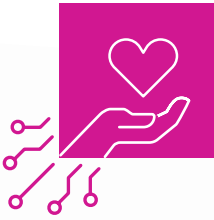
Disruption is an adoption-killer. When introducing generative AI, provide tools or plugins to facilitate a smooth transition.

- **Implement feedback mechanisms**

Create platforms where users can continuously provide feedback on the generative AI system’s performance. You can use this feedback to develop proactive strategies for system enhancements.

- **Celebrate milestones**

Positive reinforcement can boost morale and, consequently, adoption. Share success stories that highlight when you hit specific benchmarks or objectives and the tangible benefits being realized from these successes.



RESPONSIBLE USE CONSIDERATIONS

- **Be upfront about the extent and nature of AI usage.** By keeping users alert to when they interact with AI-generated content or solutions, you earn their trust. Consider adding disclosures or notifications, especially in customer-facing applications.

- **Regularly train your team on the responsible use** and potential ethical implications of generative AI. Awareness across the enterprise is a critical line of defense for spotting potential ethical red flags in generative AI use or outputs.

- **Implement a human-in-the-loop system.** Establish a testing, validation, and review system where human experts verify AI-generated content is accurate and appropriate. AI systems are only as good as the data they're trained on. Auditing generative AI responses is essential to ensure fairness and accuracy.

- **Use diverse and unbiased training data.**

Training AI using a wide variety of sources can help prevent unintentional biases, hallucinations, or misleading outputs.

- **Never compromise on user privacy.** If using customer data, anonymize and strip it of identifiable information.

- **Adhere to global and regional data protection laws,** like GDPR, to help avoid legal complications, costly fines and reputational risk.

A structured and mindful approach to implementing generative AI ensures its benefits are maximized while minimizing potential pitfalls. Always prioritize ethics, quality, and continuous improvement in the journey of AI integration.



Want to explore the future of work with GenAI further?

Download the [LexisNexis 2024 Future of Work Report](#) today.

LexisNexis.com/FutureOfWork | 1-888-466-3947

About LexisNexis® Legal & Professional

LexisNexis® Legal & Professional provides legal, regulatory, and business information and analytics that help customers increase their productivity, improve decision-making, achieve better outcomes, and advance the rule of law around the world. As a digital pioneer, the company was the first to bring legal and

business information online with its Lexis® and Nexis® services. LexisNexis Legal & Professional, which serves customers in more than 150 countries with 11,300 employees worldwide, is part of RELX, a global provider of information-based analytics and decision tools for professional and business customers.

LexisNexis, Nexis, and the Knowledge Burst logo are registered trademarks of RELX Inc. Other products or services may be trademarks or registered trademarks of their respective companies. ©2024 LexisNexis. All rights reserved. US-Data-AI-Checklist-Responsible-AI-Implementation-2024_0324

