

Installing CaseMap

User Guide

CaseMap®, Version 13

- **Preliminary Planning**
- **Installing CaseMap**



CaseMap Installation Guide

No part of this work may be reproduced or transmitted in any form or by any means, electronic or mechanical, including photocopying, recording, or by any information storage or retrieval system, without permission.

While the information contained herein is believed to be accurate, this work is provided "as is," without warranty of any kind. The information contained in this work does not constitute, and is not intended as, legal advice.

LexisNexis and the Knowledge Burst are registered trademarks of Reed Elsevier Properties Inc., used under license.

TextMap is a registered trademark of LexisNexis, a division of RELX Inc. Other products or services may be trademarks or registered trademarks of their respective companies.

© 2017 LexisNexis. All rights reserved.

CaseMap®
DocPreviewer™
DocManager™
CaseMap® Server
TextMap®
TimeMap®
Sanction®
Concordance®

Version: CaseMap® 13

Release Date: September 26, 2017

Table of Contents

Chapter 1 Installing CaseMap	5
1 Preliminary Planning for CaseMap	5
About preliminary planning	5
Before installation	7
System requirements	10
2 Installing CaseMap	11
Installing CaseMap	11
Registering the CaseMap Server in CaseMap	23
Converting local cases	26
Updating CaseMap versions	28
Index	29

Installing CaseMap

User Guide

Installing CaseMap

Chapter

1

Installing CaseMap

Preliminary Planning for CaseMap

About preliminary planning

Preliminary planning for implementing any software application is important for achieving the best set-up results, the first time. We recommend that you take some time to review and plan how your organization will be using CaseMap, especially if you are also installing the CaseMap Server, the CaseMap Admin Console, and the CaseMap SQL Import Utility. Planning ahead helps ensure that administrative tasks are minimized for initial setup and your long-term maintenance of the application and its companion products.

[Plan before you install CaseMap](#)

Before installing CaseMap and the CaseMap Server, the CaseMap Admin Console, and the CaseMap SQL Import Utility, we recommend you review the following checklist to ensure you have not missed any steps in planning details.

Best Practices: Preliminary Planning

System Requirements / Licensing

Review system requirements and licensing options

Network Directory Setup

Ensure CaseMap users have full network access to case network folders where local cases are stored, or have SQL cases assigned to them in the CaseMap Admin Console

* CaseMap does not support/encourage VPN access to network files, which can cause user access issues unless it is installed on CITRIX. Remote users need a replica copy of the case installed on their hard drive.

Have preset folders for each client/matter

Server Setup and Security

Implement server firewalls

Set up CaseMap security in CaseMap and the CaseMap Admin Console using Windows or simple authentication

*We recommend that you use Windows authentication for SQL cases

Enable security and require logons for all CaseMap cases

Implement password policies

Use private IP via VPN access

Receiving Data and Images

Have a data collection and processing plan in place

Verify that file formats are recognized in CaseMap

Have a directory location with subdirectories in a structure that prepares you for optimal organization of the various cases, image source files, templates, reports, and backups for each

Case File Design

Create local case templates for different types of cases or to retain specific spreadsheet fields and views

* For information on creating SQL case templates, refer to the CaseMap Server documentation.

Implement field name conventions for consistency

Implement short name conventions for consistency

Customize the Intake Interview Jumpstart Form for your organization's needs

Managing Clients/Users

Inform users of training options, immediately

Identify any remote staff that may need access to cases on your network or require replicas of cases

© 2017 LexisNexis. All rights reserved.

Install native viewer applications for users who need to view documents and files that are linked to case records in CaseMap

Create email templates for clients to use the Intake Interview Jumpstart Form

Plan case design and structure in advance

Designing cases is a necessary planning phase that ensures consistency in structure, naming conventions, security, user permissions, etc. The more forethought you apply to designing case templates and user roles for implementing security, the easier it is for you and other administrators to identify any irregularities that may occur.

Consistency is key when it comes to field naming conventions, use of field types, and spreadsheet field placement in CaseMap cases. When field guidelines are established, it is less confusing for users and administrators who are working in multiple cases.

For more information, see [Before creating cases](#) and [About cases](#).

Determine a clear migration path for cases

If you are using CaseMap Server, a migration path for importing cases from previous CaseMap versions is essential. You should only migrate a case to a CaseMap Server case once. If you experience an issue during the import, you can try migrating the case again. Each SQL case requires its own SQL database.

For more information, refer to the [CaseMap Server](#) documentation.

Related Topics

[Before installation](#)

[CaseMap system requirements](#)

Before installation

Review the following information to understand the installation and implementation process. If you did not buy CaseMap Server, you only need to install or upgrade the CaseMap client application.

Installing CaseMap involves the following:

- CaseMap client application installed on local machines
- CaseMap Server (optional, for clients who want to create SQL cases)
- CaseMap Admin Console (optional, for clients who want to create SQL cases)
- CaseMap SQL Import Utility (optional, for clients migrating existing local cases to SQL cases)

Implementing CaseMap with CaseMap Server can involve one or more of the following:

- Configuring SQL Server for CaseMap Server installation
- Creating network folders to store local cases or creating SQL servers and SQL cases in the CaseMap Admin Console
- Applying network folder and field level security for local cases in CaseMap or setting up

- users, roles, and permissions in the CaseMap Admin Console for SQL cases
- Assigning users to SQL cases in the CaseMap Admin Console
- Creating network folders to store case documents and other related files (audio, graphics, etc.)

Learn how CaseMap licensing works

The licensing options for CaseMap include:

- **Single seat** — A lower cost option for clients
- **Multi-seat** — Allows for installation on both PCs and the application server
- **Enterprise** — Allows for 400+ users and includes discount options

Review the system requirements

Please review the current [system requirements](#) for setup considerations for your processor and RAM. Review each section in advance before making expensive hardware and network decisions that may not be in line with LexisNexis recommendations.

Please keep informed of CaseMap release updates and how they impact your system by checking our CaseMap Web site at <http://www.lexisnexis.com/casemap>.

Store local cases on network for staff access

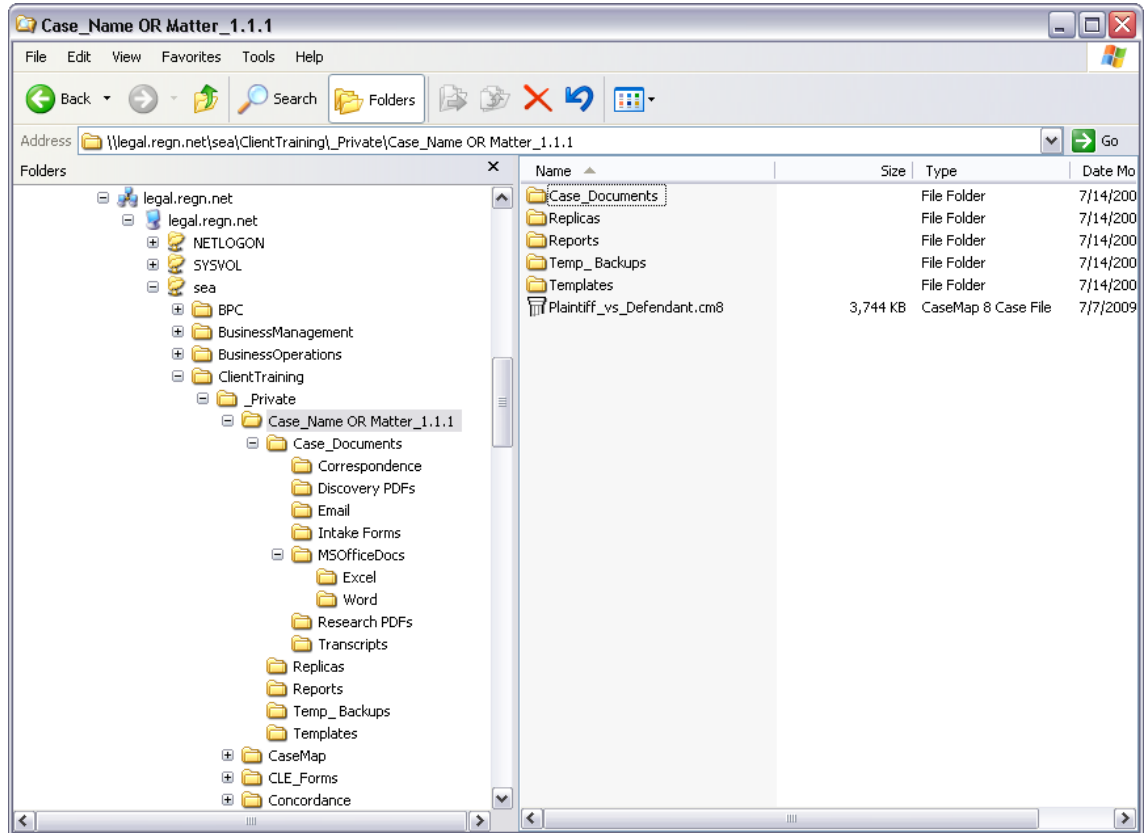
Local cases should be stored on the network where all case users can access the file. Local cases should be stored by case name or matter, or according to your organization's internal guidelines.

If there is no network setup or only one individual is using a case, the case can be stored locally on a user's hard drive. In this instance, nightly back-ups of the case should be made to a flash drive or portable hard drive, or in a network folder. In this scenario, other users cannot access the case without using a replica copy. Synchronizing data with the primary case should then occur regularly.

Use directory folder naming conventions

Most organizations have network directory design guidelines already in place for storing information in a consistent manner. We recommend that you consider our example while you review your own.

The following example reflects folder naming conventions and directory hierarchy for storing cases, documents, replica cases, backup files, etc.



If you are planning to move a local case to a new directory location, and want to ensure that it is still accessible to users, build a directory template structure that is easy to relocate.

Apply folder security to local cases to control access

Local case security is applied by controlling access to cases saved in directory folders on your LAN. Grant folder access to only those users working on a particular case. In this manner, you are preserving case integrity by preventing others from reviewing your case information and strategy.

Set up users and assign cases/roles for access

All users must be added to a case in order to access it within CaseMap or be assigned to a SQL case in the CaseMap Admin Console. Having a CaseMap license does not grant a user permission to open a case.

We also recommend that you require users to set passwords. Users can set and change their passwords at any time. If a user of a local case has forgotten a password, contact CaseMap Support to have it reset. If a user of a SQL case has forgotten a password, he or she should contact their case database administrator.

Determine a clear migration path for cases

If you are using CaseMap Server, a migration path for importing cases from previous CaseMap versions is essential. You should only migrate a case to CaseMap Server once. If you experience an issue during the import, you can try migrating the case again. Each SQL case requires its own SQL database.

For more information, refer to the [CaseMap Server](#) documentation.

Related Topics

- [About preliminary planning](#)
- [CaseMap system requirements](#)

System requirements

Please review the current system requirements for setup considerations and suggestions. Review each section in advance before making expensive hardware and network decisions that may not be in line with LexisNexis CaseMap recommendations.

Please keep informed of CaseMap release updates and how they impact your system by checking our Web site at www.lexisnexis.com/casemap.


- ✎ When setting up users for local cases, ensure that all users have full network access to each case directory they need to access. When setting up users for SQL cases in the CaseMap Admin Console, ensure that users are assigned appropriate roles and assigned to the cases they need to access.


[CaseMap Client Application v13.0](#)

CaseMap must be installed and run on a local hard drive. CaseMap cannot be run from a network server. CaseMap data can either be stored in a file on a network drive or in a Microsoft® SQL Server® database. You must be logged on with admin rights to install CaseMap.

- 1 GHz or faster 32-bit (x86) or 64-bit (x64) processor
- 4 GB RAM or greater
- Approximately 1 GB of free disk space on the system drive
- Super VGA (800 x 600) or higher-resolution monitor with 256 colors
- Microsoft Internet Explorer® v6.0+ is required for Send to CaseMap functionality
- Any of the following versions of Microsoft Windows®:
 - Microsoft Windows 2008 Server®
 - Microsoft Windows 2012 Server®
 - Microsoft Windows 2016 Server®
 - Microsoft Windows Vista®

Microsoft Windows® 7
Microsoft Windows® 8
Microsoft Windows® 10
Microsoft Office 2016®

 You can install the latest CaseMap client application version to a desktop that already has previous versions of CaseMap installed. It will not remove the prior version.

 When prompted to enter an URL for the CaseMap Server (optional), please enter a URL ending with CMServerClient.svc. CaseMap Server is required to work with SQL cases.

Related Topics

[About preliminary planning](#)

[Before installation](#)

Installing CaseMap

Installing CaseMap

The CaseMap client application is installed to the Microsoft® Windows® desktop of any CaseMap user. If you are using the CaseMap SQL version, the install utility will prompt you to enter the URL to the CaseMap Server. The URL should end with CMServerClient.svc.

CaseMap installs as an unregistered trial copy. There is a 30-day grace period to use CaseMap. Once the grace period expires, CaseMap will no longer function. The unregistered copy of CaseMap works identically to the registered version. If you are reinstalling over a registered version of CaseMap, you will not need to re-register.

CaseMap client installation overview:

- CaseMap must be installed and run on a local hard drive
- CaseMap cannot be run from a network server
- You must be logged on with administration rights to install CaseMap
- CaseMap data files can be stored in a file on a network drive or in a Microsoft® SQL Server® database
- Previous version cases must be converted to open in the current CaseMap version
- DocPreviewer and DocManager are downloaded as part of CaseMap (optional subscription CaseMap plug-ins)
- Microsoft Word and Microsoft Outlook plug-ins (optional during installation)

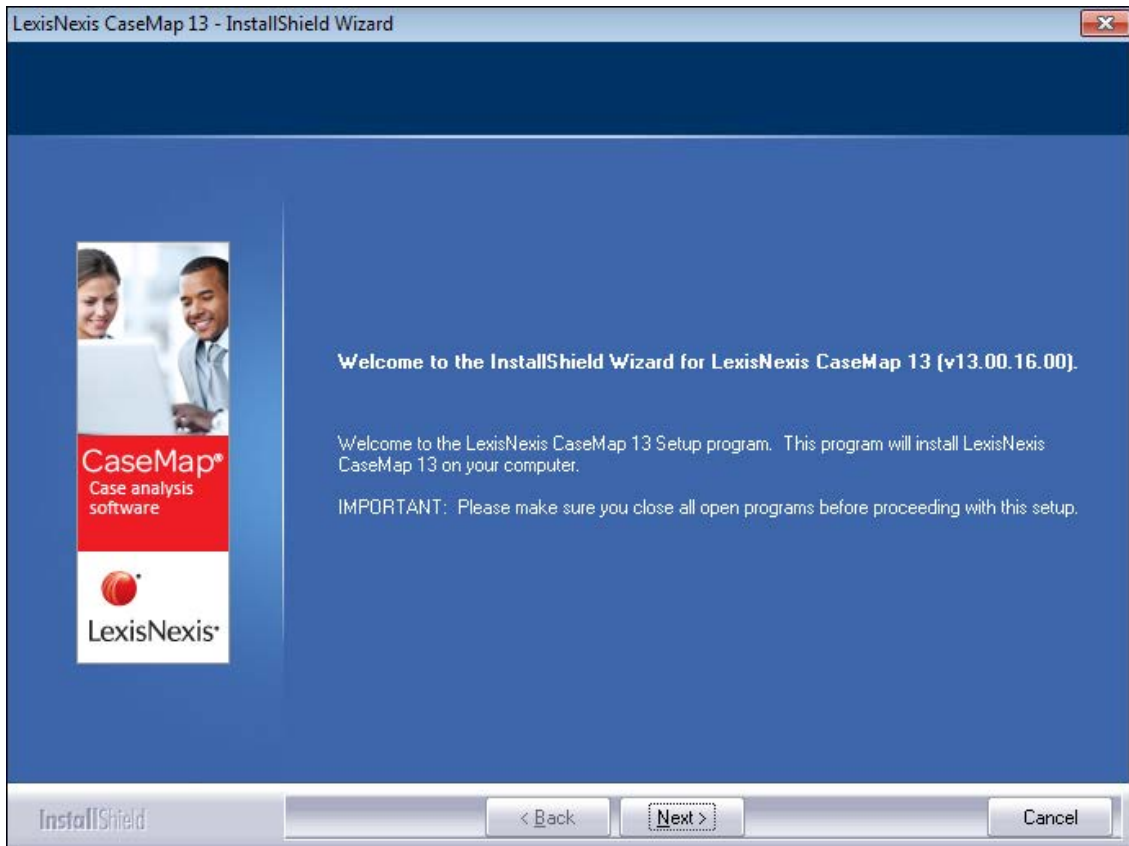
⚠ Cases need to be converted to the current version format. Once a case is converted, users with previous CaseMap versions cannot open it. We recommend you upgrade all CaseMap users working in the same case at the same time. For details, see [Converting cases](#).

⚠ Installing a new version of CaseMap replaces any current installation of the Send to CaseMap plug-in for Adobe Acrobat with a new version. The new Send to CaseMap plug-in may work in earlier versions of CaseMap, though some features may be disabled. We recommend that you do not upgrade to a new version of CaseMap until you are ready to stop using earlier versions of the product and can migrate previous version cases to the current CaseMap version.

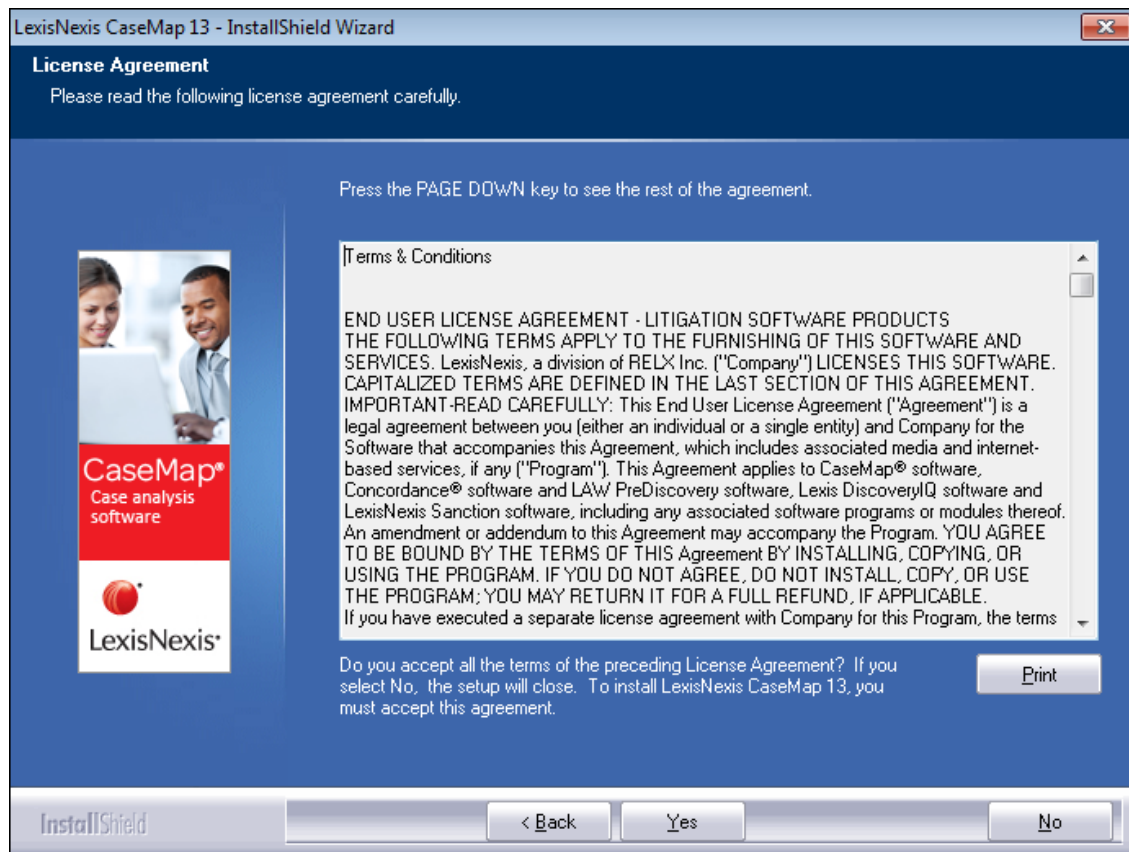
✔ You can install the latest CaseMap client application version to a desktop that already has previous versions of CaseMap installed. It will not remove the prior version.

To install CaseMap

1. Double-click on the **CM13Setup.exe** icon to launch the CaseMap Install utility.
2. When the **InstallShield Wizard** launches, click **Next**.

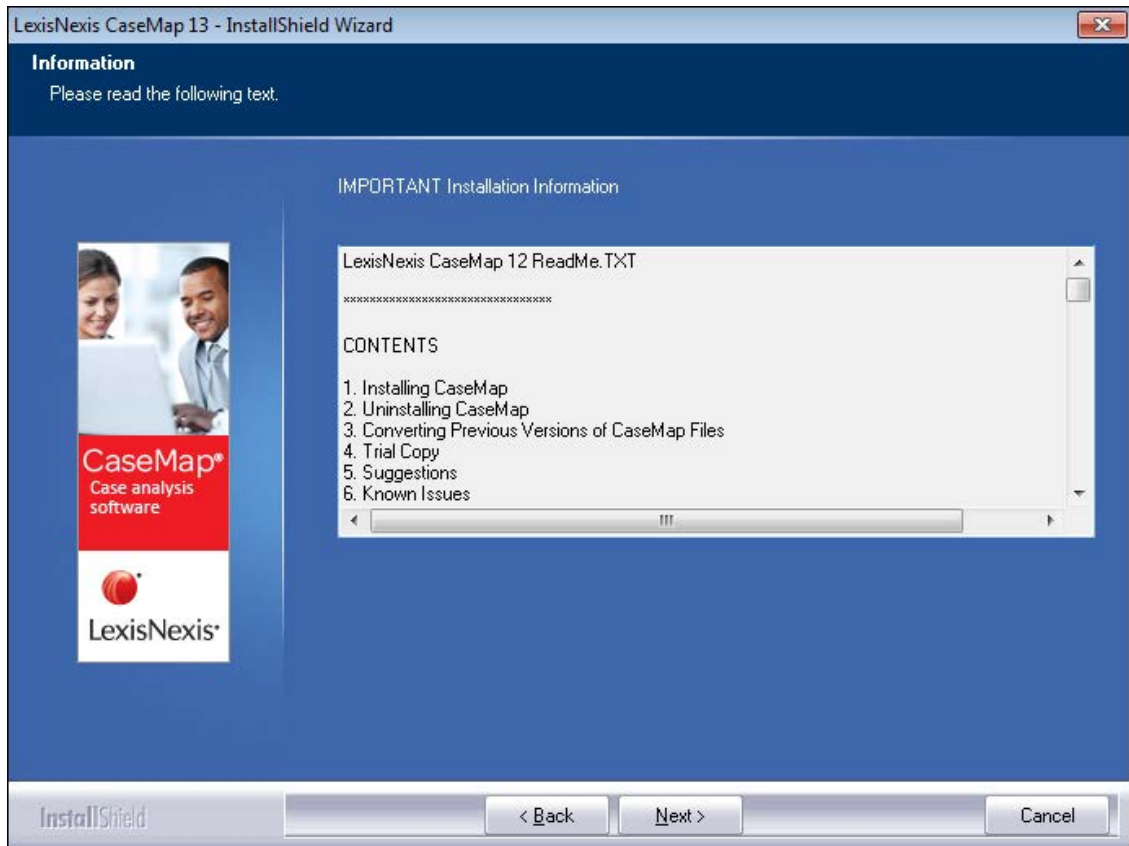


3. In the **License Agreement** dialog box, click **Yes**.



Click Print if you want to print a copy of the license agreement.

4. In the **Information** dialog box, review the installation information, then click **Next**.



- 5. In the **Default CaseMap Server** dialog box, type in the CaseMap Server in the **Name** field.

This dialog box only displays if you are installing CaseMap Server.

LexisNexis CaseMap 13 - InstallShield Wizard

Default CaseMap Server

Enter the default CaseMap Server name and URL below. The URL should be a valid CaseMap Server Client endpoint, e.g. http://SERVER NAME/CMserver/CMserverClient.svc

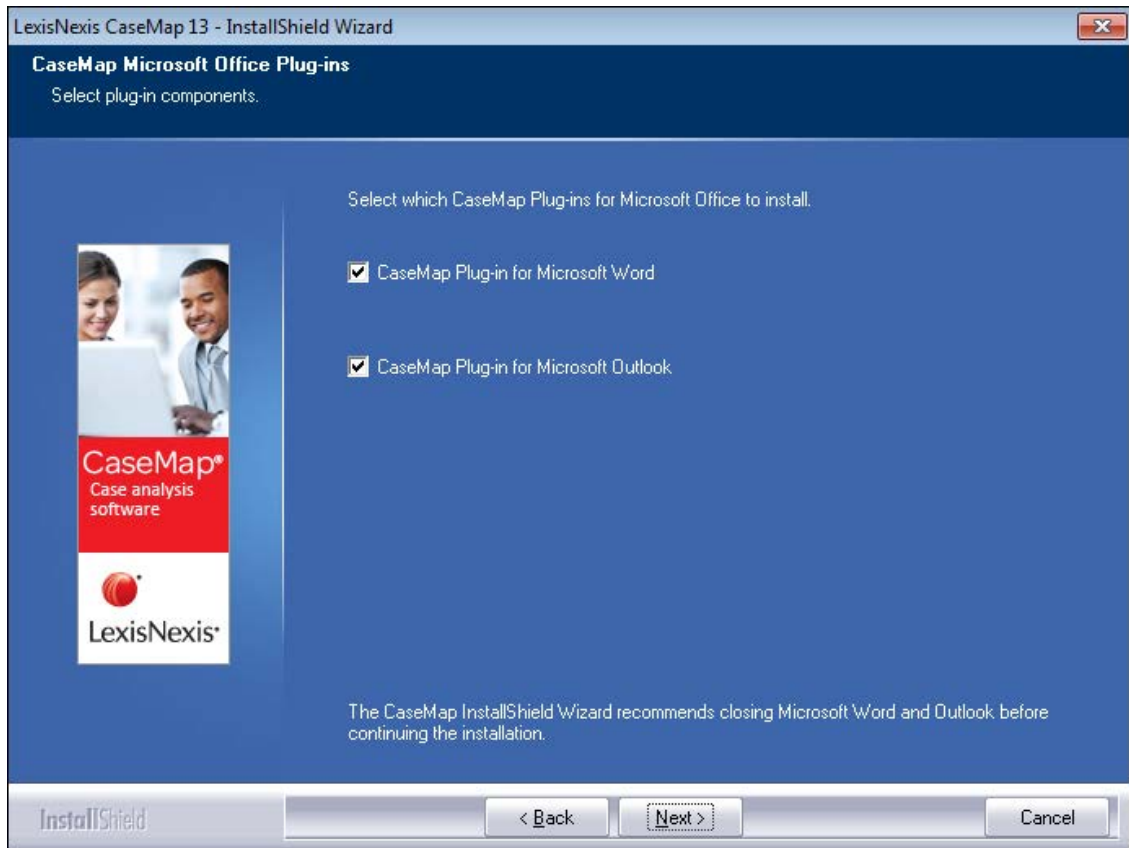
Name:

URL:

InstallShield

In the **URL** field, type in the name of the server URL, then click **Next**.

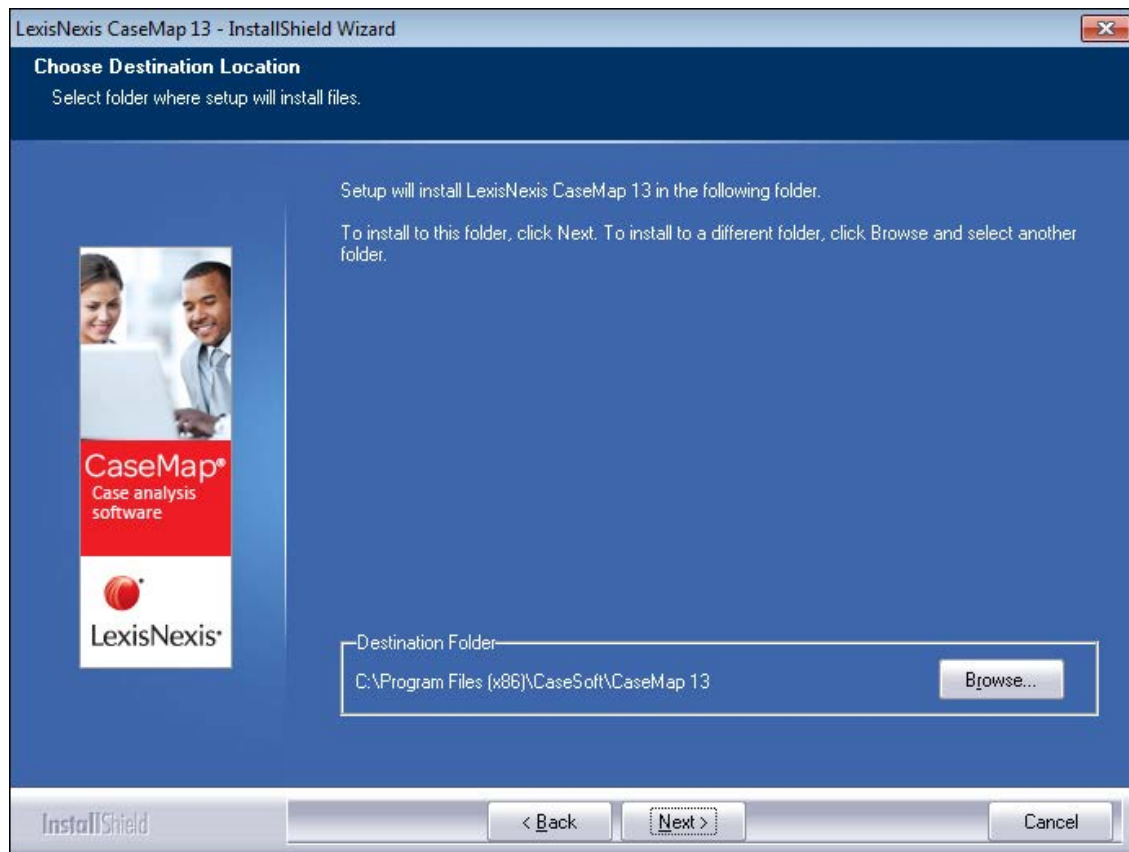
6. In the **CaseMap Microsoft Office Plug-ins** dialog box, select the the check for each plug-in you want to install: **Microsoft Word** and **Microsoft Outlook**.



Microsoft Office plug-ins allow case users to send data from Word or Outlook to a case.

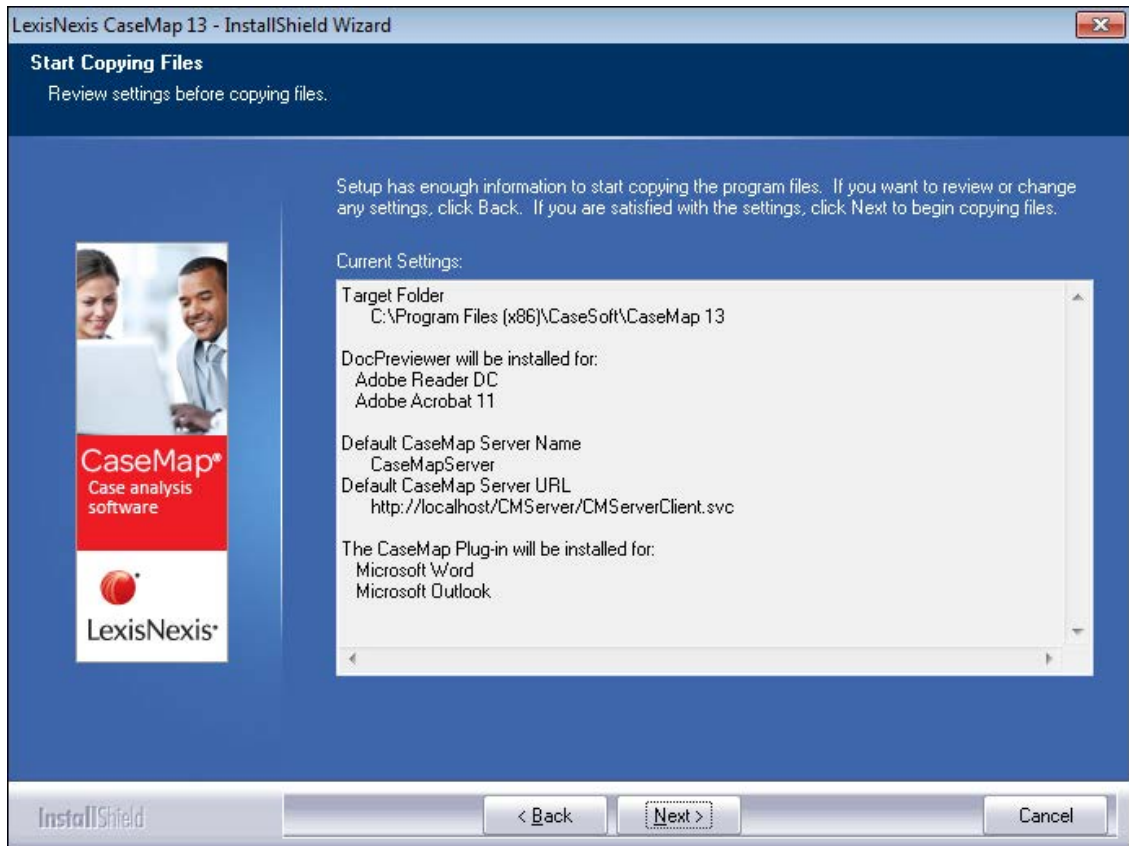
Clear the check box for a plug-in you do not want installed.

7. In the **Choose Destination Location** dialog box, verify whether the default destination folder is the appropriate location, then click **Next**.



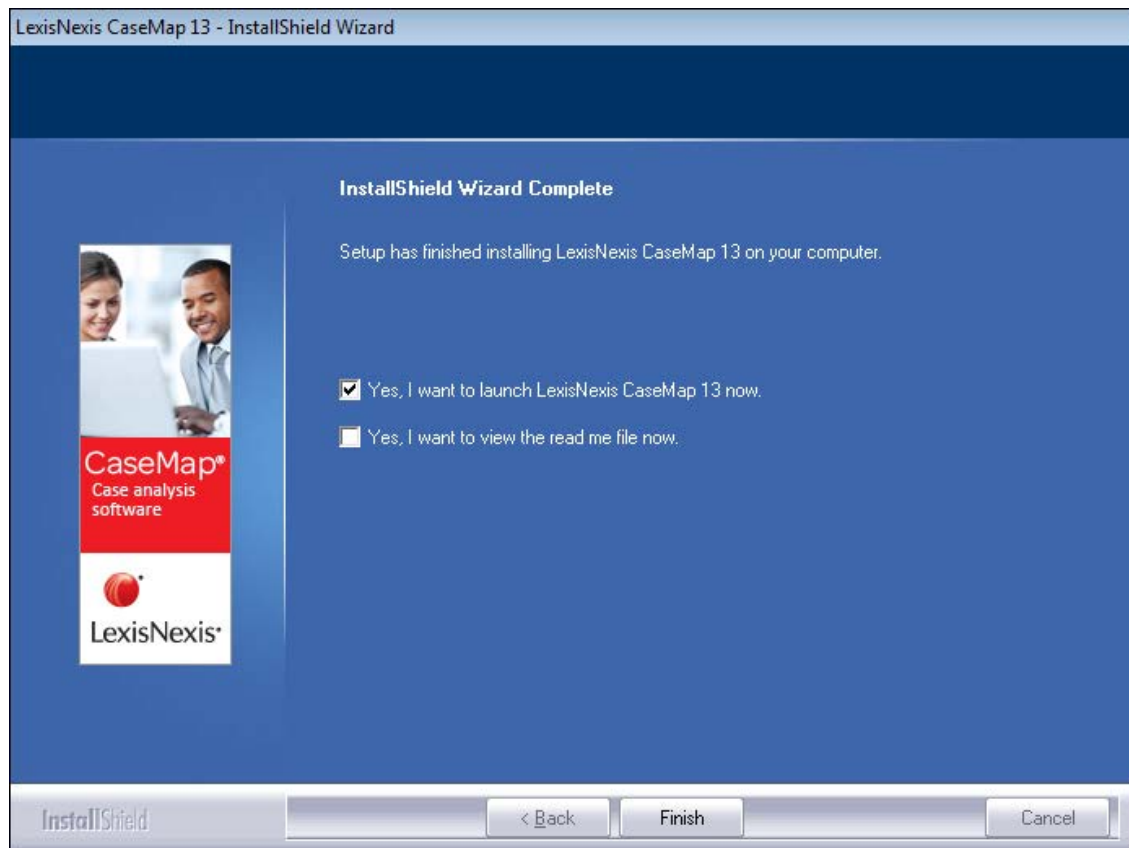
The default folder is C:\Program Files [x86]\CaseSoft\CaseMap 13.

7. In the **Start Copying Files** dialog box, review the current settings, then click **Next**.



Please wait while the new software is being configured.

8. In the **InstallShield Wizard Complete** dialog box, select the **Yes, I launch LexisNexis CaseMap 13 now** check box.



9. Optional: Select the **Yes, I want to view the read me file now** check box, if you want to do so at this time.
10. Click **Finish**.
11. In the **Welcome to CaseMap** dialog box, select **Activate CaseMap**.



11. Click **Continue**.
12. In the **CaseMap 13 Software Activation** dialog box, click **Next** to open the **Enter your registration information** dialog box.

CaseMap 13 Software Activation

Step 1. Enter your registration information.

Registration Name:

Registration ID:

Product ID:

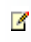
You must be registered with LexisNexis as a valid user of this software to have this registration information. When you register with LexisNexis you should receive this information via email or phone.

Select Back if you have lost or do not have your registration information.

< Back Next > Cancel

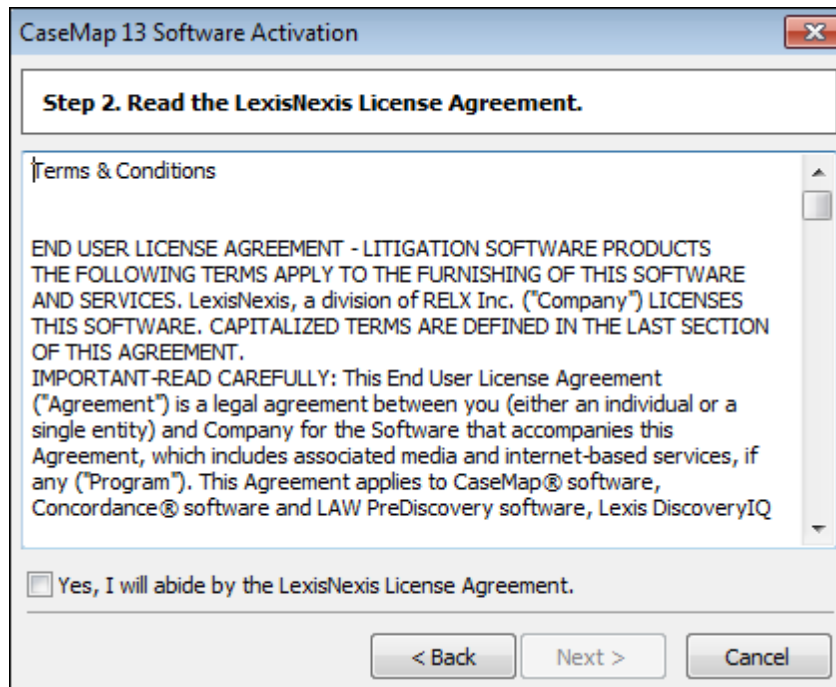
13. In the **Registration Name** field, type in your user name for license registration.
14. In the **Registration ID** field, type in your registration ID.

15. In the **Product ID** field, type in the CaseMap license number.

 You must be registered with LexisNexis as a valid user of this software to have this registration information. When you register with LexisNexis, you should receive this information via email or phone.

16. Click **Next** to continue.

17. In the **Read the LexisNexis License Agreement** dialog box, read the license agreement and then select the **Yes, I will abide by the LexisNexis License Agreement** check box.



18. Click **Next** to continue.

19. In the **How do you want to activate this product** dialog box, select the activation option you want to use.



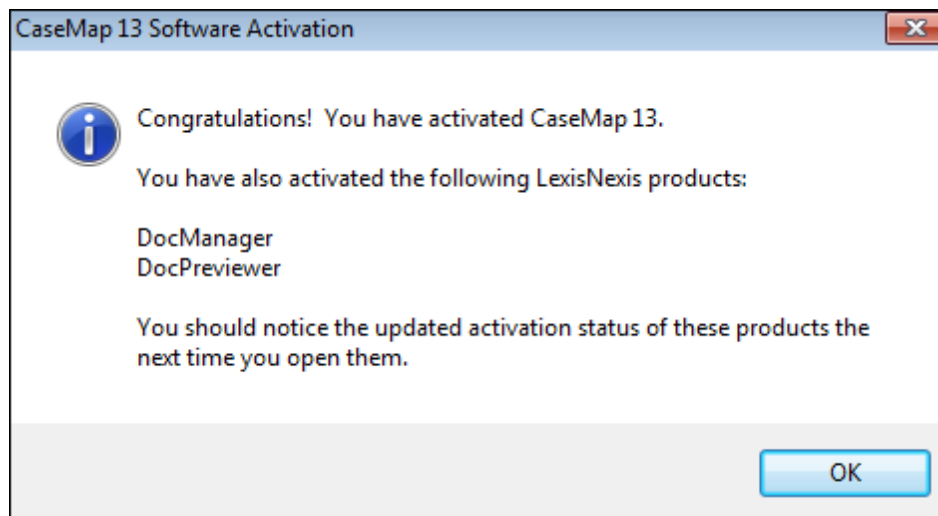
- Activate software online — Use this option to activate online with an active internet connection.
- Activate by web browser or phone — Use this option if you received an activation key via email.

20. Click **Next** to continue.

21. In the **Summary of online activation transmission information** dialog box, review the license registration information.

22. Click **Finish**.

23. In the message box confirming CaseMap activation, click **OK**.



Installation is complete. CaseMap now automatically launches and you can begin using it.

Related Topics

- [About preliminary planning](#)
- [Before installation](#)
- [System requirements](#)
- [Registering the SQL server in CaseMap](#)
- [Converting local cases](#)
- [Updating CaseMap versions](#)

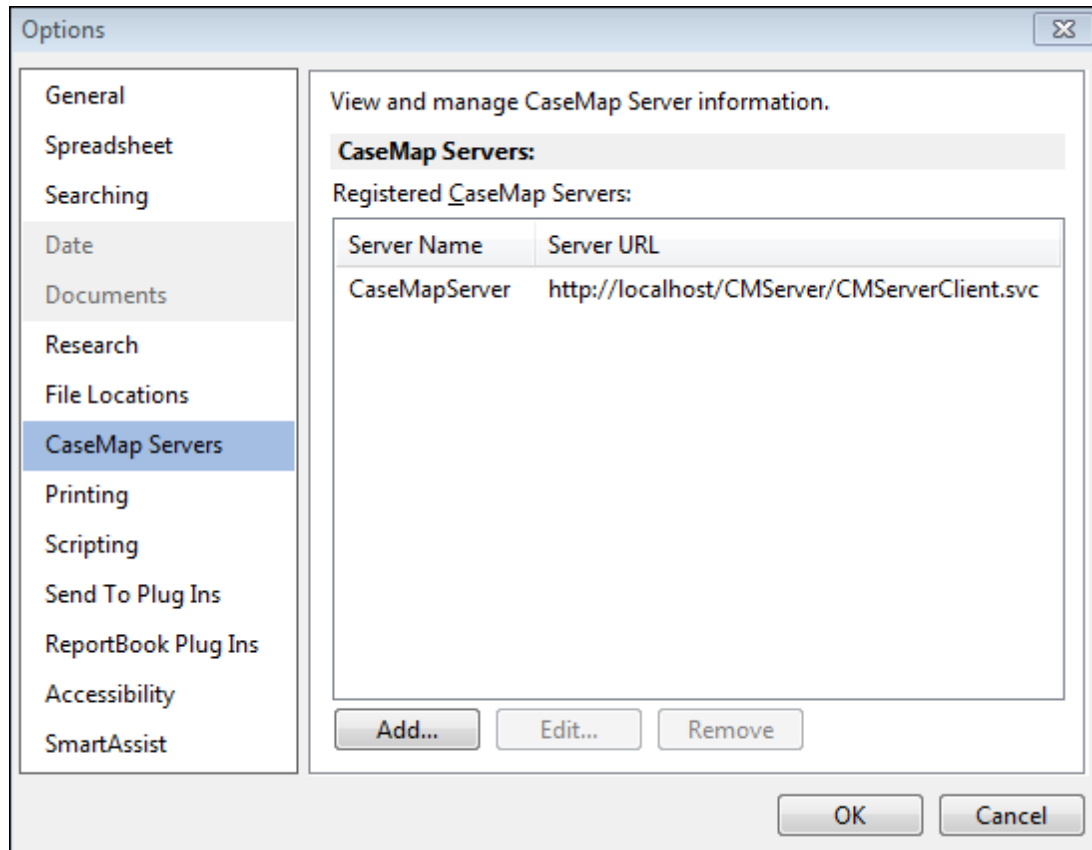
Registering the CaseMap Server in CaseMap

If you are using CaseMap with CaseMap Server and did not register a server during CaseMap installation, you will need to register a CaseMap Server in the client application in order for users to access SQL cases in CaseMap.

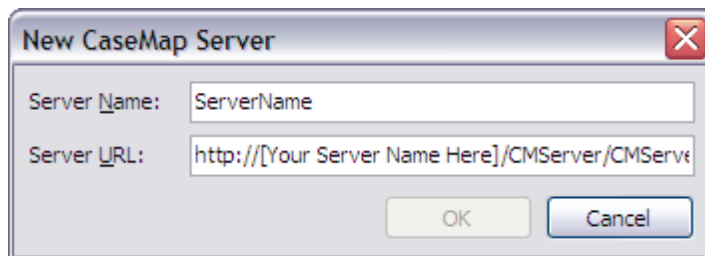
For more information about CaseMap Server, refer to the [CaseMap Server](#) documentation.

To register a CaseMap Server in CaseMap

1. On the **File** menu, click **Options**.
2. In the **Options** dialog box, click the **CaseMap Servers** tab.



3. Click the **Add** button.
4. In the **New CaseMap Server** dialog box, type in the client server address in the **Server Name** field.



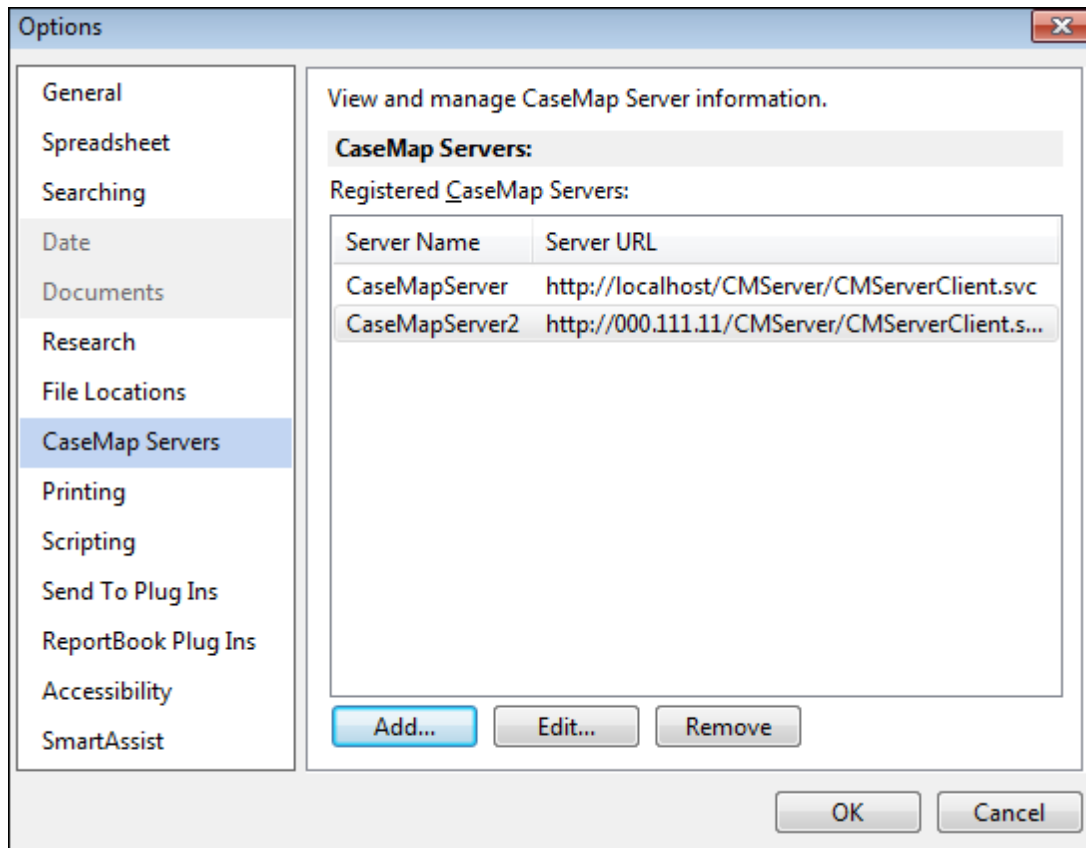
5. In the **Server URL** field, type in the path to the server, then click **OK**.
For example: *http://[Your Server Name Here]/CMServer/CMServerClient.svc*.
6. Click **OK** when you are finished.

The server you registered now displays in the Registered CaseMap Servers box.

To edit a CaseMap Server in CaseMap

1. On the **File** menu, click **Options**.

- In the **Options** dialog box, click the **CaseMap Servers** tab.



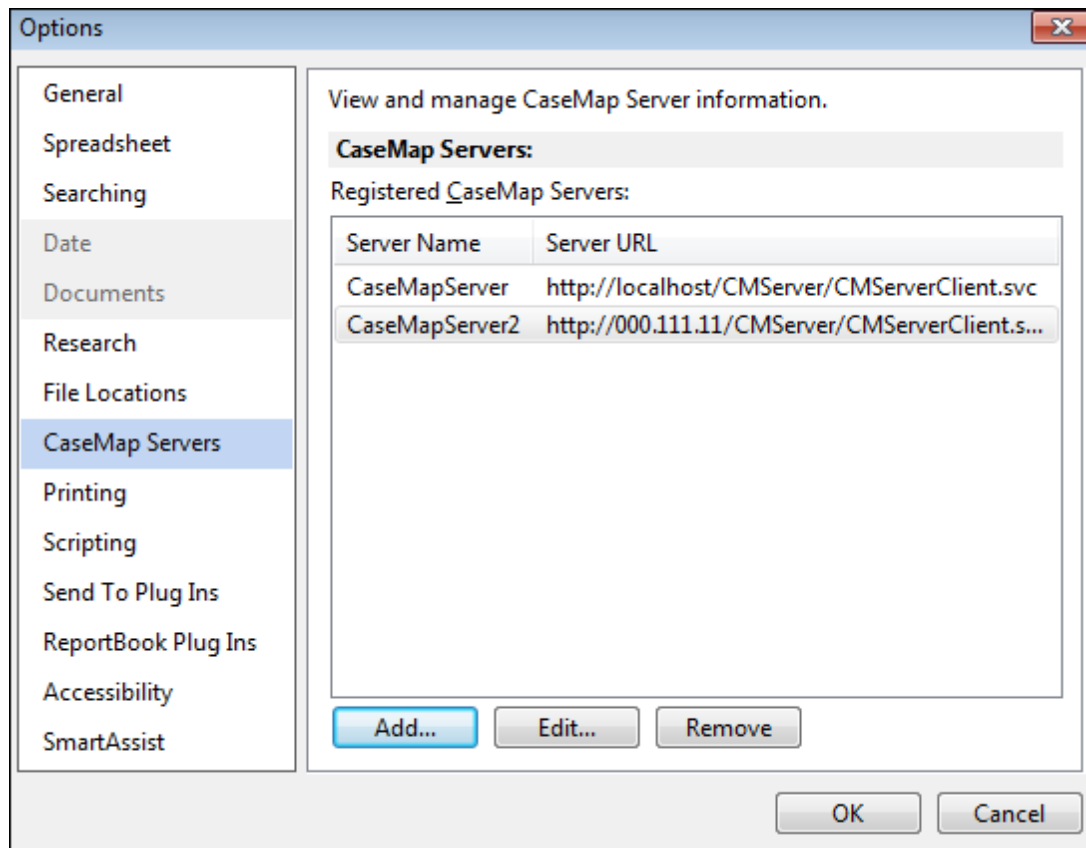
- In the **Registered CaseMap Servers** box, select the server you want to edit.
- Click the **Edit** button.
- In the **Edit CaseMap Server** dialog box, modify the server name or server URL, then click **OK**.

The changes now display in the Registered CaseMap Servers box.

- Click **OK** to save your changes.

To remove a registered server in CaseMap

- On the **File** menu, click **Options**.
- In the **Options** dialog box, click the **CaseMap Servers** tab.



3. In the **Registered CaseMap Servers** box, select the server you want to remove.
4. Click the **Remove** button.

The selected server no longer displays in the Registered CaseMap Servers box.

5. Click **OK** to save your changes.

Related Topics

[Installing CaseMap](#)

Converting local cases

CaseMap continues to allow you to convert previous version cases to the new current release version. For example, you can upgrade a CaseMap v12.0 case to a CaseMap v13.0 case and have it still write to a Microsoft® Access database. Use the CaseMap SQL Import Utility to migrate local cases to SQL cases.

When upgrading a previous version case to a new version, CaseMap recognizes the older case

format, such as a CaseMap v12.0 file (.cm12 extension) and offers to convert it to the new version format for you. It only takes a minute or so to convert previous cases to the new CaseMap format.

During the conversion process, CaseMap does not change anything in your existing CaseMap file. It creates a brand new case and copies all information from the old case into the new one. Additionally, CaseMap changes the file extension of the older version, such as .cm10 to .001. This change keeps users from inadvertently reopening the old case and using a previous CaseMap license.

If a case already exists with the same name and extension, the numbers will increment to ".002" and ".003" to ensure a unique name. We recommend that you inform case staff when the import is complete and that the original case is now renamed.

✍ Previous versions of CaseMap are not used during the conversion process, so you can uninstall them at any time.

⚠ Once a case has been converted to a new version format, users can no longer access it using an older CaseMap version. We recommend that all users get new versions installed at the same time.

To convert cases to a new CaseMap version

1. On the **File** menu, click **Open**.
2. Click **Computer**, to open the **Open Local Case** dialog box.
3. In the **Open Local Case** dialog box, select/click on the case you want to convert to the newer version of CaseMap.
4. In the message box, review the selected case information, then click **OK**.
5. In the **Select the name and location of the converted case file** dialog box, ensure the File name for the case to be updated is correct/desired, and then click **Save**.
6. In the message box confirming case conversion, note the location of the file, and then click **OK**.

The message box displays the directory location of the original case and its new file extension.

Related Topics

[Installing CaseMap](#)

[Updating CaseMap versions](#)

Updating CaseMap versions

When you receive notification that a current version of CaseMap has an update available, you can quickly download it to ensure you have the latest tools and fixes needed for using CaseMap successfully.

IT staff and litigation support professionals should alert users when they are eligible to receive a new version of CaseMap for their licenses. The latest version can be downloaded at www.lexisnexis.com/casemap by following the instructions for installing CaseMap.

Once you have updated CaseMap, review the What's New topic for release information detailing feature enhancements for the version you are now using.

To update CaseMap

1. Verify that the computer you are using has an active Internet connection for the update.
2. Open **CaseMap** on the desktop for the license holder needing the update.
3. On the **File** menu, click **Help & Info**, and then click **Update CaseMap**.
4. In the **CaseMap WebUpdate** dialog box, click **Continue**.

A status screen displays the installation process for the update and then displays a message with the version installed when it completes.

If you currently have all updates installed, you receive a message indicating that you have the current version.

Related Topics

[Before installation](#)

[System requirements](#)

[Installing CaseMap](#)

Index

- C -

CaseMap

- installing 11
- system requirements 10
- updating 28

CaseMap Server

- registering in CaseMap 23

cases

- converting (local) CaseMap 26
- storing local cases, CaseMap 7

converting

- local cases CaseMap 26

- I -

installing

- before installing CaseMap 7
- CaseMap 11
- preliminary planning CaseMap 5
- system requirements CaseMap 10

- P -

preliminary planning

- CaseMap 5

- R -

registering

- CaseMap Server in CaseMap 23

- S -

system requirements

- CaseMap 10

- U -

updating

- CaseMap 28